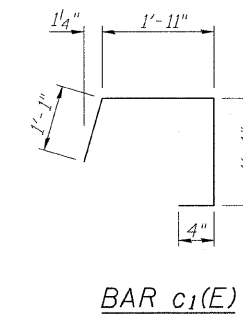
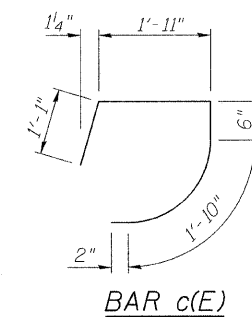
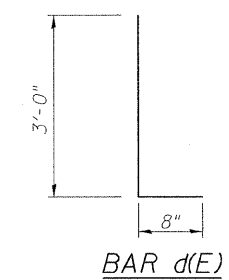
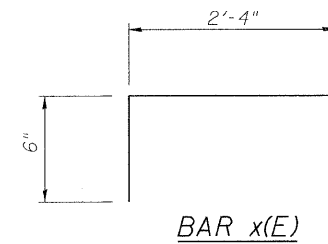
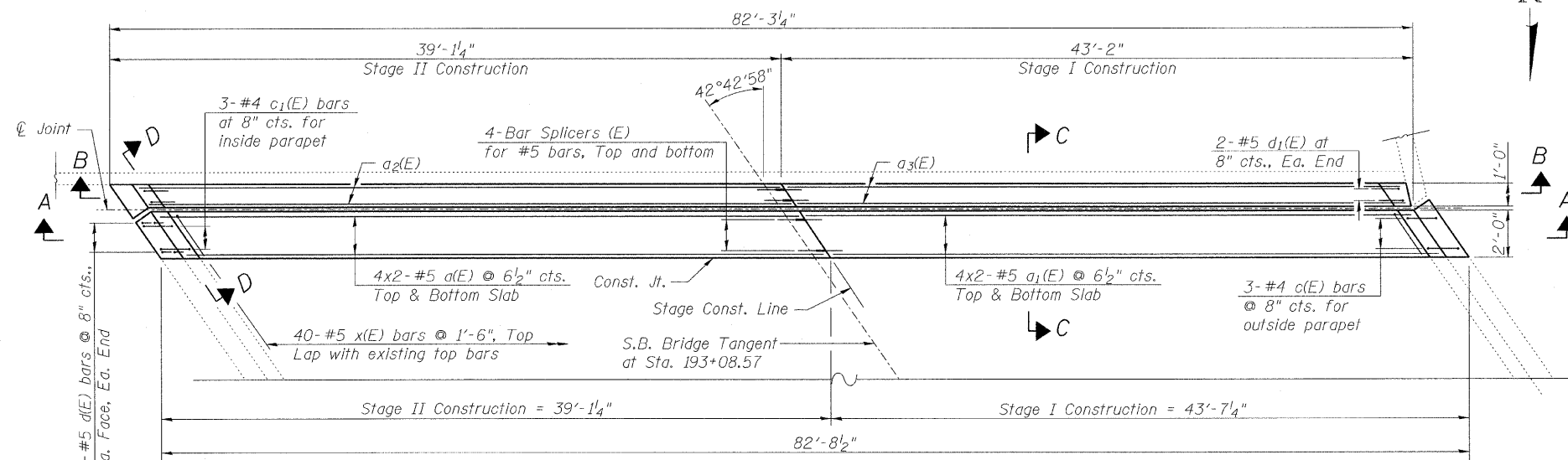
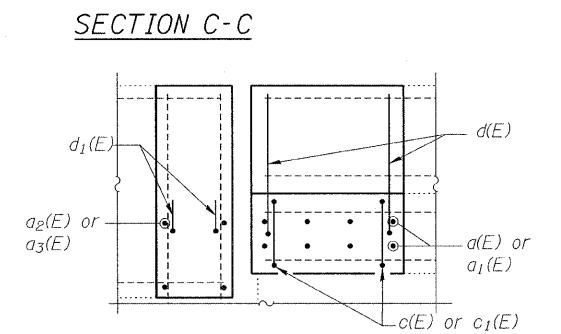
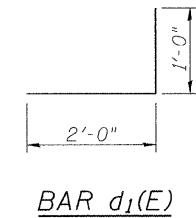
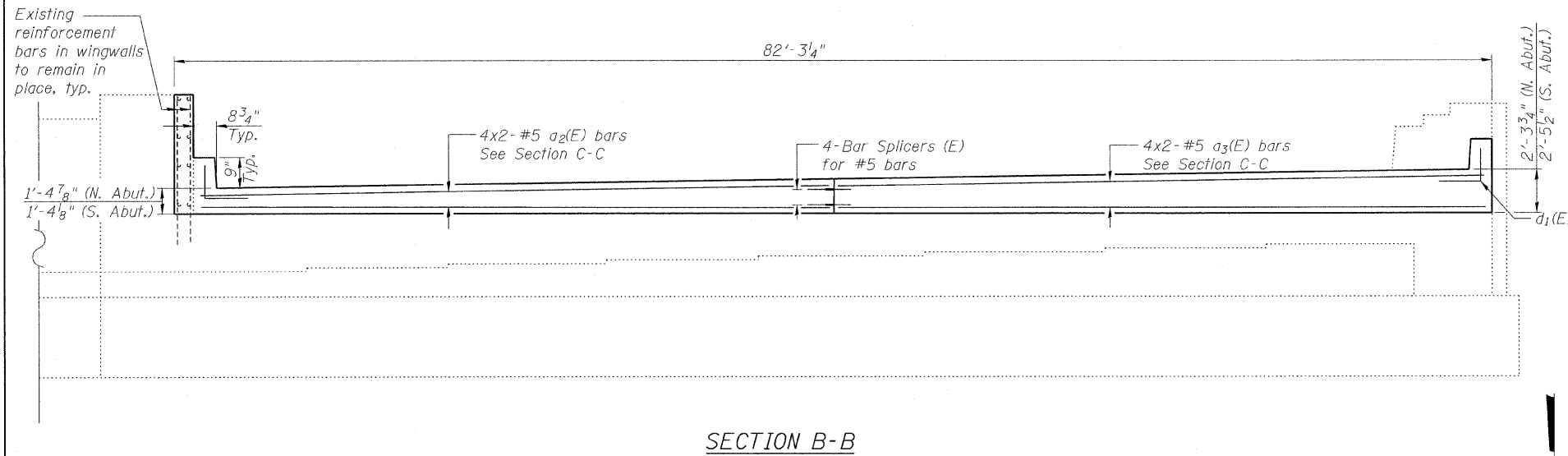
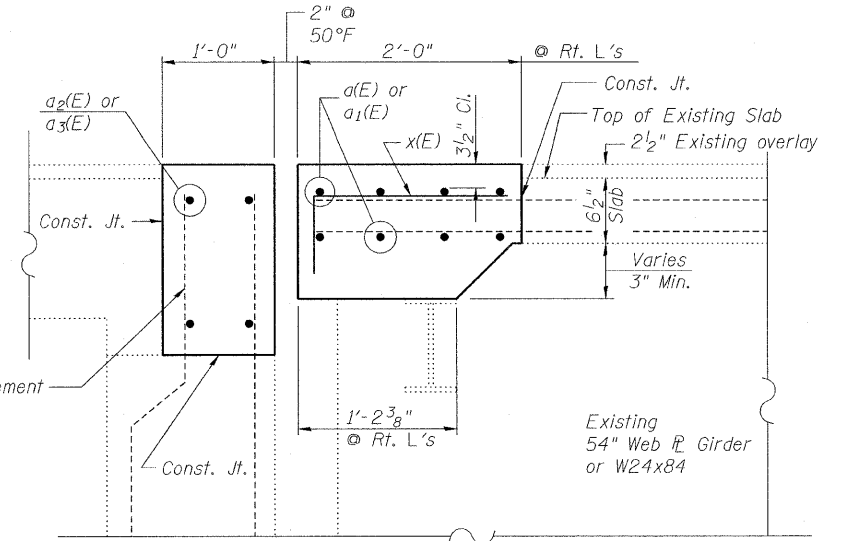
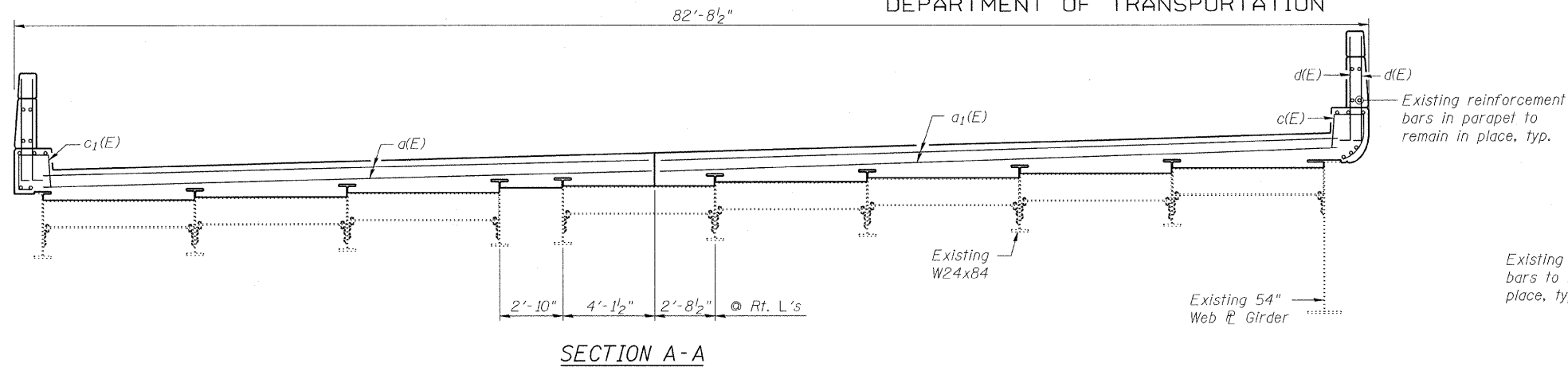


STATE OF ILLINOIS  
DEPARTMENT OF TRANSPORTATION



BILL OF MATERIAL

Bar	No.	Size	Length	Shape
a(E)	32	#5	20'-8"	—
a1(E)	32	#5	23'-0"	—
a2(E)	16	#5	20'-10"	—
a3(E)	16	#5	22'-6"	—
c(E)	6	#4	5'-6"	□
c1(E)	6	#4	4'-8"	□
d(E)	24	#5	3'-8"	L
d1(E)	8	#5	3'-0"	J
x(E)	80	#5	2'-10"	┌
Reinforcement Bars, Epoxy Coated			Pound	2580
Concrete Superstructure			Cu. Yd.	24.9

Bars indicated thus 4x2-#5 etc. indicates 4 lines of bars with 2 lengths per line.

PLAN  
(South abutment shown, north abutment mirrored about S.B. bridge tangent)

CONCRETE DETAILS  
STRUCTURE NO. 016-1121

MINIMUM BAR LAP

#5 bar = 2'-7"

<p>LIN ENGINEERING, LTD. Consulting Engineers Chatham, Illinois</p>	SHEET NO. 6	F.A.I. RTE. 290	SECTION (531-3.1,0305-302)RS-5	COUNTY COOK	TOTAL SHEETS 3/4	SHEET NO. 238
	9 SHEETS	CONTRACT NO. 60138		FED. ROAD DIST. NO. ILLINOIS FED. AID PROJECT		