

STATE OF ILLINOIS
DEPARTMENT OF TRANSPORTATION

Existing Structure: S.N. 016-0982 built in 1969 as F.A.I. Route 90, Section 0404-313-HB at Station 561+70.00. Structure consists of a three span steel plate girder bridge with 238'-4" back-to-back abutments, 74'-13/4" out-to-out deck width, multi-column piers and stub abutments. In 1989, expansion joints replaced, backwall repairs, and approaches rebuilt. In 1995, overlay replacement, expansion joints replaced, deck slab repairs, pin and connection replacement, and substructure repairs. In 2002, expansion joints replaced, pin and connection replacement, superstructure and substructure widening. In 2003, expansion joints replaced, superstructure replacement, substructure widening, slopewall replacement, and substructure repairs.

GENERAL NOTES

Plan dimensions and details relative to existing plans are subject to nominal construction variations. The Contractor shall field verify existing dimensions and details affecting new construction and make necessary approved adjustments prior to construction or ordering of materials. Such variations shall not be cause for additional compensation for a change in scope of the work, however, the Contractor will be paid for the quantity actually furnished at the unit price bid for the work.

See Roadway plans for maintenance of traffic.

INDEX OF SHEETS

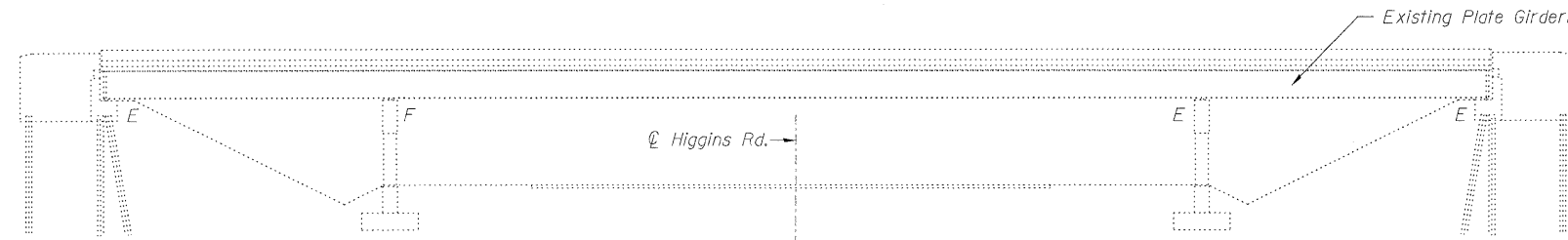
1. General Plan and Elevation
2. Repair Details

SCOPE OF WORK

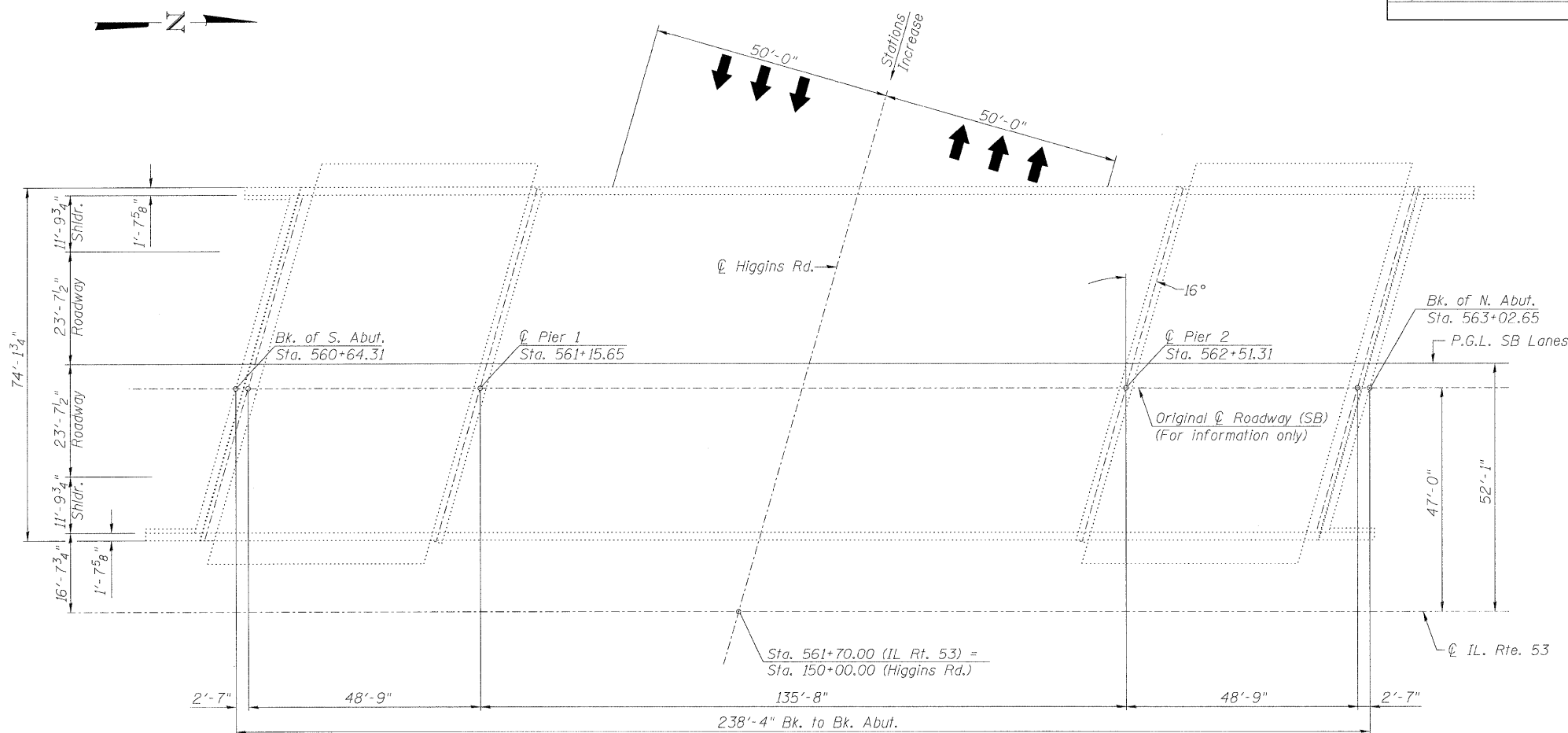
1. Replace portion of expansion joint seal at north abutment.
2. Apply Concrete Sealer to top of deck surface and top and inside vertical face of parapets.

TOTAL BILL OF MATERIAL

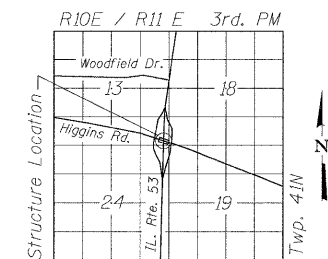
Item	Unit	Total
Concrete Sealer	Sq. Ft.	18364
Silicone Joint Sealer, 2 1/2"	Foot	40
Polymer Concrete	Cu. Ft.	2.2



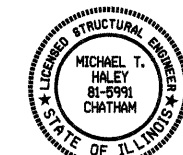
ELEVATION



PLAN



LOCATION SKETCH



Michael J. Haley 2/8/10
 Michael T. Haley Date
 Licensed Structural Engineer
 State of Illinois No. 81-5991
 Expires 11/30/2010

GENERAL PLAN AND ELEVATION
 SB IL ROUTE 53 OVER HIGGINS RD.
 F.A.I. 290 SEC (531-3.1,0305-302K)RS-5
 COOK COUNTY
 STATION 561+70.00
 STRUCTURE NO. 016-0982

LIN ENGINEERING, LTD. Consulting Engineers Chatham, Illinois	SHEET NO. 1	F.A.I. RTE.	SECTION	COUNTY	TOTAL SHEETS	SHEET NO.
	2 SHEETS	290	(531-3.1,0305-302K)RS-5	COOK	314	261
				CONTRACT NO. 60138		
Designed By: ADB Date: 12/2009		Checked By: MTH File: 016-0982.dgn		FED. ROAD DIST. NO. _ ILLINOIS FED. AID PROJECT		