

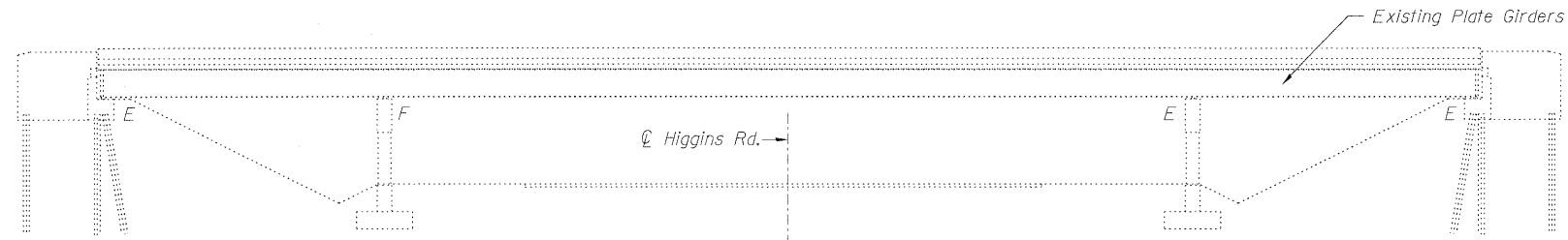
STATE OF ILLINOIS
DEPARTMENT OF TRANSPORTATION

Existing Structure: S.N. 016-0983 built in 1969 as F.A.I. Route 90, Section 0404-313-HB at Station 561+70.00. Structure consists of a three span steel plate girder bridge with 238'-4" back-to-back abutments, 74'-1 3/4" out-to-out deck width, multi-column piers and stub abutments. In 1989, expansion joints replaced, backwall repairs, and approaches rebuilt. In 1995, overlay replacement, expansion joints replaced, deck slab repairs, pin and connection replacement, and substructure repairs. In 2003, superstructure replacement, substructure widening, slopewall replacement, and substructure repairs.

GENERAL NOTES

Plan dimensions and details relative to existing plans are subject to nominal construction variations. The Contractor shall field verify existing dimensions and details affecting new construction and make necessary approved adjustments prior to construction or ordering of materials. Such variations shall not be cause for additional compensation for a change in scope of the work, however, the Contractor will be paid for the quantity actually furnished at the unit price bid for the work.

See Roadway plans for maintenance of traffic.



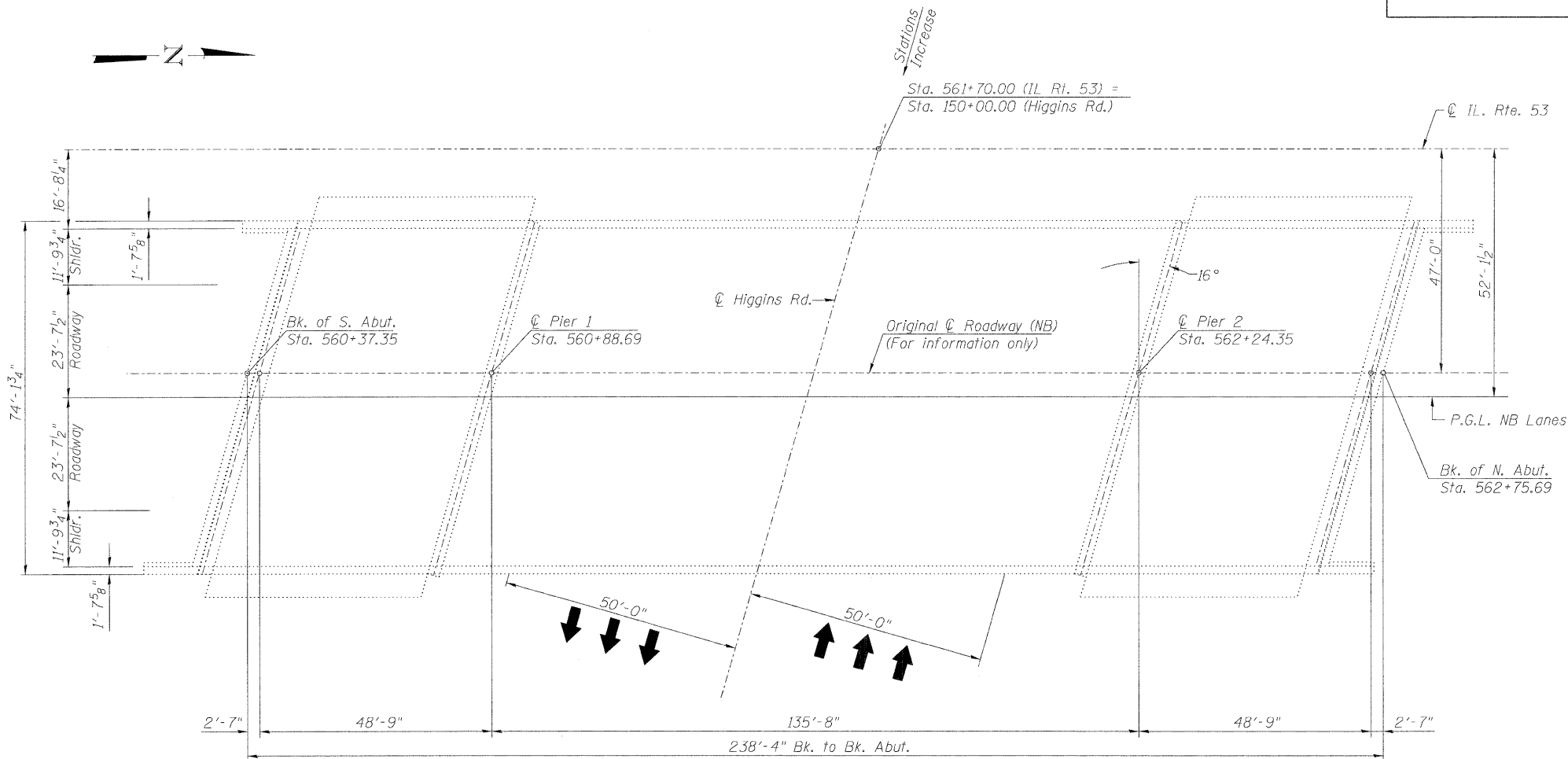
ELEVATION

SCOPE OF WORK

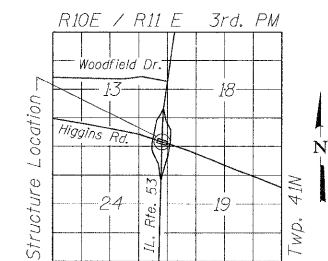
Apply Concrete Sealer to top of deck surface and top and inside vertical face of parapets.

TOTAL BILL OF MATERIAL

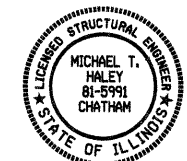
Item	Unit	Total
Concrete Sealer	Sq. Ft.	18364



PLAN



LOCATION SKETCH



Michael J. Haley 2/8/10
Date
Michael T. Haley
Licensed Structural Engineer
State of Illinois No. 81-5991
Expires 11/30/2010

GENERAL PLAN AND ELEVATION
NB IL ROUTE 53 OVER HIGGINS RD.
F.A.I. 290 SEC (531-3.1,0305-302K)RS-5
COOK COUNTY
STATION 561+70.00
STRUCTURE NO. 016-0983

 LIN ENGINEERING, LTD. Consulting Engineers Chatham, Illinois	SHEET NO. 1	F.A.I. RTE. 290	SECTION (531-3.1,0305-302K)RS-5	COUNTY COOK	TOTAL SHEETS 314	SHEET NO. 263
	1 SHEETS	CONTRACT NO. 60138		FED. ROAD DIST. NO. ILLINOIS FED. AID PROJECT		

Designed By: ADB
Date: 12/2009
Checked By: MTH
File: 016-0983.dgn
Drawn By: ADB