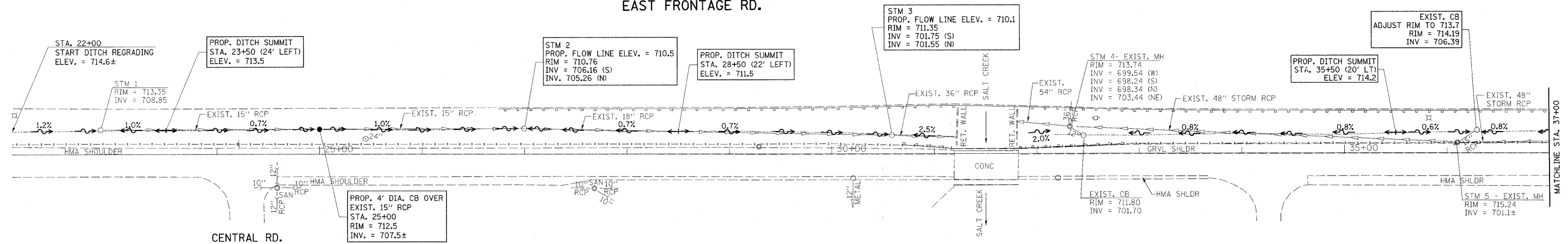


NOTE:  
 PROPOSED GRADING AND SHAPING DITCHES  
 BETWEEN STA. 52+00 TO STA. 62+00  
 TO BE PERFORMED BY OTHERS (ROLLING MEADOWS).



EAST FRONTAGE RD.

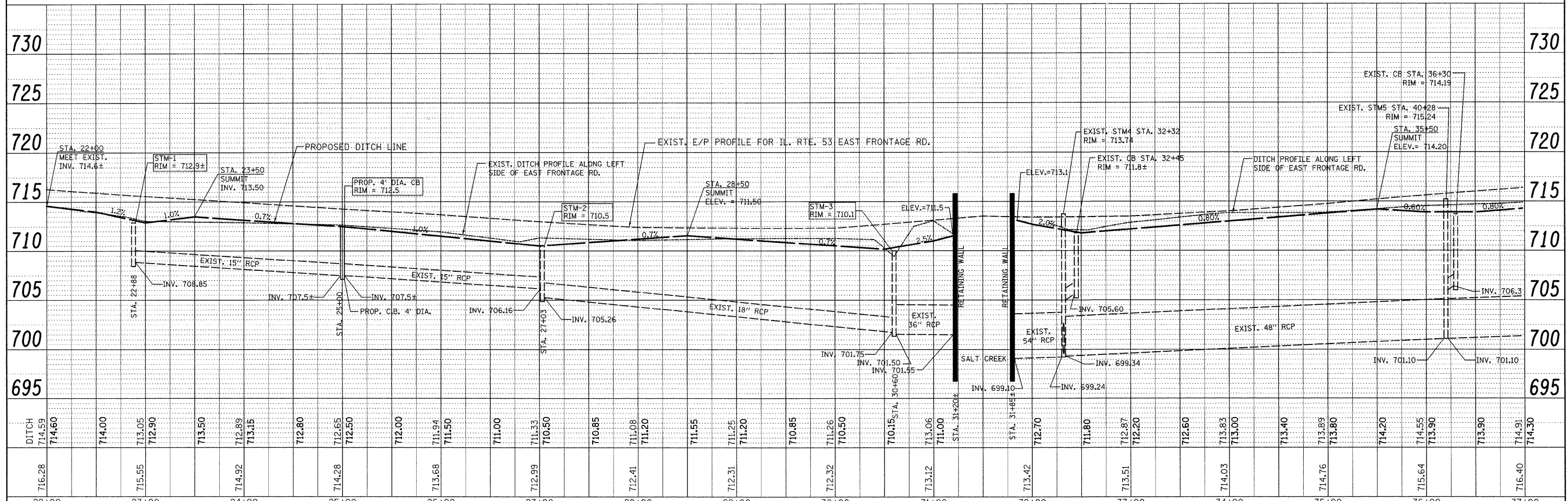
PLAN	SURVEYED	DATE
	PLANNED	
	CHECKED	
	BY	
	NO.	
	FILE NAME	



PROP. DITCH REGRADING  
 STA. 22+40 TO STA. 31+20  
 REMOVE & REPLACE C.L. FENCE

PROP. DITCH REGRADING  
 STA. 31+80 TO STA. 37+00  
 REMOVE & REPLACE C.L. FENCE

PROFILE	SURVEYED	DATE
	PLANNED	
	CHECKED	
	BY	
	NO.	
	NOTATIONS	



FILE NAME =	USER NAME = bauerd	DESIGNED -	REVISED -	<b>STATE OF ILLINOIS</b> <b>DEPARTMENT OF TRANSPORTATION</b>	<b>ROADWAY PLAN</b> <b>IL. RTE. 53 EAST FRONTAGE RD.</b>	F.A.I. RTE.	SECTION	COUNTY	TOTAL SHEETS	SHEET NO.	
ci:\pw_work\p\dots\baue\d\80144688\191910	IL53-hht-dra1.dgn	DRAWN -	REVISED -			290	(531-3.1, 0305-302K) RS-5	COOK	24	269	
PLOT SCALE = 50.0000' / IN.		CHECKED -	REVISED -			CONTRACT NO. 60138					
PLOT DATE = 2/9/2010		DATE -	REVISED -			ILLINOIS FED. AID PROJECT					