

STATE OF ILLINOIS
DEPARTMENT OF TRANSPORTATION
DIVISION OF HIGHWAYS

**PROPOSED
HIGHWAY PLANS**

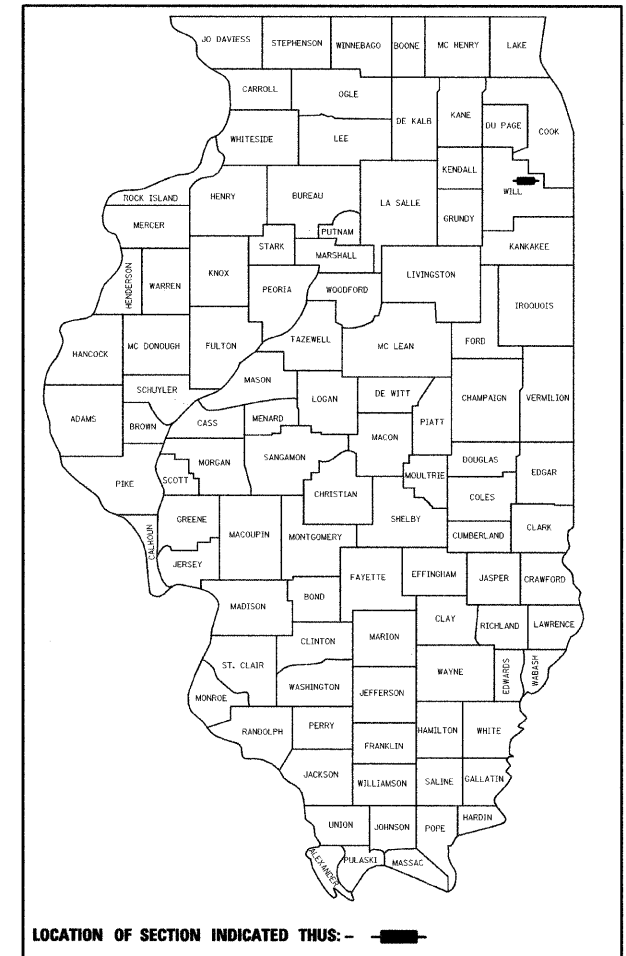
F.A.P. ROUTE 353 / U.S. ROUTE 30 (LINCOLN HWY)
SECTION 13-1 WILLIAM ST TO VANCINA LN
PROJECT -- (ADVANCED CONTRACT)
PAVEMENT WIDENING AND TRAFFIC SIGNAL INSTALLATION
WILL COUNTY

C-91-057-10

| | | | | |
|-----------------------------|-----------------|----------------|--------------------|----------------|
| F.A.P. RTE. 353 | SECTION 13-1 | COUNTY WILL | TOTAL SHEETS 67 | SHEET NO. 1 |
| ILLINOIS CONTRACT NO. 60152 | | | | |

*67-1=66

D-91-219-02



FOR INDEX OF SHEETS, SEE SHEET NO. 2

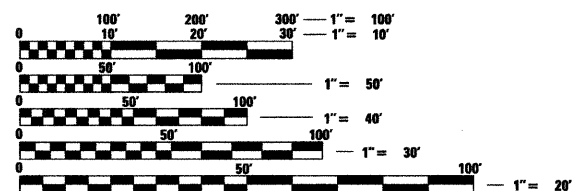
PROJECT IS LOCATED IN THE
VILLAGE OF NEW LENOX

DESIGN DESIGNATION

2,340 (20) OTHER PRINCIPAL ARTERIAL 4.27 (FD-20)

TRAFFIC DATA:

| | ADT (1998) | DESIGN SPEED | POSTED SPEED |
|--------------|------------|--------------|--------------|
| U. S. RTE 30 | 16,000 | 45 | 40 |
| MARLEY ROAD | 2,500 | 30 | 30 |

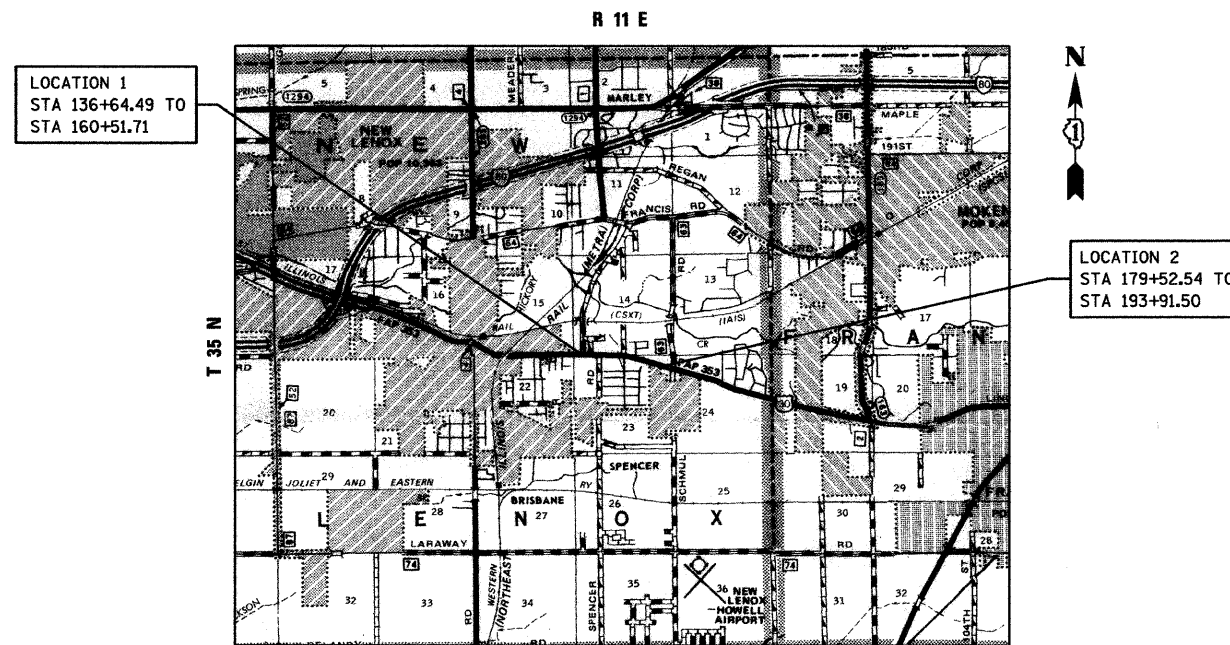


FULL SIZE PLANS HAVE BEEN PREPARED USING STANDARD ENGINEERING SCALES. REDUCED SIZED PLANS WILL NOT CONFORM TO STANDARD SCALES. IN MAKING MEASUREMENTS ON REDUCED PLANS, THE ABOVE SCALES MAY BE USED.

J.U.L.I.E.
JOINT UTILITY LOCATION INFORMATION FOR EXCAVATION
1-800-892-0123
OR 811

PROJECT ENGINEER - MICHELLE AQUINO - (847) 705-4606
PROJECT MANAGER - RAJENDRA SHAH - (847) 705-4555

CONTRACT NO. 60152



NEW LENOX TOWNSHIP (N.T.S.)
GROSS LENGTH = 3,826 FT. = 0.725 MILE
NET LENGTH = 3,826 FT. = 0.725 MILE

ROADWAY DESIGNED BY



STATE OF ILLINOIS
Professional Engineer Seal for Gregory R. Brumm, No. 049216.
SIGNATURE: Gregory R. Brumm
EXPIRES: 11/30/2011

STATE OF ILLINOIS
DEPARTMENT OF TRANSPORTATION
DIVISION OF HIGHWAYS

SUBMITTED: JANUARY 27, 2010

Diane M. O'Keefe, DEPUTY DIRECTOR OF HIGHWAYS, REGION ENGINEER
March 19, 2010

Scott E. Stett, P.E., Acting ENGINEER OF DESIGN AND ENVIRONMENT
March 19, 2010

Christine M. Reed, DIRECTOR OF HIGHWAYS, CHIEF ENGINEER

PRINTED BY THE AUTHORITY
OF THE STATE OF ILLINOIS