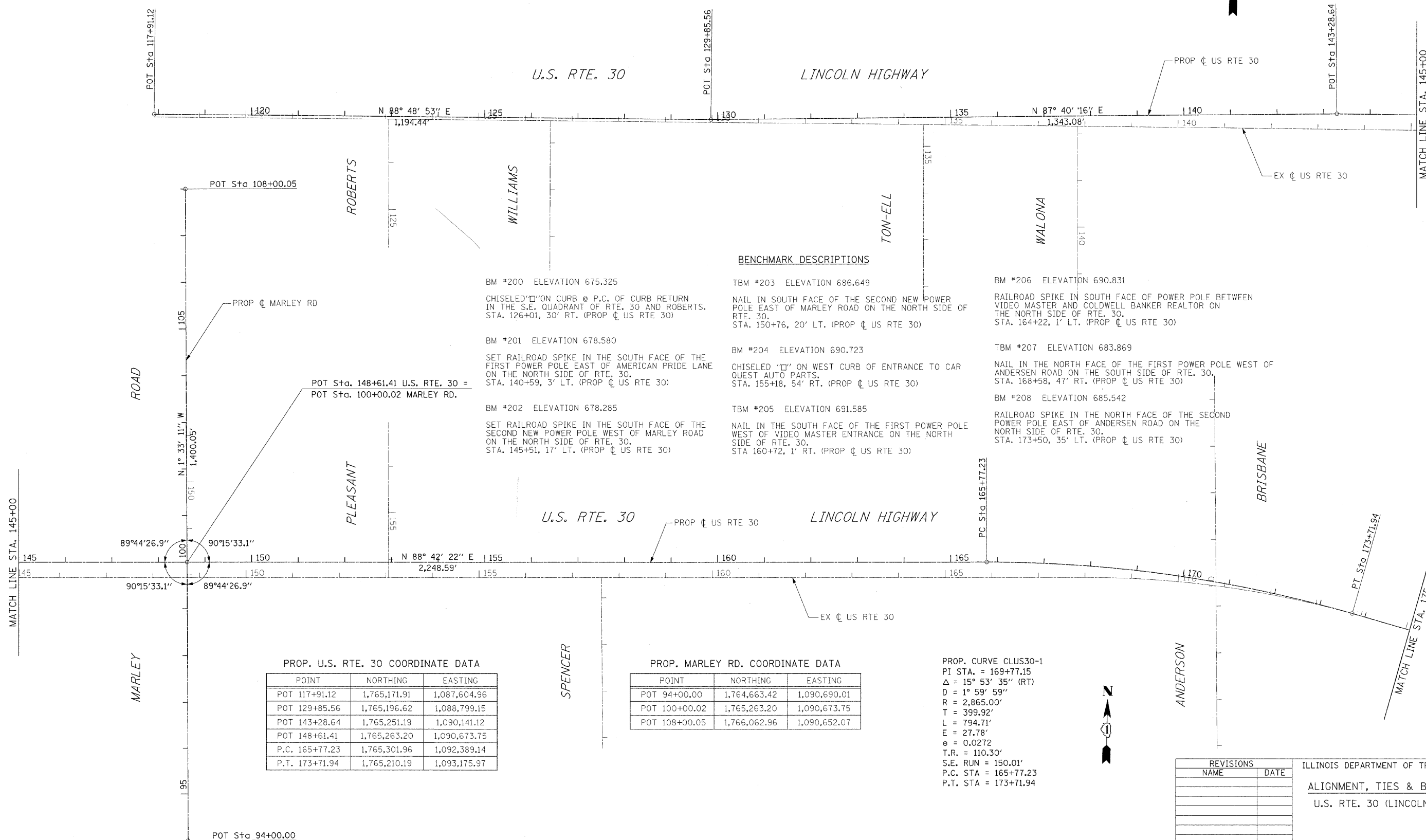


F.A.P. RTE.	SECTION	COUNTY	TOTAL SHEETS	SHEET NO.
353	13-1	WILL	67	11
STA.		TO STA.		
FED. ROAD DIST. NO.	ILLINOIS	FED. AID PROJECT		



BENCHMARK DESCRIPTIONS

- BM #200 ELEVATION 675.325
CHISELED "□" ON CURB @ P.C. OF CURB RETURN IN THE S.E. QUADRANT OF RTE. 30 AND ROBERTS. STA. 126+01, 30' RT. (PROP. CL US RTE 30)
- BM #201 ELEVATION 678.580
SET RAILROAD SPIKE IN THE SOUTH FACE OF THE FIRST POWER POLE EAST OF AMERICAN PRIDE LANE ON THE NORTH SIDE OF RTE. 30. STA. 140+59, 3' LT. (PROP. CL US RTE 30)
- BM #202 ELEVATION 678.285
SET RAILROAD SPIKE IN THE SOUTH FACE OF THE SECOND NEW POWER POLE WEST OF MARLEY ROAD ON THE NORTH SIDE OF RTE. 30. STA. 145+51, 17' LT. (PROP. CL US RTE 30)
- TBM #203 ELEVATION 686.649
NAIL IN SOUTH FACE OF THE SECOND NEW POWER POLE EAST OF MARLEY ROAD ON THE NORTH SIDE OF RTE. 30. STA. 150+76, 20' LT. (PROP. CL US RTE 30)
- BM #204 ELEVATION 690.723
CHISELED "□" ON WEST CURB OF ENTRANCE TO CAR QUEST AUTO PARTS. STA. 155+18, 54' RT. (PROP. CL US RTE 30)
- TBM #205 ELEVATION 691.585
NAIL IN THE SOUTH FACE OF THE FIRST POWER POLE WEST OF VIDEO MASTER ENTRANCE ON THE NORTH SIDE OF RTE. 30. STA. 160+72, 1' RT. (PROP. CL US RTE 30)
- BM #206 ELEVATION 690.831
RAILROAD SPIKE IN SOUTH FACE OF POWER POLE BETWEEN VIDEO MASTER AND COLDWELL BANKER REALTOR ON THE NORTH SIDE OF RTE. 30. STA. 164+22, 1' LT. (PROP. CL US RTE 30)
- TBM #207 ELEVATION 683.869
NAIL IN THE NORTH FACE OF THE FIRST POWER POLE WEST OF ANDERSEN ROAD ON THE SOUTH SIDE OF RTE. 30. STA. 168+58, 47' RT. (PROP. CL US RTE 30)
- BM #208 ELEVATION 685.542
RAILROAD SPIKE IN THE NORTH FACE OF THE SECOND POWER POLE EAST OF ANDERSEN ROAD ON THE NORTH SIDE OF RTE. 30. STA. 173+50, 35' LT. (PROP. CL US RTE 30)

PROP. U.S. RTE. 30 COORDINATE DATA

POINT	NORTHING	EASTING
POT 117+91.12	1,765,171.91	1,087,604.96
POT 129+85.56	1,765,196.62	1,088,799.15
POT 143+28.64	1,765,251.19	1,090,141.12
POT 148+61.41	1,765,263.20	1,090,673.75
P.C. 165+77.23	1,765,301.96	1,092,389.14
P.T. 173+71.94	1,765,210.19	1,093,175.97

PROP. MARLEY RD. COORDINATE DATA

POINT	NORTHING	EASTING
POT 94+00.00	1,764,663.42	1,090,690.01
POT 100+00.02	1,765,263.20	1,090,673.75
POT 108+00.05	1,766,062.96	1,090,652.07

PROP. CURVE CLUS30-1
 PI STA. = 169+77.15
 $\Delta = 15^\circ 53' 35''$ (RT)
 $D = 1^\circ 59' 59''$
 $R = 2,865.00'$
 $T = 399.92'$
 $L = 794.71'$
 $E = 27.78'$
 $e = 0.0272$
 $T.R. = 110.30'$
 $S.E. RUN = 150.01'$
 P.C. STA = 165+77.23
 P.T. STA = 173+71.94

REVISIONS	
NAME	DATE

ILLINOIS DEPARTMENT OF TRANSPORTATION
ALIGNMENT, TIES & BENCHMARKS
 U.S. RTE. 30 (LINCOLN HIGHWAY)

SCALE : 1" = 100'
 DATE : / /
 DRAWN BY : BAE
 CHECKED BY : GB