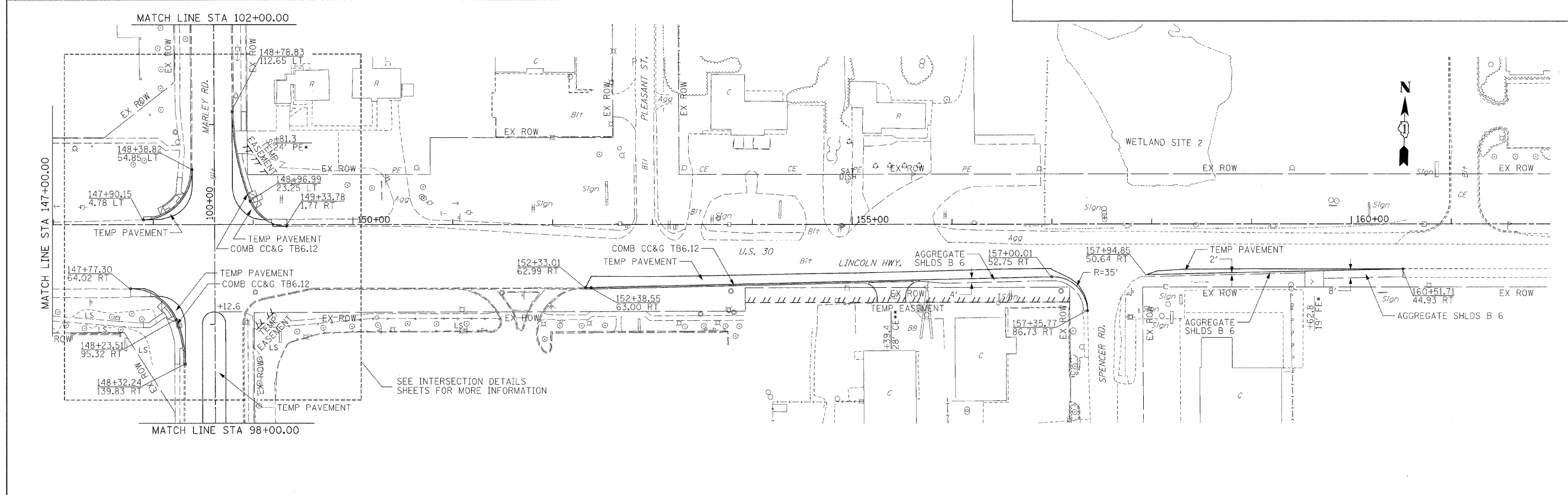


•DRIVEWAY TO BE CONSTRUCTED IN ACCORDANCE WITH SPECIAL PROVISION AGGREGATE SURFACE COURSE FOR TEMPORARY ACCESS.

••DRIVEWAY TO BE CONSTRUCTED IN ACCORDANCE WITH DISTRICT DETAIL "DRIVEWAY DETAILS - DISTANCE BETWEEN ROW AND FACE OF CURB & EDGE OF SHOULDER >= 15' (4.5 m)" (BD-01)



SEE INTERSECTION DETAILS SHEETS FOR MORE INFORMATION

FILE NAME =	USER NAME =	DESIGNED -	REVISED -	STATE OF ILLINOIS DEPARTMENT OF TRANSPORTATION	PLAN US ROUTE 30 (LINCOLN HIGHWAY)			F.A.P. RTE.	SECTION	COUNTY	TOTAL SHEETS	SHEET NO.
		DRAWN -	REVISED -		353	13-1	WILL	67	16			
		CHECKED -	REVISED -		SCALE: 1:50			SHEET NO. 1 OF 2 SHEETS		STA. 132+00 TO STA. 162+00		
		DATE -	REVISED -		CONTRACT NO. 60152			ILLINOIS FED. AID PROJECT				