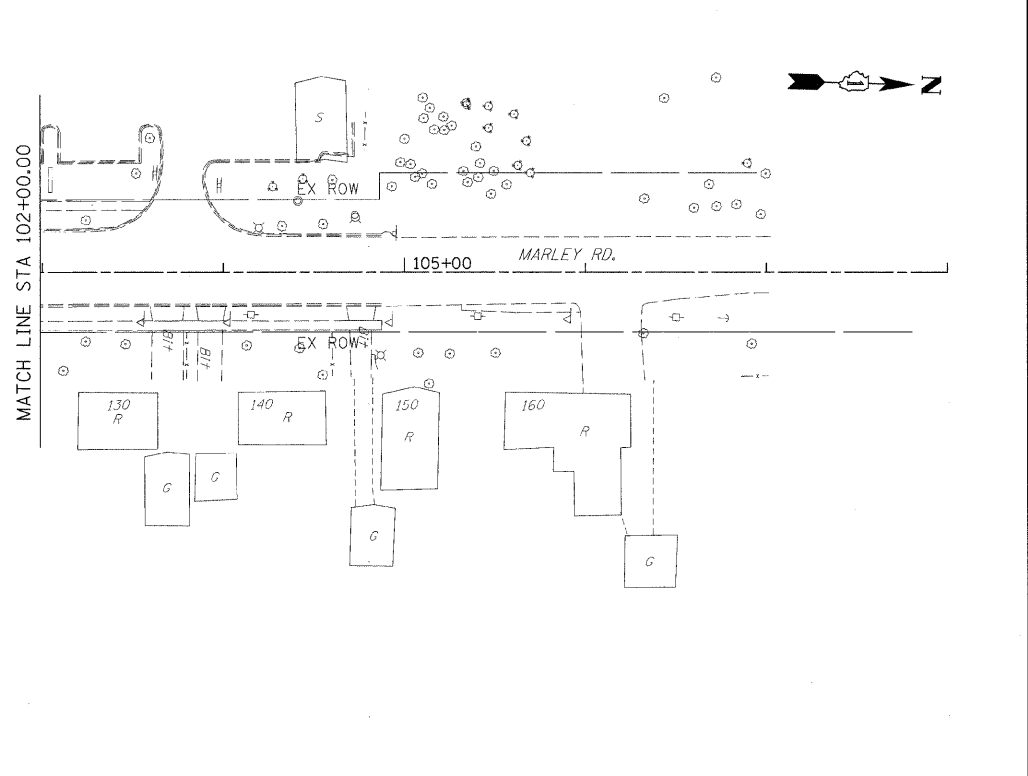
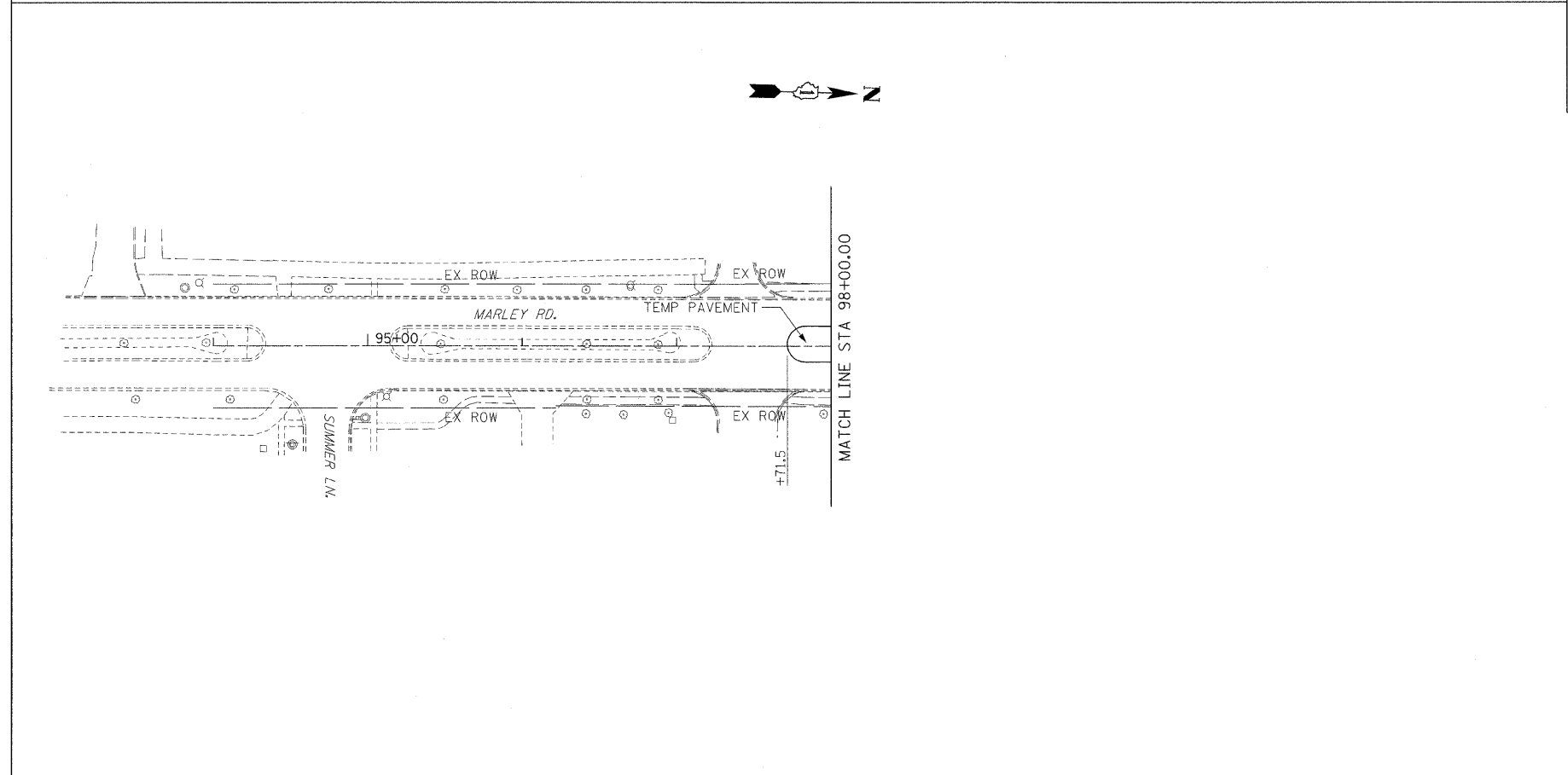


•DRIVEWAY TO BE CONSTRUCTED IN ACCORDANCE WITH SPECIAL PROVISION AGGREGATE SURFACE COURSE FOR TEMPORARY ACCESS.

••DRIVEWAY TO BE CONSTRUCTED IN ACCORDANCE WITH DISTRICT DETAIL "DRIVEWAY DETAILS - DISTANCE BETWEEN ROW AND FACE OF CURB & EDGE OF SHOULDER $\geq 15'$ (4.5 m)" (BD-01)



FILE NAME =	USER NAME =	DESIGNED -	REVISED -	STATE OF ILLINOIS DEPARTMENT OF TRANSPORTATION	PLAN US ROUTE 30 (LINCOLN HIGHWAY)			F.A.P. RTE. 353	SECTION 13-I	COUNTY WILL	TOTAL SHEETS 67	SHEET NO. 17
	PLOT SCALE =	DRAWN -	REVISED -		SCALE: 1:50	SHEET NO. 2 OF 2 SHEETS	STA. 179+50.00 TO STA. 194+50.00	CONTRACT NO. 60152				
	PLOT DATE =	CHECKED -	REVISED -		ILLINOIS FED. AID PROJECT							
		DATE -	REVISED -									