

F.A.U. RTE.	SECTION	COUNTY	TOTAL SHEETS	SHEET NO.
3902	AR-1 EXT-RS-3	KANE	29	1
		ILLINOIS	CONTRACT NO. 60158	

STATE OF ILLINOIS
DEPARTMENT OF TRANSPORTATION
DIVISION OF HIGHWAYS

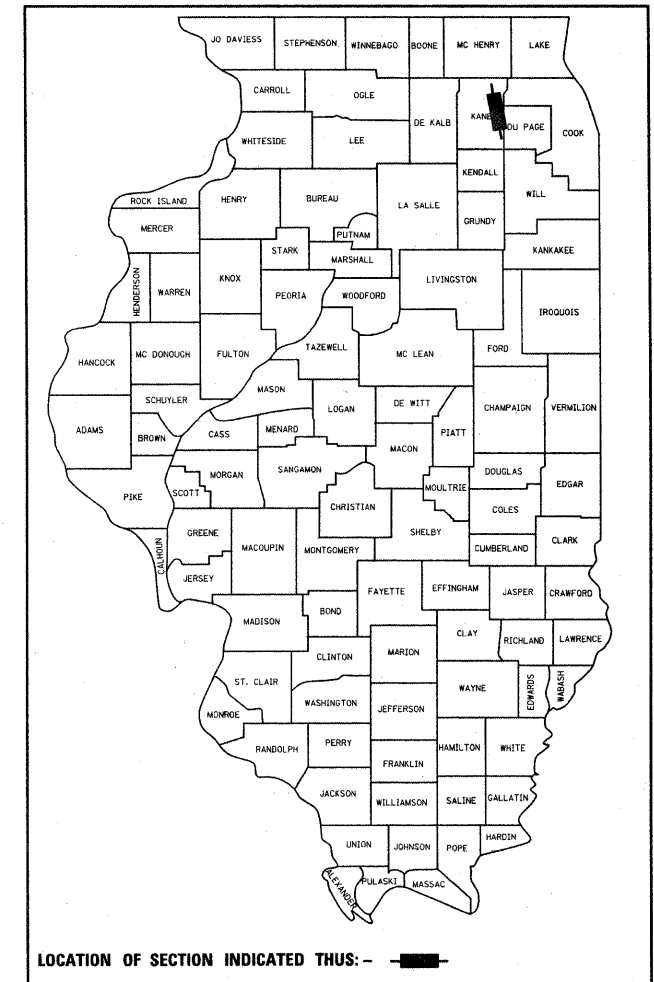
**PROPOSED
HIGHWAY PLANS**
FAU ROUTE 3902: ILL 31 /56
SOUTH OF I-88 TO NEW YORK STREET

SECTION: AR-1EXT-RS-3
RESURFACING

KANE COUNTY
C-91-082-10

FOR INDEX OF SHEETS, SEE SHEET NO. 2

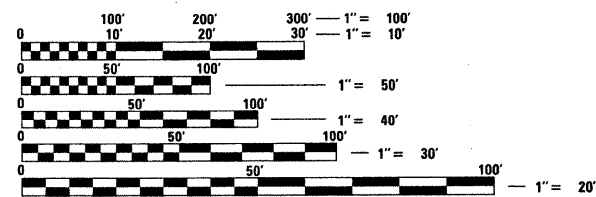
D-91-082-10



THIS PROJECT IS LOCATED IN THE VILLAGE OF NORTH AURORA AND CITY OF AURORA

TRAFFIC DATA

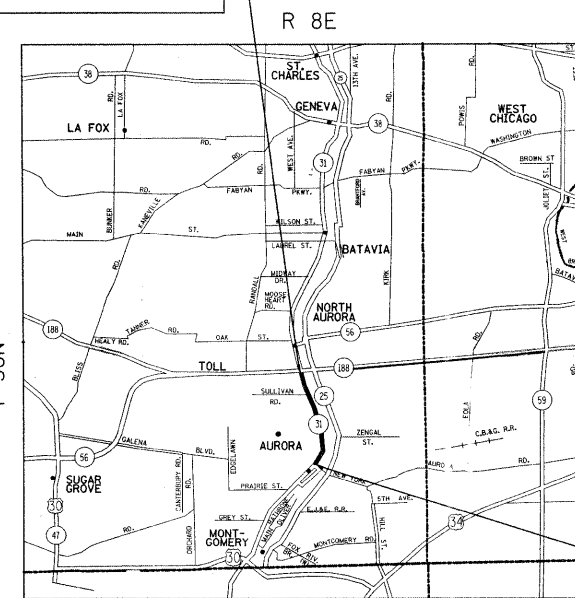
ADT (2007) = 24,200
SPEED LIMIT = 35 MPH



FULL SIZE PLANS HAVE BEEN PREPARED USING STANDARD ENGINEERING SCALES. REDUCED SIZED PLANS WILL NOT CONFORM TO STANDARD SCALES. IN MAKING MEASUREMENTS ON REDUCED PLANS, THE ABOVE SCALES MAY BE USED.

J.U.L.I.E
JOINT UTILITY LOCATION INFORMATION FOR EXCAVATION
1-800-892-0123 OR 811

PROJECT ENDS STATION 128+09



PROJECT BEGINS STATION 06+69



PROJECT ENGINEER: DAN WILGREEN / (847) 705-4240
PROJECT MANAGER KEN ENG / (847)-705-4247

GROSS AND NET LENGTH OF PROJECT = 12,140 FT. = 2.3 MILE

CONTRACT NO. 60158

STATE OF ILLINOIS
DEPARTMENT OF TRANSPORTATION
DIVISION OF HIGHWAYS

SUBMITTED JANUARY 26, 2010

Diana M. O'Keefe
DEPUTY DIRECTOR OF HIGHWAYS, REGION ENGINEER

March 19, 2010

Scott E. Stiel
ENGINEER OF DESIGN AND ENVIRONMENT

March 19, 2010

Christine M. Reed
DIRECTOR OF HIGHWAYS, CHIEF ENGINEER

PRINTED BY THE AUTHORITY
OF THE STATE OF ILLINOIS