

F.A.P. RTE.	SECTION	COUNTY	TOTAL SHEETS	SHEET NO.
330	(464Y & 465Y) RS-3	COOK	44	1
FED. ROAD DIST. NO. 1		ILLINOIS	CONTRACT NO. 60166	
D-91-116-10 * 44 + 1 = 45				

STATE OF ILLINOIS
DEPARTMENT OF TRANSPORTATION
DIVISION OF HIGHWAYS
PROPOSED
HIGHWAY PLANS
F.A.P. 330: US ROUTE 12/45 (MANNHEIM RD.)
SECTION: (464Y & 465Y) RS-3
BERTEAU AVENUE TO US ROUTE 20 (LAKE ST.)
RESURFACING (3P)

FOR INDEX OF SHEETS, SEE SHEET NO. 2

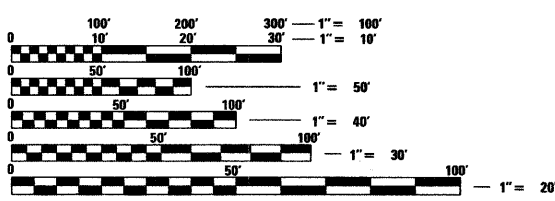
IMPROVEMENT LOCATED WITHIN THE VILLAGES OF SCHILLER PARK, NORTHLAKE, FRANKLIN PARK, MELROSE PARK, AND STONE PARK

COOK COUNTY
C-91-116-10



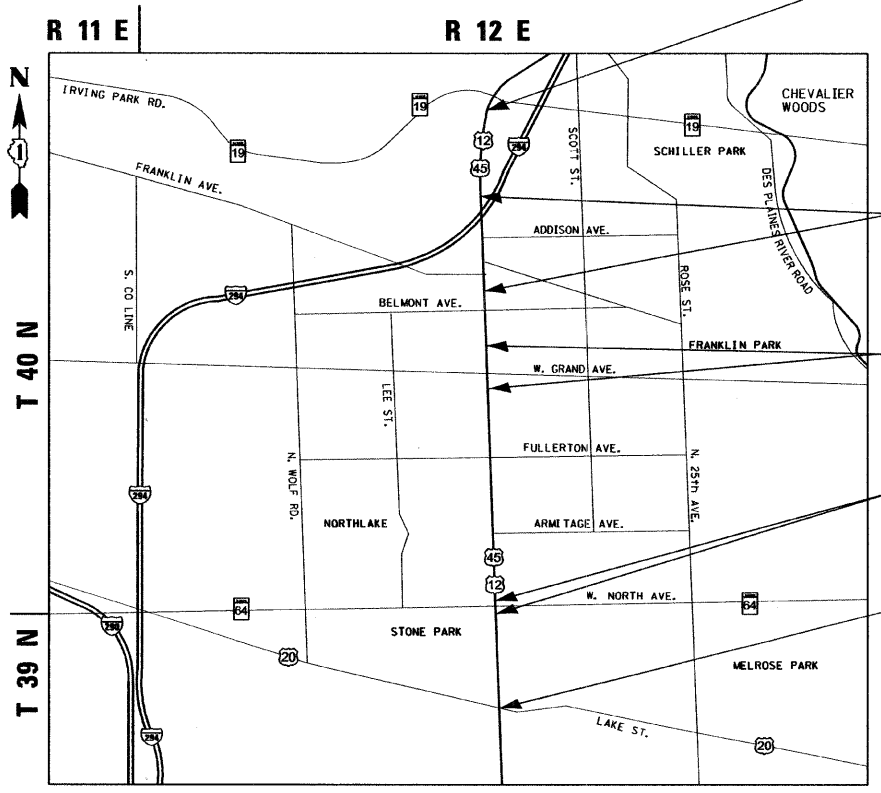
LOCATION OF SECTION INDICATED THIS: - [Symbol] -

TRAFFIC DATA
US ROUTE 12/45
2007 ADT=47,700
SPEED LIMIT=30 MPH TO 40 MPH



FULL SIZE PLANS HAVE BEEN PREPARED USING STANDARD ENGINEERING SCALES. REDUCED SIZED PLANS WILL NOT CONFORM TO STANDARD SCALES. IN MAKING MEASUREMENTS ON REDUCED PLANS, THE ABOVE SCALES MAY BE USED.

J.U.L.I.E.
JOINT UTILITY LOCATION INFORMATION FOR EXCAVATION
1-800-892-0123
OR 811



SCALE: NTS
LEYDEN AND PROVISO TOWNSHIPS

GROSS LENGTH OF PROJECT = 20,142 FT = 3.81 MILES
NET LENGTH OF PROJECT = 15,575 FT = 2.95 MILES

IMPROVEMENT ENDS
STA. 228 + 60

BRIDGE OMISSION
STA. 164 + 57 TO 200 + 19

OMISSION
STA. 136 + 91.22 TO 145 + 50.20

BRIDGE OMISSION
STA. 56 + 85.83 TO 58 + 31.55

IMPROVEMENT BEGINS
STA. 27 + 18

DISTRICT ONE - PLAN PREP ENGINEER: KEN ENG (847) 705-4247

STATE OF ILLINOIS
DEPARTMENT OF TRANSPORTATION
DIVISION OF HIGHWAYS

SUBMITTED February 5, 2010

Diane M. O'Keefe
DEPUTY DIRECTOR OF HIGHWAYS, REGION ENGINEER

March 19, 2010
Scott E. Stitt, P.E.
Acting ENGINEER OF DESIGN AND ENVIRONMENT

March 19, 2010
Christie M. Reed
DIRECTOR OF HIGHWAYS, CHIEF ENGINEER

200 22ND Street, Suite 216, Lombard, IL 60148
630.705.0110 voice, 630.839.2566 fax
www.mps-il.com

MILLENNIA PROFESSIONAL SERVICES

MILLENNIA PROFESSIONAL SERVICES
THOMAS V. NGO, P.E.
* 062-058379

Thomas V. Ngo
DATE: 02/05/10
SIGNATURE AND SEAL APPLIES TO DRWG.

PRINTED BY THE AUTHORITY
OF THE STATE OF ILLINOIS

CONTRACT NO. 60166