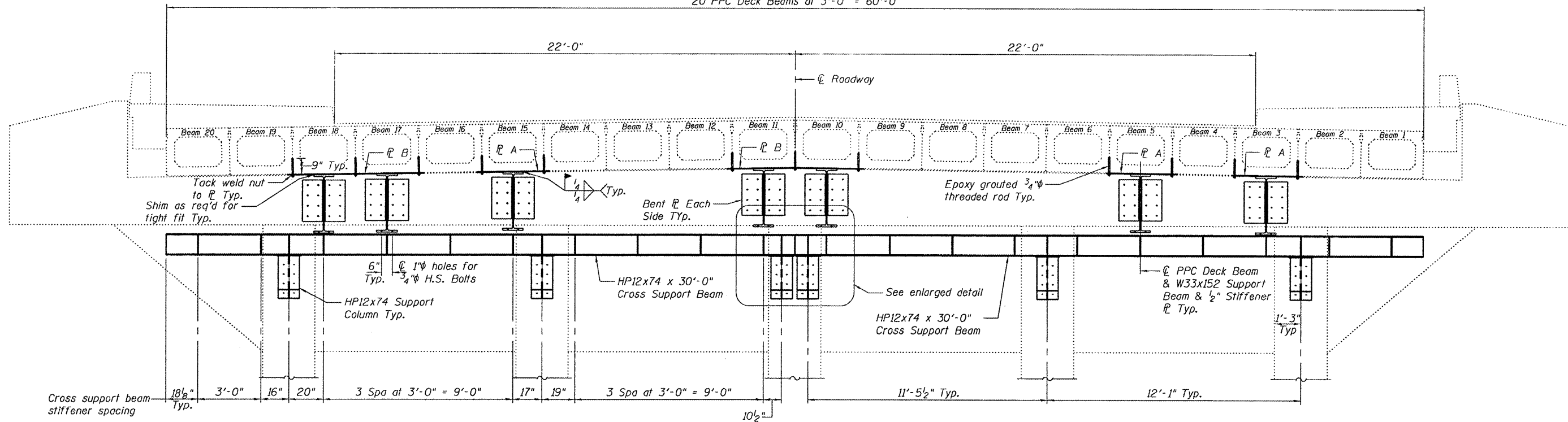
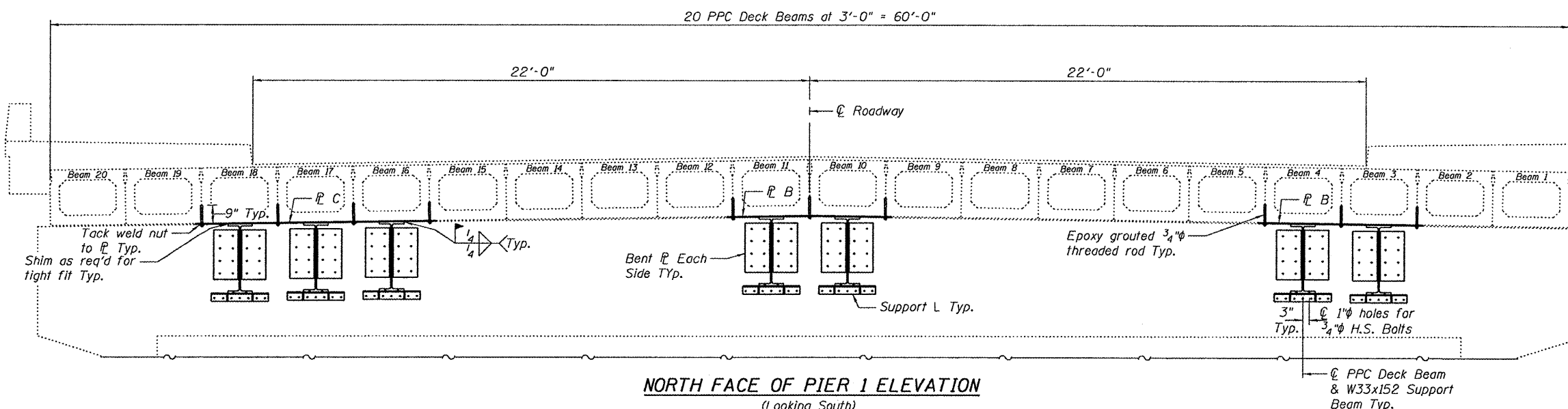


STATE OF ILLINOIS
DEPARTMENT OF TRANSPORTATION

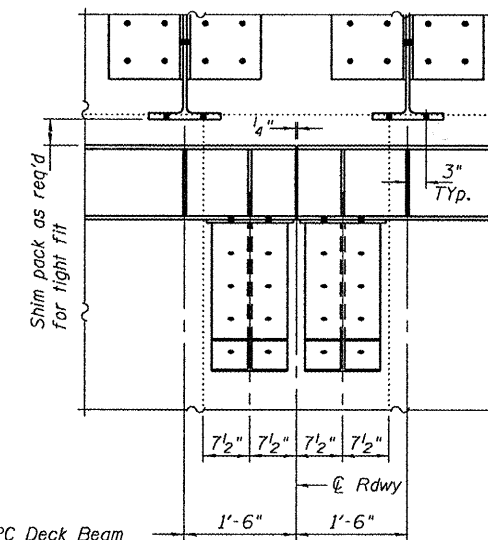
20 PPC Deck Beams at 3'-0" = 60'-0"



SOUTH ABUTMENT ELEVATION
(Looking South)



NORTH FACE OF PIER 1 ELEVATION
(Looking South)
(South face of Pier 2 similar by mirroring)



ENLARGED ABUTMENT DETAIL

DESIGNED	V.H.V.
CHECKED	A.T.H.
DRAWN	Drew Christopher
CHECKED	V.H.V. A.T.H.

March 3, 2010

EXAMINED	<i>Carl Proyer</i> ENGINEER OF STRUCTURAL SERVICES
PASSED	<i>Ralph E. Anderson</i> ENGINEER OF BRIDGES AND STRUCTURES

DETAILS
SN 016-0934

SHEET NO. 3	F.A.U. RTE.	SECTION	COUNTY	TOTAL SHEETS	SHEET NO.
	2937	1112.1 BR-2	Cook	8	6
4 SHEETS	FED. ROAD DIST. NO. ILLINOIS		FED. AID PROJECT		
			CONTRACT NO. 60J18		