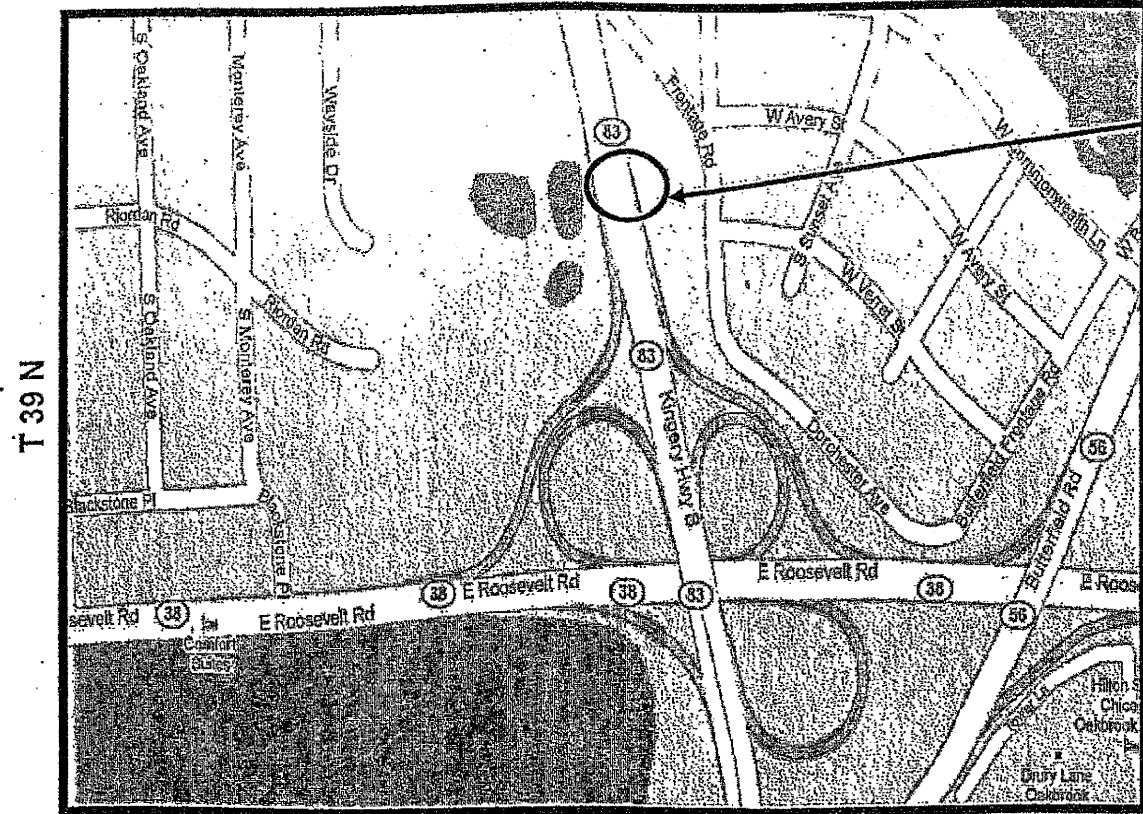


|       |            |        |              |              |
|-------|------------|--------|--------------|--------------|
| ROUTE | SECTION    | COUNTY | TOTAL SHEETS | SHEET NUMBER |
| 344   | 5A3 R-1-R5 | DUPAGE | 27           | 27A          |

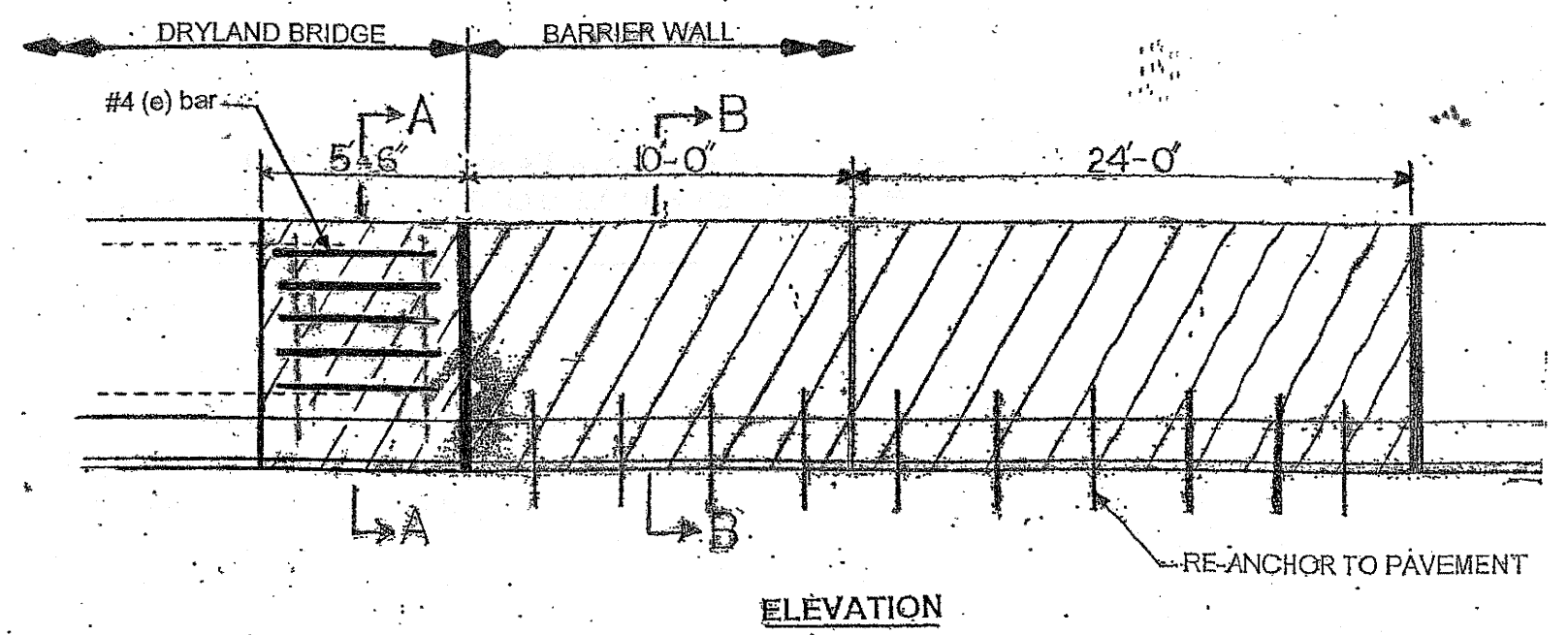
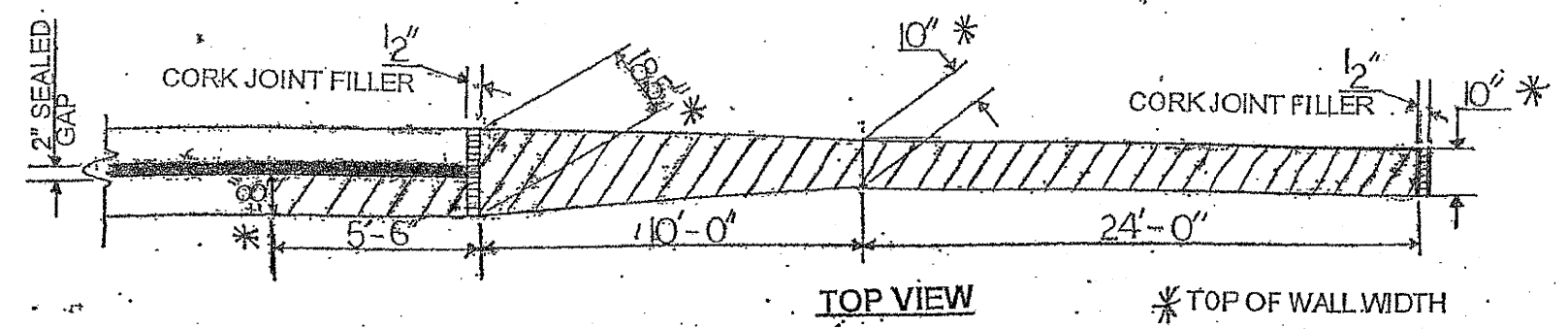
Contract 60J21

R 11 E

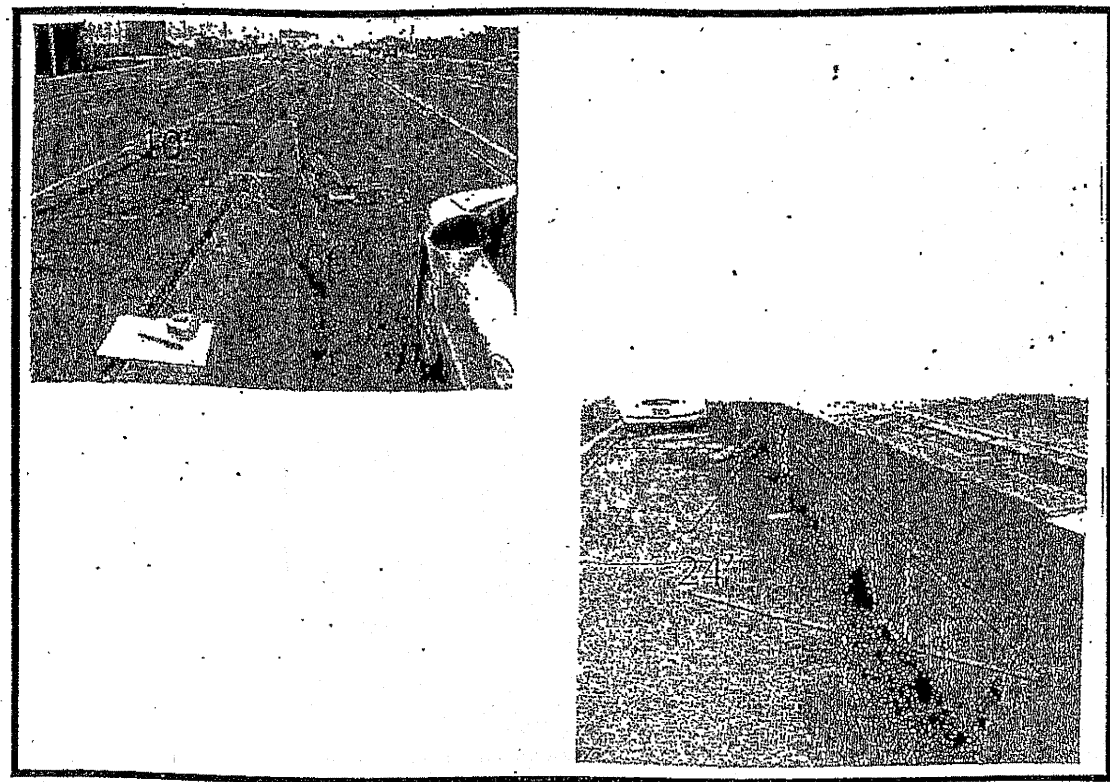


VILLAGE OF OAKBROOK  
YORK TOWNSHIP  
DuPAGE COUNTY

LOCATION 19: SB AT ROUTE 83 AT EXIT RAMP TO WB ROOSEVELT ROAD, LEFT SIDE MEDIAN WALL.



HATCHED AREA INDICATES CONCRETE REMOVAL  
□ INDICATES LIMITS OF CONCRETE STRUCTURES



TRAFFIC DATA:  
ROUT 83: SPEED LIMIT = 50 MPH  
2009 ADT = 68,000

SHEET 1 OF 2

ILLINOIS DEPARTMENT OF TRANSPORTATION  
LOCATION: 1  
ROUTE 83 (SB)  
Added Sheet 4-7-10