

F.A.P. RTE.	SECTION	COUNTY	TOTAL SHEETS	SHEET NO.
344	543 R-1-RS	DUPAGE	* 27	1
FED. ROAD DIST. NO. 1	ILLINOIS	CONTRACT NO. 60J21		

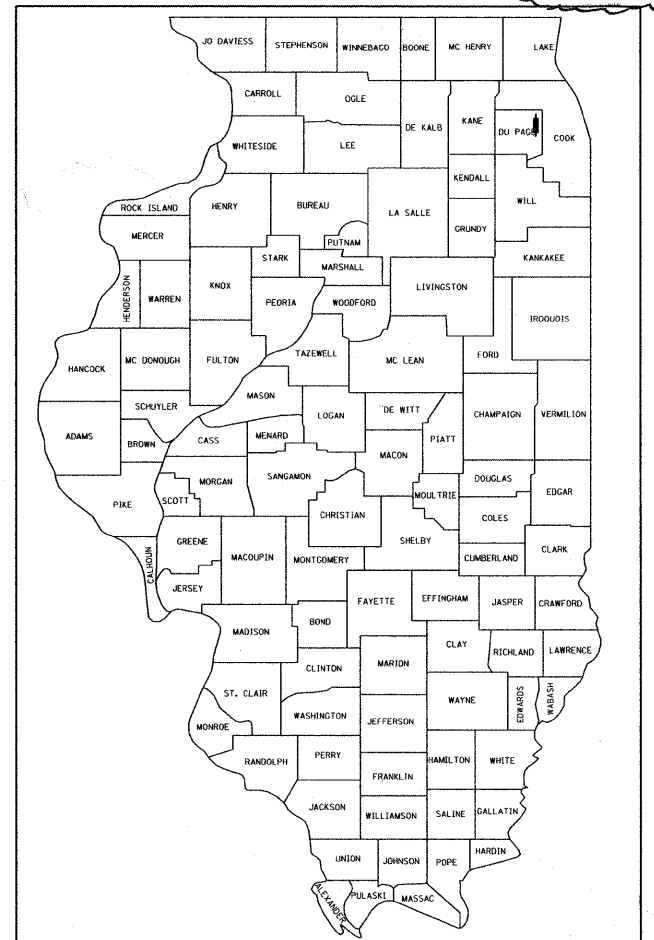
D-91-208-10 **+4=31 Total*

STATE OF ILLINOIS
DEPARTMENT OF TRANSPORTATION
DIVISION OF HIGHWAYS
PROPOSED
HIGHWAY PLANS

F.A.P. 344: ILLINOIS ROUTE 83
WASHINGTON STREET TO ILLINOIS ROUTE 56
SECTION: 543 R-1-RS
RESURFACING (3P)
PROJECT: --
DUPAGE COUNTY
C-91-208-10

FOR INDEX OF SHEETS, SEE SHEET NO. 2

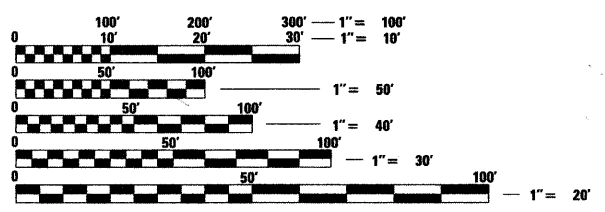
IMPROVEMENT LOCATED WITHIN THE CITY OF ELMHURST, THE VILLAGE OF VILLA PARK, AND THE CITY OF OAKBROOK TERRACE



LOCATION OF SECTION INDICATED THUS:

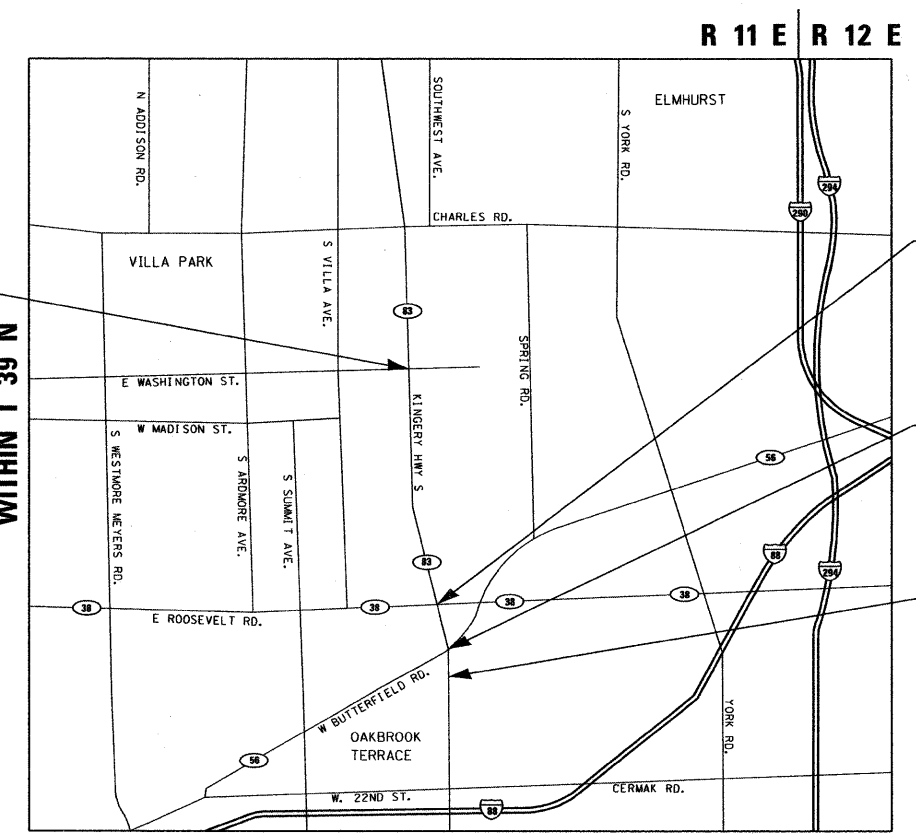
TRAFFIC DATA
ILLINOIS ROUTE 83
2007 ADT = 76,500
SPEED LIMIT = 45-50 MPH

IMPROVEMENT ENDS
STA. 650 + 57



FULL SIZE PLANS HAVE BEEN PREPARED USING STANDARD ENGINEERING SCALES. REDUCED SIZED PLANS WILL NOT CONFORM TO STANDARD SCALES. IN MAKING MEASUREMENTS ON REDUCED PLANS, THE ABOVE SCALES MAY BE USED.

J.U.L.I.E.
JOINT UTILITY LOCATION INFORMATION FOR EXCAVATION
1-800-892-0123
OR 811



BRIDGE OMISSION
STA. 585 + 02 TO STA. 587 + 13

BRIDGE OMISSION
STA. 571 + 30 TO STA. 573 + 38

IMPROVEMENT BEGINS
STA. 566 + 74

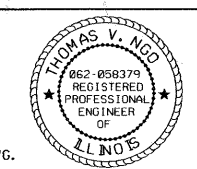
SCALE: NTS

YORK TOWNSHIP

GROSS LENGTH OF PROJECT = 8,383 FT = 1.59 MILES
NET LENGTH OF PROJECT = 7,964 FT = 1.51 MILES

MILLENNIA PROFESSIONAL SERVICES
 THOMAS V. NGO, P.E.
 * 062-058379

Thomas V. Ngo
 DATE: 2/16/2010
 SIGNATURE AND SEAL APPLIES TO DRWG.



STATE OF ILLINOIS
DEPARTMENT OF TRANSPORTATION
DIVISION OF HIGHWAYS

SUBMITTED FEBRUARY 16, 2010

Diana M. O'Keefe
 DEPUTY DIRECTOR OF HIGHWAYS, REGION ENGINEER

March 19, 2010
Scott E. Stitt, P.E.
 ENGINEER OF DESIGN AND ENVIRONMENT

March 19, 2010
Christine M. Reed
 DIRECTOR OF HIGHWAYS, CHIEF ENGINEER

MILLENNIA PROFESSIONAL SERVICES

200 22ND Street, Suite 216, Lombard, IL 60148
 630.705.0110 voice, 630.839.2566 fax
 www.mps-il.com

PRINTED BY THE AUTHORITY
OF THE STATE OF ILLINOIS

DISTRICT ONE - PLAN PREP ENGINEER: KEN ENG (847) 705-4247

CONTRACT NO. 60J21

INDEX OF SHEETS

- 1 COVER SHEET
- 2 INDEX OF SHEETS, HIGHWAY STANDARDS, GENERAL NOTES, AND COMMITMENTS
- 3 SUMMARY OF QUANTITIES
- 4-5 TYPICAL SECTIONS
- 6-9 ROADWAY PLAN
- 10-13 PAVEMENT MARKING PLAN
- 14 LOOP DETECTORS PLAN
- 15 FRAMES AND LIDS ADJUSTMENT WITH MILLING (BD08)
- 16 PAVEMENT PATCHING FOR HMA SURFACED PAVEMENT (BD22)
- 17 CURB OR CURB AND GUTTER REMOVAL AND REPLACE (BD24)
- 18 BUTT JOINTS AND HMA TAPER (BD32)
- 19 HMA TAPER AT EDGE OF P.C.C. PAVEMENT (BD33)
- 20 TRAFFIC CONTROL AND PROTECTION FOR SIDE ROADS, INTERSECTIONS AND DRIVEWAYS (TC10)
- 21 RAISED REFLECTIVE PAVEMENT MARKERS, SNOW PLOW RESISTANT (TC11)
- 22 DISTRICT ONE TYPICAL PAVEMENT MARKINGS (TC13)
- 23 TRAFFIC CONTROL AND PROTECTION AT TURN BAYS (TO REMAIN OPEN TO TRAFFIC) (TC14)
- 24 PAVEMENT MARKING LETTERS AND SYMBOLS FOR TRAFFIC STAGING (TC-16)
- 25 ARTERIAL ROAD INFORMATION SIGN (TC22)
- 26 STANDARD TRAFFIC SIGNAL DESIGN DETAIL, SHEET 1 OF 6 (TS-05)
- 27 DETECTOR LOOP INSTALLATION DETAILS FOR ROADWAY RESURFACE (TS-07)

27A-27D BARRIER WALL REPAIR DETAILS

LIST OF ILLINOIS DOT HIGHWAY STANDARDS

- 000001-05 STANDARD SYMBOLS, ABBREVIATIONS, AND PATTERNS
- 442201-03 CLASS C AND D PATCHES
- 606001-04 CONCRETE CURB TYPE B AND COMBINATION CONCRETE CURB AND GUTTER
- 606301-04 PC CONCRETE ISLANDS AND MEDIANS
- 606306-03 CORRUGATED PC CONCRETE MEDIANS
- 635011-02 REFLECTOR MARKER AND MOUNTING DETAILS
- 701421-02 LANE CLOSURE, MULTILANE, DAY OPERATIONS ONLY FOR SPEEDS > OR = 45 MPH TO 55 MPH
- 701426-03 LANE CLOSURE, MULTILANE, INTERMITTENT OR MOVING OPERATIONS FOR SPEEDS > OR = 45 MPH
- 701701-06 URBAN LANE CLOSURE, MULTILANE INTERSECTION
- 701901-01 TRAFFIC CONTROL DEVICES
- 814001-02 HANDHOLES

COMMITMENTS

NO COMMITMENTS FOR THIS PROJECT

GENERAL NOTES

1. BEFORE STARTING ANY EXCAVATION, THE CONTRACTOR SHALL CALL "J.U.L.I.E." AT 800-892-0123 FOR FIELD LOCATIONS OF BURIED ELECTRIC, TELEPHONE, AND GAS FACILITIES. 48 HOUR NOTIFICATION IS REQUIRED.
2. THE CONTRACTOR SHALL COORDINATE CONSTRUCTION ACTIVITIES WITH THE UTILITY COMPANIES, CITY OF ELMHURST AND VILLAGE OF VILLA PARK.
3. THE CONTRACTOR WILL NOT BE ALLOWED TO SET UP A YARD OR FIELD OFFICE ON STATE PROPERTY WITHOUT WRITTEN PERMISSION FROM THE DEPARTMENT.
4. ANY PAVEMENT MARKINGS AND RAISED REFLECTIVE PAVEMENT MARKERS OBLITERATED BY MILLING AND RESURFACING OPERATIONS ON SIDE STREETS AND ENTRANCES SHALL BE REPLACED AND PAID FOR IN KIND.
5. ALL DAMAGE TO EXISTING PAVEMENT MARKING OR RAISED REFLECTIVE PAVEMENT MARKERS OUTSIDE THE REMOVAL LINE SHOWN ON THE PLANS SHALL BE REPLACED AT THE CONTRACTORS EXPENSE. NO ADDITIONAL COST TO THE DEPARTMENT.
6. BEFORE BEGINNING ANY WORK, THE CONTRACTOR SHALL RETAIN AND RECORD FOR FUTURE REFERENCES, ALL EXISTING PAVEMENT MARKING LINES AND RAISED REFLECTIVE PAVEMENT MARKERS IN ORDER THAT THESE LOCATIONS CAN BE RE-ESTABLISHED FOR STRIPING. EXACT LOCATIONS OF ALL STRIPING SHALL BE AS DIRECTED BY THE ENGINEER.
7. ALL PAVEMENT PATCHING LOCATIONS WILL BE DETERMINED IN THE FIELD BY THE ENGINEER.
8. LOCATIONS OF COMBINATION CONCRETE CURB AND GUTTER REMOVAL AND REPLACEMENT, WILL BE DETERMINED IN THE FIELD BY THE ENGINEER.
9. DRAINAGE ADJUSTMENT OR RECONSTRUCTION LOCATIONS WILL BE DETERMINED IN THE FIELD BY THE ENGINEER.
10. THE CONTRACTOR SHALL BE RESPONSIBLE FOR VERIFYING ALL DIMENSIONS AND CONDITIONS EXISTING IN THE FIELD PRIOR TO CONSTRUCTION AND ORDERING MATERIALS.
11. THE CONTRACTOR SHALL CONTACT THE DISTRICT ONE TRAFFIC CONTROL SUPERVISOR AT (847) 705-4470 A MINIMUM OF 72 HOURS IN ADVANCE OF BEGINNING WORK.
12. THE ENGINEER SHALL CONTACT DON CHIARUGI, THE TRAFFIC FIELD TECHNICIAN AT (847)741-9857 A MINIMUM OF TWO (2) WEEKS PRIOR TO THE PLACEMENT OF PERMANENT PAVEMENT MARKINGS.
13. THE CONTRACTOR SHALL BE REQUIRED TO PROVIDE ACCESS TO ABUTTING PROPERTY AT ALL TIMES DURING THE CONSTRUCTION OF THIS PROJECT.
14. DO NOT SCALE PLANS FOR CONSTRUCTION DIMENSIONS.
15. DOUBLE LANE MARKERS ARE TO BE USED AS SHOWN ON THE DISTRICT ONE DETAIL "TYPICAL APPLICATIONS - RAISED REFLECTIVE PAVEMENT MARKERS (SNOW-PLOW RESISTANT)" SHOWN ON THE PLANS.
16. WHEN MILLED PAVEMENT IS OPEN TO TRAFFIC THE MAXIMUM GRADE DIFFERENTIAL BETWEEN PASSES OF THE MILLING MACHINE SHALL NOT EXCEED 1 1/2 INCHES WHERE THE SPEED LIMIT IS 45 MPH OR LESS AND 1 INCH WHERE THE SPEED LIMIT IS GREATER THAN 45 MPH, WITH WRITTEN APPROVAL FROM THE ENGINEER. A MAXIMUM GRADE DIFFERENTIAL OF 3 INCHES MAY BE ALLOWED IF THE EDGE OF THE MILLING IS SLOPED A MINIMUM 1:3 (V:H).
17. BUTT JOINTS WILL BE INSTALLED AT THE ENDS OF ALL RESURFACING (WHERE RESURFACING MEETS EXISTING PAVEMENT), IN ACCORDANCE WITH THE "BUTT JOINT AND HOT-MIX ASPHALT TAPER DETAILS" SHEET INCLUDED IN THE PLANS UNLESS OTHERWISE SPECIFIED.
18. PAVEMENT MARKING TAPE, TYPE III SHALL BE USED FOR SHORT TERM PAVEMENT MARKINGS ON ALL FINAL SURFACES. THE COST OF THE PAVEMENT MARKING TAPE, TYPE III AND IT'S REMOVAL SHALL BE INCLUDED IN THE COST OF SHORT TERM PAVEMENT MARKING.
19. THE CONTRACTOR SHALL PLACE PROPOSED PAVEMENT MARKINGS IN ACCORDANCE WITH DISTRICT 1 TYPICAL PAVEMENT MARKINGS DETAIL (TC-13).
20. THE CONTRACTOR SHALL INSTALL THE BARRIER WALL MARKERS ALONG THE EXISTING CONCRETE BARRIER WALL IN ACCORDANCE WITH HIGHWAY STANDARD 635011 AND AS DIRECTED BY THE ENGINEER.

P:\2009\ME09006_Ver-Yor-PH1\CADD\W08_IL835\Shets\02-0160J21-shr-IL835-GNOTE.dgn
 FILE NAME =
 USER NAME =
 MILLENIA Professional Services



200 22ND Street, Suite 216, Lombard, IL 60148
 630.705.0110 voice, 630.839.2566 fax
 www.mps-ill.com
MILLENNIA PROFESSIONAL SERVICES

DESIGNED - CJD	REVISED -
DRAWN - CJD	REVISED -
CHECKED - RPD	REVISED -
DATE - 2/22/2010	REVISED -

**STATE OF ILLINOIS
DEPARTMENT OF TRANSPORTATION**

**ILLINOIS ROUTE 83 (SOUTH)
ILLINOIS RTE 56 TO WASHINGTON ST**

**INDEX OF SHEETS, LIST OF IDOT
HIGHWAY STANDARD, GENERAL NOTES,
AND COMMITMENTS**

F.A.P. RTE.	SECTION	COUNTY	TOTAL SHEETS	SHEET NO.
344	543 R-1-RS		27	2
CONTRACT NO. 60J21				
FED. ROAD DIST. NO. 1 ILLINOIS FED. AID PROJECT				

Rev. 4-7-10

P:\2009\ME09006_Ver-Yor-PH1\CADD\W08_IL835\Shets\02-0160J21-shr-IL835-GNOTE.dgn

URBAN

SUMMARY OF QUANTITIES			TOTAL QUANTITY	CONSTRUCTION TYPE CODE
CODE NO.	ITEM DESCRIPTION	UNIT	100% STATE	1000 QUANTITY
40600200	BITUMINOUS MATERIALS (PRIME COAT)	TON	43	43
40600300	AGGREGATE (PRIME COAT)	TON	211	211
40600400	MIXTURE FOR CRACKS, JOINTS, AND FLANGWAYS	TON	160	160
40600826	POLYMERIZED LEVELING BINDER (MACHINE METHOD), IL-4.75, N50	TON	4350	4350
40600895	CONSTRUCTING TEST STRIP	EACH	1	1
40600982	HOT-MIX ASPHALT SURFACE REMOVAL-BUTT JOINT	SQ YD	794	794
40601005	HOT-MIX ASPHALT REPLACEMENT OVER PATCHES	TON	400	400
40603153	POLYMERIZED HOT-MIX ASPHALT SURFACE COURSE, STONE MATRIX ASPHALT, N80	TON	10,520	10,520
40603340	HOT-MIX ASPHALT SURFACE COURSE, MIX "D", N70	TON	2300	2300
44000157	HOT-MIX ASPHALT SURFACE REMOVAL, 2"	SQ YD	15570	15570
44000158	HOT-MIX ASPHALT SURFACE REMOVAL, 2 1/4"	SQ YD	27380	27380
44000160	HOT-MIX ASPHALT SURFACE REMOVAL, 2 3/4"	SQ YD	62928	62928
44001700	COMBINATION CONCRETE CURB AND GUTTER REMOVAL AND REPLACEMENT	FOOT	60	60
44002216	HOT-MIX ASPHALT REMOVAL OVER PATCHES, 4"	SQ YD	1785	1785
44213200	SAW CUTS	FOOT	9632	9632
44201737	CLASS D PATCHES, TYPE I, 8 INCH	SQ YD	50	50
44201741	CLASS D PATCHES, TYPE II, 8 INCH	SQ YD	1067	1067
44201745	CLASS D PATCHES, TYPE III, 8 INCH	SQ YD	212	212
44201747	CLASS D PATCHES, TYPE IV, 8 INCH	SQ YD	339	339
45100200	CRACK FILLING	POUND	3564	3564
55039700	STORM SEWERS TO BE CLEANED	FOOT	456	456
60252800	CATCH BASINS TO BE RECONSTRUCTED	EACH	5	5
60257900	MANHOLES TO BE RECONSTRUCTED	EACH	5	5
60300305	FRAMES AND LIDS TO BE ADJUSTED	EACH	5	5
60300310	FRAMES AND LIDS TO BE ADJUSTED (SPECIAL)	EACH	6	6
60404950	FRAMES AND GRATES, TYPE 24	EACH	5	5
60406000	FRAMES AND LIDS, TYPE 1, OPEN LID	EACH	5	5
60406100	FRAMES AND LIDS, TYPE 1, CLOSED LID	EACH	5	5
67000400	ENGINEER'S FIELD OFFICE, TYPE A	CAL MO	6	6
67100100	MOBILIZATION	L SUM	1	1

* SPECIALTY ITEM

URBAN

SUMMARY OF QUANTITIES			TOTAL QUANTITY	CONSTRUCTION TYPE CODE
CODE NO.	ITEM DESCRIPTION	UNIT	100% STATE	1000 QUANTITY
70100310	TRAFFIC CONTROL AND PROTECTION, STANDARD 701421	L SUM	1	1
70102635	TRAFFIC CONTROL AND PROTECTION, STANDARD 701701	L SUM	1	1
70300100	SHORT-TERM PAVEMENT MARKING	FOOT	9985	9985
70300210	TEMPORARY PAVEMENT MARKING - LETTERS AND SYMBOLS	SQ FT	583	583
70300220	TEMPORARY PAVEMENT MARKING - LINE 4"	FOOT	67782	67782
70300240	TEMPORARY PAVEMENT MARKING - LINE 6"	FOOT	2230	2230
70300250	TEMPORARY PAVEMENT MARKING - LINE 8"	FOOT	9316	9316
70300260	TEMPORARY PAVEMENT MARKING - LINE 12"	FOOT	8976	8976
70300280	TEMPORARY PAVEMENT MARKING - LINE 24"	FOOT	372	372
70301000	WORK ZONE PAVEMENT MARKING REMOVAL	SQ FT	1110	1110
* 78000100	THERMOPLASTIC PAVEMENT MARKING - LETTERS AND SYMBOLS	SQ FT	291	291
* 78000200	THERMOPLASTIC PAVEMENT MARKING - LINE 4"	FOOT	33891	33891
* 78000400	THERMOPLASTIC PAVEMENT MARKING - LINE 6"	FOOT	1115	1115
* 78000500	THERMOPLASTIC PAVEMENT MARKING - LINE 8"	FOOT	4648	4648
* 78000600	THERMOPLASTIC PAVEMENT MARKING - LINE 12"	FOOT	4488	4488
* 78000650	THERMOPLASTIC PAVEMENT MARKING - LINE 24"	FOOT	186	186
* 78100100	RAISED REFLECTIVE PAVEMENT MARKER	EACH	863	863
* 78200530	BARRIER WALL MARKERS, TYPE C	EACH	151	151
* 78300200	RAISED REFLECTIVE PAVEMENT MARKER REMOVAL	EACH	863	863
* 88600600	DETECTOR LOOP REPLACEMENT	FOOT	789	789
* X0322256	TEMPORARY INFORMATION SIGNING	SQ FT	52	52
* X8950200	REBUILD EXISTING HANDHOLE	EACH	2	2
* X8950210	REBUILD EXISTING HANDHOLE TO HEAVY-DUTY HANDHOLE	EACH	2	2
Z0018500	DRAINAGE STRUCTURES TO BE CLEANED	EACH	98	98
X0324686	TEST STRIP (STONE MATRIX ASPHALT)	EACH	1	1
X0323723	CONCRETE BARRIER WALL REMOVAL AND REPLACEMENT (LOCATION 1)	L SUM	1	1

FILE NAME : P:\2009\ME\0906_Ver-Vor-Phi\CADD\W08_ILB35\5ts\03-D168J21-shr-ILB35-S00.dgn
 USER NAME : Millennium Professional Services



200 22ND Street, Suite 216, Lombard, IL 60148
 630.785.8110 voice, 630.839.2566 fax
 www.mps-il.com

MILLENNIA PROFESSIONAL SERVICES

DESIGNED - CJD	REVISED -
DRAWN - CJD	REVISED -
CHECKED - RPD	REVISED -
DATE - 2/23/2010	REVISED -

STATE OF ILLINOIS
 DEPARTMENT OF TRANSPORTATION

ILLINOIS ROUTE 83 (SOUTH)
 ILLINOIS RTE 56 TO WASHINGTON ST

SUMMARY OF QUANTITIES

F.A.P. RTE	SECTION	COUNTY	TOTAL SHEETS	SHEET NO.
344	543 R-1-RS	DUPAGE	27	3
CONTRACT NO. 60J21				

SCALE: NTS SHEET NO. OF SHEETS STA. TO STA.

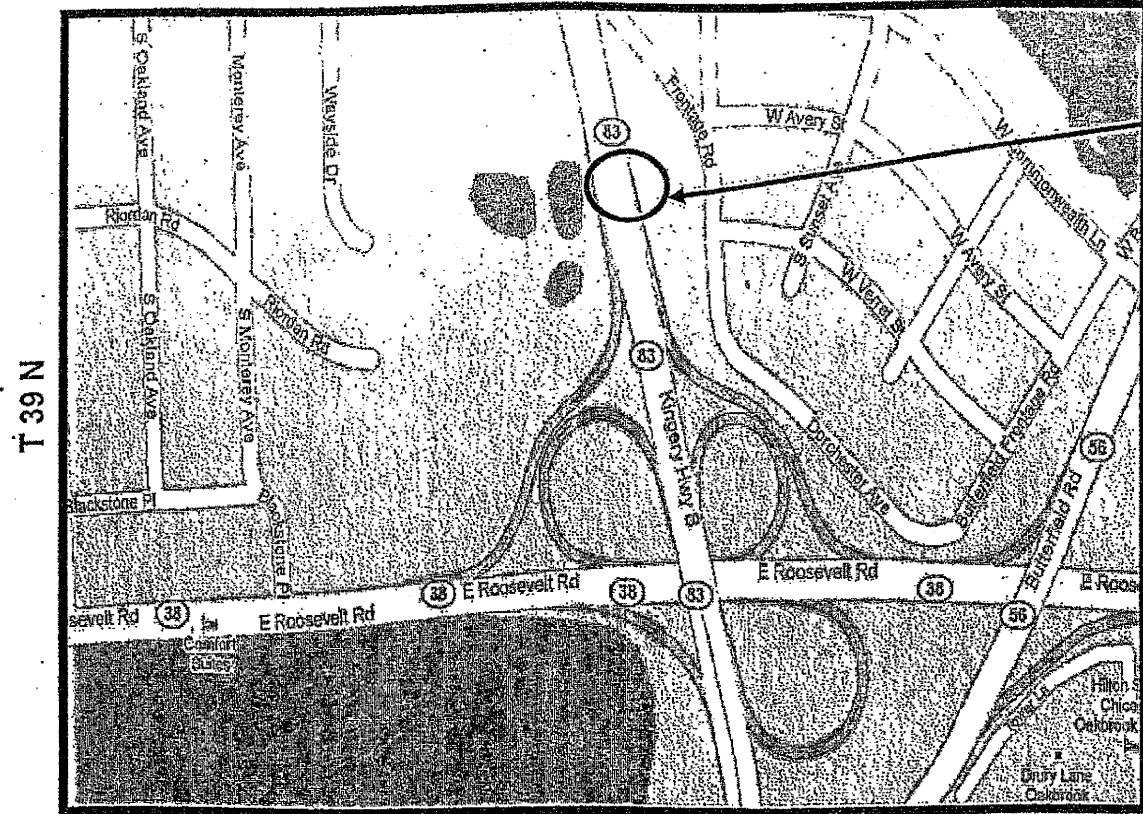
FED. ROAD DIST. NO. 1 ILLINOIS FED. AID PROJECT

P:\2009\ME\0906_Ver-Vor-Phi\CADD\W08_ILB35\5ts\03-D168J21-shr-ILB35-S00.dgn

ROUTE	SECTION	COUNTY	TOTAL SHEETS	SHEET NUMBER
344	5A3 R-1-R5	DUPAGE	27	27A

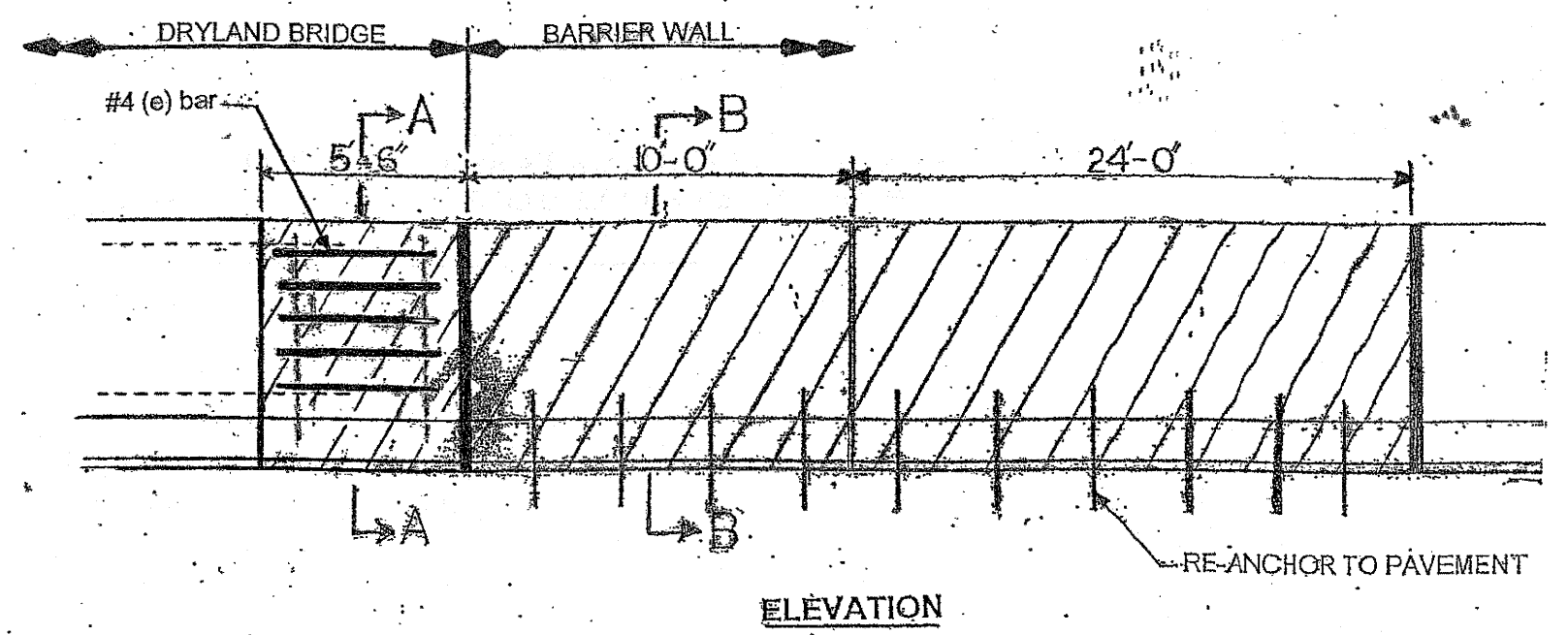
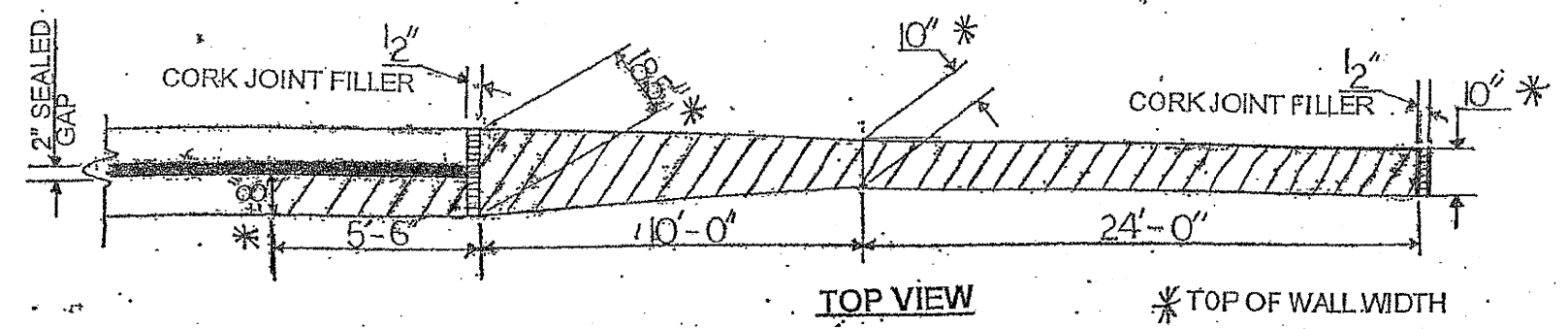
Contract 60J21

R 11 E

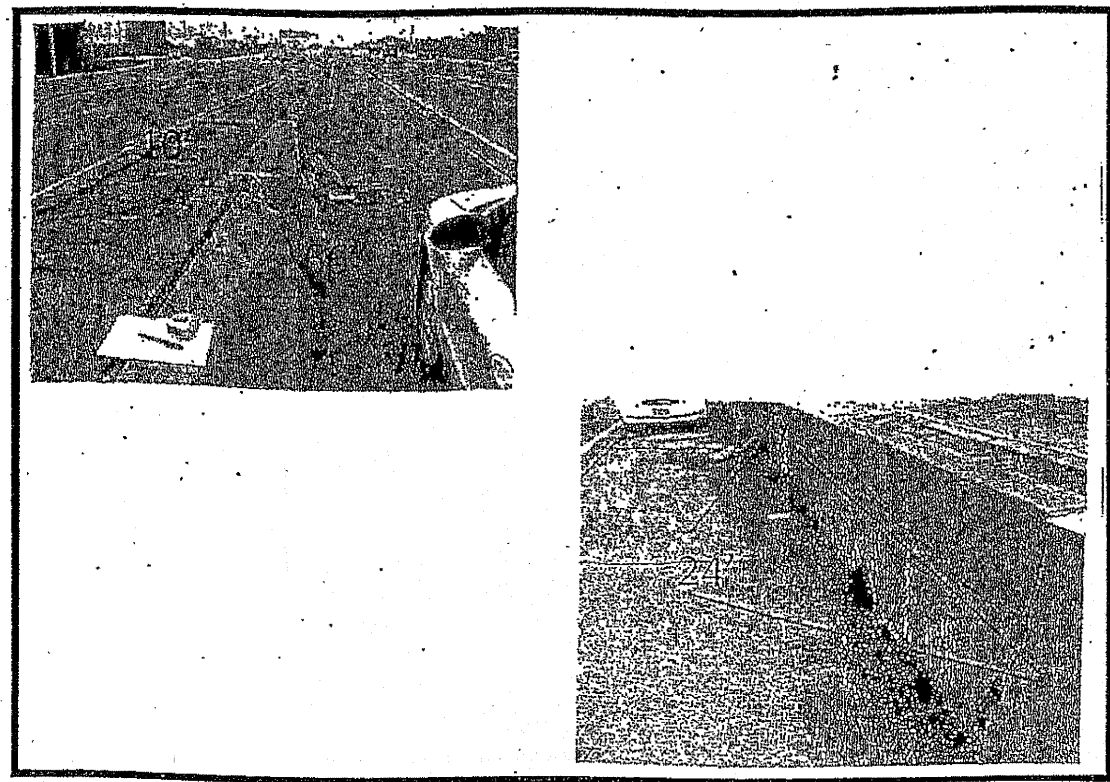


VILLAGE OF OAKBROOK
YORK TOWNSHIP
DuPAGE COUNTY

LOCATION 19: SB AT ROUTE 83 AT EXIT RAMP TO WB ROOSEVELT ROAD, LEFT SIDE MEDIAN WALL.



HATCHED AREA INDICATES CONCRETE REMOVAL
□ INDICATES LIMITS OF CONCRETE STRUCTURES



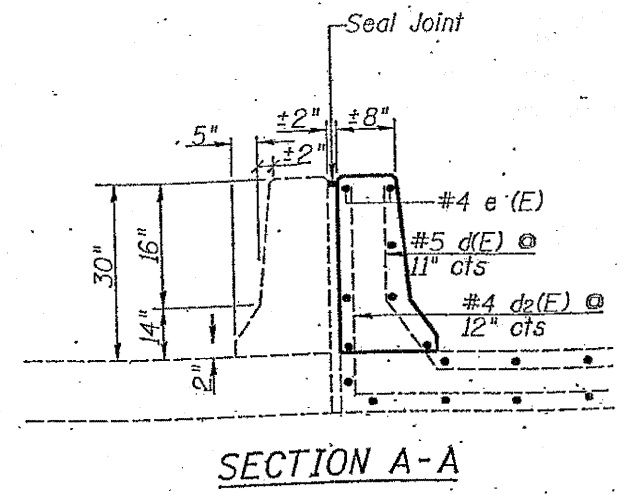
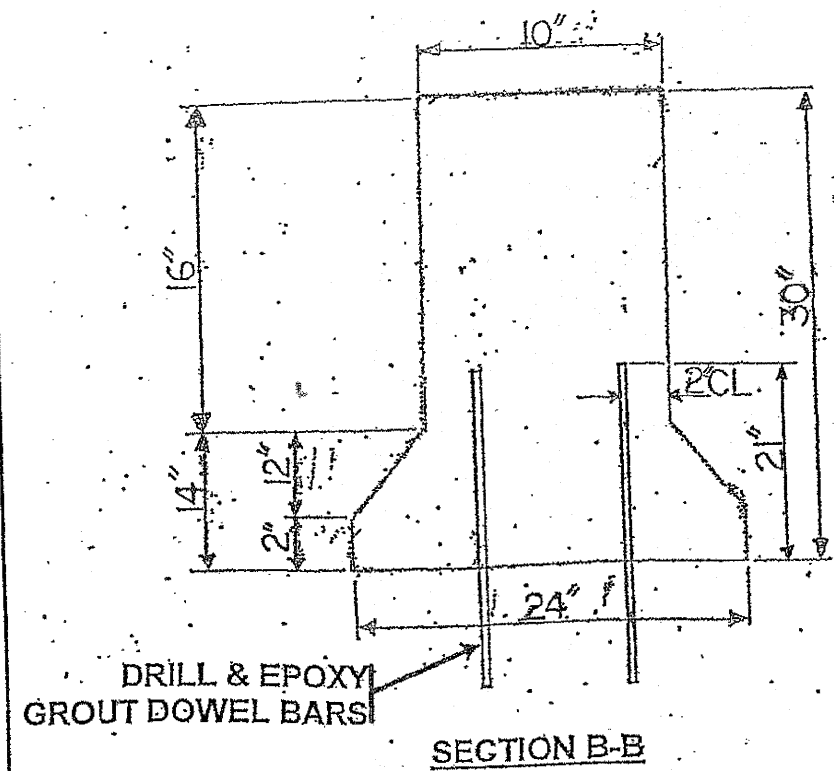
TRAFFIC DATA:
ROUT 83: SPEED LIMIT = 50 MPH
2009 ADT = 68,000

SHEET 1 OF 2

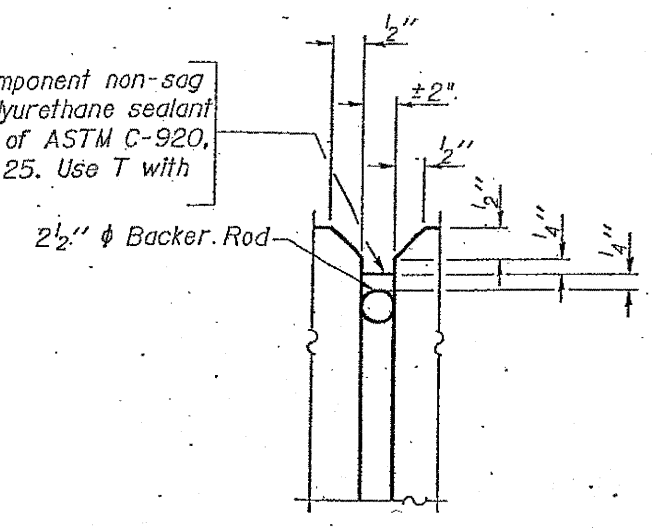
ILLINOIS DEPARTMENT OF TRANSPORTATION
LOCATION: 1
ROUTE 83 (SB)
Added Sheet 4-7-10

ROUTE	SECTION	COUNTY	TOTAL SHEETS	SHEET NUMBER
344	543 R-1-RS	DUPAGE	27	27B

Contract 60J21



Non-staining gray one component non-sag elastomeric gun grade polyurethane sealant meeting the requirements of ASTM C-920, Type S, Grade NS, Class 25. Use T with a 5/8" backer rod.



FULL DEPTH BARRIER REPAIR
SEE SHEET 4 FOR MORE DETAILS

Concrete Removal (Cu Yd)	4.3
Concrete Structure (Cu Yd)	4.3

FOR INFORMATION ONLY

BRIDGE PARAPET REPAIR
SEE SHEET 5 FOR MORE DETAILS

Bar	No.	Size	Length	Shape
e (E)	8	#4	5'-3"	—
Reinforcement Bars, Epoxy Coated			Lbs.	30
Concrete Superstructure			Cu. Yds.	0.4
Concrete Removal			Cu. Yds.	0.3
Mechanical Splicers			Each	8

FOR INFORMATION ONLY

SHEET 2 OF 2

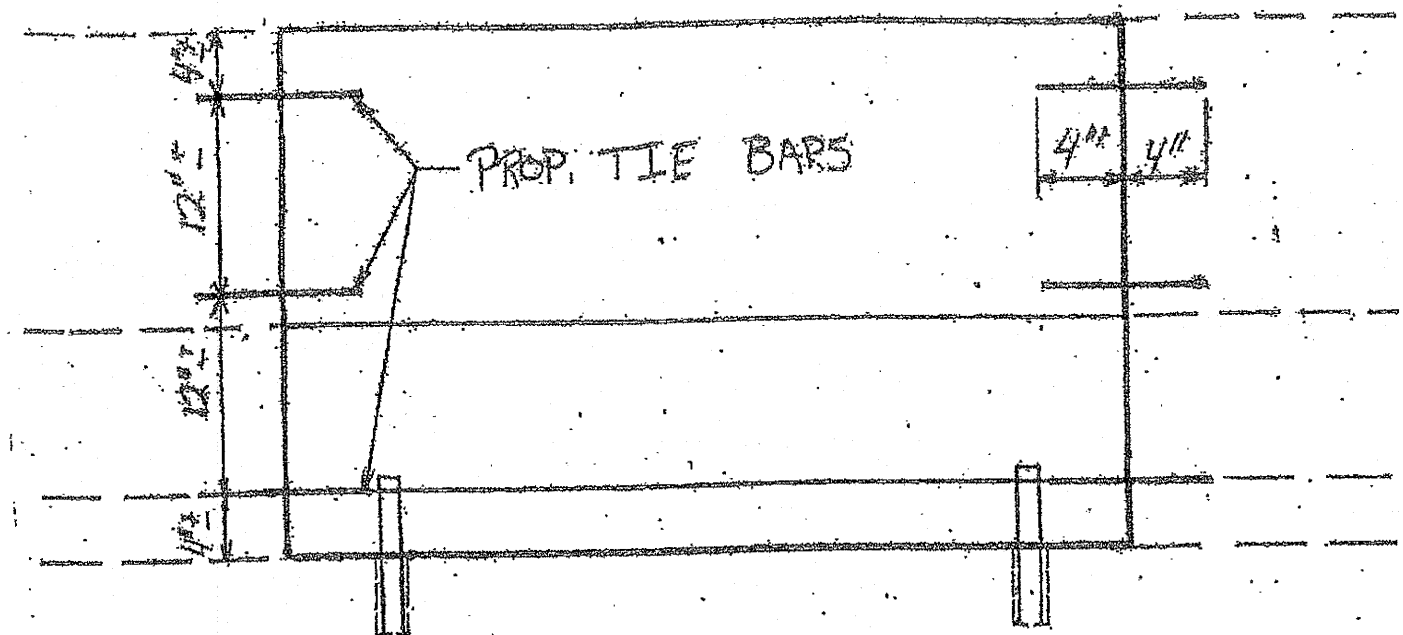
ILLINOIS DEPARTMENT OF TRANSPORTATION

LOCATION: 1
ROUTE 83 (SB)

Added Sheet 4-7-10

ROUTE	SECTION	COUNTY	TOTAL SHEETS	SHEET NUMBER
344	5A3 R-1-R5	DUPAGE	27	27C

Contract 6W21



FULL DEPTH REPAIR

NOTE:

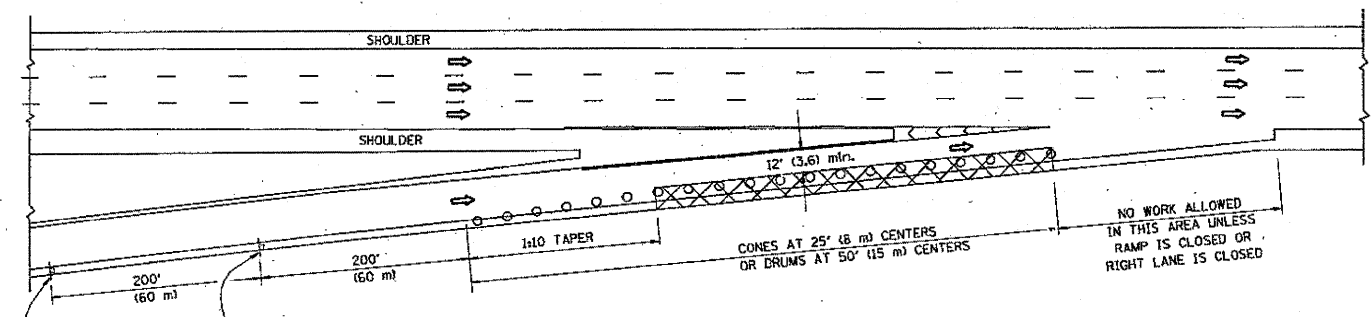
ALL BARRIER WALL REPAIR SHALL BE COMPLETED IN ACCORDANCE WITH STATE STANDARD 637001 AND SECTION 637 OF THE STANDARD SPECIFICATIONS AND AS SHOWN ON THE PLANS. ALL PROPOSED DOWEL BARS AND TIE BARS SHALL BE DRILLED AND GROUTED IN PLACE. REINFORCEMENT SHALL BE INCLUDED AS SHOWN IN STANDARD 637001 AND DESCRIBED IN SECTION 637 OF THE STANDARD SPECIFICATIONS EXCEPT WHEN A REINFORCEMENT CAGE IS ENCOUNTERED. IN SUCH A CASE, THE CONTRACTOR SHALL REMOVE THE DAMAGED PORTIONS OF THE CAGE AND SHALL REPLACE IT WITH BARS OF THE SAME SIZE AND SPACING. THE SCOPE OF REPAIR AT EACH LOCATION SHALL BE AS SHOWN ON THE PLANS AND APPROVED BY THE ENGINEER PRIOR TO CONSTRUCTION.

ILLINOIS DEPARTMENT OF TRANSPORTATION
 TYPICAL REPAIR FOR
 FULL DEPTH (BARRIER WALL)
 Added Sheet 4-7-10

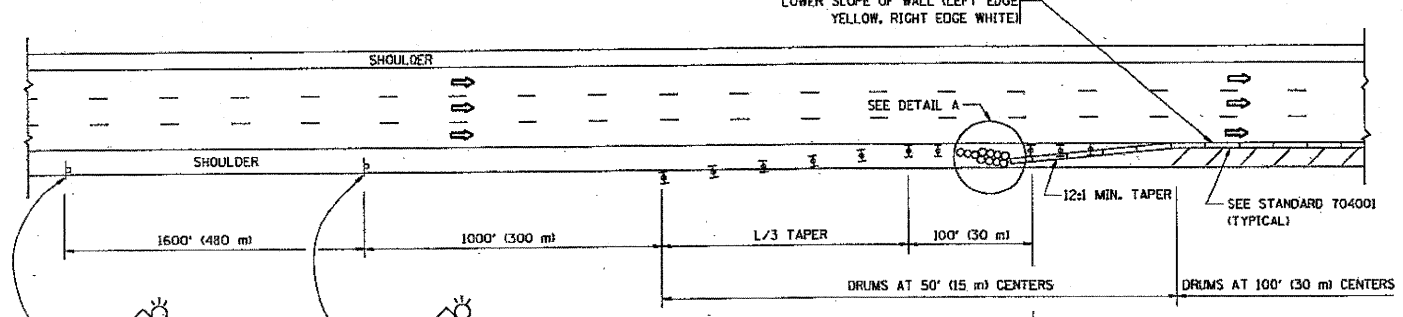
PARTIAL RAMP CLOSURE DETAILS

SHOULDER CLOSURE DETAILS

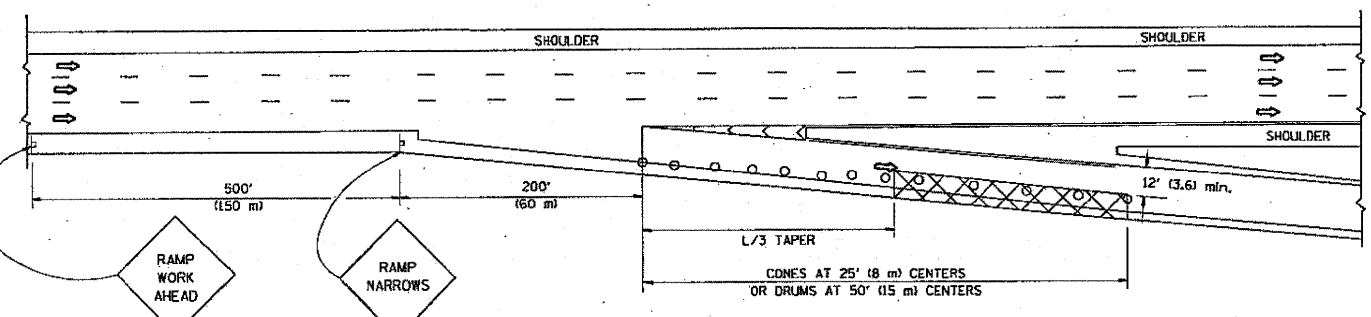
REFLECTIVE G (150) EDGE LINE ON LOWER SLOPE OF WALL (LEFT EDGE YELLOW, RIGHT EDGE WHITE)



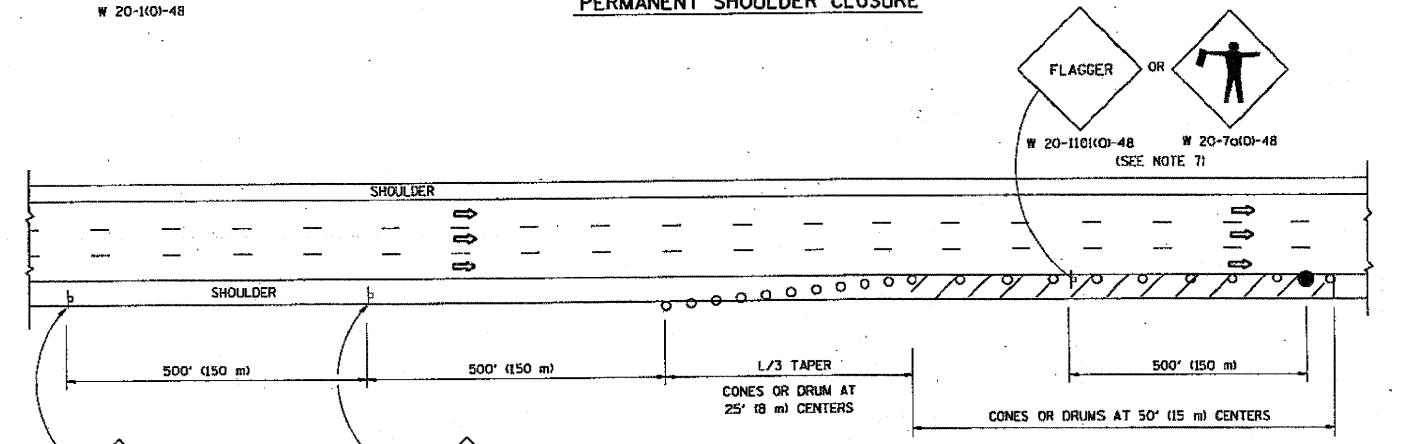
TYPICAL ENTRANCE RAMP



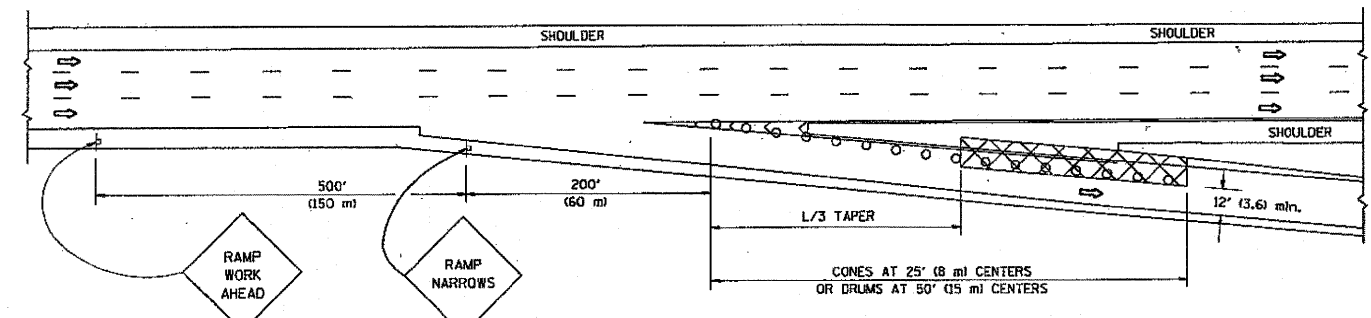
PERMANENT SHOULDER CLOSURE



TYPICAL EXIT RAMP



DAYTIME SHOULDER CLOSURE



TYPICAL EXIT RAMP

OR WHEN SPECIFIED INSTALL TEMPORARY CONCRETE BARRIER WALL WITH BARRIER WALL REFLECTORS PER TRAFFIC CONTROL AND PROTECTION (EXPRESSWAYS)

THIS DETAIL IS USED WHERE:
1. VEHICLES, EQUIPMENT, WORKERS OR THEIR ACTIVITIES ENCR OACH IN AN AREA CLOSER THAN 15' (4.5 m) TO THE EDGE OF PAVEMENT FOR A PERIOD IN EXCESS OF 15 MINUTES.

ARRAY DESIGN PER MANUFACTURER TO BE NCHRP 350 COMPLIANT.

DETAIL "A"
IMPACT ATTENUATOR, TEMPORARY
(SEE NOTE 5)

SYMBOLS

- ACTIVE WORK AREA
- SIGN ON PORTABLE OR PERMANENT SUPPORT
- FLAGGER WITH CONTROL SIGN
- TYPE II BARRICADE, DRUM OR VERTICAL BARRICADE WITH STEADY BURN MONO-DIRECTIONAL LIGHT
- CONE, DRUM OR BARRICADE

GENERAL NOTES

1. THE "L" DISTANCE EQUALS:
SPEED LIMIT FORMULAS
45 mph (80 km/h) METRIC ENGLISH
OR GREATER L=0.65(W/S) L=(W/S)

W = WIDTH OF OFFSET IN FEET (METERS)
S = NORMAL POSTED SPEED MPH (KM/H)
2. PLASTIC DRUMS WITH HIGH PERFORMANCE REFLECTIVE SHEETING AND STEADY BURNING LIGHTS ARE REQUIRED FOR ALL NIGHTTIME CLOSURES.
3. ALL SIGNS SHALL BE POST MOUNTED IF THE CLOSURE TIME EXCEEDS FOUR DAYS.
4. FLASHING LIGHTS SHALL BE USED DURING THE HOURS OF DARKNESS AND SHALL BE INSTALLED ABOVE THE FIRST TWO SETS OF SIGNS.

5. THE IMPACT ATTENUATOR, TEMPORARY IS NOT REQUIRED WHEN THE TEMPORARY CONCRETE BARRIER WALL IS PROTECTED BY OR IS TIED INTO THE EXISTING GUARDRAIL. IF OFFSET IS LESS THAN 5 FEET USE NARROW USE TYPE DEVICE TO MEET NCHRP350.
6. AUTHORIZATION FROM THE DISTRICT'S BUREAU OF TRAFFIC IS REQUIRED FOR ALL FREEWAY CLOSURES.
7. THE FLAGGER AND FLAGGER SIGN ARE REQUIRED AT THE ABOVE WORK SITES WHEN:
 - a. FOUR OR MORE WORK VEHICLES ENTER THE TRAFFIC LANES IN A ONE HOUR PERIOD.
 - b. THE WORK ACTIVITY REQUIRES FREQUENT ENCR OACHMENT INTO THE LANE OPEN TO TRAFFIC.
 THE FLAGGER SHALL BE STATIONED APPROXIMATELY 100' (30 m) TO 200' (60 m) IN ADVANCE OF THE WORKERS.

ALL DIMENSIONS ARE IN INCHES (MILLIMETERS) UNLESS OTHERWISE SHOWN.

FILE NAME =	USER NAME = hamdanah	DESIGNED -	REVISED - 04-03	STATE OF ILLINOIS DEPARTMENT OF TRANSPORTATION	TRAFFIC CONTROL DETAILS FOR FREEWAY SHOULDER CLOSURES AND PARTIAL RAMP CLOSURES			F.A. RTE.	SECTION	COUNTY	TOTAL SHEETS	SHEET NO.
on:\p\work\PH1001\HAMDANAH\08176591\019	Std.dgn	DRAWN - D.W.S.	REVISED - J.A.F. 12-06		SCALE: NONE	SHEET NO. 1 OF 1 SHEETS	STA. TO STA.	314	803 R-1-BS	DAWAGE	27	27D
	PLOT SCALE = 1/83.1218' / 1" IN.	CHECKED -	REVISED - S.P.B. 01-07					TC-17		CONTRACT No.	60021	
	PLOT DATE = 3/16/2010	DATE - 11-96	REVISED - S.P.B. 12-09									

Added Sheet 4-7-10