

|                     |          |                    |              |           |
|---------------------|----------|--------------------|--------------|-----------|
| F.A.P. RTE.         | SECTION  | COUNTY             | TOTAL SHEETS | SHEET NO. |
| 351                 | 539 B-1  | COOK               | 2            | 1         |
| FED. ROAD DIST. NO. | ILLINOIS | CONTRACT NO. 60J36 |              |           |

D-91-226-10

STATE OF ILLINOIS  
DEPARTMENT OF TRANSPORTATION  
DIVISION OF HIGHWAYS

**PLANS FOR PROPOSED  
FEDERAL AID HIGHWAY**

(F.A.P. ROUTE 351) US ROUTE 6 (159th St.)  
OVER CAL UNION DITCH (0.9 MI EAST OF ILL 1)

SECTION: 539 B-1

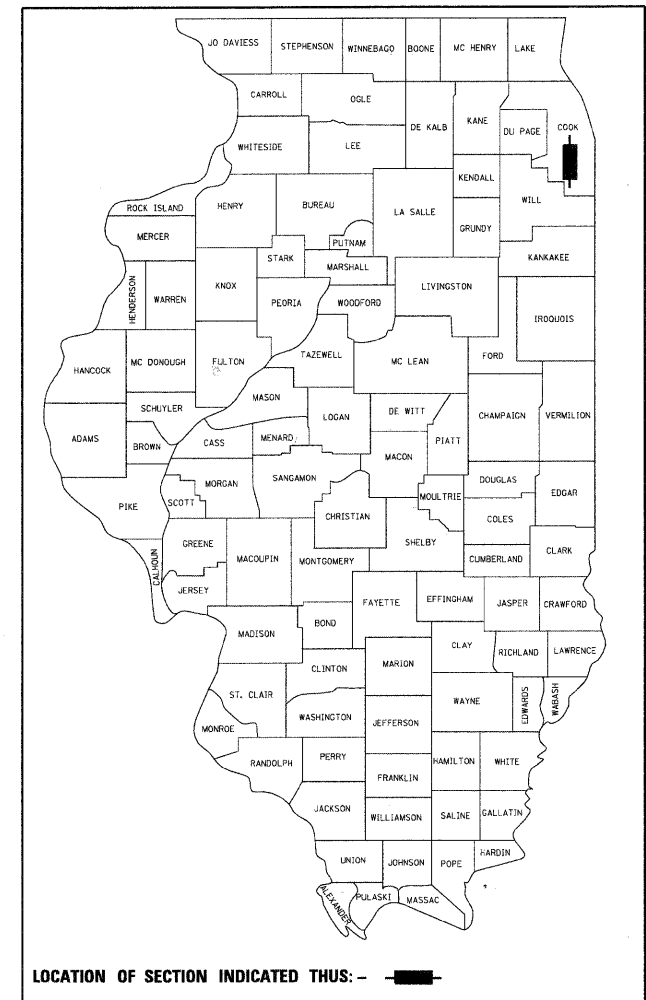
COOK COUNTY

C-91-226-10

PROJECT: NHF-0351(022)

BRIDGE REHABILITATION PROJECT

SN 016-0386



LOCATION OF SECTION INDICATED THUS: - [black rectangle] -

STATE OF ILLINOIS  
DEPARTMENT OF TRANSPORTATION  
DIVISION OF HIGHWAYS

SUBMITTED JANUARY 28, 2010

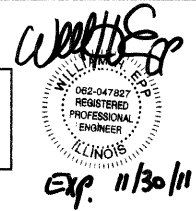
Diana M. O'Keefe *gr*  
DEPUTY DIRECTOR OF HIGHWAYS, REGION ENGINEER

March 19, 2010  
Scott E. Stitt, P.E. *SD*  
Acting ENGINEER OF DESIGN AND ENVIRONMENT

March 19, 2010  
Christine M. Reed *SD*  
DIRECTOR OF HIGHWAYS, CHIEF ENGINEER

PRINTED BY THE AUTHORITY  
OF THE STATE OF ILLINOIS

LONGCO, INC.  
CONSULTING ENGINEERS  
1560 WALL ST., SUITE 222  
NAPERVILLE, ILLINOIS 60563 PH: (630) 577-9100



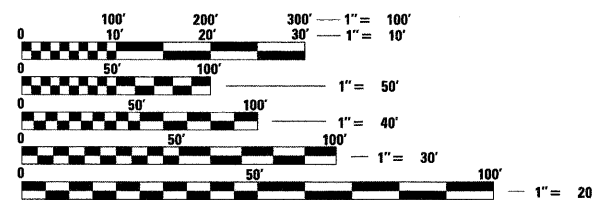
Exp. 11/30/11

PROJECT LOCATED IN THE VILLAGE OF  
HARVEY, ILLINOIS

FOR INDEX OF SHEETS, SEE SHEET NO. 2

DESIGN DESIGNATION  
MINOR ARTERIAL

ADT 23,300 (2005)  
POSTED SPEED LIMIT 35 MPH

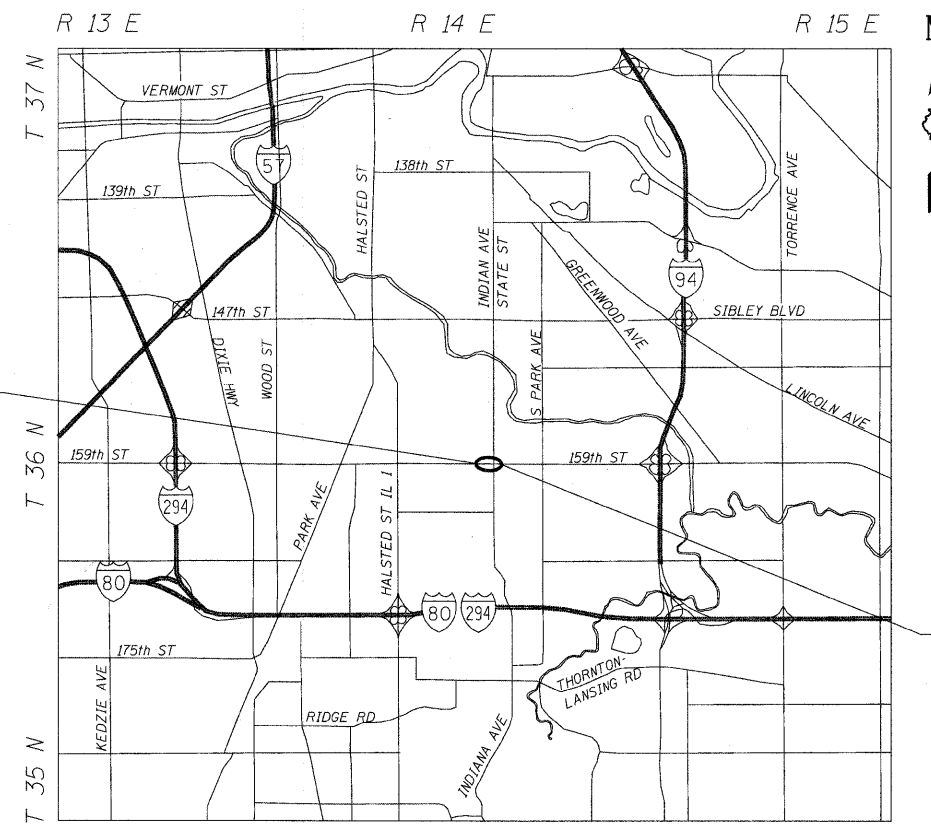


FULL SIZE PLANS HAVE BEEN PREPARED USING STANDARD  
ENGINEERING SCALES. REDUCED SIZED PLANS WILL NOT  
CONFORM TO STANDARD SCALES. IN MAKING MEASUREMENTS  
ON REDUCED PLANS, THE ABOVE SCALES MAY BE USED.

J.U.L.I.E.  
JOINT UTILITY LOCATION INFORMATION FOR EXCAVATION  
1-800-892-0123  
OR 811

PROJECT MANAGER: KIM HARVEY (847) 705-4055  
PROJECT ENGINEER: ERSKINE W. KLYCE (847) 705-4594

CONTRACT NO. 60J36



PROJECT BEGINS  
STA. 91+81.22

PROJECT ENDS  
STA. 92+79.51

LOCATION MAP

NET AND GROSS LENGTH OF PROJECT = 98.29' = 0.019 MI