

STATE OF ILLINOIS
DEPARTMENT OF TRANSPORTATION
DIVISION OF HIGHWAYS

F.A.P. RTE.	SECTION	COUNTY	TOTAL SHEETS	SHEET NO.
330	462 X-B-I	COOK	54	1
FED. ROAD DIST. NO.	ILLINOIS	CONTRACT NO. 60J37		

D-91-227-10

PROJECT LOCATED IN THE VILLAGE OF HODGKINS AND THE VILLAGE OF WILLOW SPRINGS IN COOK COUNTY, IL

PLANS FOR PROPOSED
FEDERAL AID HIGHWAY

FOR INDEX OF SHEETS, SEE SHEET NO. 2

F.A.P. ROUTE 330 US ROUTE 12, 20, 45 SOUTHBOUND (LAGRANGE RD)
OVER SANTA FE DR, RRS, DES PLAINES (0.5 MI SOUTH OF I-55)

SECTION: 462 X-B-I

COOK COUNTY

C-91-227-10

PROJECT: NHF-0330(061)

NORTH BRIDGE REHABILITATION

SN 016-2407

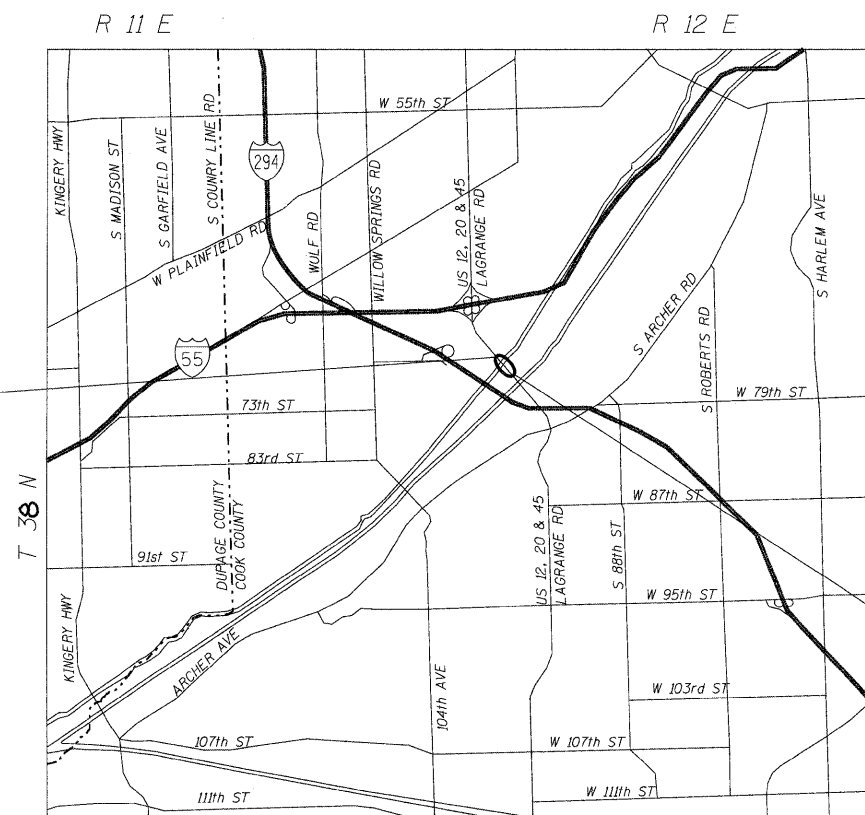


LOCATION OF SECTION INDICATED THIS: - [black rectangle] -

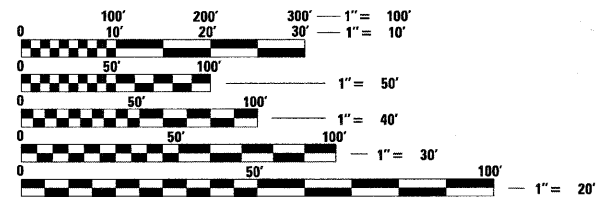
DESIGN DESIGNATION
OTHER PRINCIPAL ARTERIAL

ADT 67400 (2005)
POSTED SPEED LIMIT 45 MPH

PROJECT BEGINS
STA. 69+00.70



PROJECT ENDS
STA. 31+99.36



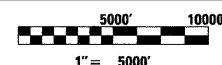
FULL SIZE PLANS HAVE BEEN PREPARED USING STANDARD ENGINEERING SCALES. REDUCED SIZED PLANS WILL NOT CONFORM TO STANDARD SCALES. IN MAKING MEASUREMENTS ON REDUCED PLANS, THE ABOVE SCALES MAY BE USED.

J.U.L.I.E.
JOINT UTILITY LOCATION INFORMATION FOR EXCAVATION
1-800-892-0123
OR 811

PROJECT MANAGER: KIM HARVEY (847) 705-4055
PROJECT ENGINEER: ERSKINE W. KLYCE (847) 705-4594

CONTRACT NO. 60J37

LYONS TOWNSHIP
LOCATION MAP



NET AND GROSS LENGTH OF PROJECT = 3701.34' = 0.701 MI

STATE OF ILLINOIS
DEPARTMENT OF TRANSPORTATION
DIVISION OF HIGHWAYS

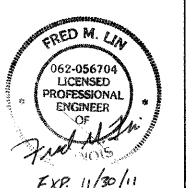
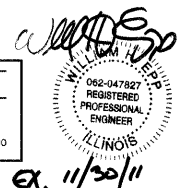
SUBMITTED JANUARY 29, 2010
Diana M. O'Keefe
DEPUTY DIRECTOR OF HIGHWAYS, REGION ENGINEER

March 19, 2010
Scott E. Stitt P.E.
ENGINEER OF DESIGN AND ENVIRONMENT

March 19, 2010
Christine M. Reed
DIRECTOR OF HIGHWAYS, CHIEF ENGINEER

PRINTED BY THE AUTHORITY
OF THE STATE OF ILLINOIS

LONCO, INC.
CONSULTING ENGINEERS
1560 WALL ST., SUITE 222
NAPERVILLE, ILLINOIS 60563 PH: (630) 577-9100



EX. 11/30/11

EXP. 11/30/11