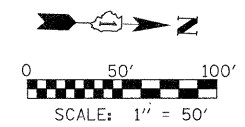
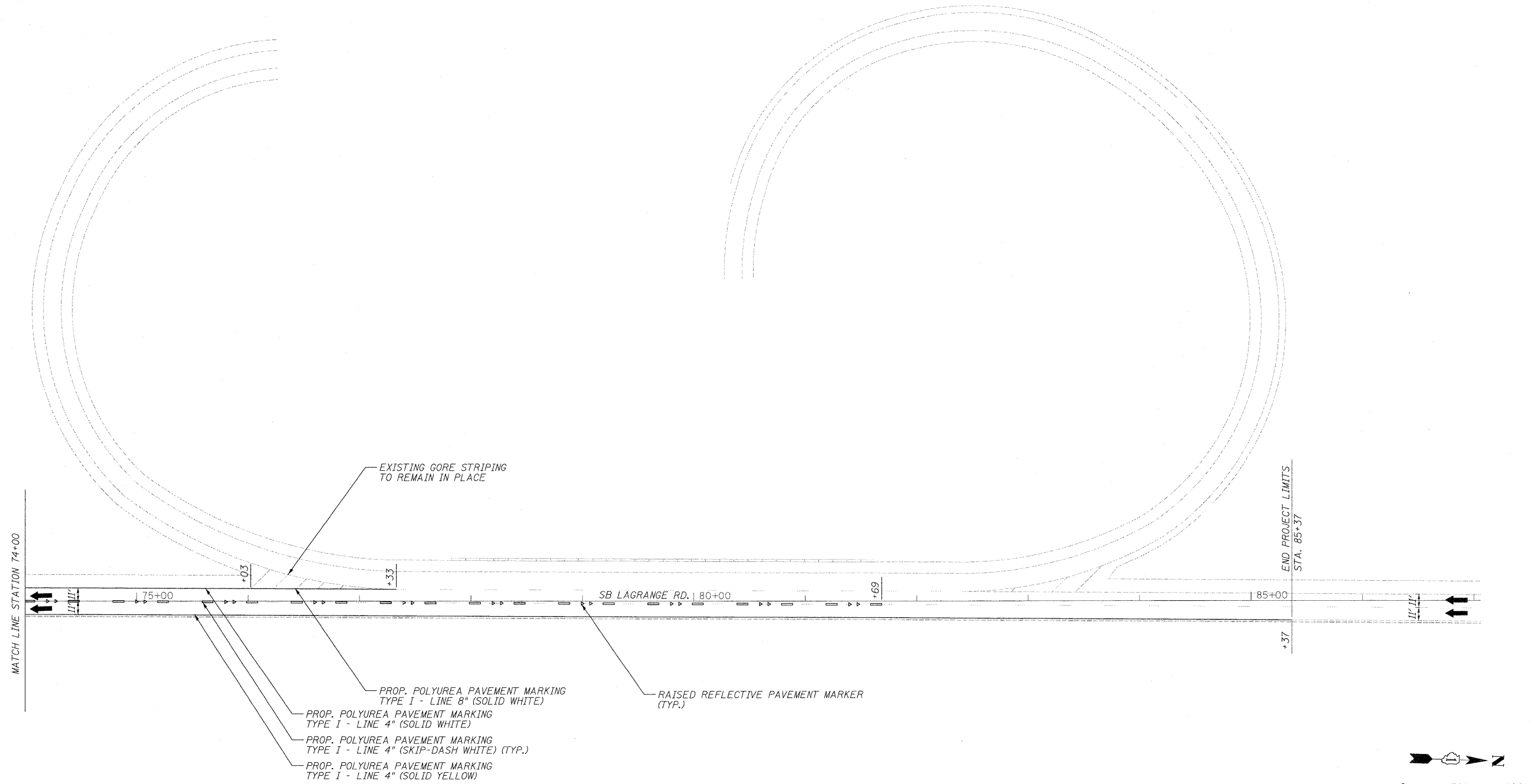


GENERAL NOTES:

1. ALL PROPOSED PAVEMENT MARKINGS SHALL BE PLACED IN ACCORDANCE WITH "DISTRICT ONE TYPICAL PAVEMENT MARKINGS" (TC-13).
2. POLYUREA PAVEMENT MARKING TYPE 1 - LINE 4" SOLID WHITE SHALL BE PLACED ALONG 2" FROM EDGE OF PAVEMENT WHERE AGGREGATE OR HMA SHOULDER IS PRESENT.
3. IN ADDITION TO FIELD REVIEW AND AERIAL DATA, PLAN DIMENSIONS AND DETAILS RELATIVE TO THE EXISTING FACILITIES HAVE BEEN TAKEN FROM EXISTING PLANS AND ARE SUBJECT TO CONSTRUCTION VARIATIONS. IT SHALL BE THE CONTRACTOR'S RESPONSIBILITY TO VERIFY SUCH DIMENSIONS AND DETAILS IN THE FIELD. SUCH VARIATIONS SHALL NOT BE A CAUSE FOR ADDITIONAL COMPENSATION DUE TO A CHANGE IN THE SCOPE OF THE WORK. HOWEVER, THE CONTRACTOR WILL BE PAID FOR THE QUANTITY ACTUALLY FURNISHED AT THE BID PRICE FOR THE WORK.



FILE NAME =	USER NAME = #USER#	DESIGNED - SEW	REVISED -	STATE OF ILLINOIS DEPARTMENT OF TRANSPORTATION	PAVEMENT MARKING PLANS US ROUTE 12, 20, 45 SB (LA GRANGE RD) - S.N. 016-2407			F.A.P. RTE.	SECTION	COUNTY	TOTAL SHEETS	SHEET NO.
#FILE#		DRAWN - SEW	REVISED -		SCALE: 1"=50'	SHEET NO. 16 OF 54 SHEETS	STA. 31+99.36 TO STA. 69+00.70	330	462 X-B-I	COOK	54	16
		CHECKED - FML	REVISED -					CONTRACT NO. 60J37				
		DATE - 01/2010	REVISED -					ILLINOIS FED. AID PROJECT				