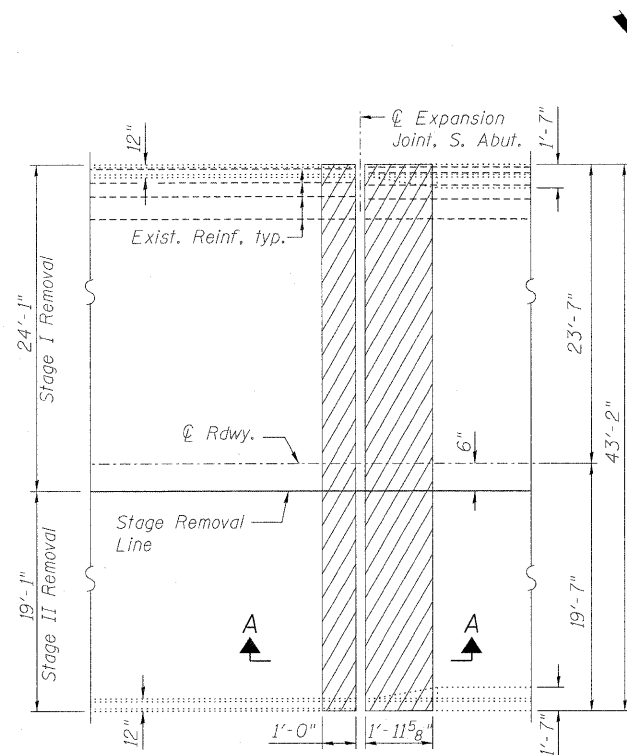
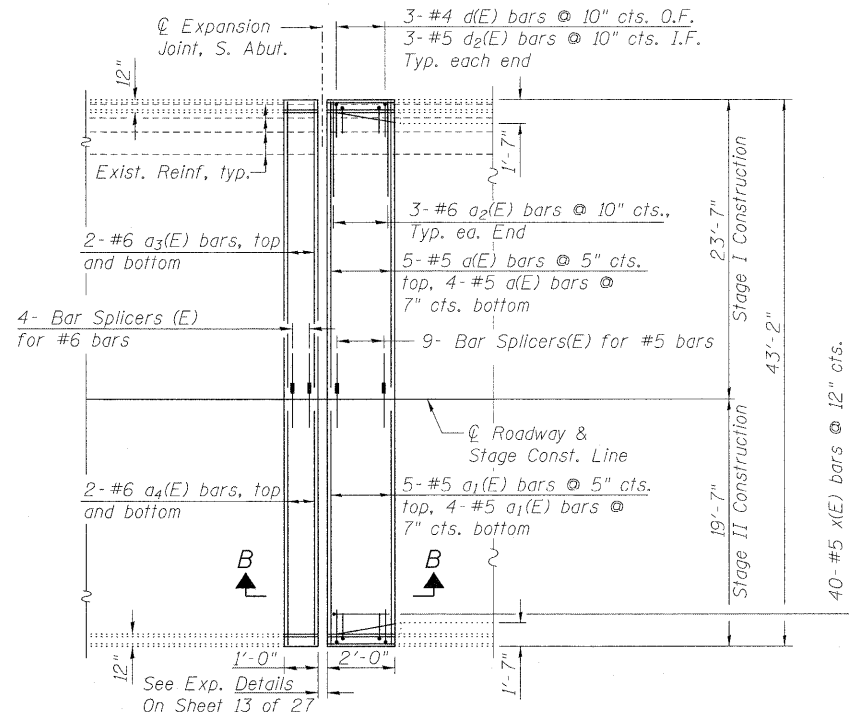


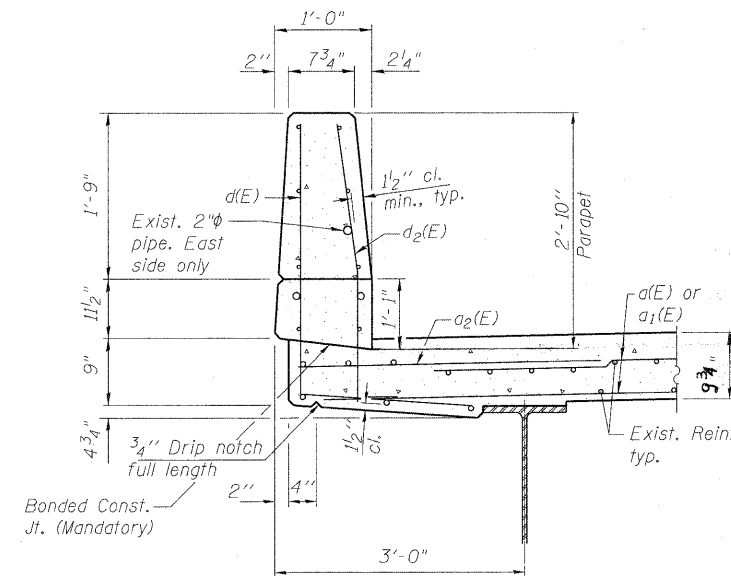
STATE OF ILLINOIS
DEPARTMENT OF TRANSPORTATION



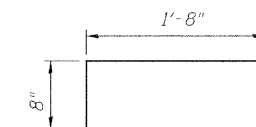
PARTIAL PLAN SHOWING CONCRETE
REMOVAL AT SOUTH ABUTMENT



PARTIAL PLAN SHOWING CONCRETE
REPLACEMENT AT SOUTH ABUTMENT



SECTION THRU PARAPET



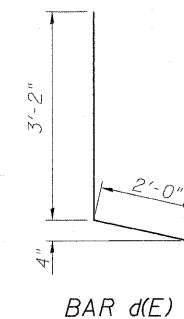
BAR x(E)

LEGEND

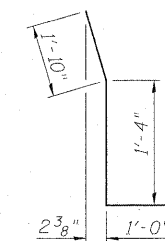
O.F. = Outside Face
I.F. = Inside Face

BILL OF MATERIAL

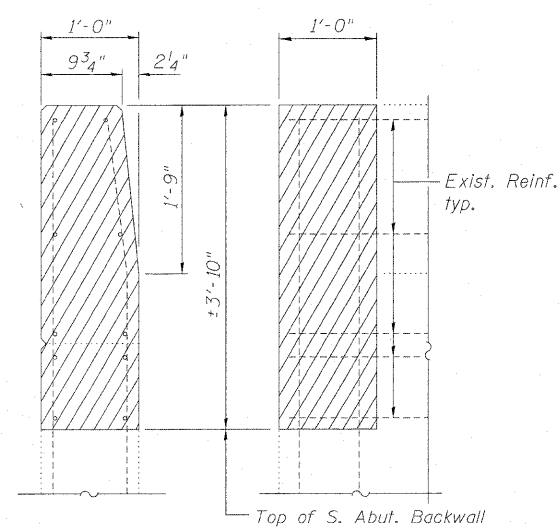
Bar	No.	Size	Length	Shape
a(E)	9	#5	22'-11"	—
a1(E)	9	#5	18'-11"	—
a2(E)	6	#6	6'-0"	—
a3(E)	4	#6	23'-3"	—
a4(E)	4	#6	19'-3"	—
d(E)	6	#4	5'-2"	—
d2(E)	6	#5	4'-2"	—
x(E)	40	#5	2'-4"	—
Concrete Removal			Cu. Yd.	6.1
Concrete Superstructure			Cu. Yd.	7.2
Reinforcement Bars, Epoxy Coated			Pound	850



BAR d(E)

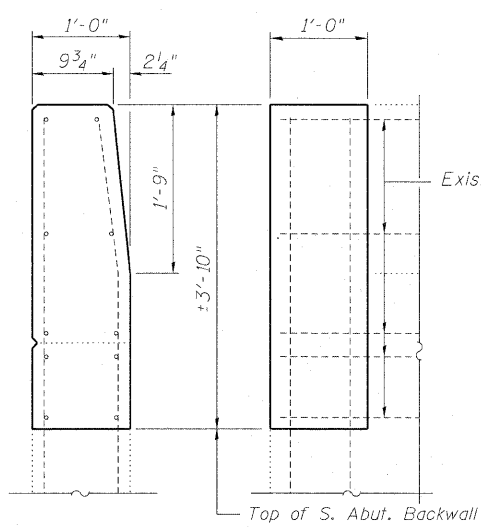


BAR d2(E)



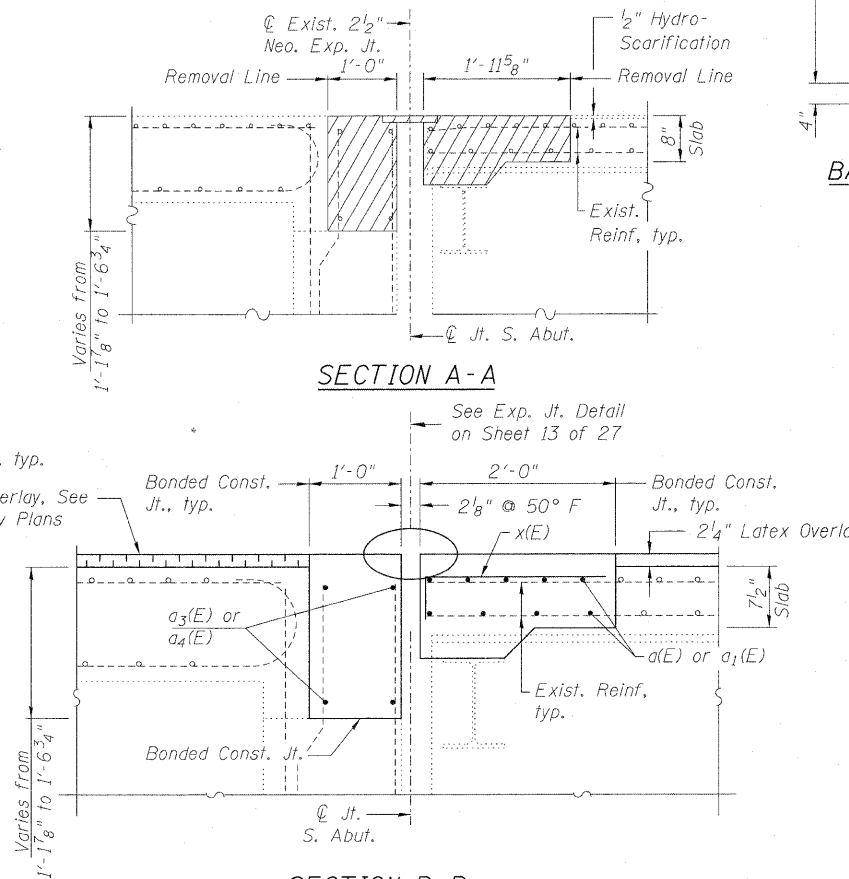
END VIEW

ELEVATION



END VIEW

ELEVATION



SECTION A-A

SECTION B-B

NOTES

Hatched areas indicate concrete sections to be removed and replaced. Perimeters of concrete removal areas shall be saw cut 3/4" prior to removal of the concrete. Existing reinforcement shall be cleaned, straightened (if required) and incorporated into the new construction. Cost included with Concrete Removal. Removal of the existing joint system is included with Concrete Removal.

JOINT DETAILS, SOUTH ABUTMENT
STRUCTURE NO. 016-2407

WINGWALL CONCRETE REMOVAL DETAIL WINGWALL CONCRETE REPLACEMENT DETAIL

<p>LIN ENGINEERING LTD. Consulting Engineers Chatham, Illinois</p>	SHEET NO. 11	F.A.P. RTE. 330	SECTION 462 X-B-I	COUNTY COOK	TOTAL SHEETS 54	SHEET NO. 31
	27 SHEETS	CONTRACT NO. 60J37			ILLINOIS FED. AID PROJECT	