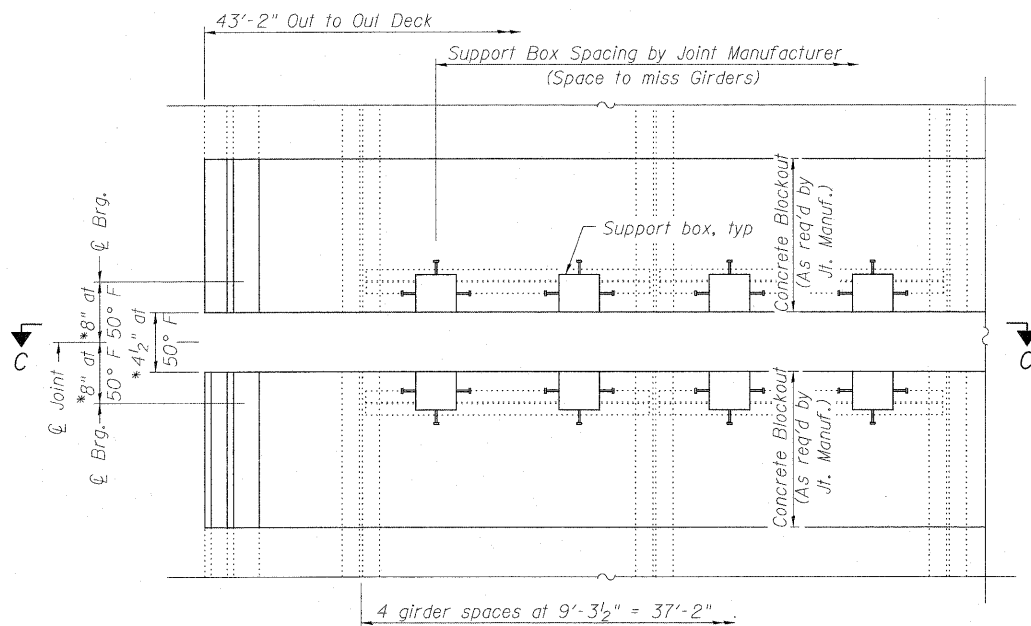
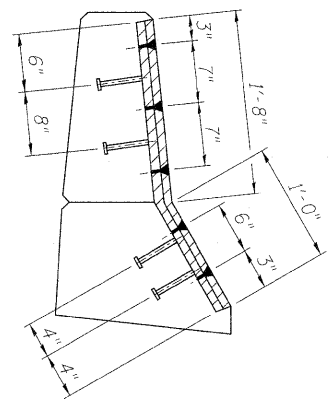


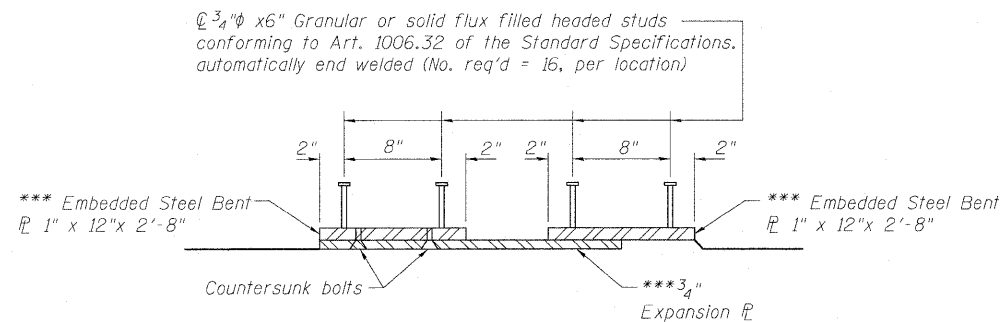
STATE OF ILLINOIS
DEPARTMENT OF TRANSPORTATION



PARTIAL PLAN AT PIER 4



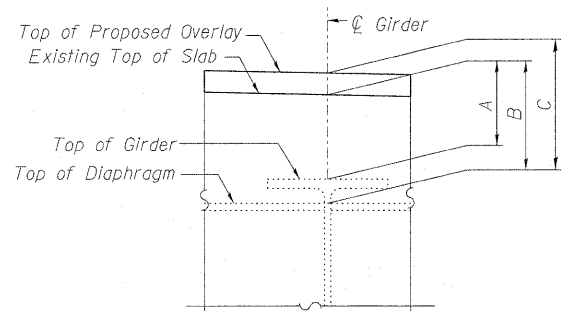
SECTION D-D



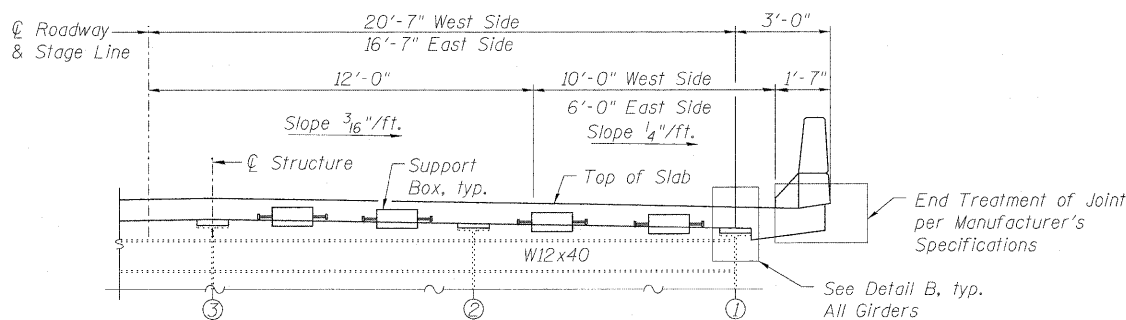
SECTION E-E

*** Expansion Plate and Embedded Plates shall be galvanized According to AASHTO M111. Cost included with Modular Expansion Joint 6"

* Adjusted as required by Joint Manufacturer



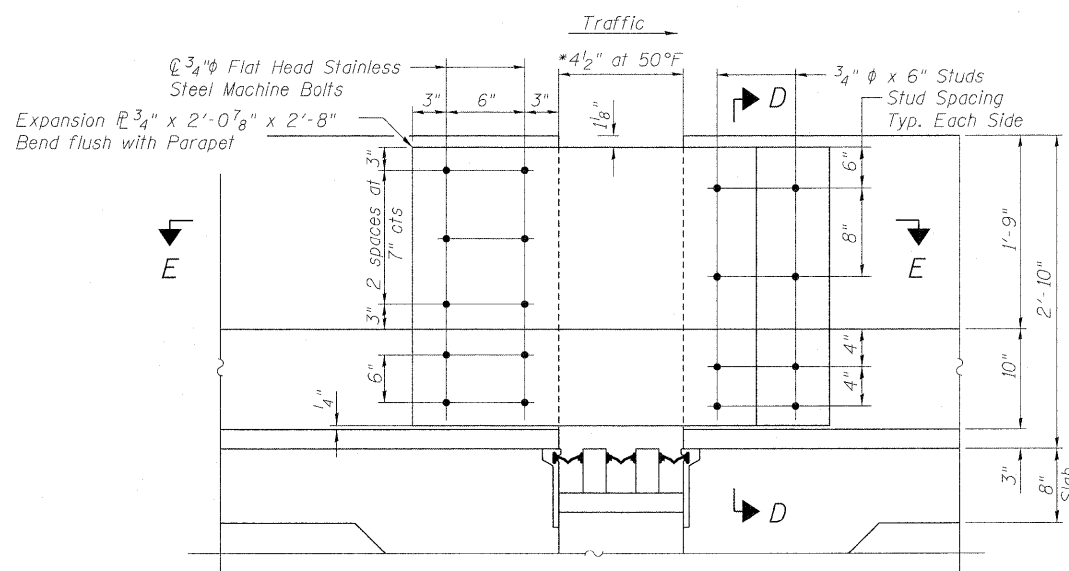
DETAIL B



SECTION C-C
(Looking South)

A, B & C DIMENSIONS
(from 2002 Existing Plans)

Location	Beam Number	At ϕ Bearing		
		Dim "A"	Dim "B"	Dim "C"
Pier #4 South ϕ Bearing	1	8 7/8"	12 5/8"	14 3/8"
	2	8 7/8"	14 7/8"	16 5/8"
	3	8 7/8"	16 5/8"	18 3/8"
	4	8 7/8"	15 5/8"	17 3/8"
	5	8 7/8"	13 5/8"	15 3/8"
Pier #4 North ϕ Bearing	1	8 1/2"	12 1/4"	14"
	2	8 1/2"	14 1/2"	16 1/4"
	3	8 1/2"	16 1/4"	18"
	4	8 1/2"	15 1/4"	17"
	5	8 1/2"	13 1/4"	15"



ELEVATION - PARAPET SLIDING
PLATE AT PIER 4

NOTES

- Modular Expansion Joint shall be designed according to the latest ASTM Specifications for HS20 Loading with 30% impact and for a minimum movement of ± 3 " (total of 6").
- The Modular Expansion Joint shall be either Steel flex system by D.S. Brown Company, WABO system, by Watson Bowman Acme Corp., or the LG system, by TechStar Inc.
- Joint shall be fabricated and installed according to the manufacturer's recommendations and as approved by the Engineer.
- Joint shall be fabricated to conform to the Roadway Profile and Cross-Slopes.
- Cost of all hardware and installation of Steel Bearing Shim Plates and additional reinforcement required to anchor the joint to the slab shall be included with "Modular Expansion Joint 6".
- The inorganic zinc rich primer/acrylic/acrylic paint system shall be used for shop and field painting of new structural steel except no top coat required in non-exposed areas. The color of the acrylic finish coat shall be Gray, Munsell No. 5B 7/1. See special Provisions "Cleaning and Painting New Metal Structures."

JOINT DETAILS, PIER 4 (2 of 2)
STRUCTURE NO. 016-2407

 LIN ENGINEERING LTD. Consulting Engineers Chatham, Illinois <small>Designed By: TBP Checked By: MTH Drawn By: TBP</small> <small>Date: 1/22/02 File: 016-2407.dgn</small>	SHEET NO. 15	F.A.P. RTE. 330	SECTION 462 X-B-I	COUNTY COOK	TOTAL SHEETS 54	SHEET NO. 35
	27 SHEETS	CONTRACT NO. 60J37			ILLINOIS FED. AID PROJECT	