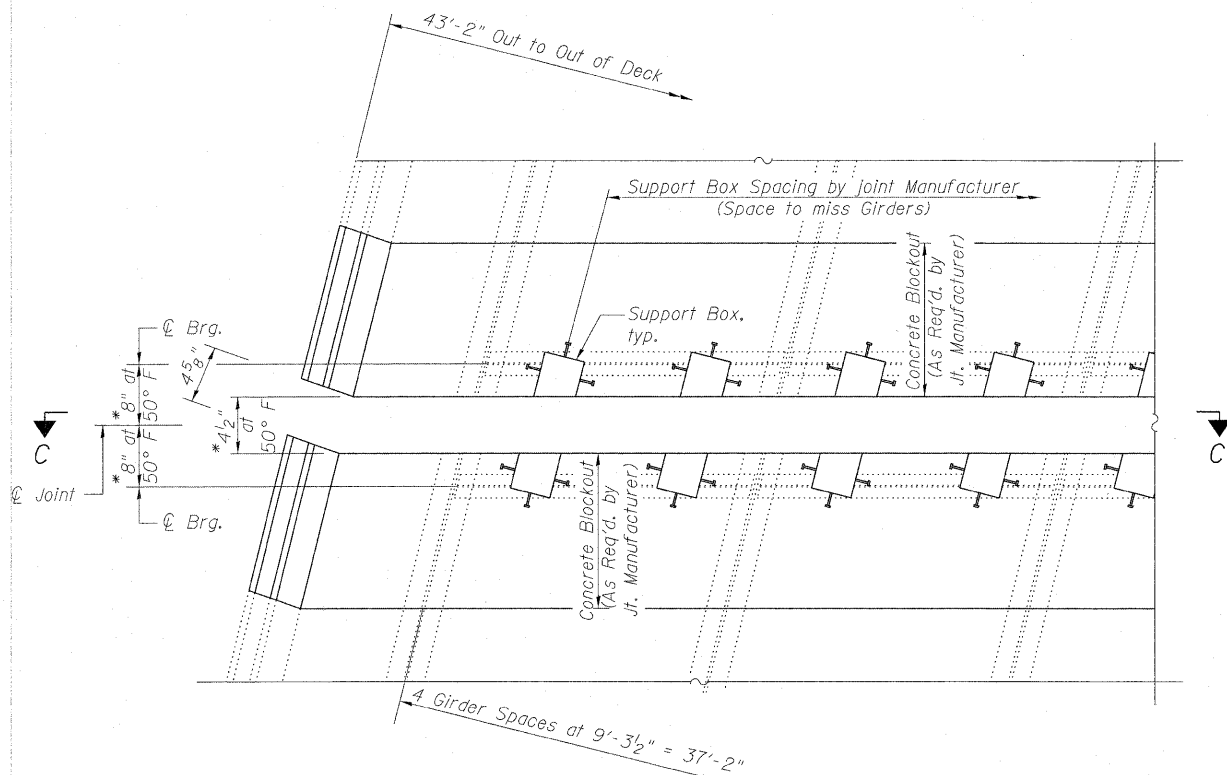


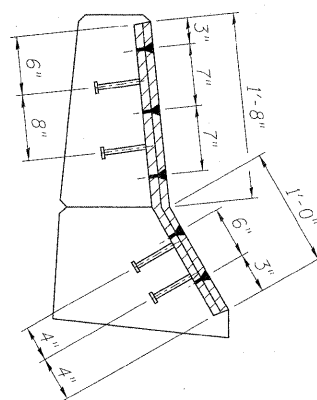
STATE OF ILLINOIS
DEPARTMENT OF TRANSPORTATION

A, B & C DIMENSIONS

(From 2002 Existing Plans)



PARTIAL PLAN
AT PIERS 8, 12, 16 & 20



SECTION D-D

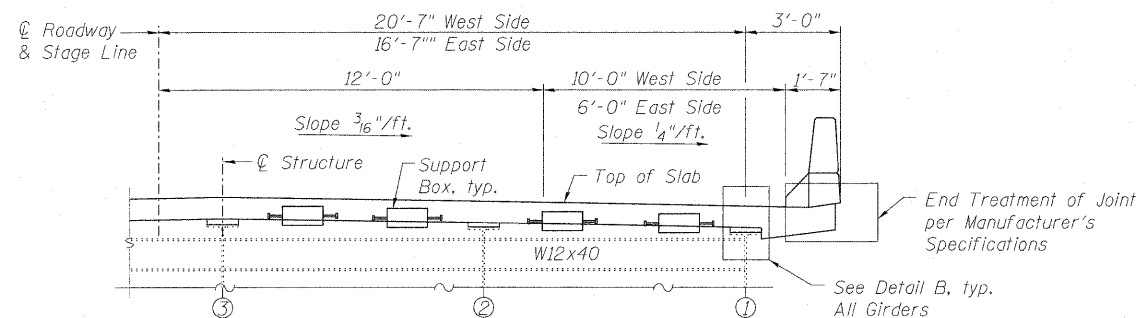
* Adjusted as required by Joint Manufacturer

Location	Beam Number	At ϕ Bearing		
		Dim "A"	Dim "B"	Dim "C"
Pier #8 South ϕ Bearing	1	8 1/2"	12 1/4"	14"
	2	8 1/2"	14 1/8"	16 5/8"
	3	8 1/2"	17"	18 3/4"
	4	8 1/2"	16 3/8"	18 1/8"
	5	8 1/2"	14 5/8"	16 3/8"
Pier #8 North ϕ Bearing	1	8 1/2"	12 1/4"	14"
	2	8 1/2"	14 1/8"	16 5/8"
	3	8 1/2"	16 7/8"	18 5/8"
	4	8 1/2"	16 1/4"	18"
	5	8 1/2"	14 5/8"	16 3/8"

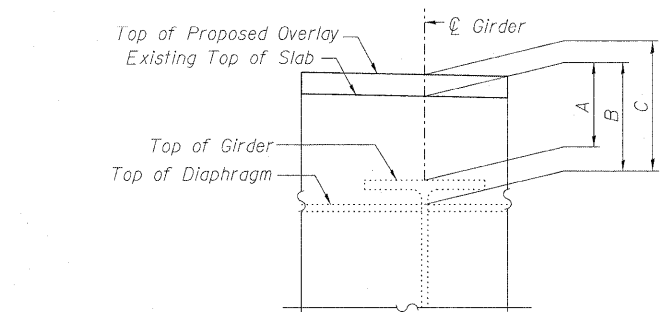
Location	Beam Number	At ϕ Bearing		
		Dim "A"	Dim "B"	Dim "C"
Pier #12 South ϕ Bearing	1	8 1/2"	12 1/4"	14"
	2	8 1/2"	14 1/2"	16 1/4"
	3	8 1/2"	16 3/8"	18 9/8"
	4	8 1/2"	15 1/2"	17 1/4"
	5	8 1/2"	13 1/2"	15 1/4"
Pier #12 North ϕ Bearing	1	8 1/2"	12 1/4"	14"
	2	8 1/2"	14 5/8"	16 3/8"
	3	8 1/2"	16 2"	18 1/4"
	4	8 1/2"	15 1/2"	17 1/4"
	5	8 1/2"	13 5/8"	15 3/8"

Location	Beam Number	At ϕ Bearing		
		Dim "A"	Dim "B"	Dim "C"
Pier #16 South ϕ Bearing	1	8 1/2"	12 1/4"	14"
	2	8 1/2"	14 1/2"	16 1/4"
	3	8 1/2"	16 1/8"	18"
	4	8 1/2"	15 1/4"	17"
	5	8 1/2"	13 1/4"	15"
Pier #16 North ϕ Bearing	1	8 1/2"	12 1/4"	14"
	2	8 1/2"	14 1/2"	16 1/4"
	3	8 1/2"	16 1/4"	18"
	4	8 1/2"	15 1/4"	17"
	5	8 1/2"	13 1/4"	15"

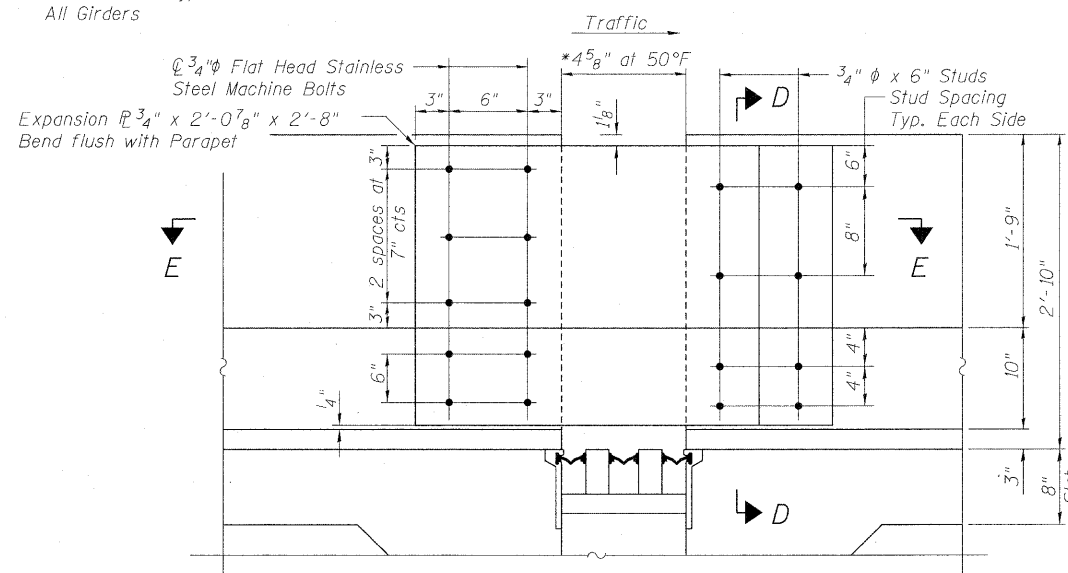
Location	Beam Number	At ϕ Bearing		
		Dim "A"	Dim "B"	Dim "C"
Pier #20 South ϕ Bearing	1	8 1/2"	12 1/4"	14"
	2	8 1/2"	14 1/2"	16 1/4"
	3	8 1/2"	16 1/8"	17 7/8"
	4	8 1/2"	15"	16 3/4"
	5	8 1/2"	13"	14 3/4"
Pier #20 North ϕ Bearing	1	8 3/4"	12 1/2"	14 1/4"
	2	8 3/4"	14 3/4"	16 1/2"
	3	8 3/4"	16 3/8"	18 9/8"
	4	8 3/4"	15 3/8"	17 9/8"
	5	8 3/4"	13 1/4"	15"



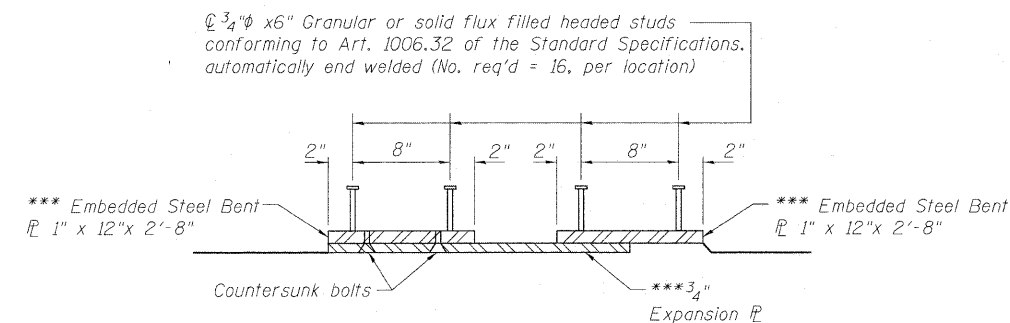
SECTION C-C
(Dimensions at rights angles to ϕ roadway)



DETAIL B



ELEVATION - PARAPET SLIDING PLATE AT PIERS 8, 12, 16 & 20



SECTION E-E

NOTES

Modular Expansion Joint shall be designed according to the latest ASTM Specifications for HS20 Loading with 30% impact and for a minimum movement of $\pm 3"$ (total of 6").
The Modular Expansion Joint shall be either Steel flex system by D.S. Brown Company, WABO system, by Watson Bowman Acme Corp., or the LG system, by TechStar Inc.
Joint shall be fabricated and installed according to the manufacturer's recommendations and as approved by the Engineer.
Joint shall be fabricated to conform to the Roadway Profile and Cross-Slopes.
Cost of all hardware and installation of Steel Bearing Shim Plates and additional reinforcement required to anchor the joint to the slab shall be included with "Modular Expansion Joint 6".
The inorganic zinc rich primer/acrylic/acrylic paint system shall be used for shop and field painting of new structural steel except no top coat required in non-exposed areas. The color of the acrylic finish coat shall be Gray, Munsell No. 5B 7/1. See special Provisions "Cleaning and Painting New Metal Structures."

JOINT DETAILS, PIERS 8, 12, 16 & 20 (2 of 2) STRUCTURE NO. 016-2407

	SHEET NO. 17	F.A.P. RTE. 330	SECTION 462 X-B-1	COUNTY COOK	TOTAL SHEETS 54	SHEET NO. 37
	27 SHEETS	CONTRACT NO. 60J37		ILLINOIS FED. AID PROJECT		