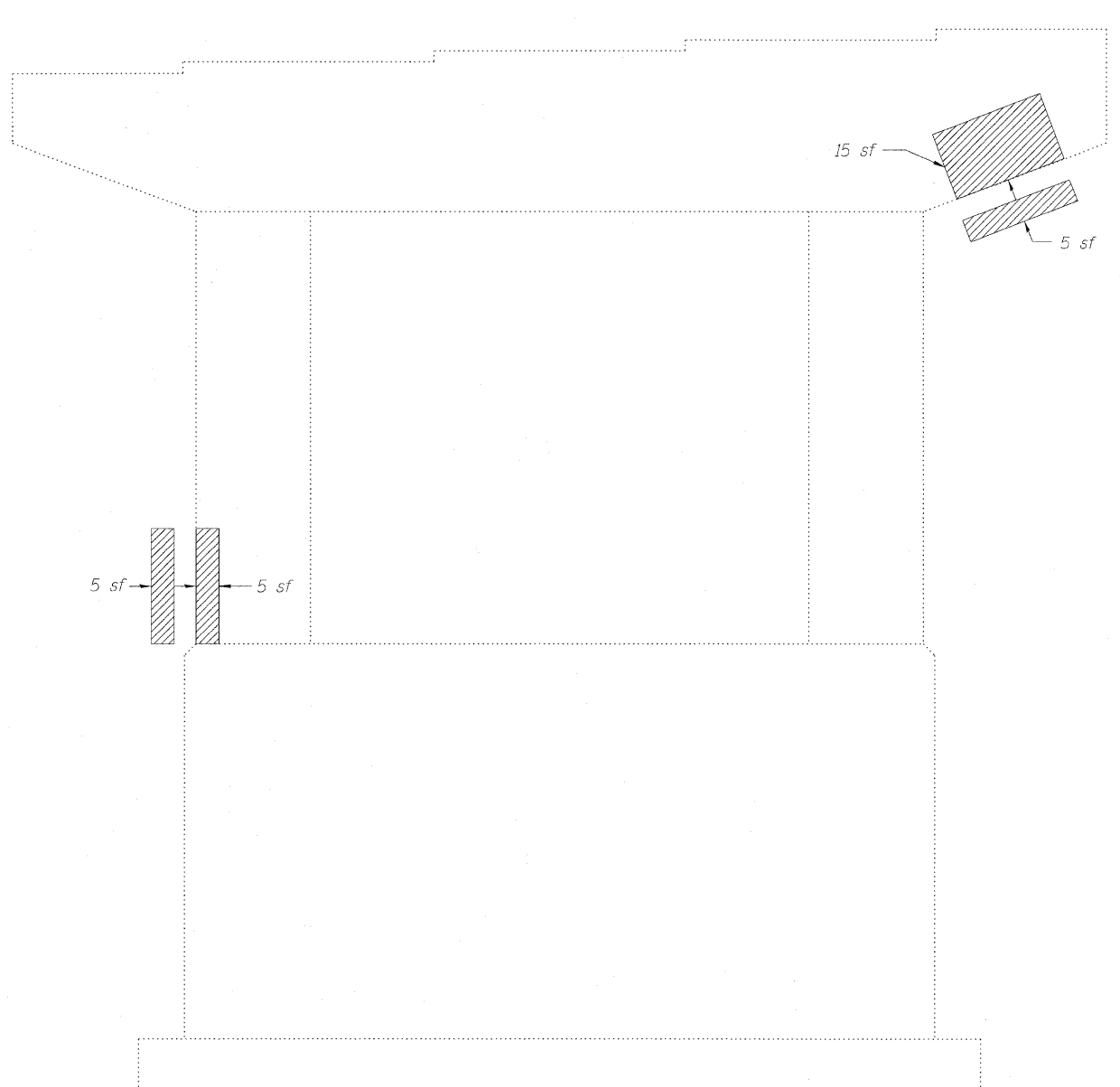
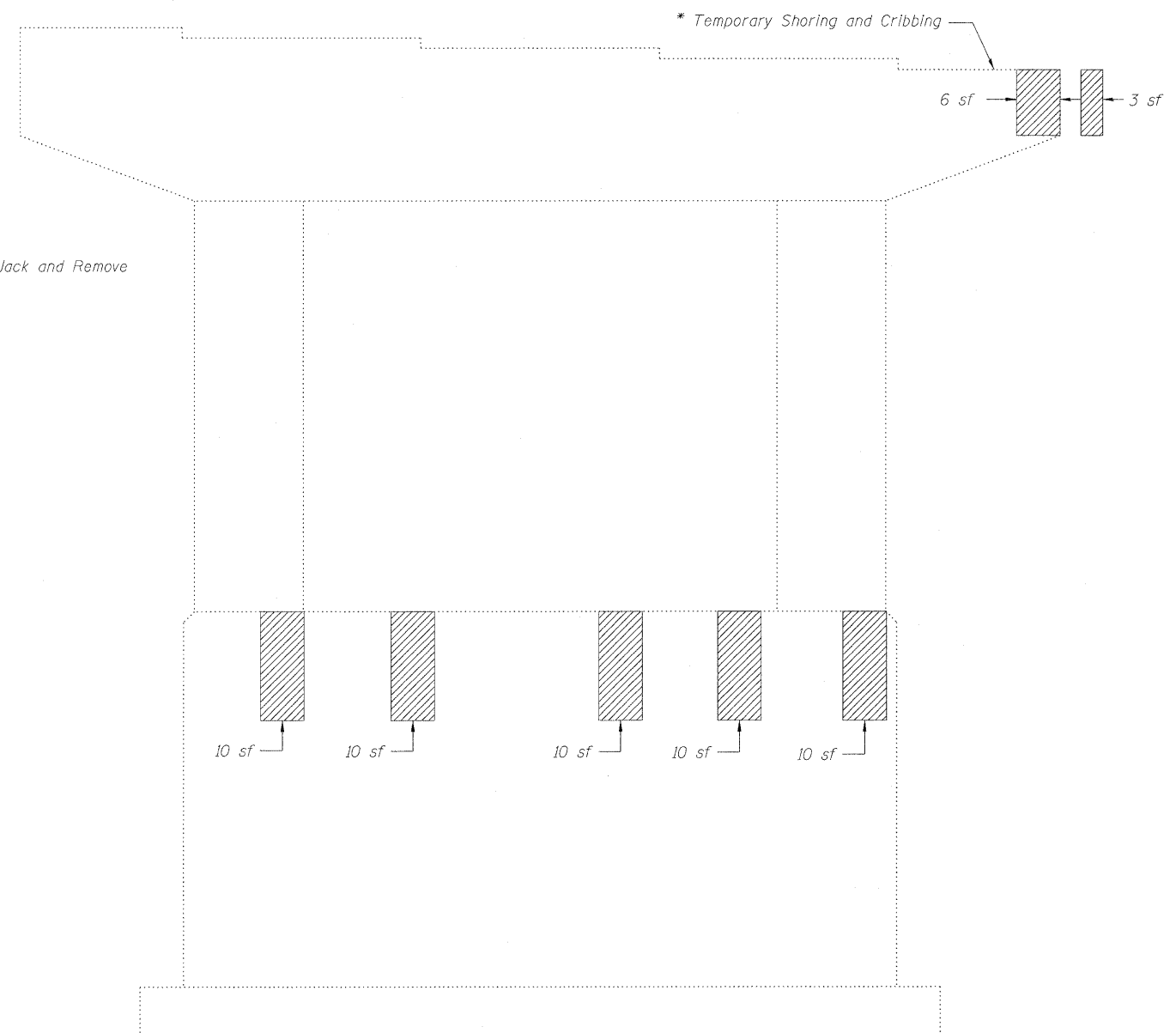


STATE OF ILLINOIS  
DEPARTMENT OF TRANSPORTATION



**PIER 27**  
(North Face)



**PIER 27**  
(South Face)

\* Cost Included with Jack and Remove Existing Bearings

**Notes:**  
Temporary Shoring and Cribbing required to complete bearing replacement and/or Structural Repair of Concrete (Depth Equal to or Less Than 5 inches) shall not be paid for separately but shall be included in the cost of Jack and Remove Existing Bearings. When doing the pier repair and bearing replacement at the same time, the structure shall not be jacked up from the pier, the weight must be taken off the pier, in the area of the pier repair. Concrete must be cured to minimum strength for the repair before bearing can be replaced and weight put back on the pier, according to special provisions.  
See Sheet 22 of 27 for Reactions.  
Repair of the existing piers shall include but may not be limited to the areas shown. The actual area to be repaired will be determined by the Engineer at the time of construction.

**BILL OF MATERIAL**

Item	Unit	Total
Structural Repair of Concrete (Depth equal to or less than 5 in.)	Sq. Ft.	89

**LEGEND**

Structural Repair of Concrete (Depth equal to or less than 5")  
sf Square Feet

**PIER REPAIR (4 of 4)**  
**STRUCTURE NO. 016-2407**

<b>LIN ENGINEERING, LTD.</b> Consulting Engineers Chatham, Illinois	SHEET NO. 26	F.A.P. RTE.	SECTION	COUNTY	TOTAL SHEETS	SHEET NO.
	27 SHEETS	330	462 X-B-I	COOK	54	46
					CONTRACT NO. 60J37	
					ILLINOIS FED. AID PROJECT	