


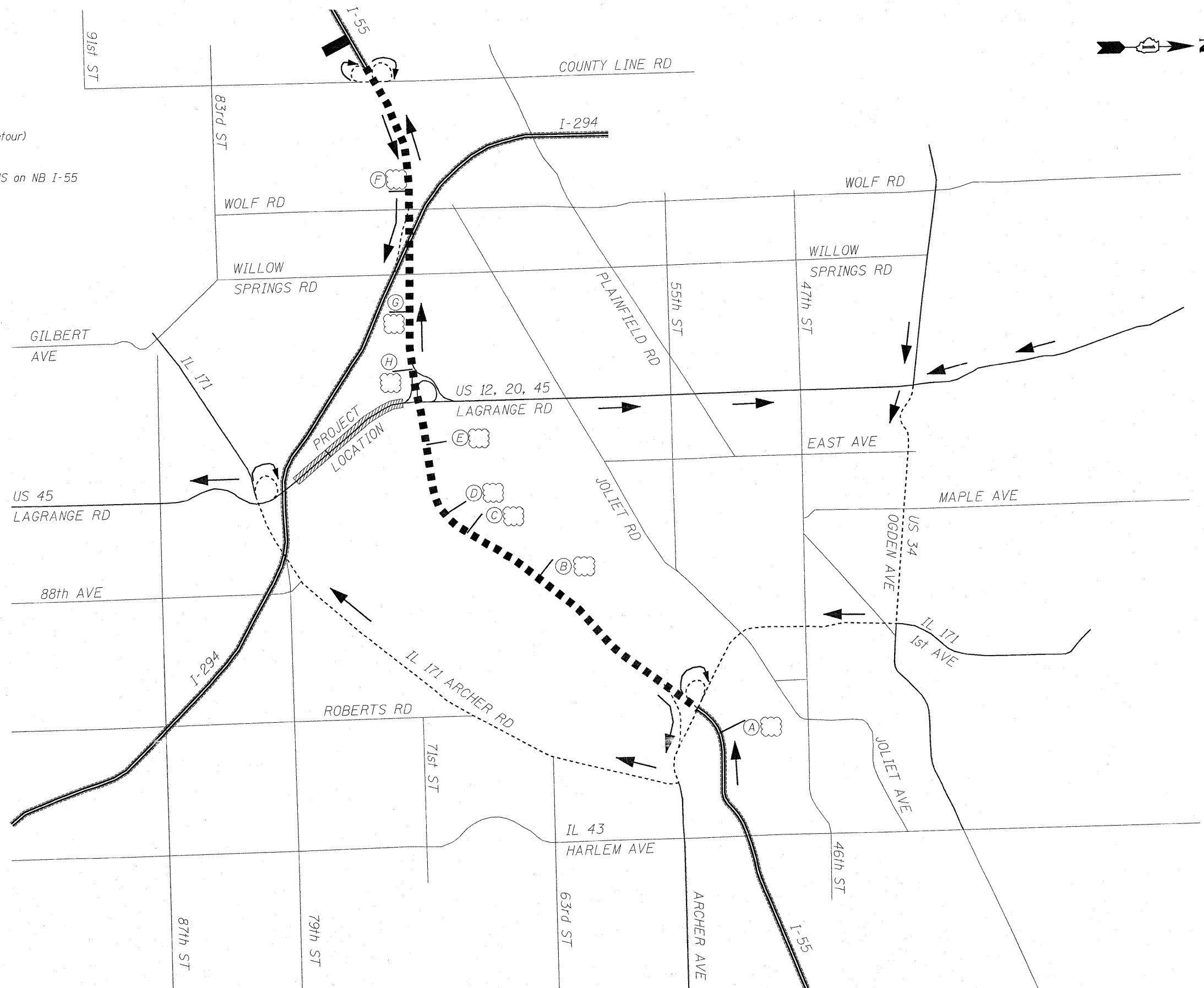


LEGEND

-  Interstate
-  Interstate (Detour)
-  Main Local Roads
-  Main Local Roads (Detour)
-  Collector Roads
-  Existing overhead DMS on NB I-55
-  County Line Road



Rev. Sheet 4-15-10

LOCO, INC.
CONSULTING ENGINEERS
1560 WALL ST, SUITE 222
NAPERVILLE, ILLINOIS 60563 PH: 630/577-9100

DESIGNED - MJY	REVISED - 4/13/2010
DRAWN - SLV	REVISED -
CHECKED - MJY, DC	REVISED -
DATE - 01/29/2010	REVISED -

**STATE OF ILLINOIS
DEPARTMENT OF TRANSPORTATION**

DETOUR PLAN - OVERVIEW
US 12, 20, 45 SB (LA GRANGE RD) OVER CN RR AND CANALS

F.A.P. RTE.	SECTION	COUNTY	TOTAL SHEETS	SHEET NO.
330	462 X-B-1-1	COOK	41	11
D-91-228-10		CONTRACT NO. 60J38		
FED. ROAD DIST. NO.		ILLINOIS FED. AID PROJECT		

SCALE: NONE SHEET NO. 11 OF 41 SHEETS STA. 16+97.50 TO STA. 31+99.36