

SUMMARY OF QUANTITIES			80% FED. 20% STATE			SUMMARY OF QUANTITIES			80% FED. 20% STATE		
CODE NO.	ITEM	UNIT	URBAN TOTAL	ROADWAY J000-2A	BRIDGE X321-2A	CODE NO.	ITEM	UNIT	URBAN TOTAL	ROADWAY J000-2A	BRIDGE X321-2A
40600200	BITUMINOUS MATERIALS (PRIME COAT)	TON	1	1		67000400	ENGINEER'S FIELD OFFICE, TYPE A	CAL MO	8	8	
40600635	LEVELING BINDER (MACHINE METHOD), N70	TON	22	22		67100100	MOBILIZATION	L SUM	1	1	
40603595	POLYMERIZED HOT-MIX ASPHALT SURFACE COURSE, MIX "F", N90	TON	59	59		70101800	TRAFFIC CONTROL AND PROTECTION, (SPECIAL)	L SUM	1	1	
44000155	HOT-MIX ASPHALT SURFACE REMOVAL, 1 1/2"	SQ YD	268	268		70102550	TRAFFIC CONTROL AND PROTECTION FOR TEMPORARY DETOUR	EACH	1	1	
44000198	HOT-MIX ASPHALT SURFACE REMOVAL, VARIABLE DEPTH	SQ YD	332	332		70103815	TRAFFIC CONTROL SURVEILLANCE	CAL DA	40	40	
50102400	CONCRETE REMOVAL	CU YD	36.5		36.5	70106800	CHANGEABLE MESSAGE SIGN	CAL MO	12	12	
50157300	PROTECTIVE SHIELD	SQ YD	2152		2152	70400100	TEMPORARY CONCRETE BARRIER	FOOT	1732	1732	
50300255	CONCRETE SUPERSTRUCTURE	CU YD	41.8		41.8	70400200	RELOCATE TEMPORARY CONCRETE BARRIER	FOOT	1732	1732	
50300260	BRIDGE DECK GROOVING	SQ YD	5967		5967	* 78008210	POLYUREA PAVEMENT MARKING TYPE 1 - LINE 4"	FOOT	4846	1082	3764
50300300	PROTECTIVE COAT	SQ YD	5985		5985	* 78100100	RAISED REFLECTIVE PAVEMENT MARKER	EACH	32	32	
50500405	FURNISHING AND ERECTING STRUCTURAL STEEL	POUND	7833		7833	* 78100105	RAISED REFLECTIVE PAVEMENT MARKER (BRIDGE)	EACH	68		68
50500715	JACK AND REMOVE EXISTING BEARINGS	EACH	35		35	* 78200530	BARRIER WALL MARKERS, TYPE C	EACH	71	71	
50800205	REINFORCEMENT BARS, EPOXY COATED	POUND	5940		5940	78300100	PAVEMENT MARKING REMOVAL	SQ FT	1616	1616	
50800515	BAR SPLICERS	EACH	91		91	78300200	RAISED REFLECTIVE PAVEMENT MARKER-REMOVAL	EACH	100	32	68
52000110	PREFORMED JOINT STRIP SEAL	FOOT	168		168	X0322185	BRIDGE DECK LATEX CONCRETE OVERLAY, 2 1/4 INCHES	SQ YD	5883		5883
52100010	ELASTOMERIC BEARING ASSEMBLY, TYPE I	EACH	10		10	X0322256	TEMPORARY INFORMATION SIGNING	SQ FT	206	206	△
52100020	ELASTOMERIC BEARING ASSEMBLY, TYPE II	EACH	20		20	X0325305	STRUCTURAL REPAIR OF CONCRETE (DEPTH EQUAL TO OR LESS THAN 5 INCHES)	SQ FT	213		213
52100030	ELASTOMERIC BEARING ASSEMBLY, TYPE III	EACH	5		5	X0325775	WET REFLECTIVE TEMPORARY TAPE, TYPE III, 4 INCH	FOOT	7731	7731	
52100520	ANCHOR BOLTS, 1"	EACH	90		90	Z0006204	BRIDGE DECK HYDRO-SCARIFICATION 1/2"	SQ YD	5883		5883

* SPECIALTY ITEMS

LONCO, INC.
CONSULTING ENGINEERS
1960 WALL ST, SUITE 222
NAPERVILLE, ILLINOIS 60563 PH: (630) 577-9100

DESIGNED - MJY
DRAWN - ST, TSC
CHECKED - MJY, DC
DATE - 01/29/2010

REVISED -
REVISED -
REVISED -


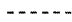


**STATE OF ILLINOIS
DEPARTMENT OF TRANSPORTATION**

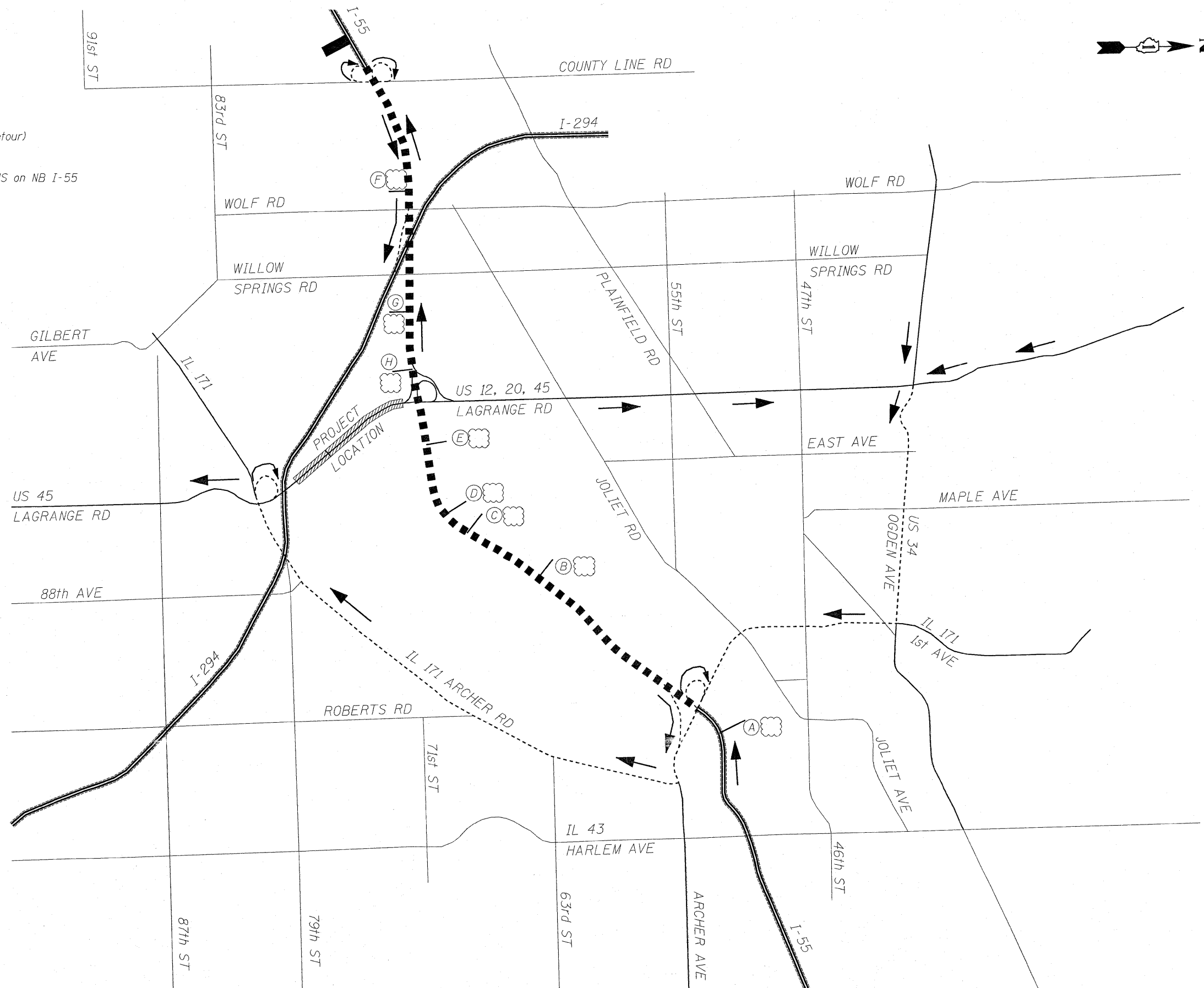
**SUMMARY OF QUANTITIES
US 12, 20, 45 SB (LA GRANGE RD) OVER CN RR AND CANALS**

SCALE: NONE SHEET NO. 3 OF 41 SHEETS STA. 16+97.50 TO STA. 31+99.36

Rev. 4-15-10
F.A.P. SECTION COUNTY TOTAL SHEETS SHEET NO.
330 462 X-B-1-1 COOK 41 3
D-91-228-10 CONTRACT NO. 60J38
FED. ROAD DIST. NO. ILLINOIS FED. AID PROJECT

LEGEND

-  Interstate
-  Interstate (Detour)
-  Main Local Roads
-  Main Local Roads (Detour)
-  Collector Roads
-  Existing overhead DMS on NB I-55
-  County Line Road



Rev. Sheet 4-15-10

LOCO, INC.
CONSULTING ENGINEERS
1560 WALL ST, SUITE 222
NAPERVILLE, ILLINOIS 60563 PH: 630/577-9100

DESIGNED - MJY	REVISED - 4/13/2010
DRAWN - SLV	REVISED -
CHECKED - MJY, DC	REVISED -
DATE - 01/29/2010	REVISED -

**STATE OF ILLINOIS
DEPARTMENT OF TRANSPORTATION**

DETOUR PLAN - OVERVIEW
US 12, 20, 45 SB (LA GRANGE RD) OVER CN RR AND CANALS

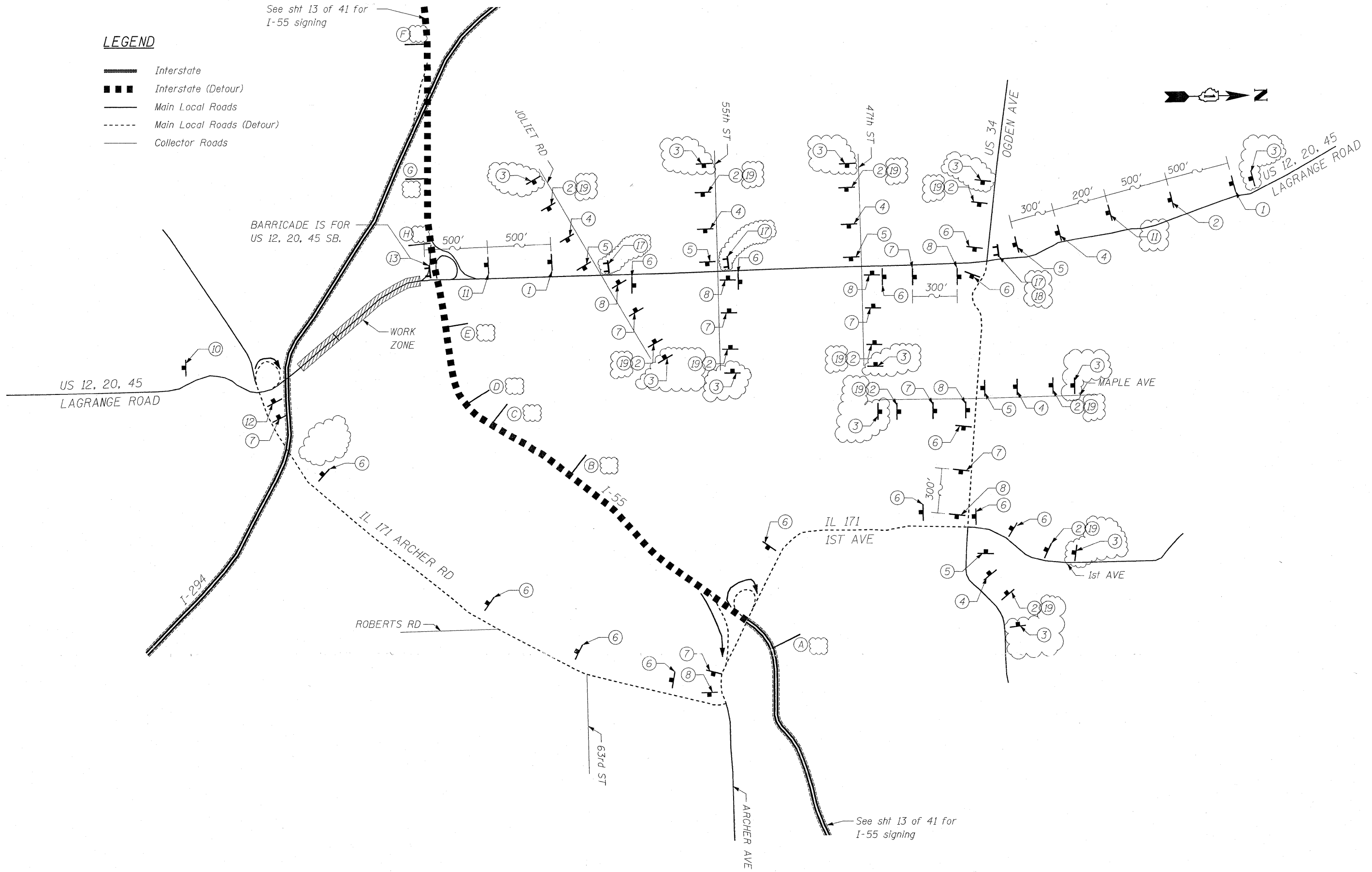
F.A.P. RTE.	SECTION	COUNTY	TOTAL SHEETS	SHEET NO.
330	462 X-B-I-1	COOK	41	11
D-91-228-10		CONTRACT NO. 60J38		
FED. ROAD DIST. NO.		ILLINOIS FED. AID PROJECT		

SCALE: NONE SHEET NO. 11 OF 41 SHEETS STA. 16+97.50 TO STA. 31+99.36

LEGEND

- Interstate
- ■ ■ Interstate (Detour)
- Main Local Roads
- - - Main Local Roads (Detour)
- Collector Roads

See sht 13 of 41 for I-55 signing



BARRICADE IS FOR US 12, 20, 45 SB.

WORK ZONE

US 12, 20, 45
LAGRANGE ROAD

IL 171 ARCHER RD

ROBERTS RD

63rd ST

ARCHER AVE

IL 171
1ST AVE

1st AVE

See sht 13 of 41 for I-55 signing

LOCAL ROADS DETOUR FOR LAGRANGE SB

LOCO, INC.
CONSULTING ENGINEERS
1560 WALL ST, SUITE 222
NAPERVILLE, ILLINOIS 60563 PH: 630/577-9100

DESIGNED - MJY	REVISIONS
DRAWN - SLV	REVISED - 4/13/2010
CHECKED - MJY, DC	REVISED -
DATE - 01/29/2010	REVISED -

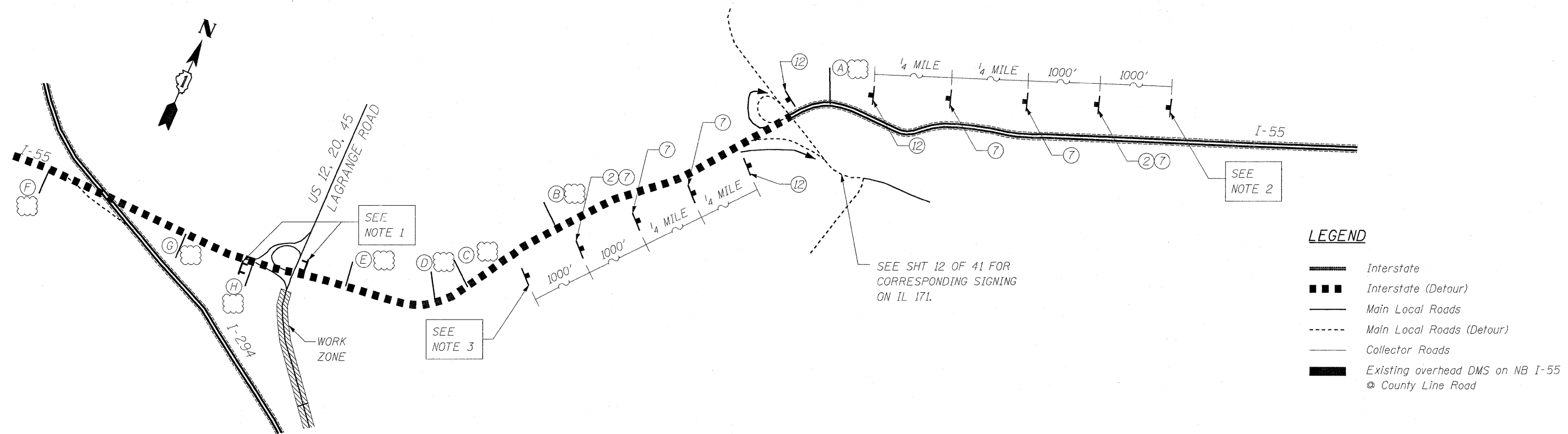
**STATE OF ILLINOIS
DEPARTMENT OF TRANSPORTATION**

**DETOUR PLAN - LOCAL ROADS
US 12, 20, 45 SB (LA GRANGE RD) OVER CN RR AND CANALS**

SCALE: NONE SHEET NO. 12 OF 41 SHEETS STA. 16+97.50 TO STA. 31+99.36

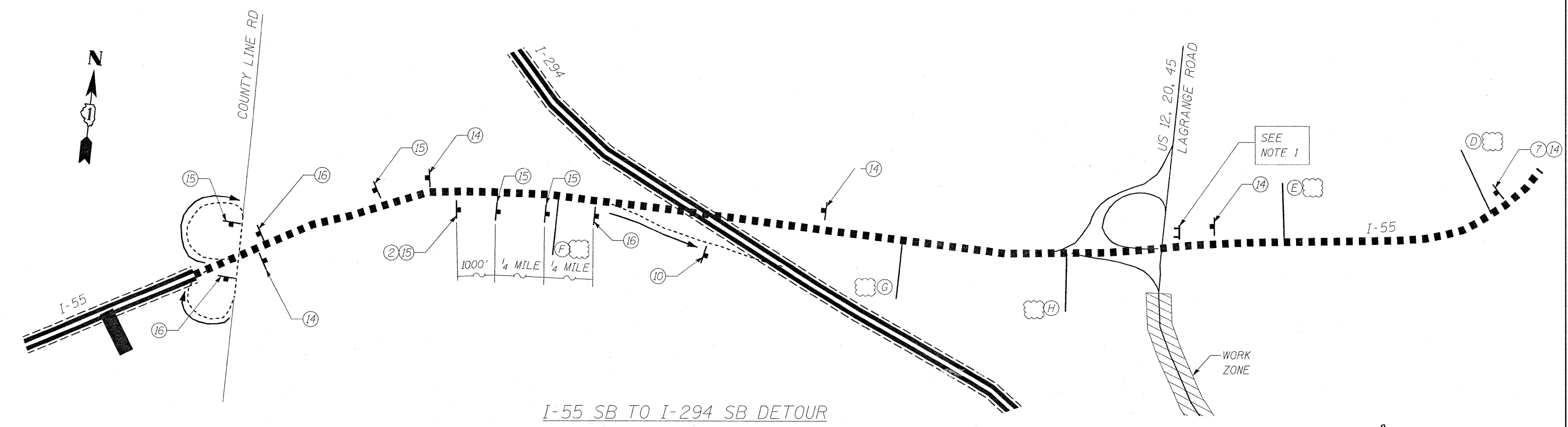
▲ Rev. Sheet 4-15-10

F.A.P. RTE.	SECTION	COUNTY	TOTAL SHEETS	SHEET NO.
330	462 X-8-1-1	COOK	41	12
D-91-228-10			CONTRACT NO. 60J38	
FED. ROAD DIST. NO. ILLINOIS FED. AID PROJECT				



I-55 NB & SB TO LAGRANGE RD SB DETOUR

- NOTE 1: EXIT RAMP CLOSURE TO FOLLOW DISTRICT DETAIL FOR FREEWAY ENTRANCE AND EXIT RAMP CLOSURE DETAILS (TC-8).
- NOTE 2: ADD PORTABLE CHANGEABLE MESSAGE SIGN (PCMS) AT THE EAST SIDE OF IL 171 ON SOUTHBOUND I-55.
- NOTE 3: ADD PORTABLE CHANGEABLE MESSAGE SIGN (PCMS) AT THE WEST SIDE OF IL 173 ON NORTHBOUND I-55.



I-55 SB TO I-294 SB DETOUR

LOWCO, INC.
CONSULTING ENGINEERS
1560 WALL ST., SUITE 222
NAPERVILLE, ILLINOIS 60563 PH: (630) 577-9100

DESIGNED - MJY	REVISED - 4/13/2010
DRAWN - SLV	REVISED -
CHECKED - MJY, DC	REVISED -
DATE - 01/29/2010	REVISED -

**STATE OF ILLINOIS
DEPARTMENT OF TRANSPORTATION**

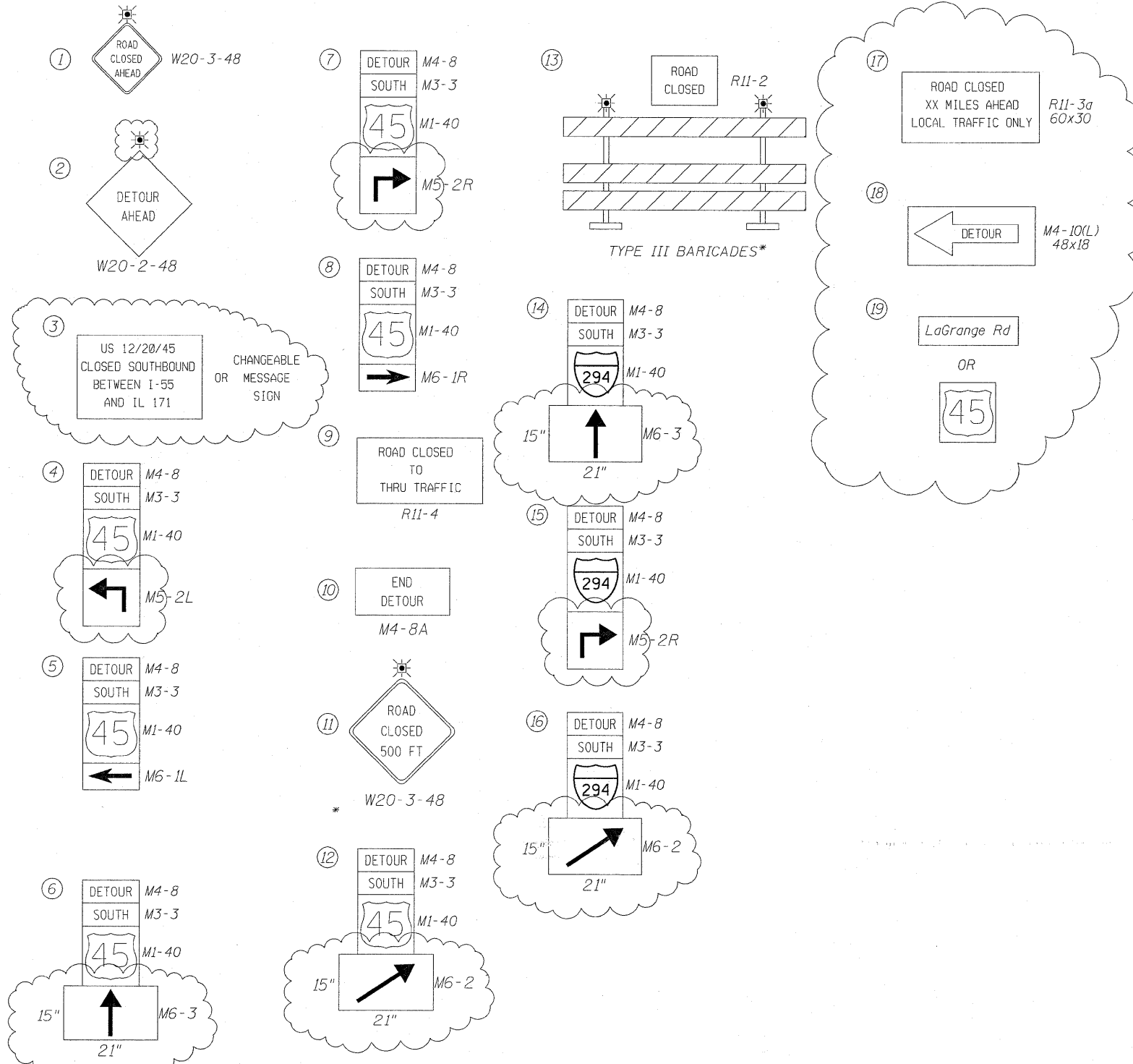
DETOUR PLAN - EXPRESSWAYS
US 12, 20, 45 SB (LA GRANGE RD) OVER CN RR AND CANALS
SCALE: NONE SHEET NO. 13 OF 41 SHEETS STA. 16+97.50 TO STA. 31+99.36

Rev. Sheet 4-15-10

F.A.P. RTE.	SECTION	COUNTY	TOTAL SHEETS	SHEET NO.
330	462 X-B-I-1	COOK	41	13
D-91-228-10			CONTRACT NO. 60J38	
FED. ROAD DIST. NO.		ILLINOIS FED. AID PROJECT		

LEGEND

☐ - TYPE III BARRICADE WITH TWO FLASHING LIGHTS



*IF A TYPE III BARRICADE WITH AN ATTACHED SIGN PANEL WHICH MEETS NCHRP 350 REQUIREMENTS IS NOT AVAILABLE, THE SIGNS SHALL BE MOUNTED, ABOVE THE BARRICADES, ON SEPARATE SIGNS SUPPORTS THAT MEET NCHRP 350 REQUIREMENTS.

EXISTING OVERHEAD SIGNING FOR I-55 NB & SB FOR INFORMATION ONLY

