

F.A.P. RTE.	SECTION	COUNTY	TOTAL SHEETS	SHEET NO.
330	462 X-B-1-1	COOK	44	1
FED. ROAD DIST. NO.	ILLINOIS	CONTRACT NO. 60J38		

D-91-228-10

STATE OF ILLINOIS
DEPARTMENT OF TRANSPORTATION
DIVISION OF HIGHWAYS

**PLANS FOR PROPOSED
FEDERAL AID HIGHWAY**

(F.A.P. ROUTE 330) US ROUTE 12, 20, 45 SOUTHBOUND (LAGRANGE RD)
OVER CN RAIL ROAD AND CANALS (0.9 MI SOUTH OF I-55)

SECTION: 462 X-B-1-1
COOK COUNTY

PROJECT: ACNHF-0330(062)

C-91-228-10

SOUTH BRIDGE REHABILITATION PROJECT
SN 016-2406



STATE OF ILLINOIS
DEPARTMENT OF TRANSPORTATION
DIVISION OF HIGHWAYS

SUBMITTED JANUARY 29, 2010
Diane M. O'Keefe
DEPUTY DIRECTOR OF HIGHWAYS, REGION ENGINEER

March 19 2010
Scott E. Stitt PE, Inc.
ACTING ENGINEER OF DESIGN AND ENVIRONMENT

March 19 2010
Christine M. Reed
DIRECTOR OF HIGHWAYS, CHIEF ENGINEER

PRINTED BY THE AUTHORITY
OF THE STATE OF ILLINOIS

LONGCO, INC.
CONSULTING ENGINEERS
1560 WALL ST., SUITE 222
NAPERVILLE, ILLINOIS 60563 PH: (630) 577-9100

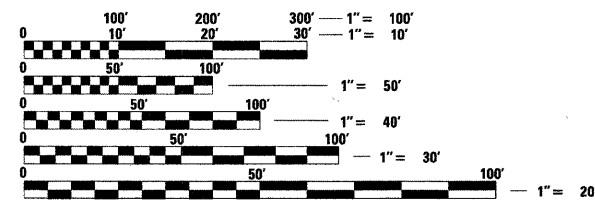
082-047827 REGISTERED PROFESSIONAL ENGINEER ILLINOIS
081-005150 REGISTERED PROFESSIONAL ENGINEER ILLINOIS
EX. 11/30/11 EX. 11/30/10

PROJECT LOCATED IN THE VILLAGE OF
HODGKINS AND THE VILLAGE OF WILLOW
SPRINGS IN COOK COUNTY, IL

FOR INDEX OF SHEETS, SEE SHEET NO. 2

DESIGN DESIGNATION
OTHER PRINCIPAL ARTERIAL

ADT 67400 (2005)
POSTED SPEED LIMIT 45 MPH



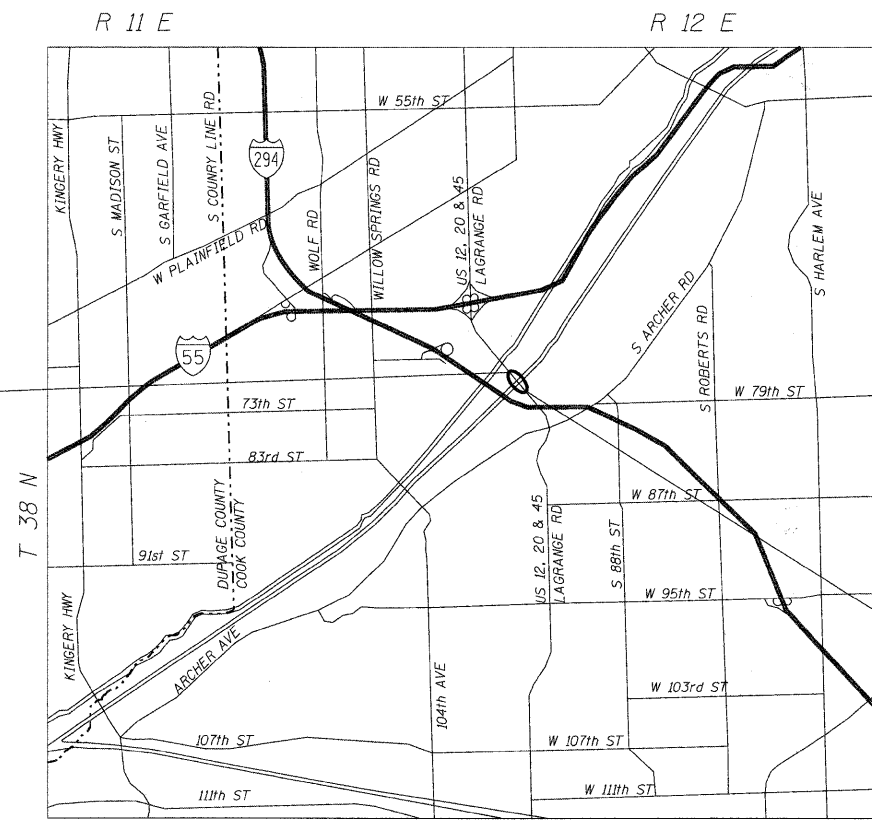
FULL SIZE PLANS HAVE BEEN PREPARED USING STANDARD
ENGINEERING SCALES. REDUCED SIZED PLANS WILL NOT
CONFORM TO STANDARD SCALES. IN MAKING MEASUREMENTS
ON REDUCED PLANS, THE ABOVE SCALES MAY BE USED.

J.U.L.I.E.
JOINT UTILITY LOCATION INFORMATION FOR EXCAVATION
1-800-892-0123
OR 811

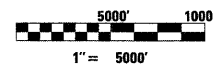
PROJECT MANAGER: KIM HARVEY (847) 705-4055
PROJECT ENGINEER: ERSKINE W. KLYCE (847) 705-4594

CONTRACT NO. 60J38

PROJECT BEGINS
STA. 31+99.36



LOCATION MAP



NET AND GROSS LENGTH OF PROJECT = 1501.86' = 0.284 MI