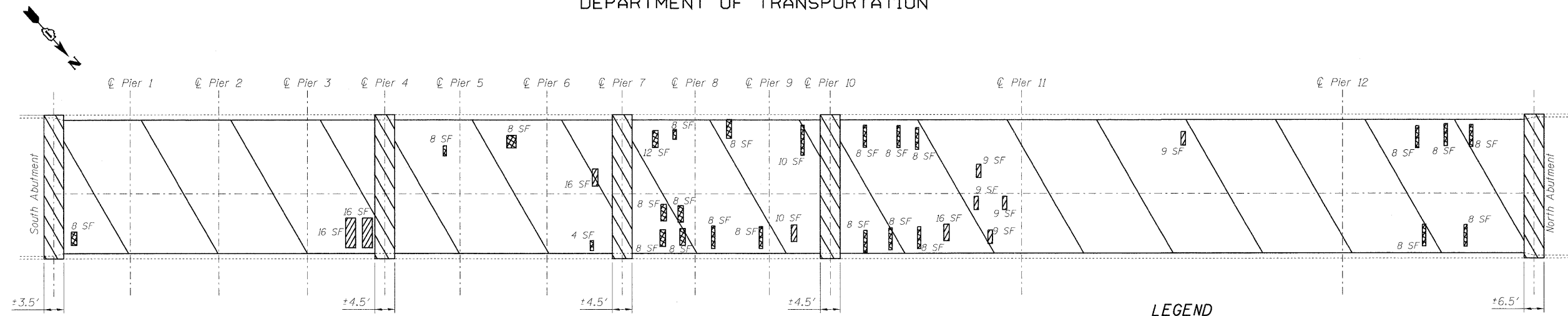


STATE OF ILLINOIS
DEPARTMENT OF TRANSPORTATION



DECK REPAIR PLAN

LEGEND

- Deck Slab Repair (Partial)
- Deck Slab Repair (Full Depth, Type II)
- Concrete Removal and Concrete Superstructure
- Bridge Deck Latex Concrete Overlay

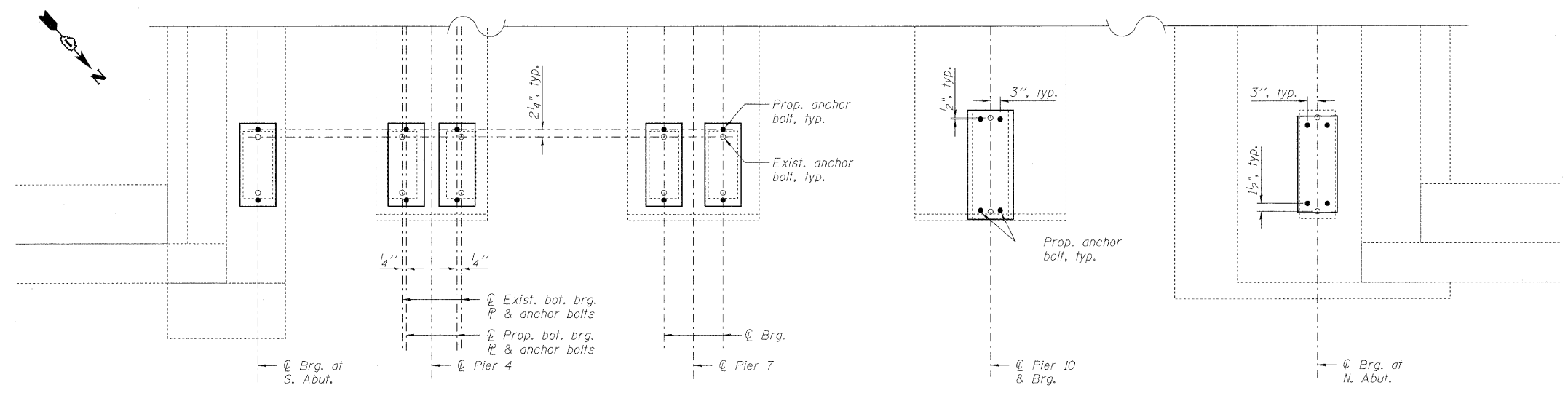
NOTES

See sht. 8-11 of 18 for bearing details for S. Abut, Pier 4, Pier 7, Pier 10 and N. Abut

BILL OF MATERIAL

Item	Unit	Total
Deck Slab Repair (Partial)	Sq. Yd.	14
Deck Slab Repair (Full Depth, Type II)	Sq. Yd.	23
Bridge Deck Grooving	Sq. Yd.	5967
Bridge Deck Latex Concrete Overlay, 2 1/4"	Sq. Yd.	5883

The Engineer shall record the actual Deck Slab Repair areas in the plans. Patches shown are taken from exist. inspection reports. Full depth patches shall only be used in areas where Hydro-Scarification reveals or produces unsound concrete as determined by the Engineer. Quantity for Deck Slab Repair (Partial) is for information only.



PARTIAL PLAN BEARING REPLACEMENTS

No. of Brg. Replacements

Location	No. of Brg. to be Replaced
S. Abut	5
Pier 4	10
Pier 7	10
Pier 10	5
N. Abut	5

DECK REPAIR AND BEARING REPLACEMENT STRUCTURE NO. 016-2406

DESIGNED -	SLV
CHECKED -	DJB
DRAWN -	SLV
CHECKED -	DJB

LOXCO, INC.
CONSULTING ENGINEERS
1560 WALL ST, SUITE 222
NAPERVILLE, ILLINOIS 60563 PH: (630) 577-9100

SHEET NO. 7 OF 18 SHEETS	F.A.P. RTE.	SECTION	COUNTY	TOTAL SHEETS	SHEET NO.
	330	462 X-B-I-1	COOK	41	23
D-91-228-10			CONTRACT NO. 60J38		
FED. ROAD DIST. NO. ILLINOIS FED. AID PROJECT					