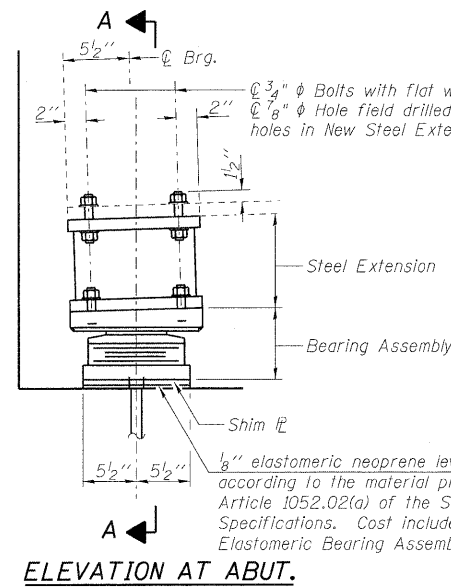
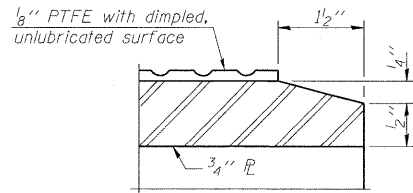
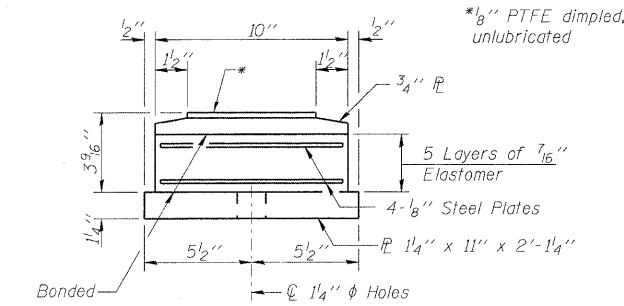
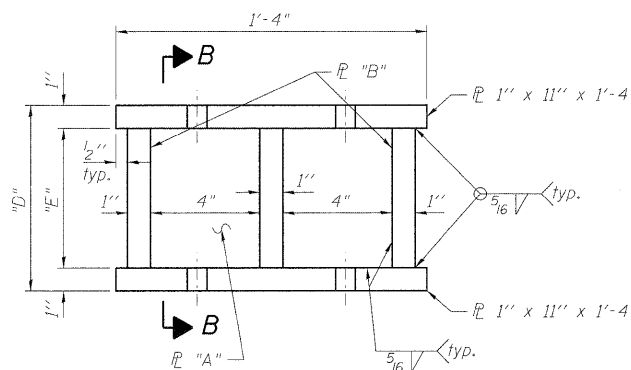
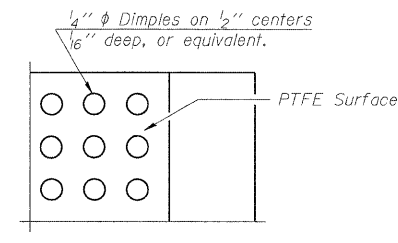
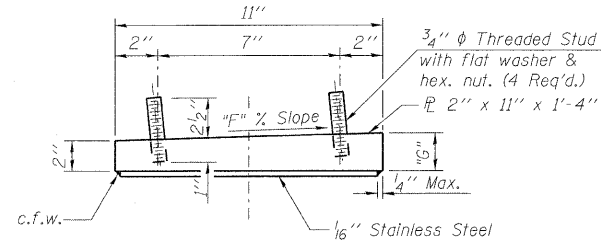
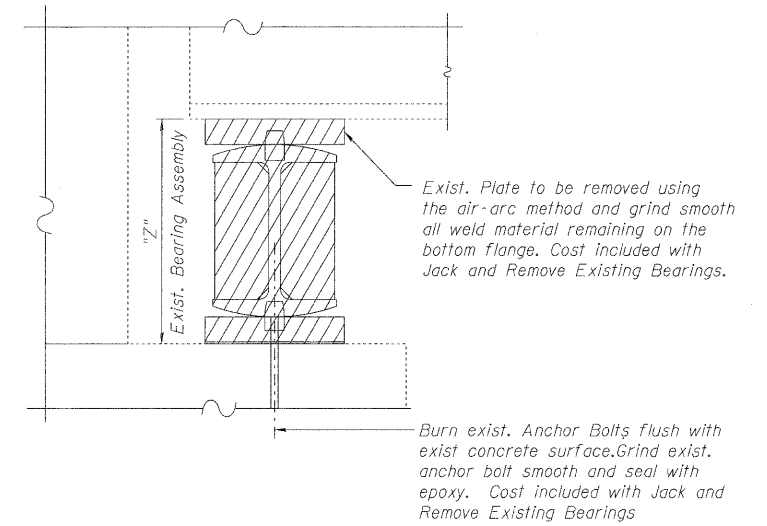
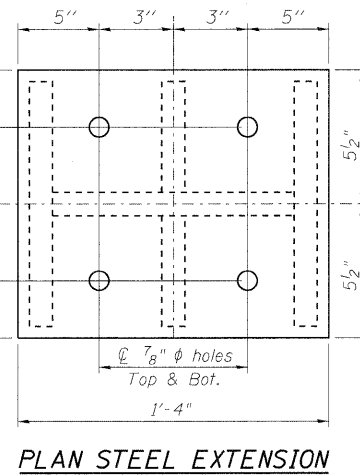
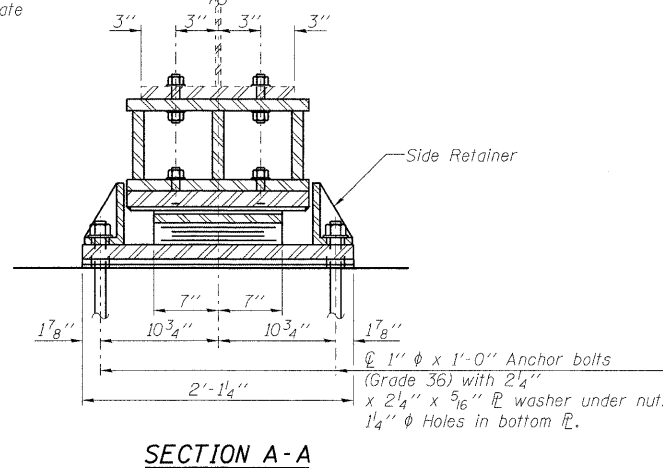


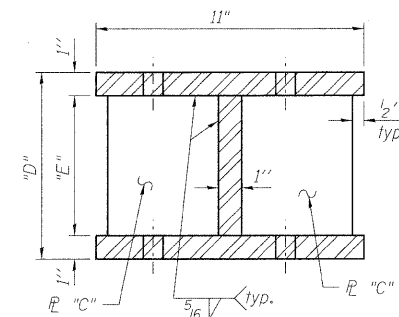
STATE OF ILLINOIS  
DEPARTMENT OF TRANSPORTATION



TYPE II ELASTOMERIC EXP. BRG.



ELEVATION STEEL EXTENSION



Note:  
Prior to ordering any material, the Contractor shall verify in the field all bearing height and shim thickness dimensions.

EXISTING BEARING HEIGHTS

Location	Z
S. Abut	1'-2 1/2"
Pier 4 S.	1'-2 1/2"
Pier 4 N.	1'-2 1/8"

NOTES

Anchor bolts shall be ASTM F1554 all-thread (or an Engineer-approved alternate material) of the grade(s) and diameter(s) specified. ASTM A307 Grade C anchor bolts may be used in lieu of ASTM F1554 Grade 36 (Fy=36ksi). The corresponding specified grade of AASHTO M314 anchor bolts may be used in lieu of ASTM F1554.

Anchor bolts for Type II bearings shall be placed in holes drilled in the concrete through holes in the bottom bearing plate after members are in place. Side retainers shall be placed after bolts are installed.

Drilled and set anchor bolts shall be installed according to Article 521.06 of the Standard Specifications.

Side retainers and other steel members required for the bearing assembly shall be included in the cost of Elastomeric Bearing Assembly, Type II.

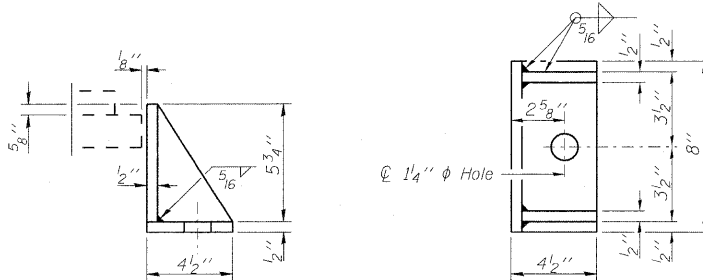
The 1/8" PTFE sheet shall be bonded directly to the top steel plate with a two-component, medium viscosity epoxy resin, conforming to the requirements of the Federal Specification MMM-A-134, Type I. The bond agent shall be applied on the full area of the contact surfaces.

Bonding of 1/8" PTFE sheet during vulcanizing process will be permitted provided the process and method of adjusting assembly height is approved by the Engineer.

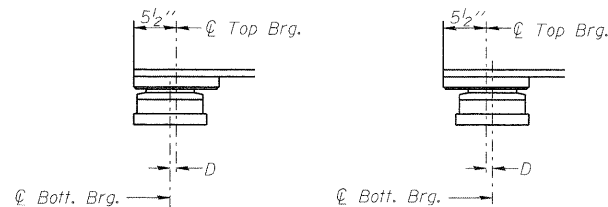
Steel Extensions and fasteners shall be included in the cost of Furnishing and Erecting Structural Steel.

Fasteners shall be AASHTO M164 Type I, mechanically galvanized bolts.

The Contractor is to verify the existing dimensions prior to fabricating the steel extensions. It is intended to keep the existing beams at their current elevation.



Equivalent rolled angle with stiffeners will be allowed in lieu of welded plates.



BELOW 50°F. (Move bott. brg. away from fixed brg.)  
ABOVE 50°F. (Move bott. brg. toward fixed brg.)

SETTING ANCHOR BOLTS AT EXP. BRG.

D=1/8" per each 100' of expansion for every 15° temp. change from the normal temp. of 50°F.

STEEL EXTENSION DIMENSION TABLE

Location	"A"	"B"	"C"	"D"	"E"	"F" %	"G"
S. Abut	1" x 5 1/2" x 1'-1"	1" x 5 1/2" x 0'-10"	1" x 5 1/2" x 0'-4 1/2"	7 1/2"	5 1/2"	2.76	2 3/8"
Pier 4 S.	1" x 5 1/2" x 1'-1"	1" x 5 1/2" x 0'-10"	1" x 5 1/2" x 0'-4 1/2"	7 1/2"	5 1/2"	2.59	2 3/8"
Pier 4 N.	1" x 5 1/2" x 1'-1"	1" x 5 1/2" x 0'-10"	1" x 5 1/2" x 0'-4 1/2"	7 1/2"	5 1/2"	2.20	2 1/4"

GIRDER REACTION TABLE

	S. Abut	Pier 4 S	Pier 4 N
Dead Load (K)	39.2	39.2	38.7
Live Load (K)	54.8	54.8	54.8
Impact (K)	14.2	14.2	14.3
Total (K)	108.2	108.2	107.8
Min. Jack Capacity (Tons)	56	56	56

BILL OF MATERIAL

Item	Unit	Total
Elastomeric Bearing Assembly Type II	Each	15
Anchor Bolts, 1"	Each	30
Jack and Remove Existing Bearings	Each	15
Furnishing and Erecting Structural Steel	Pound	2502

BEARING DETAILS FOR SOUTH ABUTMENT AND PIER 4 STRUCTURE NO. 016-2406

DESIGNED -	SLV
CHECKED -	DJB
DRAWN -	SLV
CHECKED -	DJB

**LOCO, INC.**  
CONSULTING ENGINEERS  
1560 WALL ST, SUITE 222  
NAPERVILLE, ILLINOIS 60563 PH: (630) 577-9100

SHEET NO. 8 OF 18 SHEETS	F.A.P. RTE.	SECTION	COUNTY	TOTAL SHEETS	SHEET NO.
	330	462 X-B-I-1	COOK	41	24
D-91-228-10			CONTRACT NO. 60J38		
FED. ROAD DIST. NO. ILLINOIS FED. AID PROJECT					