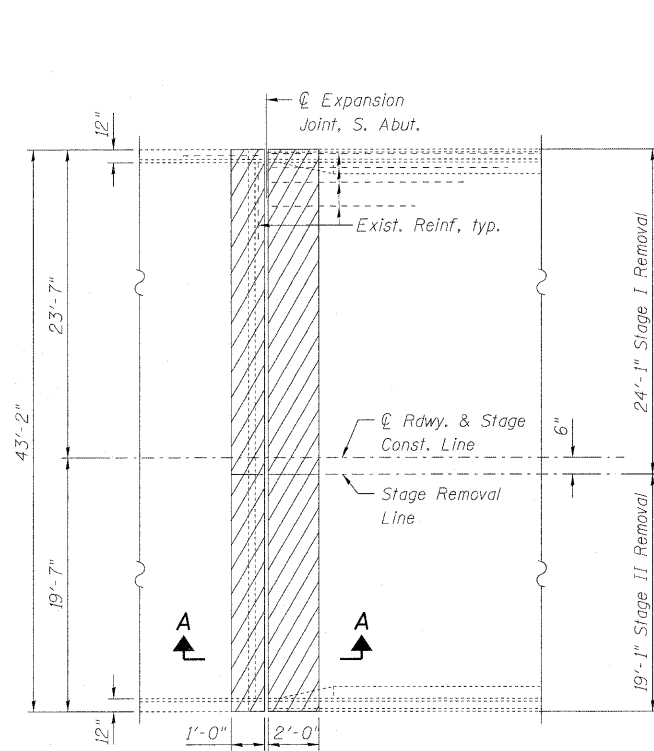


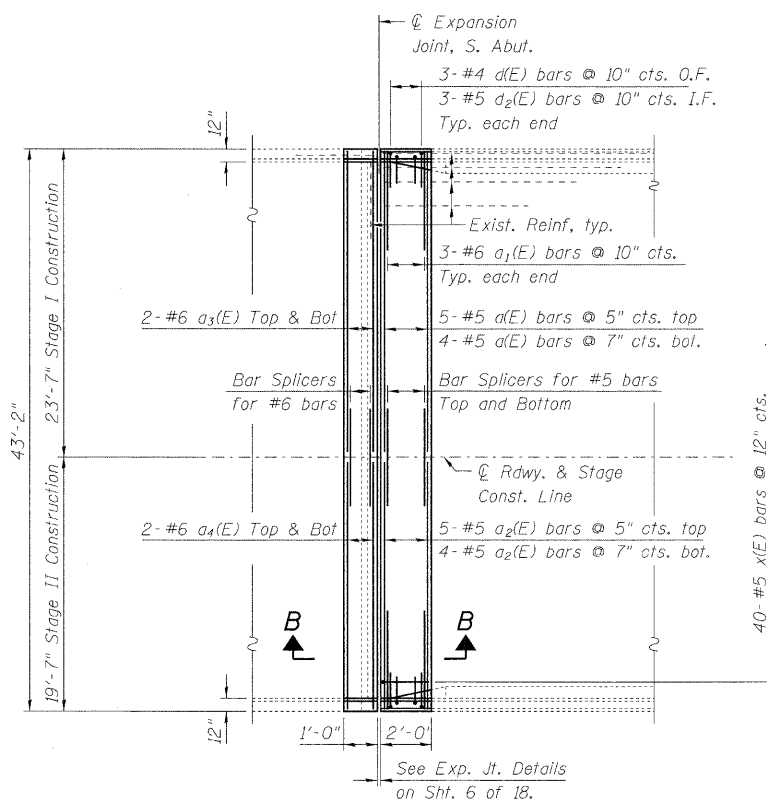
STATE OF ILLINOIS  
DEPARTMENT OF TRANSPORTATION

NOTES

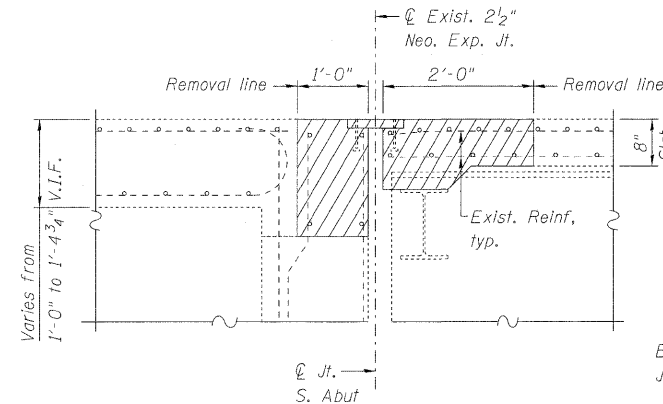
Hatched areas indicated concrete sections to be removed and replaced. Perimeters of concrete removal areas shall be saw cut  $\frac{3}{4}$ " prior to removal of the concrete. Existing reinforcement shall be cleaned, straightened (if required) and incorporated into the new construction. Cost included with Concrete Removal.



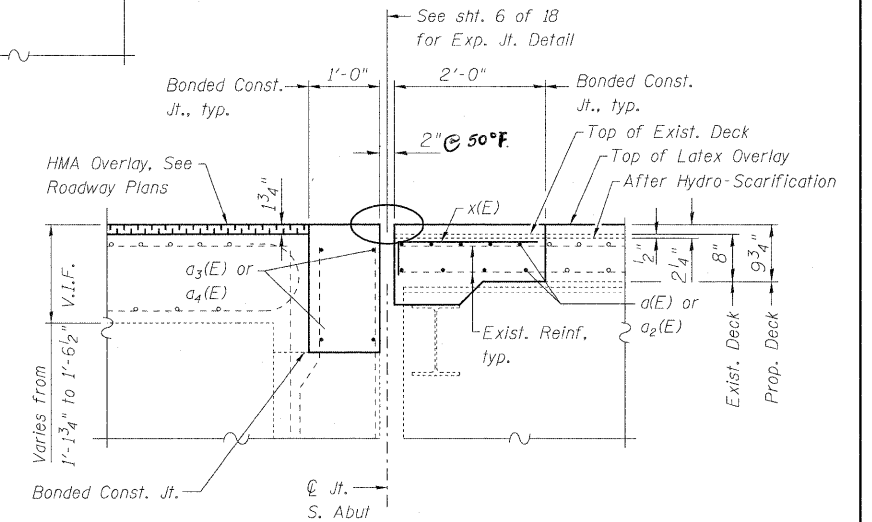
**PARTIAL PLAN SHOWING CONCRETE REMOVAL AT SOUTH ABUTMENT**



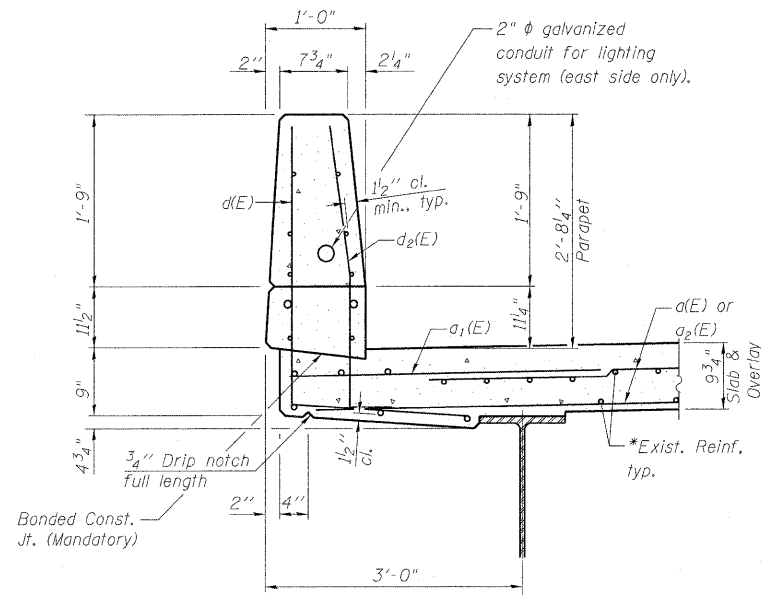
**PARTIAL PLAN SHOWING CONCRETE REPLACEMENT AT SOUTH ABUTMENT**



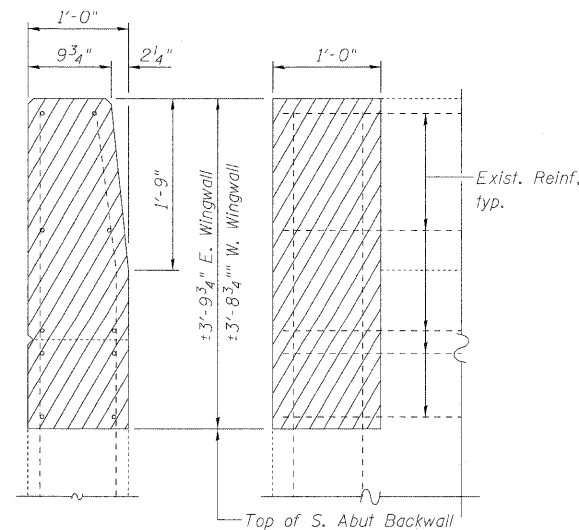
**SECTION A-A**



**SECTION B-B**



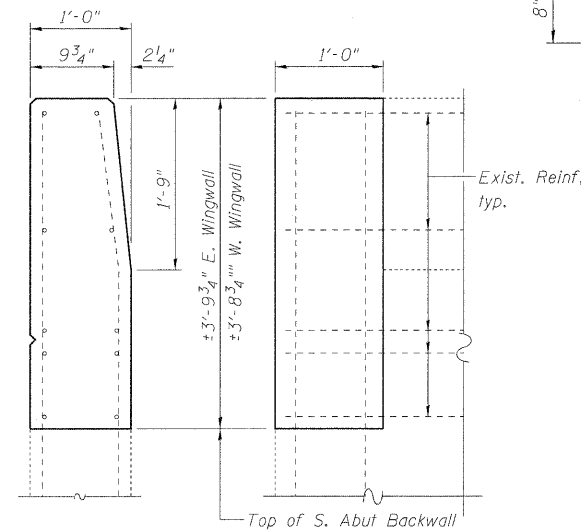
**SECTION THRU PARAPET**



**END VIEW**

**ELEVATION**

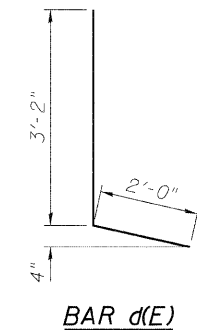
**WINGWALL CONCRETE REMOVAL DETAIL**



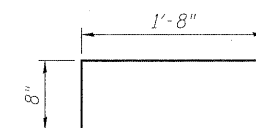
**END VIEW**

**ELEVATION**

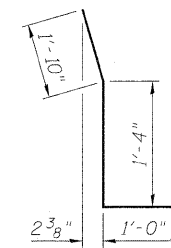
**WINGWALL CONCRETE REPLACEMENT DETAIL**



**BAR d(E)**



**BAR x(E)**



**BAR d2(E)**

**BILL OF MATERIAL**

Bar	No.	Size	Length	Shape
a(E)	9	#5	22'-1"	—
a1(E)	6	#6	6'-0"	—
a2(E)	9	#5	18'-1"	—
a3(E)	4	#6	23'-2"	—
a4(E)	4	#6	19'-2"	—
d(E)	6	#4	5'-2"	—
d2(E)	6	#5	4'-2"	—
x(E)	40	#5	2'-4"	—
Concrete Removal			Cu. Yd.	6.1
Concrete Superstructure			Cu. Yd.	6.8
Bar Splicers			Each	13
Reinforcement Bars, Epoxy Coated			Pound	830

**SOUTH ABUTMENT DETAILS  
STRUCTURE NO. 016-2406**

DESIGNED	SLV
CHECKED	DJB
DRAWN	SLV
CHECKED	DJB

**LONCO, INC.**  
CONSULTING ENGINEERS  
1560 WALL ST, SUITE 222  
NAPERVILLE, ILLINOIS 60563 PH: (630) 577-9100

SHEET NO. 12 OF 18 SHEETS	F.A.P. RTE.	SECTION	COUNTY	TOTAL SHEETS	SHEET NO.
	330	462 X-B-I-1	COOK	41	28
D-91-228-10			CONTRACT NO. 60J38		
FED. ROAD DIST. NO. ILLINOIS FED. AID PROJECT					