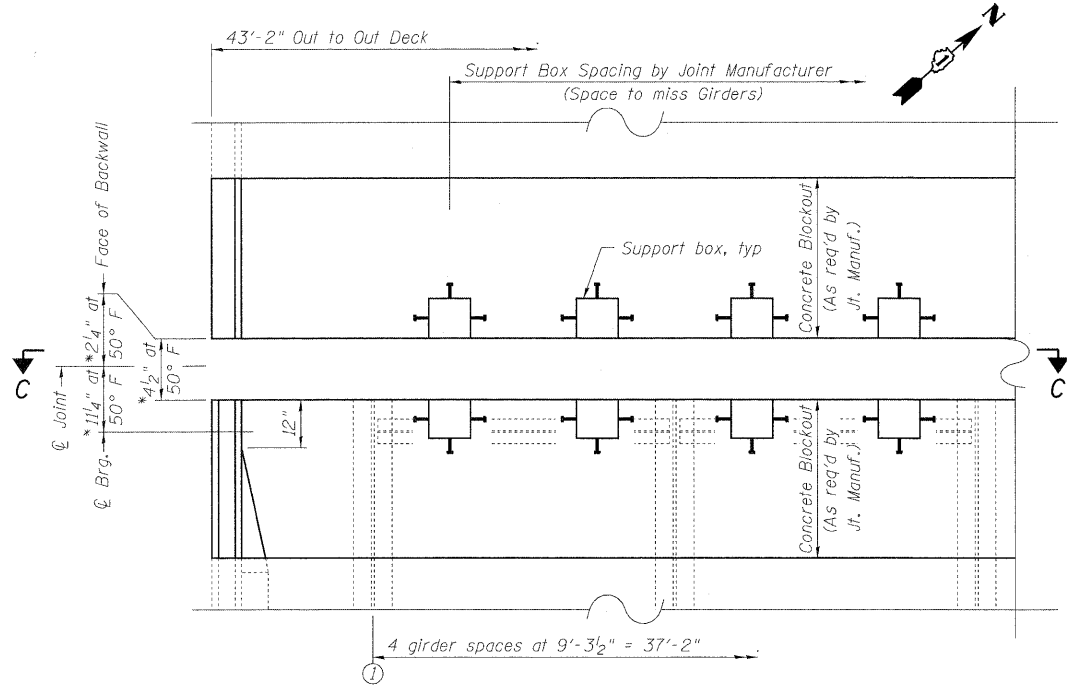
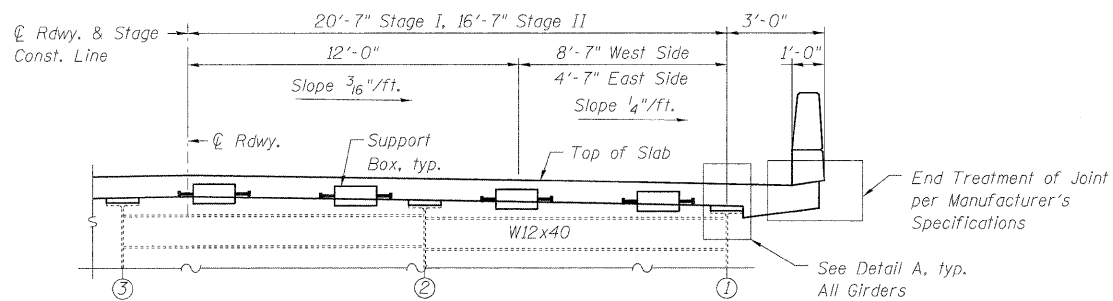


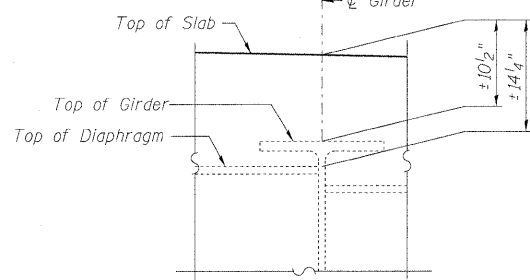
STATE OF ILLINOIS  
DEPARTMENT OF TRANSPORTATION



PARTIAL PLAN AT NORTH ABUTMENT



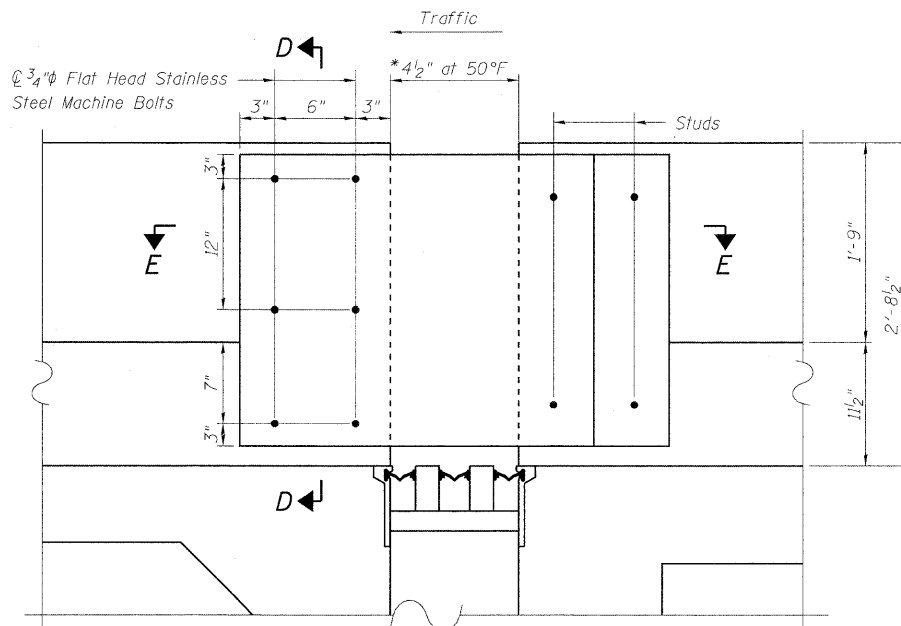
SECTION C-C



DETAIL A

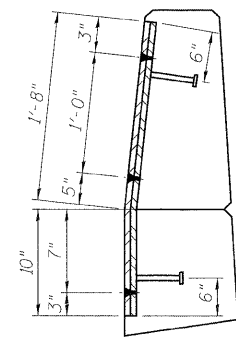
DESIGNED	SLV
CHECKED	DJB
DRAWN	SLV
CHECKED	DJB

**LONCO, INC.**  
CONSULTING ENGINEERS  
1560 WALL ST., SUITE 222  
NAPERVILLE, ILLINOIS 60563 PH: (630) 577-9100

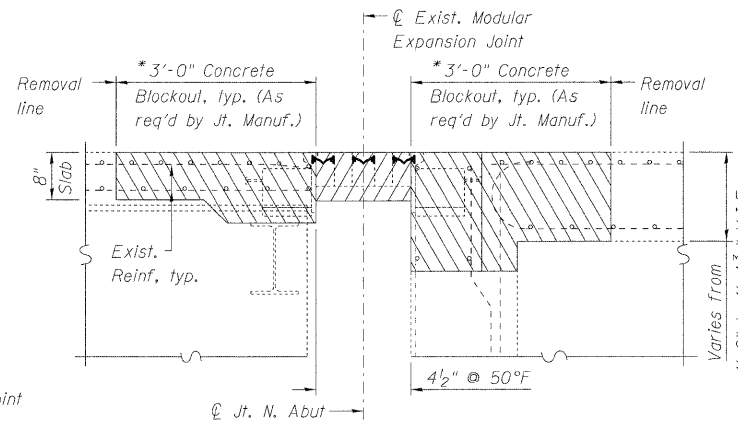


ELEVATION - PARAPET SLIDING  
PLATE AT NORTH ABUTMENT

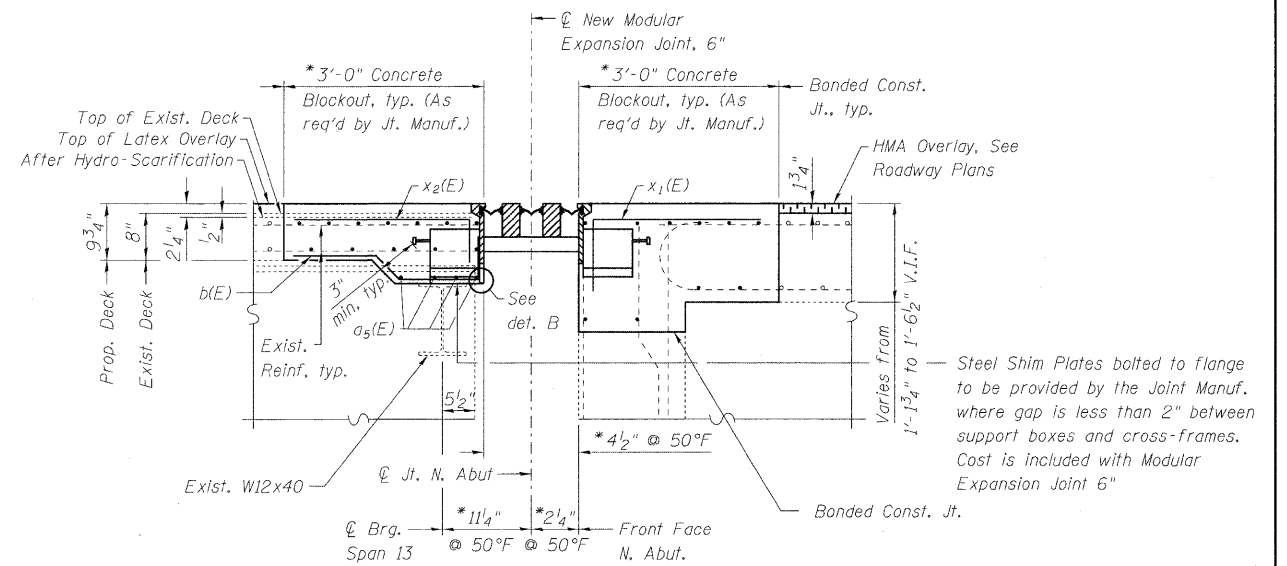
\* Adjusted as required by Joint Manufacturer



SECTION D-D

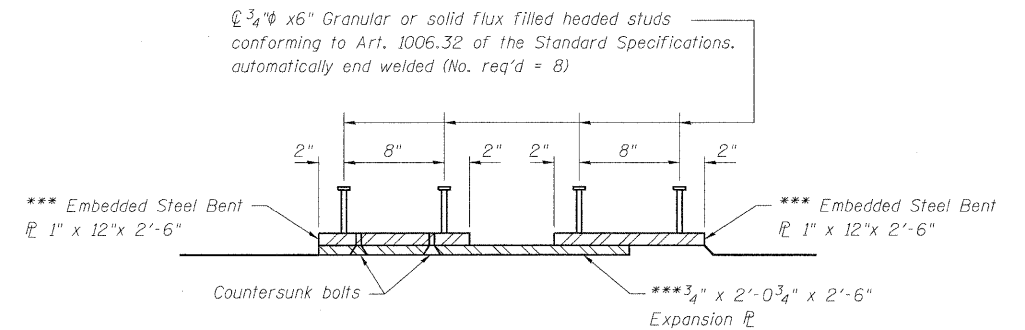


SECTION A-A



SECTION B-B

(Cut or bend reinforcement bars as req'd to miss support boxes by 1 1/2")



SECTION E-E

\*\*\* Expansion Plate and Embedded Plates shall be galvanized According to AASHTO M111. Cost included with Modular Expansion Joint 6"

NOTES

- Modular Expansion Joint shall be designed according to the latest ASTM Specifications for HL-93 Loading with 33% impact and for a minimum movement of ±3" (total of 6").
- The Modular Expansion Joint shall be either Steel flex system by D.S. Brown Company, WABO system, by Watson Bowman Acme Corp., or the LG system, by TechStar Inc.
- Joint shall be fabricated and installed according to the manufacturer's recommendations and as approved by the Engineer.
- Joint shall be fabricated to conform to the Roadway Profile and Cross-Slopes.
- Cost of all hardware and installation of Steel Bearing Shim Plates and additional reinforcement required to anchor the joint to the slab shall be included with "Modular Expansion Joint 6"
- The inorganic zinc rich primer/acrylic/acrylic paint system shall be used for shop and field painting of new structural steel except no top coat required in non-exposed areas. The color of the acrylic finish coat shall be Gray, Munsell No. 5B 7/1/1. See special Provisions.

See sht. 13 of 18 for Detail B.

(Sheet 2 of 2)  
**NORTH ABUTMENT DETAILS**  
**STRUCTURE NO. 016-2406**

SHEET NO. 14 OF 18 SHEETS	F.A.P. RTE. 330	SECTION 462 X-B-I-1	COUNTY COOK	TOTAL SHEETS 41	SHEET NO. 30
	D-91-228-10		CONTRACT NO. 60J38		
FED. ROAD DIST. NO. _ ILLINOIS FED. AID PROJECT					