

INDEX OF SHEETS

SHEET NO.	DESCRIPTION
1	COVER SHEET
2	INDEX OF SHEETS, STATE STANDARDS, GENERAL NOTES
3	SUMMARY OF QUANTITIES
4	TYPICAL SECTIONS
5	ROADWAY PLAN
6-7	PAVEMENT MARKING PLAN
8-16	MAINTENANCE OF TRAFFIC AND STAGING PLANS
17	GENERAL PLAN AND ELEVATION
18	STAGE CONSTRUCTION DETAILS
19	CONCRETE REMOVAL DETAILS
20	DECK SLAB REPAIRS
21-22	SUPERSTRUCTURE DETAILS
23	DRAIN DETAILS
24	PREFORMED JOINT-STRIP SEAL
25	BAR SPLICER ASSEMBLY AND MECHANICAL SPLICER DETAILS
26	DETAILS FOR CONCRETE MEDIAN TYPE SB (DOWELLED) CORRUGATED MEDIAN (MODIFIED)
27	BUTT JOINTS AND HMA TAPER
28	TRAFFIC CONTROL AND PROTECTION FOR SIDE ROADS, INTERSECTIONS AND DRIVEWAYS
29	RAISED REFLECTIVE PAVEMENT MARKERS (SNOW PLOW RESISTANT)
30	DISTRICT ONE TYPICAL PAVEMENT MARKINGS
31	TRAFFIC CONTROL AND PROTECTION AT TURN BAYS TO REMAIN OPEN TO TRAFFIC
32	ARTERIAL ROAD INFORMATION SIGN
33	DRIVEWAY ENTRANCE SIGNING

STATE STANDARDS

STANDARD NO.	DESCRIPTION
000001-05	STANDARD SYMBOLS, ABBREVIATIONS AND PATTERNS
42040-08	BRIDGE APPROACH PAVEMENT CONNECTOR
515001-05	NAME PLATE FOR BRIDGES
606001-04	CONCRETE CURB TYPE B AND COMBINATION CONCRETE CURB AND GUTTER
606301-04	PC CONCRETE ISLANDS AND MEDIANS
701422-02	LANE CLOSURE, MULTILANE, FOR SPEEDS GREATER THAN OR EQUAL TO 45 MPH TO 55 MPH
701426-03	LANE CLOSURE, MULTILANE, INTERMITTENT OR MOVING OPERATIONS FOR SPEEDS GREATER THAN OR EQUAL TO 45 MPH
701431-05	LANE CLOSURE, MULTILANE, UNDIVIDED WITH CROSSOVER FOR SPEEDS GREATER THAN OR EQUAL TO 45 MPH TO 55 MPH
701801-04	LANE CLOSURE MULTILANE 1W OR 2W CROSSWALK OR SIDEWALK CLOSURE
701901-01	TRAFFIC CONTROL DEVICES
720001-01	SIGN PANEL MOUNTING DETAILS
720006-02	SIGN PANEL ERECTION DETAILS
728001-01	TELESCOPING STEEL SIGN SUPPORT
780001-02	TYPICAL PAVEMENT MARKINGS
781001-03	TYPICAL APPLICATIONS RAISED REFLECTIVE PAVEMENT MARKERS

GENERAL NOTES - ROADWAY

- BEFORE STARTING ANY EXCAVATION, THE CONTRACTOR SHALL CALL "J.U.L.I.E." AT (800)892-0123 FOR FIELD LOCATIONS OF BURIED ELECTRIC, TELEPHONE AND GAS UTILITIES. (48 HOUR NOTIFICATION IS REQUIRED.)
- THE CONTRACTOR SHALL COORDINATE CONSTRUCTION ACTIVITIES WITH UTILITY COMPANIES.
- THE CONTRACTOR WILL NOT BE ALLOWED TO SET UP A YARD OR FIELD OFFICE ON STATE PROPERTY WITHOUT WRITTEN PERMISSION FROM THE DEPARTMENT.
- ALL DAMAGE TO EXISTING PAVEMENT MARKING OR RAISED REFLECTIVE PAVEMENT MARKERS OUTSIDE THE REMOVAL LINE SHOWN ON THE PLANS SHALL BE REPLACED AT THE CONTRACTORS EXPENSE.
- WHEN MILLED PAVEMENT IS OPEN TO TRAFFIC THE MAXIMUM GRADE DIFFERENTIAL BETWEEN PASSES OF THE MILLING MACHINE SHALL NOT EXCEED 1 1/2 INCHES WHERE THE SPEED LIMIT IS 45 MPH OR LESS AND 1 INCH WHERE THE SPEED LIMIT IS GREATER THAN 45 MPH. WITH WRITTEN APPROVAL FROM THE ENGINEER, A MAXIMUM GRADE DIFFERENTIAL OF 3 INCHES MAY BE ALLOWED IF THE EDGE OF THE MILLING IS SLOPED A MINIMUM 1:3 (V:H).
- BUTT JOINTS WILL BE INSTALLED AT THE ENDS OF ALL RESURFACING (WHERE RESURFACING MEETS EXISTING PAVEMENT). IN ACCORDANCE WITH "BUTT JOINT AND HOT-MIX ASPHALT TAPER DETAILS" SHEET INCLUDED IN THE PLANS, UNLESS OTHERWISE SPECIFIED.
- THE RESIDENT ENGINEER SHALL CONTACT THE DISTRICT ONE TRAFFIC CONTROL SUPERVISOR AT (847) 705-4470 A MINIMUM OF 72 HOURS PRIOR TO THE PLACEMENT OF ANY TEMPORARY TRAFFIC CONTROL DEVICES.
- WHEN ARTIFICIAL LIGHTING IS UTILIZED IN NIGHT OPERATIONS, THE CONTRACTOR SHALL EXERCISE THE UTMOST PRECAUTIONS IN PREVENTING ADVERSE VISIBILITY TO THE MOTORING PUBLIC AND ADJOINING RESIDENTIAL AREA.
- BEFORE BEGINNING ANY WORK, THE CONTRACTOR SHALL RETAIN AND RECORD (FOR FUTURE REFERENCES), ALL EXISTING PAVEMENT MARKING LINES AND RAISED REFLECTIVE PAVEMENT MARKERS IN ORDER THAT THESE LOCATIONS CAN BE RE-ESTABLISHED FOR STRIPING. EXACT LOCATIONS OF ALL STRIPING SHALL BE AS DIRECTED BY THE ENGINEER.
- THE ENGINEER SHALL CONTACT MR. WALLY TRAFFIC FIELD ENGINEER (OR TECHNICIAN), A MINIMUM OF TWO WEEKS PRIOR TO THE START OF THIS PROJECT SO THAT EXACT STATIONING OF NO PASSING ZONES AND OTHER PERMANENT PAVEMENT MARKINGS MAY BE ESTABLISHED.
- DO NOT SCALE PLANS FOR CONSTRUCTION DIMENSIONS.
- THESE PLANS HAVE BEEN PREPARED FROM NOTES RECEIVED FROM BRIDGE INSPECTORS.
- PAVEMENT MARKING TAPE, TYPE III SHALL BE USED FOR SHORT TERM PAVEMENT MARKINGS ON ALL FINAL SURFACES. THE COST OF THE PAVEMENT MARKING TAPE, TYPE III AND ITS REMOVAL SHALL BE INCLUDED IN THE COST OF SHORT TERM PAVEMENT MARKING.
- SAW CUTTING OF PAVEMENTS, SHOULDERS, ETC., SHALL BE TO FULL DEPTH AND SHALL RESULT IN A CLEAN, STRAIGHT EDGE ON THE PORTION REMAINING. THE COST OF SAW CUTTING REMOVAL ITEMS SHALL BE INCLUDED IN THE UNIT PRICES OF THESE ITEMS.
- THE CONTRACTOR SHALL BE REQUIRED TO PROVIDE ACCESS TO ABUTTING PROPERTY AT ALL TIMES DURING THE CONSTRUCTION OF THIS PROJECT.
- IT SHALL BE THE CONTRACTOR'S RESPONSIBILITY TO VERIFY ALL DIMENSIONS AND CONDITIONS EXISTING IN THE FIELD PRIOR TO CONSTRUCTION AND ORDERING OF MATERIALS.

GENERAL NOTES - TRAFFIC CONTROL & PROTECTION

- THE MAINTENANCE OF TRAFFIC CONTROL (MOT) PLANS SHALL SERVE AS A GUIDE FOR SAFE DIVERSION OF TRAFFIC DURING EXECUTION OF THIS CONTRACT. HOWEVER, THE CONTRACTOR MAY IMPROVE OR MODIFY THE MOT PLANS TO MEET CONSTRUCTION NEEDS BUT NOT AT THE EXPENSE OF PUBLIC SAFETY OR CONVENIENCE. ANY CHANGES TO THE MOT PLANS SHALL BE SUBMITTED TO THE ENGINEER FOR APPROVAL.
- THE ENGINEER SHALL BE INFORMED 48 HOURS IN ADVANCE OF ANY CHANGE TO THE MOT PLANS.
- ALL EXISTING PAVEMENT MARKINGS AND RAISED PAVEMENT MARKERS IN CONFLICT WITH THE MAINTENANCE OF TRAFFIC STRIPING SHALL BE REMOVED. THIS WORK WILL BE PAID FOR AT THE CONTRACT UNIT PRICE PER SQUARE FOOT, "PAVEMENT MARKING REMOVAL".
- THE CONTRACTOR SHALL REMOVE ALL TEMPORARY PAVEMENT MARKING TAPE WHICH CONFLICTS WITH THE NEXT STAGE OR FINAL STRIPING. REMOVAL OF TEMPORARY PAVEMENT MARKING TAPE WILL BE PAID FOR AT THE CONTRACT UNIT PRICE PER FOOT, "WORK ZONE PAVEMENT MARKING REMOVAL".
- ALL TRAFFIC CONTROL DEVICES USED FOR THE MAINTENANCE OF TRAFFIC, AS DETAILED ON THE PLANS, OR HIGHWAY STANDARDS SHALL BE REFLECTORIZED PRIOR TO INSTALLATION AND CLEANED AS SPECIFIED IN MAINTENANCE OF TRAFFIC SPECIAL PROVISIONS OR AS DIRECTED BY THE ENGINEER.
- ALL DRUMS, VERTICAL PANELS AND BARRICADES ADJACENT TO THE EDGE OF TRAVELED WAY SHALL BE EQUIPPED WITH STEADY-BURNING LIGHTS.
- ALL EXISTING SIGNS WITHIN THE LIMITS OF MAINTENANCE OF TRAFFIC WHICH ARE OBTSCURED BY OR OTHERWISE INTERFERED WITH BY THE CONSTRUCTION OPERATIONS AND MAINTENANCE OF TRAFFIC SHALL BE COVERED OR REMOVED BY THE CONTRACTOR UNLESS SPECIFIED IN THE PLANS OR WHEN DIRECTED BY THE ENGINEER. THIS WORK SHALL BE IN ACCORDANCE WITH ARTICLE 107.25 OF THE IDOT STANDARD SPECIFICATIONS.
- TEMPORARY, OFF-PEAK HOUR LANE CLOSURES MUST BE REQUESTED THROUGH THE ENGINEER AND AS SPECIFIED IN THE SPECIAL PROVISIONS. WHEN OFF-PEAK HOUR OR WEEKEND LANE CLOSURES ARE REQUIRED, A PORTABLE CHANGEABLE MESSAGE SIGN SHALL BE INSTALLED ONE WEEK PRIOR TO THE CLOSURE. THE MESSAGE SIGN WORDING AND LOCATION WILL BE DETERMINED BY THE ENGINEER.
- ALL TEMPORARY INFORMATION SIGNS SHALL BE PAID FOR SEPARATELY AT THE CONTRACT UNIT PRICE PER SQUARE FEET FOR "TEMPORARY INFORMATION SIGNING".
- TRAFFIC CONDITIONS, ACCIDENTS AND OTHER UNFORESEEN EMERGENCY CONDITIONS MAY REQUIRE THE ENGINEER TO RESTRICT, MODIFY OR REMOVE LANE CLOSURES OF CHANNELIZATION SHOWN IN THE PLANS. THE CONTRACTOR SHALL MAKE THE NECESSARY ADJUSTMENTS AS DIRECTED BY THE ENGINEER WITHOUT DELAY. THE CONTRACTOR SHALL RESPOND TO ANY REQUEST MADE BY THE ENGINEER FOR CORRECTION WITHIN TWO HOURS FROM THE TIME OF NOTIFICATION.
- ALL TEMPORARY PAVEMENT MARKINGS PROPOSED WITHIN THE WORK AREA SHALL BE COMPLETED PRIOR TO THE CONSTRUCTION PHASE CHANGE.
- FOR ADDITIONAL BRIDGE CONSTRUCTION STAGING INFORMATION, SEE STRUCTURAL PLANS.
- BARRICADES: THE CONTRACTOR SHALL PROVIDE AND INSTALL TWO (2) WEIGHTED SAND BAGS ON EACH TYPE I OR TYPE II BARRICADE USED - ONE (1) WEIGHTED SAND BAG ACROSS EACH BOTTOM RAIL.

PLOT DATE = 1/28/2010
 FILE NAME = K:\1125922\CADD\Sheets\1172_GenNotes.dgn
 PLOT SCALE = 1:1
 MODEL = 0



Excellence through Ownership

200 West Front Street
Wheaton, IL 60187

DESIGNED - MTH	REVISED -
DRAWN - DJW	REVISED -
CHECKED - MAK	REVISED -
DATE - 1/28/2010 6:25:37 PM	REVISED -

**STATE OF ILLINOIS
DEPARTMENT OF TRANSPORTATION**

**IL-72 OVER DESPLAINES RIVER
SN 016-0665**

SCALE: N/A SHEET NO. 2 OF 33 SHEETS

**INDEX OF SHEETS, STATE
STANDARDS, GENERAL NOTES**

STA. TO STA.

F.A.U. RTE.	SECTION	COUNTY	TOTAL SHEETS	SHEET NO.
1350	1292-1	COOK	33	2
CONTRACT NO. 60J57				

FED. ROAD DIST. NO. 1 ILLINOIS FED. AID PROJECT

Rev: 3-31-10

URBAN
80% FED.
20% STATE

URBAN
80% FED.
20% STATE

SUMMARY OF QUANTITIES					CONSTRUCTION TYPE CODE BRIDGE SN 016-0322
CODE NO.	ITEM DESCRIPTION	UNIT	TOTAL QUANTITY	SFTY-2A QUANTITY	
31100200	SUB-BASE GRANULAR MATERIAL, TYPE A	CU YD	208	208	
40600200	BITUMINOUS MATERIALS (PRIME COAT)	TON	0.8	0.8	
40600300	AGGREGATE (PRIME COAT)	TON	2	2	
40600895	CONSTRUCTING TEST STRIP	EACH	1	1	
40603595	POLYMERIZED HOT-MIX ASPHALT SURFACE COURSE, MIX "F", N90	TON	96	96	
44000156	HOT-MIX ASPHALT SURFACE REMOVAL, 1 3/4"	SQ YD	974	974	
44000500	COMBINATION CURB AND GUTTER REMOVAL	FOOT	619	619	
44001420	BRIDGE APPROACH PAVEMENT CONNECTOR (PCC)	SQ YD	68	68	
44000915	HOT-MIX ASPHALT SURFACE REMOVAL (DECK)	SQ YD	1,134	1,134	
44001700	COMBINATION CONCRETE CURB AND GUTTER REMOVAL AND REPLACEMENT	FOOT	100	100	
44003100	MEDIAN REMOVAL	SQ FT	5,077	5,077	
44004482	PAVEMENT REMOVAL (SPECIAL)	CU YD	25	25	
44003700	MEDIAN REMOVAL (SPECIAL)	SQ FT	2,706	2,706	
50102400	CONCRETE REMOVAL	CU YD	75.4	75.4	
50300100	FLOOR DRAINS	EACH	29	29	
50300255	CONCRETE SUPERSTRUCTURE	CU YD	78	78	
50300260	BRIDGE DECK GROOVING	SQ YD	1,064	1,064	
50300300	PROTECTIVE COAT	SQ YD	1,193	1,193	
50800205	REINFORCEMENT BARS, EPOXY COATED	POUND	12,480	12,480	
50800515	BAR SPLICERS	EACH	22	22	
52000110	PREFORMED JOINT STRIP SEAL	FOOT	181	181	
58700300	CONCRETE SEALER	SQ FT	6,950	6,950	
60250400	CATCH BASINS TO BE ADJUSTED WITH NEW TYPE I FRAME, OPEN LID	EACH	3	3	
60605600	COMBINATION CONCRETE CURB AND CUTTER, TYPE B-9.06	FOOT	619	619	
60618300	CONCRETE MEDIAN SURFACE, 4 INCH	SQ FT	4,811	4,811	
60620354	CONCRETE MEDIAN, TYPE SB-9 (DOWELLED)	SQ FT	2,706	2,706	
60624600	CORRUGATED MEDIAN	SQ FT	266	266	
67000400	ENGINEER'S FIELD OFFICE, TYPE A	CAL MO	6	6	
67100100	MOBILIZATION	L SUM	1	1	
70101800	TRAFFIC CONTROL AND PROTECTION, (SPECIAL)	L SUM	1	1	
70300100	SHORT-TERM PAVEMENT MARKING	FOOT	1,154	1,154	
70301000	WORK ZONE PAVEMENT MARKING REMOVAL	SQ FT	21,608	21,608	
* 72000100	SIGN PANEL - TYPE 1	SQ FT	15	15	
* 72400100	REMOVE SIGN PANEL ASSEMBLY - TYPE A	EACH	3	3	
* 72800100	TELESCOPING STEEL SIGN SUPPORT	FOOT	41	41	
* 78000100	THERMOPLASTIC PAVEMENT MARKING - LETTERS AND SYMBOLS	SQ FT	110	110	
* 78000200	THERMOPLASTIC PAVEMENT MARKING - LINE 4"	FOOT	5,632	5,632	

* SPECIALTY ITEM

SUMMARY OF QUANTITIES					CONSTRUCTION TYPE CODE BRIDGE SN 016-0322
CODE NO.	ITEM DESCRIPTION	UNIT	TOTAL QUANTITY	SFTY-2A QUANTITY	
* 78000400	THERMOPLASTIC PAVEMENT MARKING - LINE 6"	FOOT	459	459	
* 78000650	THERMOPLASTIC PAVEMENT MARKING - LINE 24"	FOOT	38	38	
* 78008210	POLYUREA PAVEMENT MARKING TYPE I - LINE 4"	FOOT	1,220	1,220	
* 78100100	RAISED REFLECTIVE PAVEMENT MARKER	EACH	246	246	
* 78100105	RAISED REFLECTIVE PAVEMENT MARKER (BRIDGE)	EACH	10	10	
78300100	PAVEMENT MARKING REMOVAL	SQ FT	2,293	2,293	
78300200	RAISED REFLECTIVE PAVEMENT MARKER REMOVAL	EACH	222	222	
X0326760	CLEAN & RESEAL RELIEF JOINT	FOOT	150	150	
X0322185	BRIDGE DECK LATEX CONCRETE OVERLAY, 2 1/4 INCHES	SQ YD	1,134	1,134	
X0322256	TEMPORARY INFORMATION SIGNING	SQ FT	103	103	
X0325775	WET REFLECTIVE TEMPORARY TAPE, TYPE III, 4 INCH	FOOT	20,454	20,454	
X0712400	TEMPORARY PAVEMENT	SQ YD	569	569	
X0919000	TEMPORARY PAVEMENT REMOVAL	SQ YD	569	569	
NP 2000500	DRAINAGE STRUCTURES TO BE CLEANED	EACH	4	4	
Z0006204	BRIDGE DECK HYDRO-SCARIFICATION 1/2"	SQ YD	1,134	1,134	
Z0016001	DECK SLAB REPAIR (FULL DEPTH, TYPE I)	SQ YD	7.5	7.5	
Z0016002	DECK SLAB REPAIR (FULL DEPTH, TYPE II)	SQ YD	10	10	
50157300	PROTECTIVE SHIELD	SQ YD	1745	1745	

* SPECIALTY ITEM
NP Non-participating

PLOT DATE = 1/28/2010
FILE NAME = K:\11225822\CAD\Sheets\IL72_S00.dgn
PLOT SCALE = 1:1
PLOTTER = HP DesignJet 500
MODEL = 500

rjngroup

Excellence through Ownership

200 West Front Street
Wheaton, IL 60187

DESIGNED - MTH
DRAWN - DJW
CHECKED - MAK
DATE - 1/28/2010 6:25:37 PM

REVISED -
REVISED -
REVISED -
REVISED -

STATE OF ILLINOIS
DEPARTMENT OF TRANSPORTATION

IL-72 OVER DESPLAINES RIVER
SN 016-0665

SCALE: 1

SHEET NO. 3 OF 33 SHEETS

STA. TO STA.

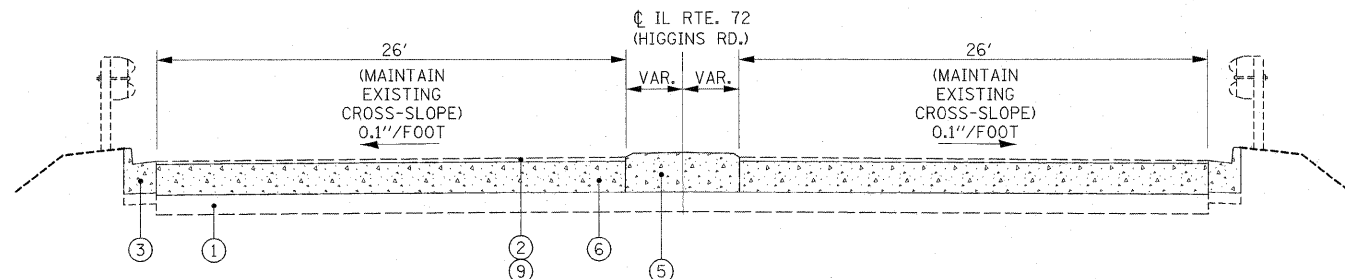
Rev. 3-31-10

Rev.

SUMMARY OF QUANTITIES

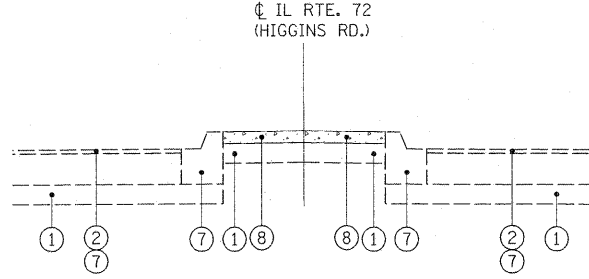
F.A.U. RTE.	SECTION	COUNTY	TOTAL SHEETS	SHEET NO.
1350	1292-1	COOK	33	3

CONTRACT NO. 60J57
FED. ROAD DIST. NO. 1 ILLINOIS FED. AID PROJECT



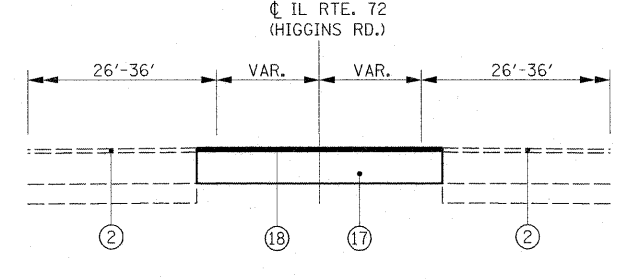
EXISTING TYPICAL SECTION

STA. 116+26 TO 116+93



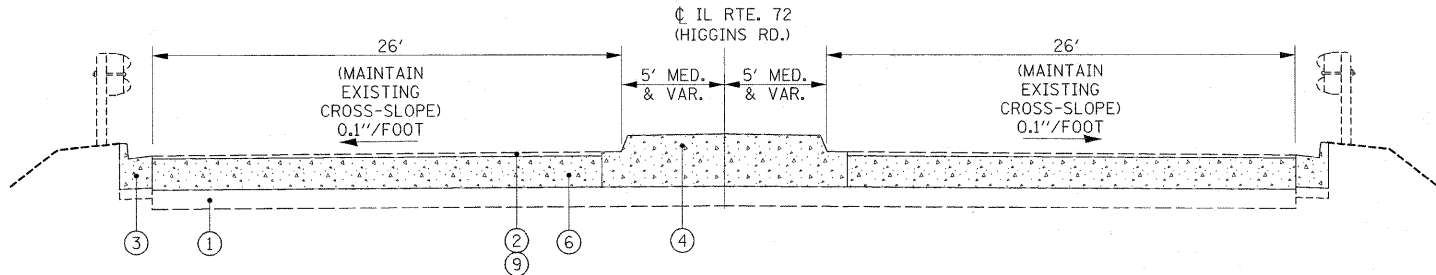
EXISTING TYPICAL SECTION

STA. 105+13 TO 108+20



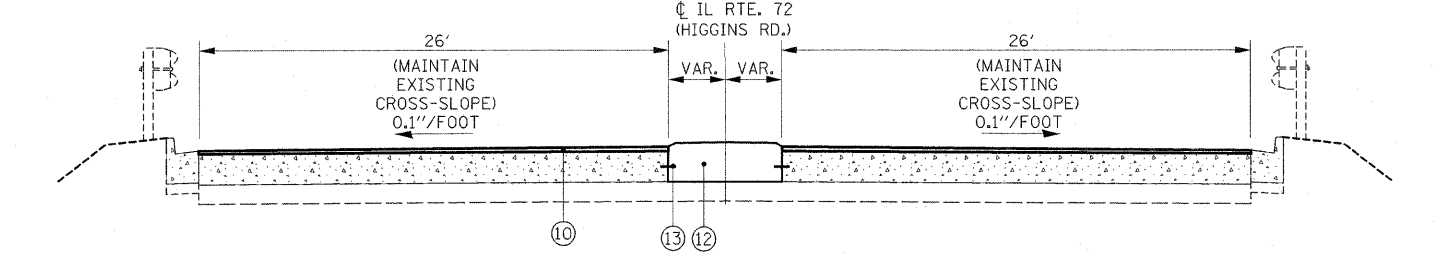
STAGING TYPICAL SECTION

STA. 105+13 TO 108+20



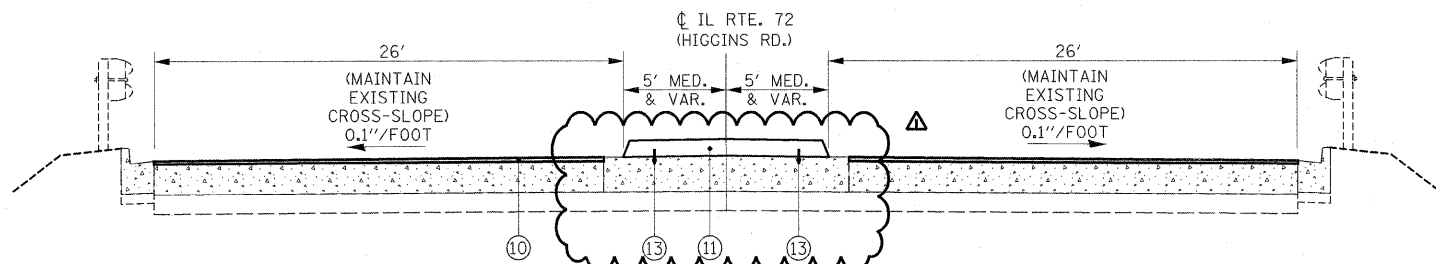
EXISTING TYPICAL SECTION

STA. 113+65 TO 114+26



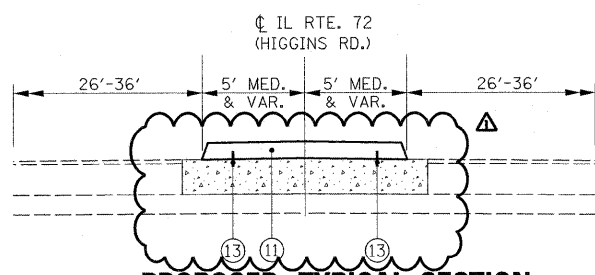
PROPOSED TYPICAL SECTION

PAVEMENT RESURFACING:
STA. 116+26 TO 116+93
MEDIAN REMOVAL AND REPLACEMENT:
STA. 116+26 TO 117+02



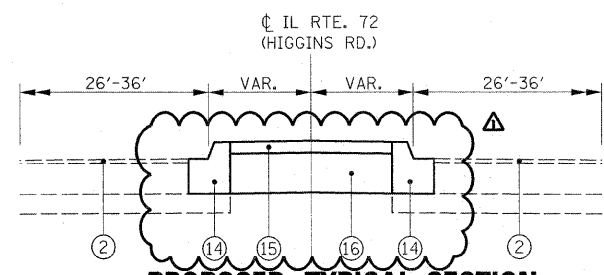
PROPOSED TYPICAL SECTION

STA. 113+68 TO 114+26



PROPOSED TYPICAL SECTION

STA. 109+19 TO 113+68



PROPOSED TYPICAL SECTION

STA. 105+13 TO 108+20

LEGEND

- ① EXISTING AGGREGATE BASE COURSE
- ② EXISTING HOT-MIX ASPHALT OVERLAY, 1 1/2"
- ③ EXISTING COMBINATION CURB AND GUTTER, TYPE B-6.24
- ④ EXISTING CONCRETE BARRIER MEDIAN TYPE SB-9.06
- ⑤ EXISTING CONCRETE CORRUGATED MEDIAN
- ⑥ EXISTING CONCRETE APPROACH SLAB
- ⑦ EXISTING COMBINATION CONCRETE CURB AND GUTTER, TYPE B-9.06
- ⑧ EXISTING CONCRETE MEDIAN SURFACE, 4"
- ⑨ PROPOSED HOT-MIX ASPHALT SURFACE REMOVAL, 1 3/4" Δ
- ⑩ PROPOSED POLYMERIZED HOT-MIX ASPHALT SURFACE COURSE, MIX "F", N90, 1 3/4" Δ
- ⑪ PROPOSED CONCRETE BARRIER MEDIAN, TYPE SB-9 (DOWELLED) Δ
- ⑫ PROPOSED CONCRETE CORRUGATED MEDIAN
- ⑬ TIE BARS, NO. 5, 12" LONG, EMBEDDED 6" INTO EXISTING PAVEMENT @ 30" O.C. (SEE SHEET 26) Δ
- ⑭ PROPOSED COMBINATION CONCRETE CURB AND GUTTER, TYPE B-9.06
- ⑮ PROPOSED CONCRETE MEDIAN SURFACE, 4"
- ⑯ PROPOSED SUB-BASE GRANULAR MATERIAL, TYPE A
- ⑰ TEMPORARY PAVEMENT (HMA BINDER IL-19 mm), 10" Δ
- ⑱ HMA SURFACE COURSE, MIX "D", N50 (IL 9.5 mm), 1 1/2" (PAID FOR AS TEMPORARY PAVEMENT)

HOT-MIX ASPHALT MIXTURE REQUIREMENTS

	MIXTURE USES	VOIDS
MAIN ROADWAY RESURFACING	POLYMERIZED HOT-MIX ASPHALT SURFACE COURSE, MIX "F", N90 (IL-9.5mm)	4% @ 90 GYR.
TEMPORARY PAVEMENT	TEMP PAVEMENT (HMA BINDER IL-19 mm)	4% @ 50 GYR.
TEMPORARY PAVEMENT	HMA SURFACE COURSE, MIX "D", N50 (IL 9.5 mm)	4% @ 50 GYR.

NOTE:
THE UNIT WEIGHT USED TO CALCULATE ALL HOT-MIX ASPHALT SURFACE MIXTURES IS 112 LBS/SQ YD/IN.

THE "AC TYPE" FOR POLYMERIZED HMA MIXES SHALL BE "SBS/SBR PG 70-22" AND FOR NON-POLYMERIZED HMA THE "AC TYPE" SHALL BE "PG 64-22" UNLESS MODIFIED BY DISTRICT ONE SPECIAL PROVISIONS. FOR "PERCENT OF RAP" SEE DISTRICT ONE SPECIAL PROVISIONS.

PLOT DATE = 3/23/2010
 PLOT SCALE = 1/8" = 1'-0"
 USER NAME = chedda
 MODEL = Default



200 West Front Street
Wheaton, IL 60187

DESIGNED - MTH	REVISED Δ2/16/2010 IDOT COMMENTS
DRAWN - DJW	REVISED
CHECKED - MAK	REVISED
DATE - 3/23/2010 9:51:12 AM	REVISED

STATE OF ILLINOIS
DEPARTMENT OF TRANSPORTATION

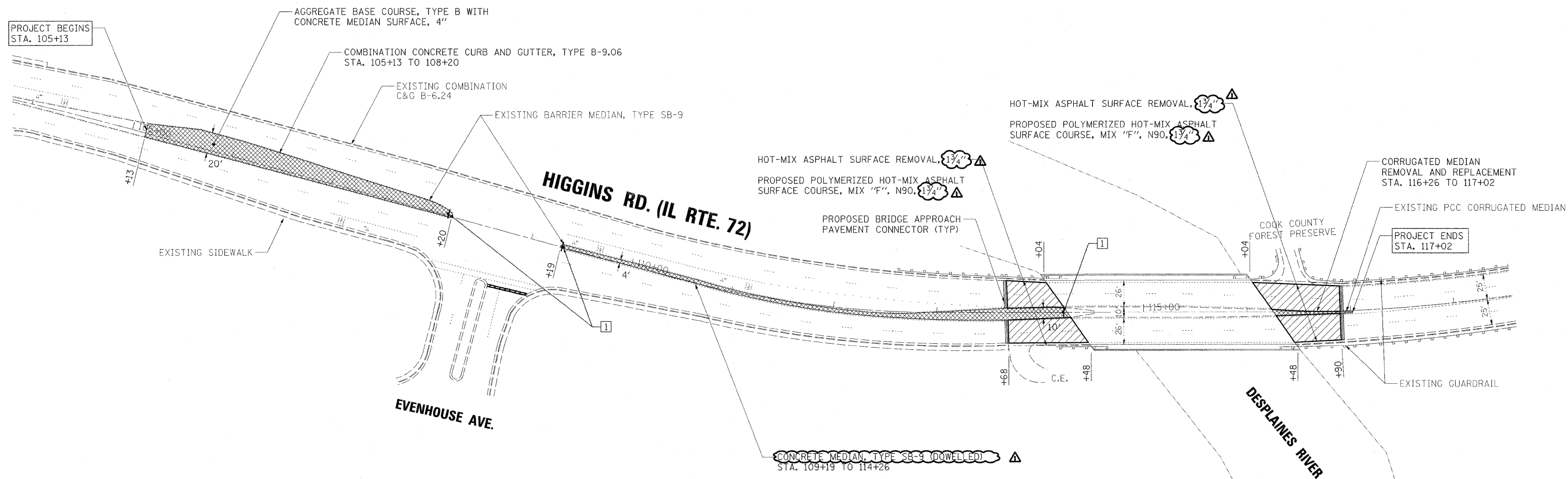
IL-72 OVER DESPLAINES RIVER
SN 016-0665

TYPICAL SECTIONS

F.A.U. RTE. 1350	SECTION 1292-1	COUNTY COOK	TOTAL SHEETS 33	SHEET NO. 4
CONTRACT NO. 60J57				

SCALE: NTS SHEET NO. 4 OF 33 SHEETS STA. TO STA.

FED. ROAD DIST. NO. 1 (ILLINOIS) FED. AID PROJECT



R4-7
24" X 30"

PLOT DATE = 3/23/2010
 PLOT SCALE = 1/8" = 1'-0"
 USER NAME = chrcdas
 MODEL = DeFault

rjngroup
 Excellence through Ownership

200 West Front Street
 Wheaton, IL 60187

DESIGNED - MTH	REVISED Δ2/16/2010 IDOT COMMENTS
DRAWN - DJW	REVISED -
CHECKED - MAK	REVISED -
DATE - 3/23/2010 9:51:12 AM	REVISED -

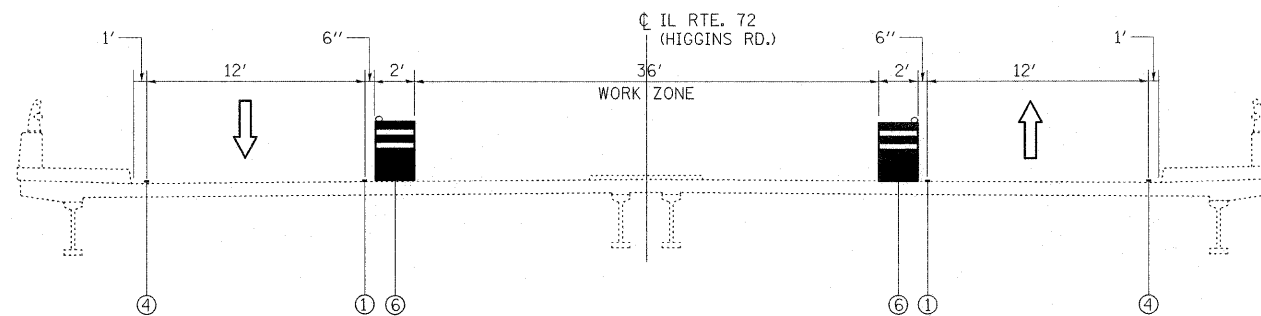
STATE OF ILLINOIS
 DEPARTMENT OF TRANSPORTATION

IL-72 OVER DESPLAINES RIVER
 SN 016-0665

ROADWAY PLAN

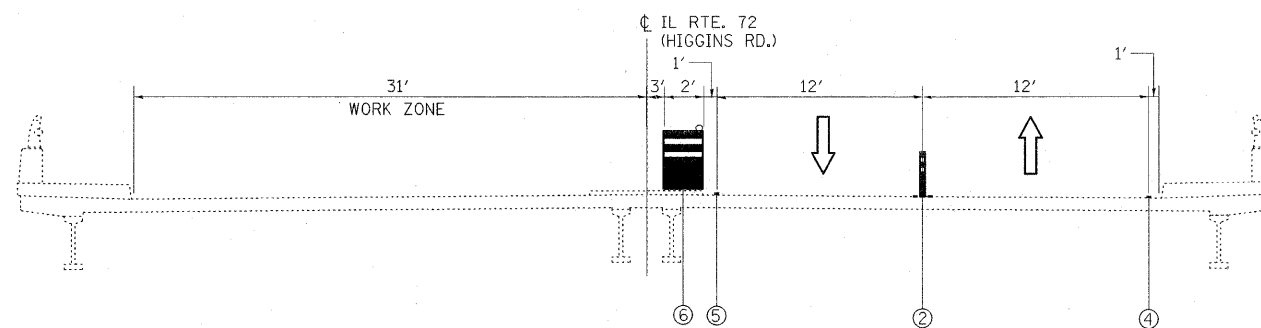
SCALE: 1"=50' SHEET NO. 5 OF 33 SHEETS STA. 104+00 TO STA. 117+00

F.A.U. RTE. 1350	SECTION 1292-I	COUNTY COOK	TOTAL SHEETS 33	SHEET NO. 5
CONTRACT NO. 60J57				
FED. ROAD DIST. NO. 1 ILLINOIS FED. AID PROJECT				



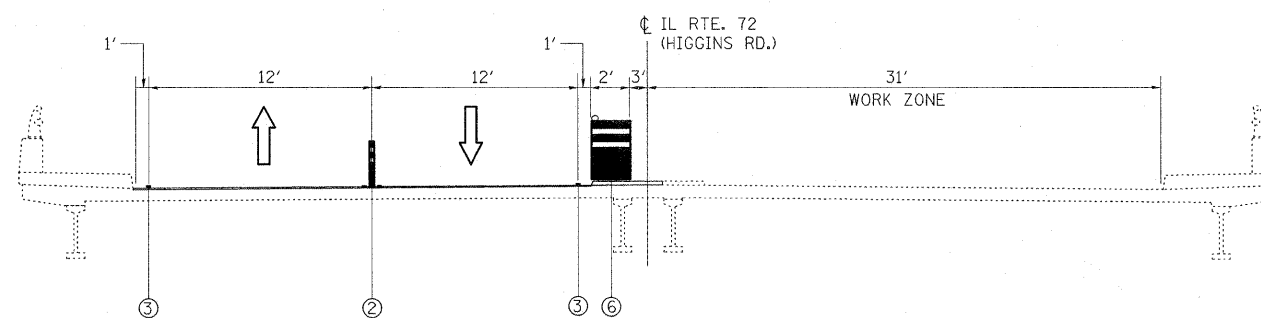
IL RTE. 72 - PRE-STAGE

(LOOKING EAST)



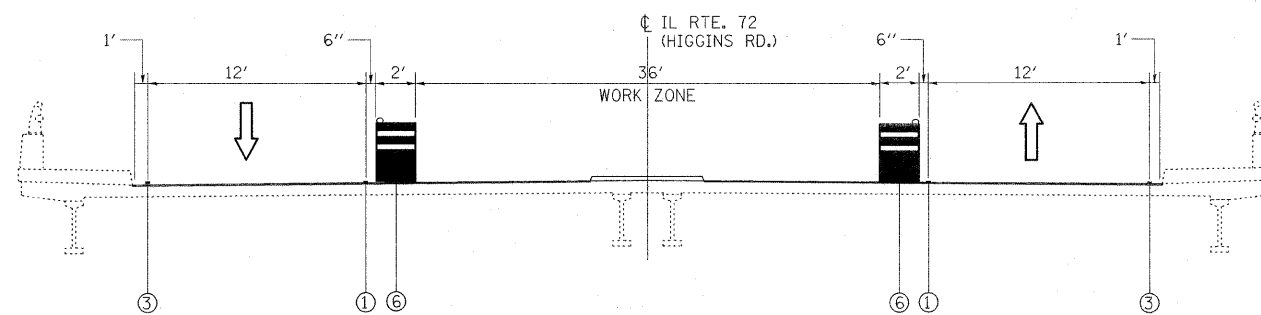
IL RTE. 72 - STAGE I

(LOOKING EAST)



IL RTE. 72 - STAGE II

(LOOKING EAST)



IL RTE. 72 - STAGE III

(LOOKING EAST)

PRE-STAGE

CONSTRUCTION:

- REMOVE CONCRETE MEDIAN SURFACE AND CONCRETE CURB AND GUTTER STA. 105+13 TO 108+20 AND REPLACE WITH TEMPORARY PAVEMENT TO BE FLUSH WITH ADJACENT PAVEMENT WITHIN THE LIMITS SHOWN
- REMOVE CONCRETE MEDIAN STA. 109+19 TO STA. 114+26 TO BE FLUSH WITH ADJACENT PAVEMENT WITHIN THE LIMITS SHOWN.
- REMOVE CONFLICTING MARKINGS AND IMPLEMENT STAGE I MOT PAVEMENT MARKINGS WITHIN THE WORK ZONE.

MAINTENANCE OF TRAFFIC:

- CLOSE INSIDE LANE IN BOTH DIRECTIONS PER THE MOT PLANS.
- CLOSURES ARE ANTICIPATED TO BE LIMITED TO OFF-PEAK HOURS, UNLESS OTHERWISE APPROVED BY THE ENGINEER.

STAGE I

CONSTRUCTION:

- PERFORM STRUCTURAL WORK ON NORTH HALF OF DECK AND ABUTMENTS.
- PARTIAL REMOVAL AND RESURFACING OF ROADWAY (TO PERMIT TRAFFIC FOR STAGE II WORK).
- REMOVE CONFLICTING MARKINGS AND IMPLEMENT STAGE II MOT PAVEMENT MARKINGS WITHIN THE WORK ZONE.

MAINTENANCE OF TRAFFIC:

- TRAFFIC REDUCED TO ONE LANE IN EACH DIRECTION, AND SHIFTED TO THE SOUTH SIDE OF THE EXISTING BRIDGE DECK.

STAGE II

CONSTRUCTION:

- PERFORM STRUCTURAL WORK ON SOUTH HALF OF DECK AND ABUTMENTS.
- PARTIAL REMOVAL AND RESURFACING OF ROADWAY (TO PERMIT TRAFFIC FOR STAGE III WORK).
- REMOVE CONFLICTING MARKINGS AND IMPLEMENT SHORT-TERM PAVEMENT MARKINGS.

MAINTENANCE OF TRAFFIC:

- TRAFFIC REDUCED TO ONE LANE IN EACH DIRECTION, AND SHIFTED TO THE NORTH SIDE OF THE REHABILITATED BRIDGE DECK.

STAGE III

CONSTRUCTION:

- REMOVE TEMPORARY PAVEMENT STA. 105+13 TO STA. 108+20 AND REPLACE CONCRETE CURB AND GUTTER AND CONCRETE MEDIAN SURFACE.
- RECONSTRUCT CONCRETE MEDIAN STA. 109+19 TO 114+26.
- APPLY BOTH SHORT-TERM AND PERMANENT PAVEMENT MARKINGS AND RAISED REFLECTIVE PAVEMENT MARKERS.

MAINTENANCE OF TRAFFIC:

- CLOSE INSIDE LANE IN BOTH DIRECTIONS PER THE MOT PLANS. ONCE MEDIAN HAS BEEN RECONSTRUCTED AND THERE ARE NO DROP-OFFS TO THE PAVEMENT, DAILY LANE CLOSURES PER STD. 701422 MAY BE USED.

SEE SHEET 2 FOR TRAFFIC CONTROL AND PROTECTION NOTES.

LEGEND

- ① TYPE III TEMPORARY PAVEMENT MARKING TAPE, FOR WET CONDITIONS, 4" SOLID YELLOW LINE (TYP)
- ② TYPE III TEMPORARY PAVEMENT MARKING TAPE, FOR WET CONDITIONS, 4" DOUBLE YELLOW LINE @ 11" O.C. (TYP) STA. 112+80 TO STA. 122+00 FLEXIBLE DELINEATORS
- ③ TYPE III TEMPORARY PAVEMENT MARKING TAPE, FOR WET CONDITIONS, 4" SOLID WHITE LINE (TYP)
- ④ EXISTING PAVEMENT MARKING, 4" SOLID WHITE LINE (TYP)
- ⑤ EXISTING PAVEMENT MARKING, 4" SOLID YELLOW LINE (TYP)
- ⑥ DRUM WITH STEADY BURN MONODIRECTIONAL LIGHT

PLOT DATE = 3/23/2010
 USER NAME = dweas
 MODEL = TjrSec

rjngroup
Excellence through Ownership

200 West Front Street
Wheaton, IL 60187

DESIGNED - MTH	REVISED Δ2/16/2010 IDOT COMMENTS
DRAWN - DJW	REVISED -
CHECKED - MAK	REVISED -
DATE - 3/23/2010 9:51:12 AM	REVISED -

STATE OF ILLINOIS
DEPARTMENT OF TRANSPORTATION

IL-72 OVER DESPLAINES RIVER
SN 016-0665

MAINTENANCE OF TRAFFIC
TYPICAL SECTIONS

F.A.J. RTE. 1350	SECTION 1292-1	COUNTY COOK	TOTAL SHEETS 33	SHEET NO. 8
CONTRACT NO. 60J57				
FED. ROAD DIST. NO. 1 ILLINOIS FED. AID PROJECT				

SCALE: NTS

SHEET NO. 8 OF 33 SHEETS

STA. TO STA.

FED. ROAD DIST. NO. 1 ILLINOIS FED. AID PROJECT