

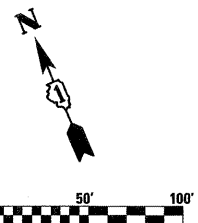
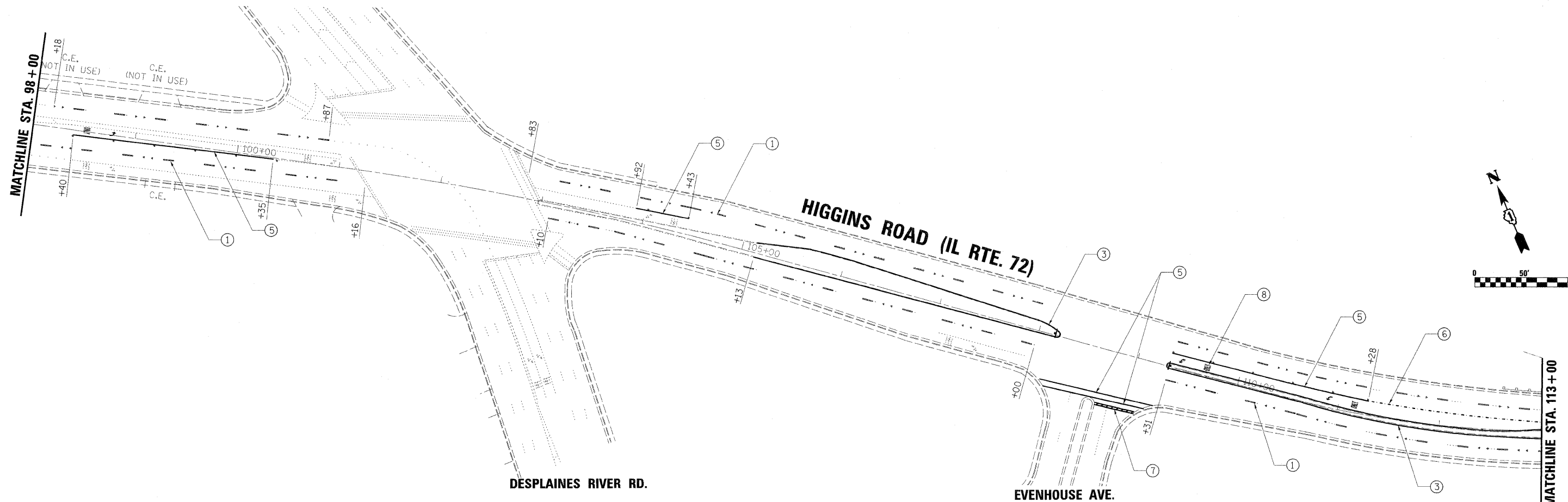
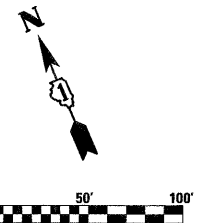
**PAVEMENT MARKING LEGEND**

- ① 4" WHITE LANE LINE, 30' SKIP, 10' DASH
- ② 4" WHITE SOLID LINE
- ③ 4" YELLOW SOLID LINE
- ④ 4" DOUBLE YELLOW CENTERLINE
- ⑤ 6" WHITE SOLID LINE
- ⑥ 6" WHITE DOTTED LINE, 6' SKIP, 2' DASH
- ⑦ 24" WHITE STOP BAR
- ⑧ LETTERS AND SYMBOLS, WHITE

**SYMBOLS LEGEND**

- ◁ ONE-WAY CRYSTAL MARKER
- ◄ ONE-WAY AMBER MARKER
- ◆ TWO-WAY AMBER MARKER

\*ALL PROPOSED PAVEMENT MARKING ON THIS SHEET REPRESENTS THERMOPLASTIC PAVEMENT MARKING



PLOT DATE = 1/25/2016  
 PLOT SCALE = 1/320  
 USER NAME = drcds  
 MODEL = Sheet 1



200 West Front Street  
Wheaton, IL 60187

DESIGNED - MTH	REVISED -
DRAWN - DJW	REVISED -
CHECKED - MAK	REVISED -
DATE - 1/28/2010 6:25:37 PM	REVISED -

**STATE OF ILLINOIS  
DEPARTMENT OF TRANSPORTATION**

**IL-72 OVER DESPLAINES RIVER  
SN 016-0665**

**PAVEMENT MARKING  
PLAN**

F.A.U. RTE. 1350	SECTION 1292-1	COUNTY COOK	TOTAL SHEETS 33	SHEET NO. 6
CONTRACT NO. 60J57				
FED. ROAD DIST. NO. 1 (ILLINOIS) FED. AID PROJECT				

SCALE: 1"=50' SHEET NO. 6 OF 33 SHEETS STA. 87+00 TO STA. 113+00