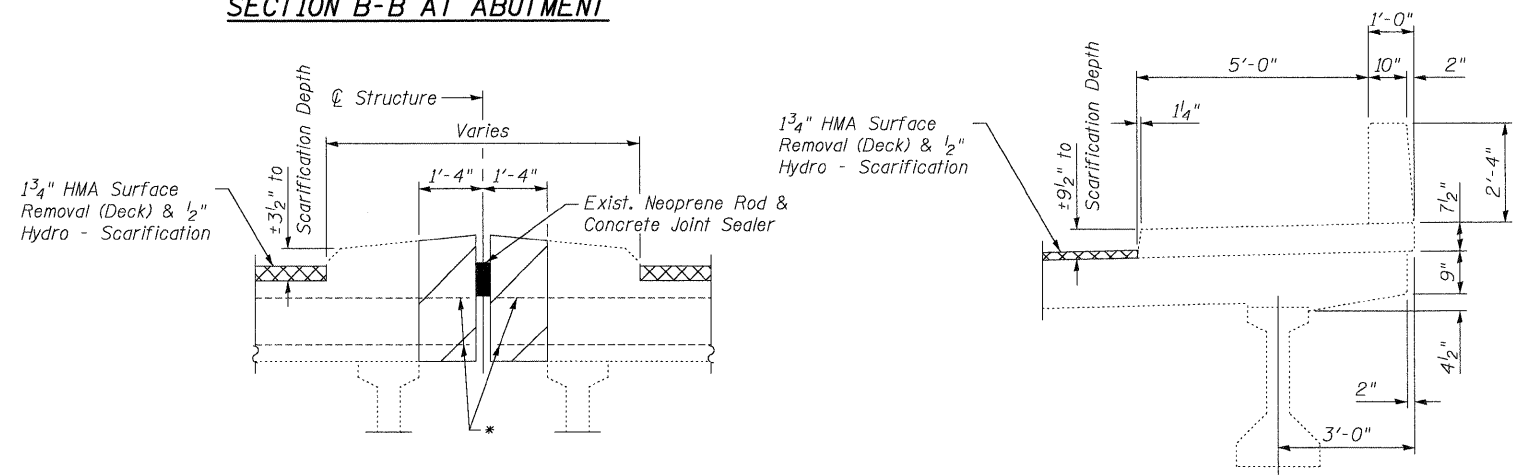
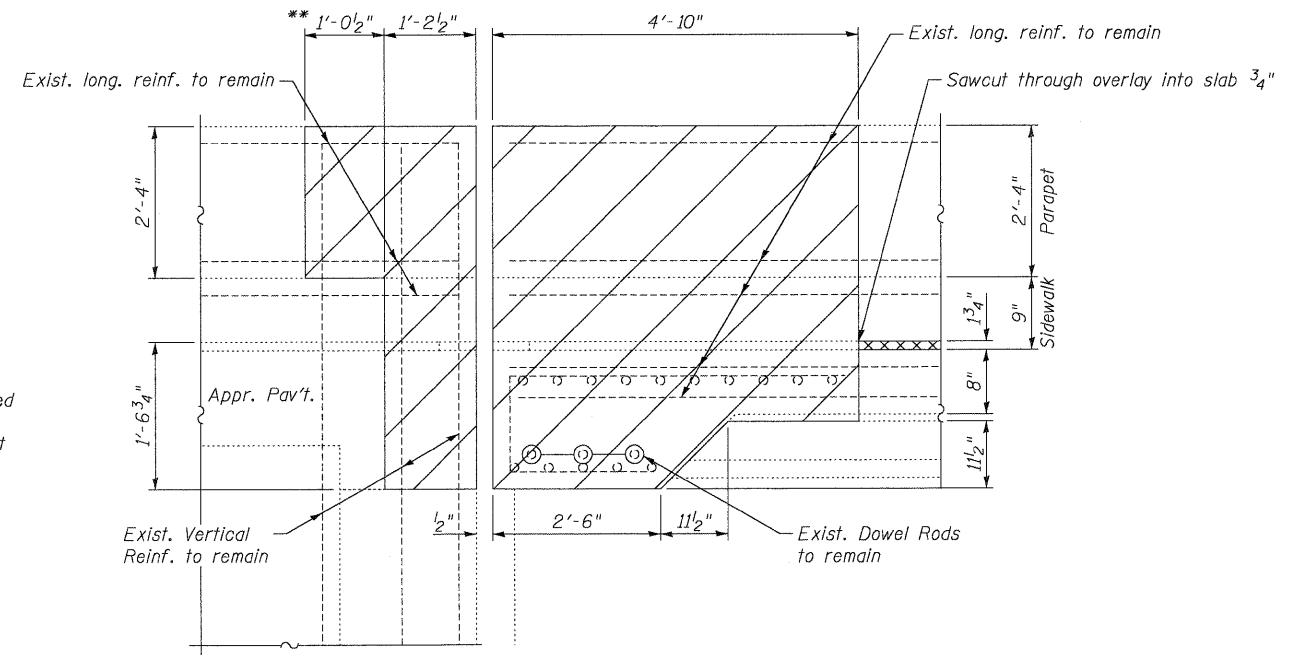


- * Existing transverse reinforcement in slab under median to remain.
- ** Additional wing wall parapet removal at N.W. & S.E. Corners.
- *** Existing rail post anchors located within the concrete removal area shall be removed and disposed of. The post shall be disconnected before concrete removal. New anchorage shall be cast into the proposed concrete as shown on sheet 6 of 9. The cost of the materials and labor for disconnection and reattachment of rail post is included with Concrete Removal.



- Notes:
- Hatched areas indicate Concrete Removal.
 - Existing reinforcement bars extending into the concrete removal areas shall be cleaned, straightened and incorporated into the new construction. Any reinforcement bars that are damaged during concrete removal shall be replaced with an approved bar splicer or anchorage system. Cost included with Concrete Removal.
 - Existing reinforcement bars in the concrete removal area parallel to the expansion joints shall be removed.
 - Removal and disposal of the existing Neoprene expansion joints, existing neoprene rod and existing concrete joint sealer, will not be paid for separately, but shall be included with the cost of Concrete Removal.
 - If existing name plate falls within the limits of Concrete Removal, it shall be removed and reinstalled in its original location in accordance with IDOT Std. 515001. Cost included with Concrete Superstructure.

CONCRETE REMOVAL DETAILS
STRUCTURE NO. 016-0665

PLOT DATE = 02/16/2010
 FILE NAME = \\s0160665-0157-003-concrete-removal.dgn
 USER NAME = CFC

Coombe-Bloxdorf P.C. - CIVIL ENGINEERS - - STRUCTURAL ENGINEERS - - LAND SURVEYORS - Design Firm License No. 184-002703	PROJECT NO. 07047-22 SCALE / / / DATE / / DESIGN BY MCB DRAWN BY CFC CHECKED BY MCB	SHEET NO. 3 9 SHEETS	F.A.U. RTE. 1350 SECTION 1292-1	COUNTY COOK CONTRACT NO. 60J57	TOTAL SHEETS 33 SHEET NO. 19
	FED. ROAD DIST. NO. ILLINOIS FED. AID PROJECT				