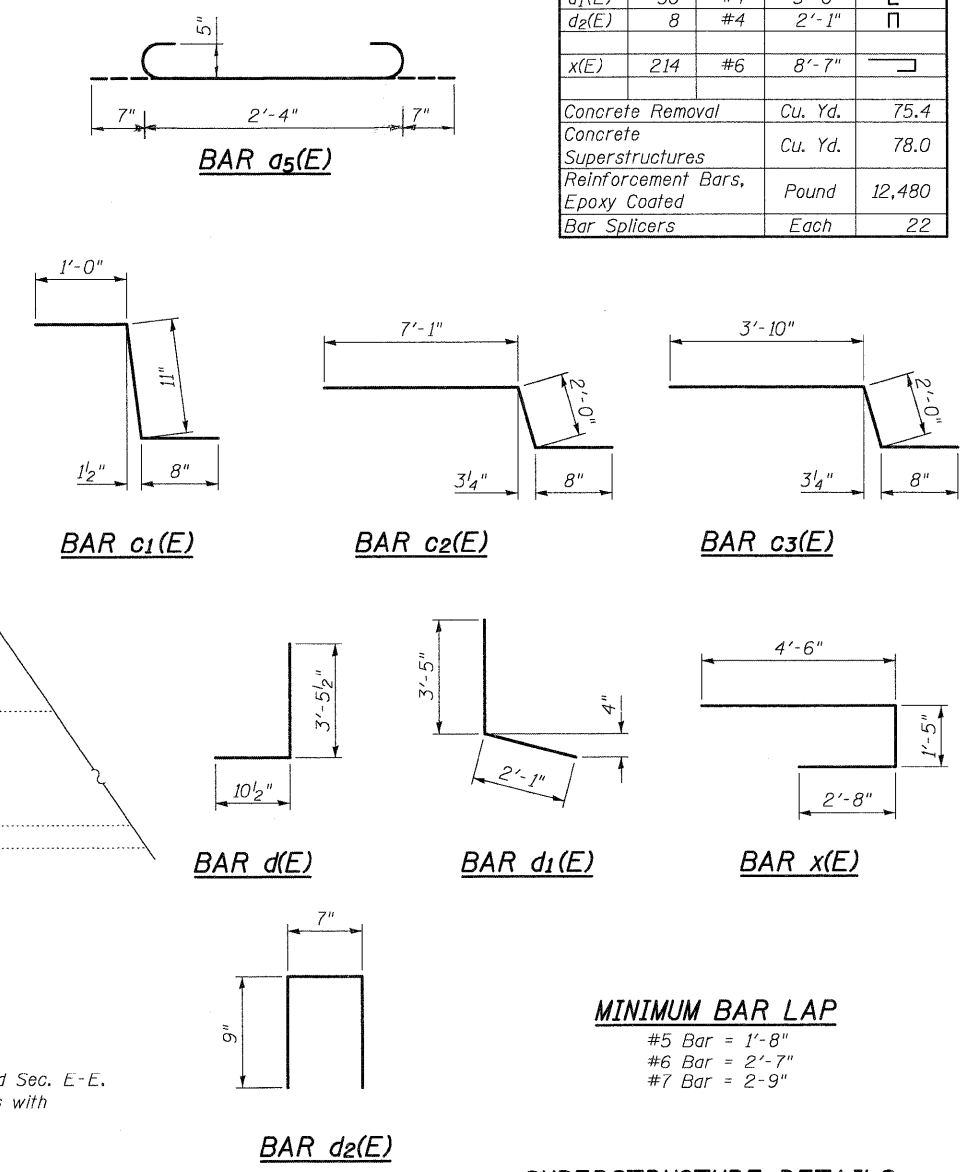
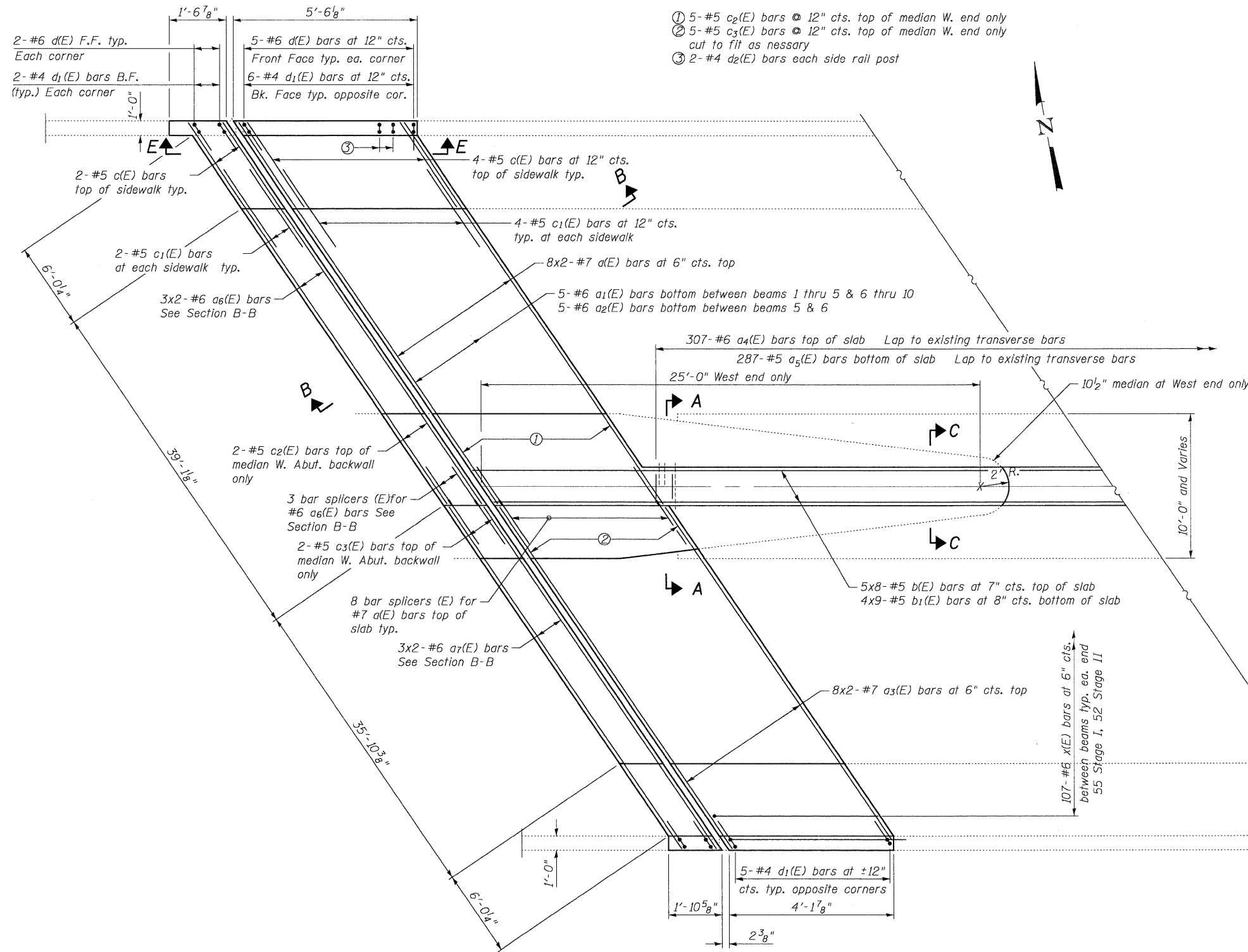


**BILL OF MATERIAL**

| Bar                              | No. | Size    | Length  | Shape |
|----------------------------------|-----|---------|---------|-------|
| a(E)                             | 32  | #7      | 24'-5"  | —     |
| a1(E)                            | 80  | #6      | 7'-8"   | —     |
| a2(E)                            | 10  | #6      | 2'-10"  | —     |
| a3(E)                            | 32  | #7      | 22'-10" | —     |
| a4(E)                            | 307 | #6      | 2'-4"   | —     |
| a5(E)                            | 287 | #5      | 3'-6"   | —     |
| a6(E)                            | 12  | #6      | 24'-4"  | —     |
| a7(E)                            | 12  | #6      | 22'-9"  | —     |
| b(E)                             | 40  | #5      | 26'-7"  | —     |
| b1(E)                            | 36  | #5      | 23'-10" | —     |
| c(E)                             | 24  | #5      | 6'-11"  | —     |
| c1(E)                            | 24  | #5      | 2'-7"   | —     |
| c2(E)                            | 7   | #5      | 9'-9"   | —     |
| c3(E)                            | 7   | #5      | 6'-6"   | —     |
| d(E)                             | 28  | #6      | 4'-4"   | J     |
| d1(E)                            | 30  | #4      | 5'-6"   | L     |
| d2(E)                            | 8   | #4      | 2'-1"   | Π     |
| x(E)                             | 214 | #6      | 8'-7"   | —     |
| Concrete Removal                 |     | Cu. Yd. | 75.4    |       |
| Concrete Superstructures         |     | Cu. Yd. | 78.0    |       |
| Reinforcement Bars, Epoxy Coated |     | Pound   | 12,480  |       |
| Bar Splicers                     |     | Each    | 22      |       |



**Notes:**  
 See sheet 6 of 9 for Sec. A-A, Sec. B-B, Sec. C-C, and Sec. E-E.  
 Bars indicated thus 5x8-#5 etc. indicates 5 lines of bars with 8 lengths per line.  
 See sheet 9 of 9 for Bar Splicer details.

**SUPERSTRUCTURE DETAILS  
 STRUCTURE NO. 016-0665**

|   |  |                         |   |                                 |
|---|--|-------------------------|---|---------------------------------|
| <p><b>Coombe-Bloxdorf P.C.</b><br/>         - CIVIL ENGINEERS -<br/>         - STRUCTURAL ENGINEERS -<br/>         - LAND SURVEYORS -<br/>         Design Firm License No. 184-002703</p> | PROJECT NO. 07047-22<br>SCALE /<br>DATE / /<br>DESIGN BY MCB<br>DRAWN BY CFC<br>CHECKED BY MCB | SHEET NO. 5<br>9 SHEETS | F.A.U. RTE. 1350<br>SECTION 1292-0<br>COUNTY COOK<br>CONTRACT NO. 60J57 | TOTAL SHEETS 33<br>SHEET NO. 21 |
|   | FEDERAL ROAD DIST. NO. ILLINOIS FED. AID PROJECT   |                         |   |                                 |
|   |  |                         |   |                                 |
|   |  |                         |   |                                 |

PLOT DATE = 02/16/2010  
 FILE NAME = \\0160665-60J57-005-superstructure-details.dgn  
 USER NAME = CFC