

STATE OF ILLINOIS  
DEPARTMENT OF TRANSPORTATION  
DIVISION OF HIGHWAYS

**PROPOSED  
HIGHWAY PLANS**

F.A.P. ROUTE 303 (IL. RTE. 173)  
0.1 MILE EAST OF I-94 TO 0.1 MILE WEST OF IL. 131  
SECTION 136RS-6  
RESURFACING (3P)

LAKE COUNTY  
C-91-255-10

F.A.P. RTE.	SECTION	COUNTY	TOTAL SHEETS	SHEET NO.
303	136RS-6	LAKE	28	1
		ILLINOIS	CONTRACT NO. 60J65	

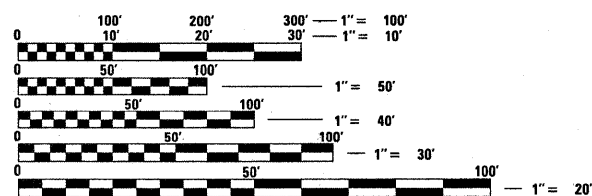
D-91-255-10

FOR INDEX OF SHEETS, SEE SHEET NO. 2

IMPROVEMENT IS LOCATED IN THE VILLAGE OF WADSWORTH



LOCATION OF SECTION INDICATED THIS: — ■ —

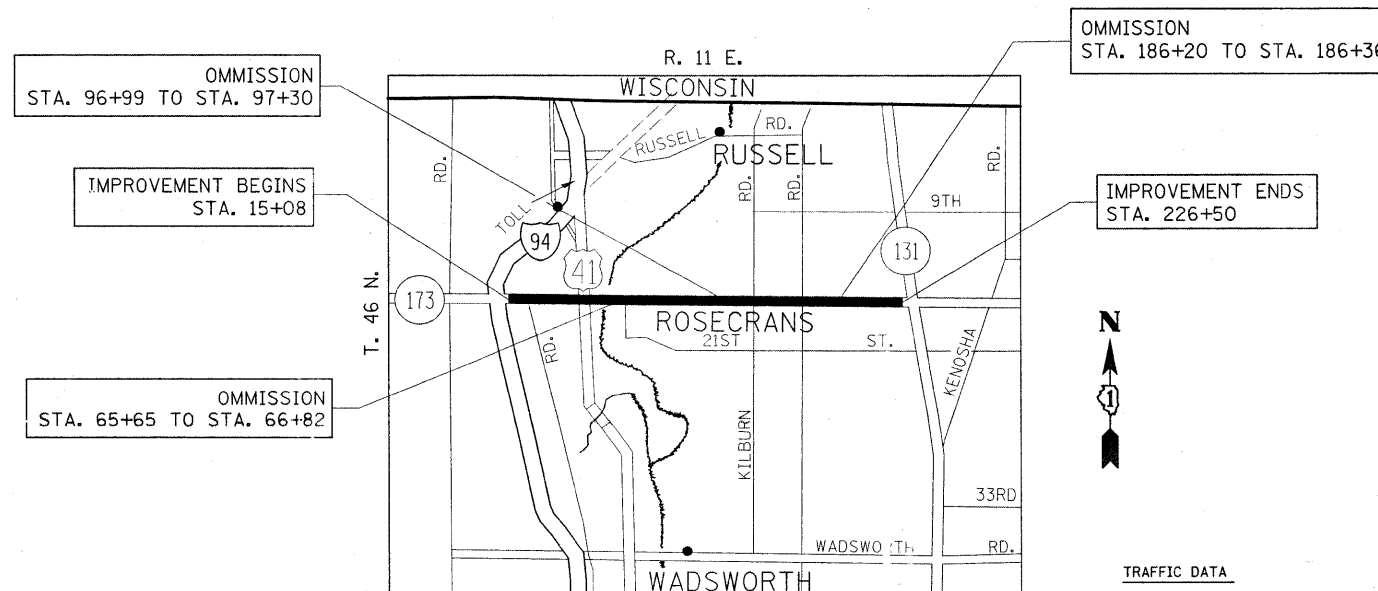


FULL SIZE PLANS HAVE BEEN PREPARED USING STANDARD ENGINEERING SCALES. REDUCED SIZED PLANS WILL NOT CONFORM TO STANDARD SCALES. IN MAKING MEASUREMENTS ON REDUCED PLANS, THE ABOVE SCALES MAY BE USED.

J.U.L.I.E.  
JOINT UTILITY LOCATION INFORMATION FOR EXCAVATION  
1-800-892-0123  
OR 811

PROJECT ENGINEER JENPAI CHANG 847-705-4432  
PROJECT MANAGER KEN ENG

CONTRACT NO. 60J65



LOCATION MAP

GROSS LENGTH = 21,142 FT. = 4.00 MILE  
NET LENGTH = 20,978 FT. = 3.97 MILE



TRAFFIC DATA  
2007 ADT = 12,800  
SPEED LIMIT = 45-55 MPH

STATE OF ILLINOIS  
DEPARTMENT OF TRANSPORTATION  
DIVISION OF HIGHWAYS

SUBMITTED JANUARY 20, 2010

*Diane M. O'Keefe*  
DEPUTY DIRECTOR OF HIGHWAYS, REGION ENGINEER

March 19, 2010  
*Scott E. Stitt, P.E.*  
Acting ENGINEER OF DESIGN AND ENVIRONMENT

March 19, 2010  
*Christine M. Reed*  
DIRECTOR OF HIGHWAYS, CHIEF ENGINEER

PRINTED BY THE AUTHORITY  
OF THE STATE OF ILLINOIS

DISTRICT 1 DESIGN PLAN PREPARATION ENGINEER: KEN ENG / JENPAI CHANG (847) 705-4432