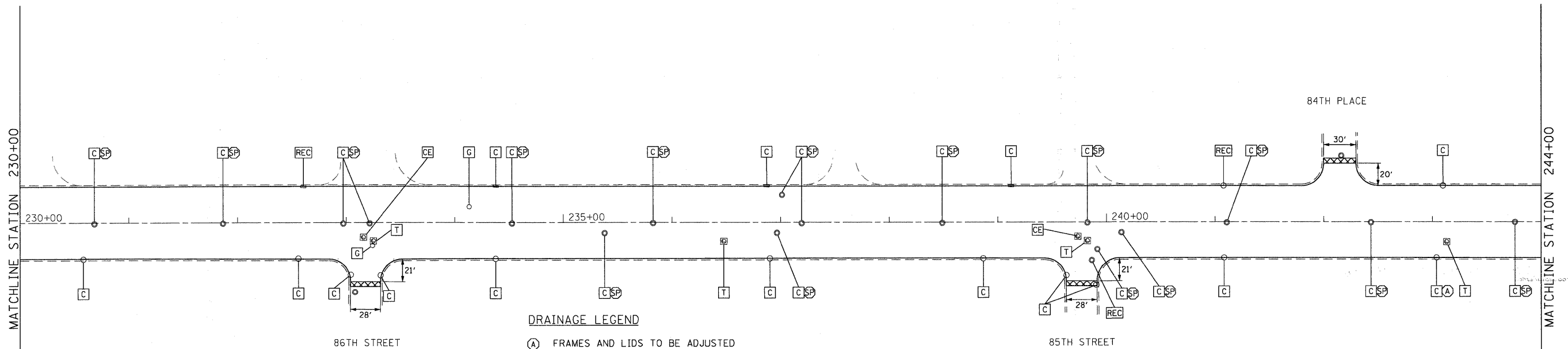
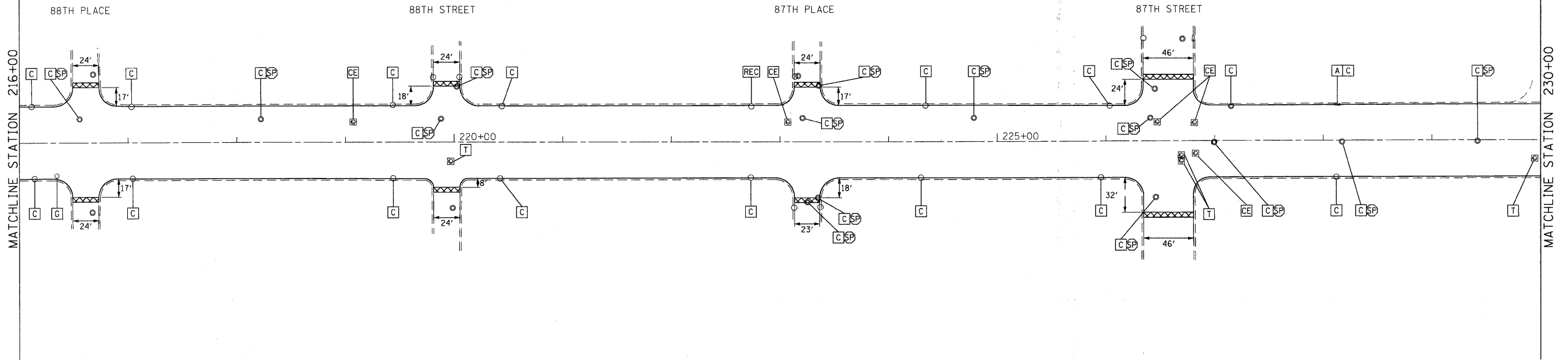



HMA SURFACE REMOVAL -2 1/2"
RESURFACE WITH:
POLYMERIZED LEVELING BINDER (MACHINE METHOD), IL-4.75, N50 -3/4"
POLYMERIZED HMA SURFACE COURSE, MIX F, N90 (IL-9.5MM) -1 3/4"



ROADWAY LEGEND

 PROPOSED HMA SURFACE REMOVAL BUTT JOINT
SEE BUTT JOINTS AND HMA TAPER DETAILS (BD32)

DRAINAGE LEGEND

- (A) FRAMES AND LIDS TO BE ADJUSTED
- (A) FRAMES AND GRATES TO BE ADJUSTED
- (C) STRUCTURE TO BE CLEANED
- (SP) FRAMES AND LIDS TO BE ADJUSTED SPECIAL
- (REC) STRUCTURE TO BE RECONSTRUCTED
- (T) TELEPHONE-TO BE ADJUSTED BY OTHERS
- (CE) COM ED-TO BE ADJUSTED BY OTHERS
- (G) GAS TO BE ADJUSTED BY OTHERS

NOTES

1. REFER TO TYPICAL SECTIONS FOR LOCATIONS AND DISTRICT ONE (BD33)
(HMA TAPER AT EDGE OF PCC PAVEMENT).
2. REBUILD EXISTING HANDHOLE TO HEAVY DUTY HANDHOLE.
3. REBUILD EXISTING HANDHOLE.

FILE NAME : F:\2009\ME09006\Var\PH\CADD\W011.CottageGr\Sh\0168\68-shr-pln-02.dgn
 PLOT SCALE = 50.0000' / IN.
 USER NAME = Millennium Professional Services



200 22ND Street, Suite 216, Lombard, IL 60148
630.785.0110 voice, 630.839.2566 fax
WWW.MPS-IL.COM

MILLENNIA PROFESSIONAL SERVICES

DESIGNED	CJD	REVISED	
DRAWN	CJD	REVISED	
CHECKED	RPD	REVISED	
DATE	2/15/2010	REVISED	

**STATE OF ILLINOIS
DEPARTMENT OF TRANSPORTATION**

**COTTAGE GROVE AVENUE
83RD STREET TO 92ND STREET**

ROADWAY PLAN

SCALE: 1"=50' SHEET NO. OF SHEETS STA. 216+00 TO STA. 244+00

F.A.U. RTE.	SECTION	COUNTY	TOTAL SHEETS	SHEET NO.
2919	2009-118 RS	COOK	29	7

FED. ROAD DIST. NO. 1 ILLINOIS FED. AID PROJECT CONTRACT NO. 60J68

PLN-02

F:\2009\ME09006\Var\PH\CADD\W011.CottageGr\Sh\0168\68-shr-pln-02.dgn