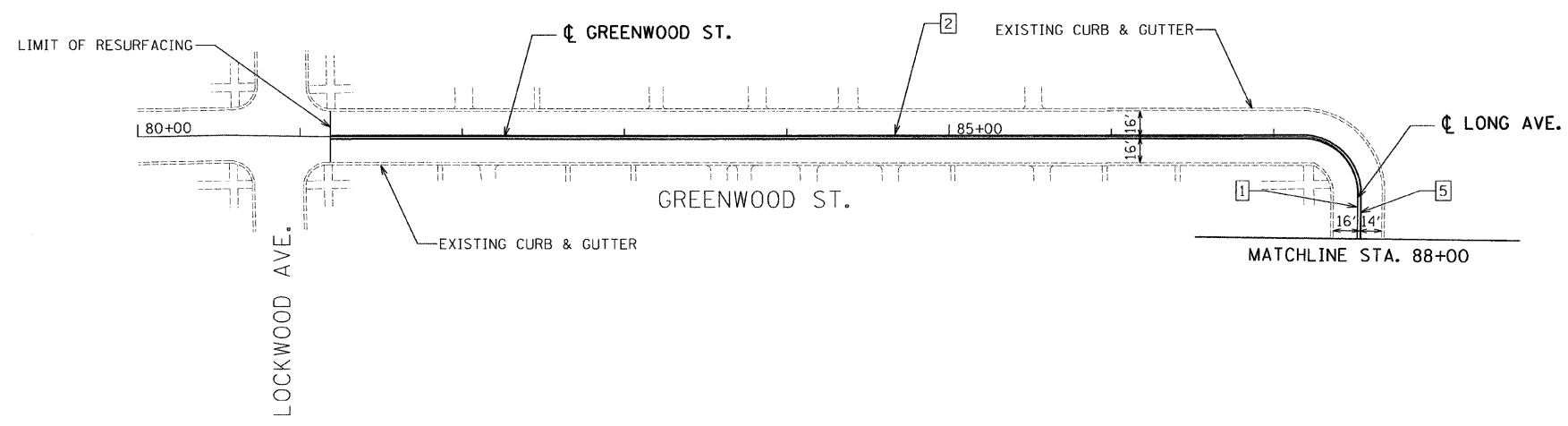
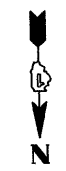


LEGEND

- | | |
|---|---|
| <p>1 THERMOPLASTIC PAVEMENT MARKING - LINE 4" YELLOW 10' DASH, 30' SKIP</p> <p>2 THERMOPLASTIC PAVEMENT MARKING - LINE 4" YELLOW DOUBLE CENTER LINE</p> <p>3 THERMOPLASTIC PAVEMENT MARKING - LINE 4" WHITE</p> | <p>5 THERMOPLASTIC PAVEMENT MARKING - LINE 4" YELLOW</p> <p>6 THERMOPLASTIC PAVEMENT MARKING - LINE 6" WHITE</p> <p>7 THERMOPLASTIC PAVEMENT MARKING - LINE 24" WHITE</p> |
|---|---|



n:\proj2009\2009\3023-24\res\1110\sign\08\0168175-sht-plan.dgn

FILE NAME =	USER NAME = _USER_	DESIGNED - AR	REVISED - EF 02-09-2010	STATE OF ILLINOIS DEPARTMENT OF TRANSPORTATION	I-94 FRONTAGE ROAD - WILLOW TO TOUHY ROADWAY AND PAVEMENT MARKING PLANS			F.A.U. RTE.	SECTION	COUNTY	TOTAL SHEETS	SHEET NO.	
	PLOT SCALE = 50.0045' / IN.	DRAWN - AR	REVISED -		94	2009-121-RS	COOK	25	11				
	PLOT DATE = 2/9/2010	CHECKED - PJ	REVISED -		SCALE: 50			SHEET NO. OF SHEETS		STA. TO STA.		CONTRACT NO. 60J75	
		DATE - 01/29/2010	REVISED -		ILLINOIS FED. AID PROJECT								