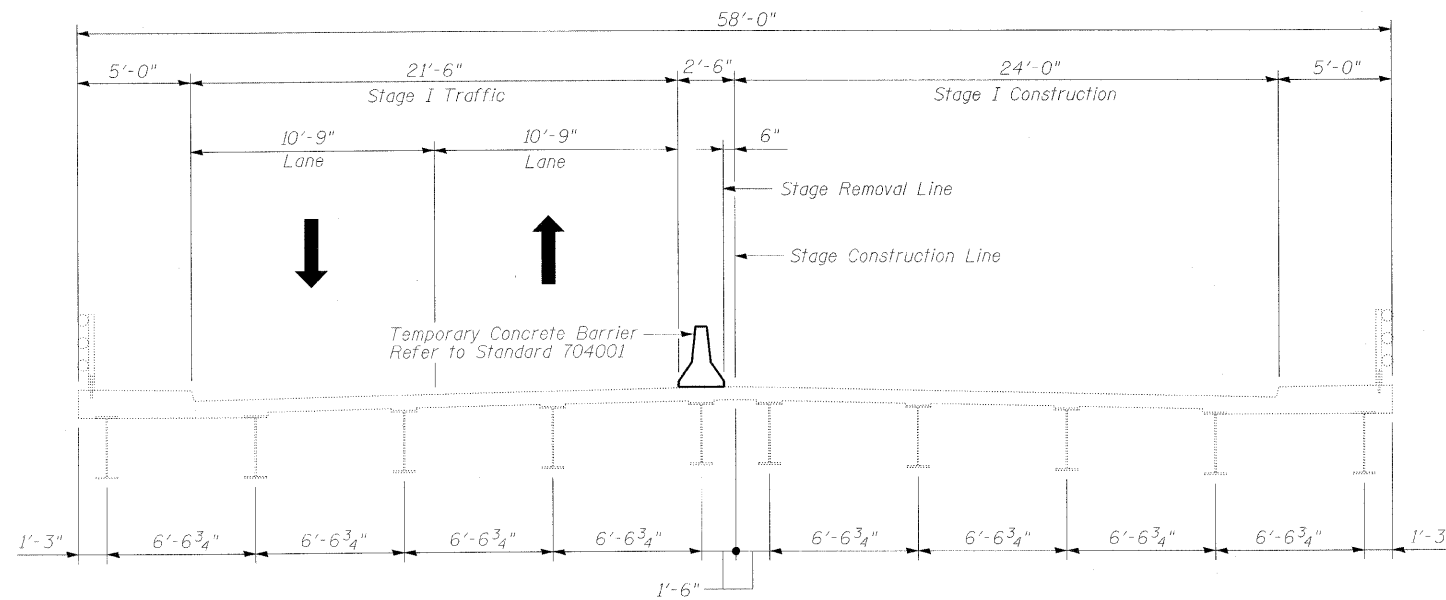
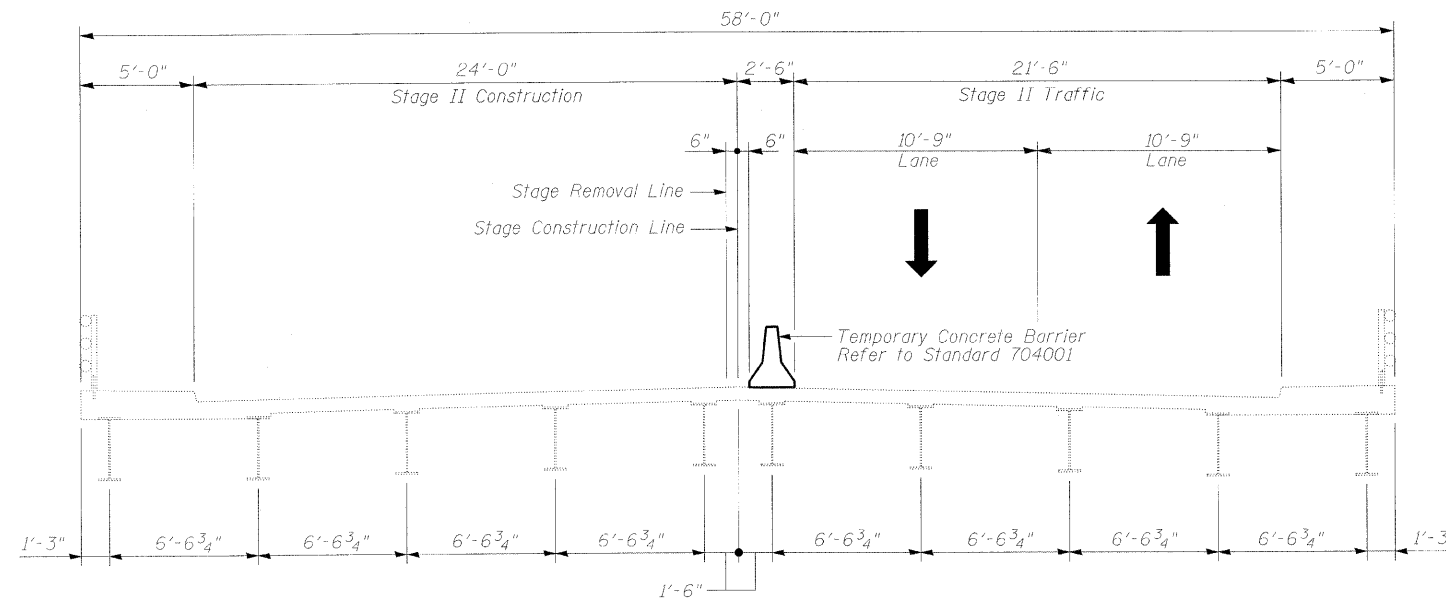


STATE OF ILLINOIS  
DEPARTMENT OF TRANSPORTATION



STAGE I CROSS SECTION  
LOOKING EAST



STAGE II CROSS SECTION  
LOOKING EAST

*Note:*

For Quantity of Temporary Concrete Barrier refer to Summary of Quantities.

STAGE CONSTRUCTION DETAILS  
STRUCTURE NO. 016-0919

DESIGNED <i>JWK</i>	<u>January, 2010</u>
CHECKED <i>JMH</i>	EXAMINED _____
DRAWN <i>TWR</i>	ENGINEER OF STRUCTURAL SERVICES
CHECKED <i>JMH</i>	PASSED _____
	ENGINEER OF BRIDGES AND STRUCTURES

SHEET NO. S3 OF S6 SHEETS	F.A.U. RTE.	SECTION	COUNTY	TOTAL SHEETS	SHEET NO.
	1631	2009-1231	COOK	12	7
			CONTRACT NO. 60J77		
ILLINOIS FED. AID PROJECT					