

F.A.U. RTE.	SECTION	COUNTY	TOTAL SHEETS	SHEET NO.
2678	163 HB-1-1	DuPage	31	1
FED. ROAD DIST. NO.		ILLINOIS	CONTRACT NO. 60J85	

D-91-275-10

STATE OF ILLINOIS
DEPARTMENT OF TRANSPORTATION
DIVISION OF HIGHWAYS

**PLANS FOR PROPOSED
FEDERAL AID HIGHWAY**

**(F.A.U. ROUTE 2678) YORK ROAD
OVER (IL ROUTE 38) (1.5 MI EAST OF ILL 83)
SECTION: 163 HB-1-1
DUPAGE COUNTY
C-91-275-10
BRIDGE REHABILITATION PROJECT: NHF-0347(024)
SN 022-0067**

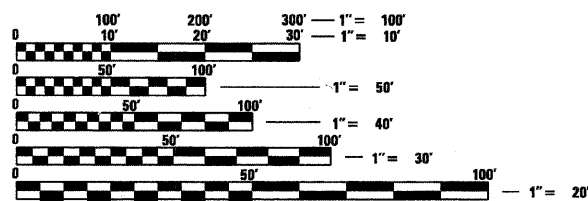


PROJECT LOCATED IN THE CITY OF
ELMHURST, DUPAGE COUNTY, ILLINOIS

FOR INDEX OF SHEETS, SEE SHEET NO. 2

DESIGN DESIGNATION
OTHER PRINCIPAL ARTERIAL

ADT 19500 (2005)
POSTED SPEED LIMIT 45 MPH

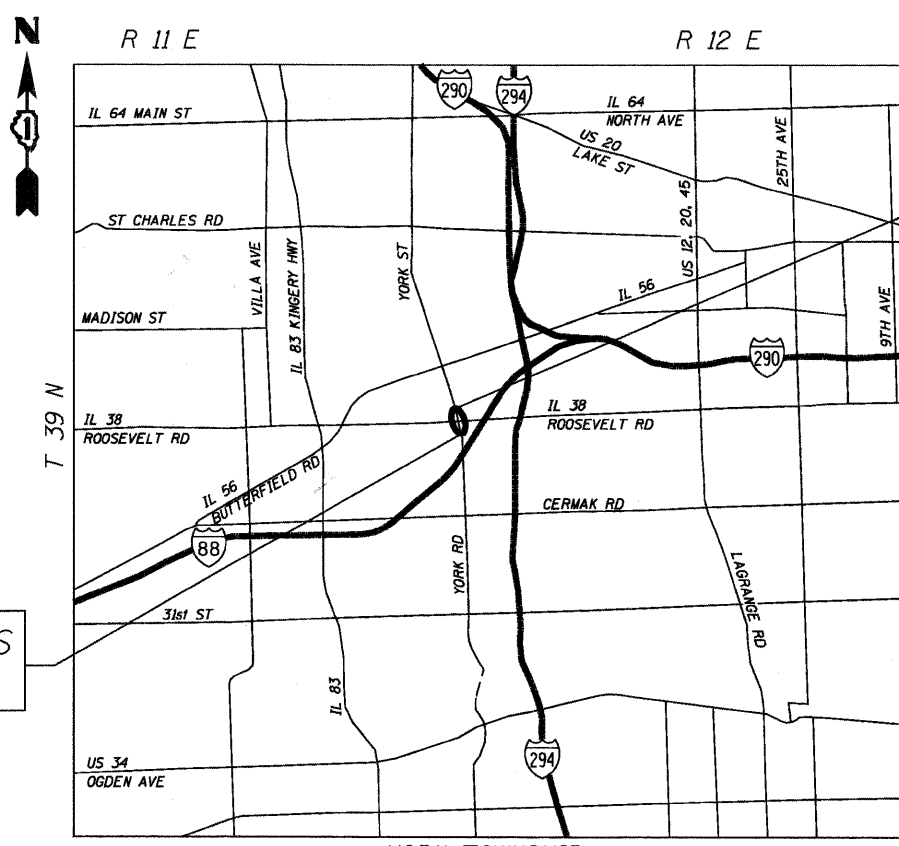


FULL SIZE PLANS HAVE BEEN PREPARED USING STANDARD ENGINEERING SCALES. REDUCED SIZED PLANS WILL NOT CONFORM TO STANDARD SCALES. IN MAKING MEASUREMENTS ON REDUCED PLANS, THE ABOVE SCALES MAY BE USED.

J.U.I.E.
JOINT UTILITY LOCATION INFORMATION FOR EXCAVATION
1-800-892-0123
OR 811

PROJECT MANAGER: KIM HARVEY (847) 705-4055
PROJECT ENGINEER: ERSKINE W. KLYCE (847) 705-4594

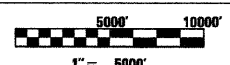
CONTRACT NO. 60J85



PROJECT BEGINS
STA. 58+35

PROJECT ENDS
STA. 61+67

LOCATION MAP



NET AND GROSS LENGTH OF PROJECT = 332' = 0.063 MI

STATE OF ILLINOIS
DEPARTMENT OF TRANSPORTATION
DIVISION OF HIGHWAYS

SUBMITTED JANUARY 28, 2010

Diane M. O'Keefe
DEPUTY DIRECTOR OF HIGHWAYS, REGION ENGINEER

March 9, 2010
Scott E. Still, P.E.
ACTING ENGINEER OF DESIGN AND ENVIRONMENT

March 9, 2010
Christine M. Road
DIRECTOR OF HIGHWAYS, CHIEF ENGINEER

PRINTED BY THE AUTHORITY
OF THE STATE OF ILLINOIS

LONGO, INC.
CONSULTING ENGINEERS
1560 WALL ST., SUITE 222
NAPERVILLE, ILLINOIS 60563 PH: (630) 577-9100

Walt
REGISTERED PROFESSIONAL ENGINEER
ILLINOIS
Exp. 11/30/11