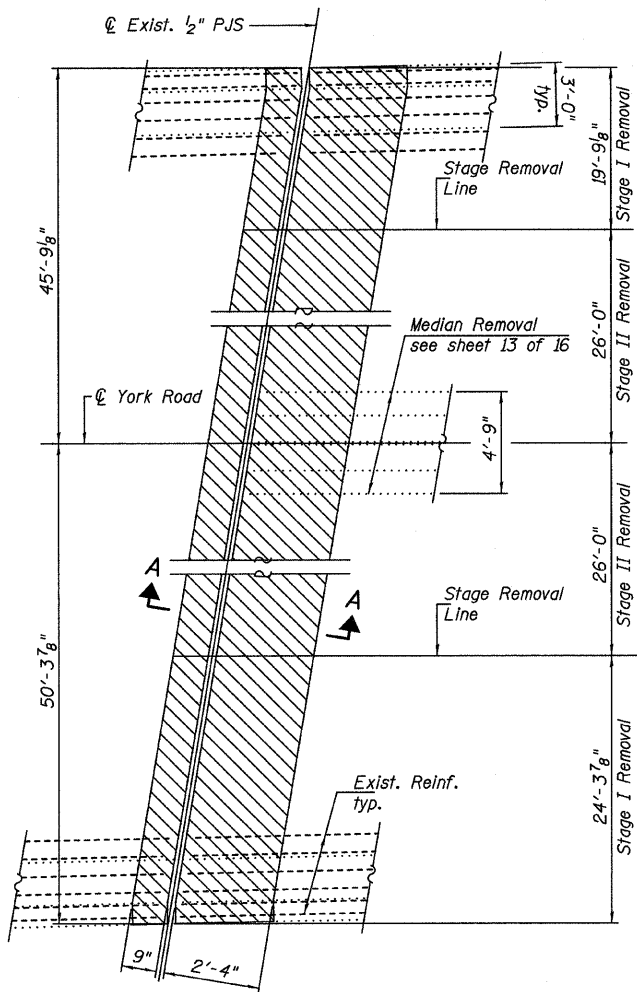
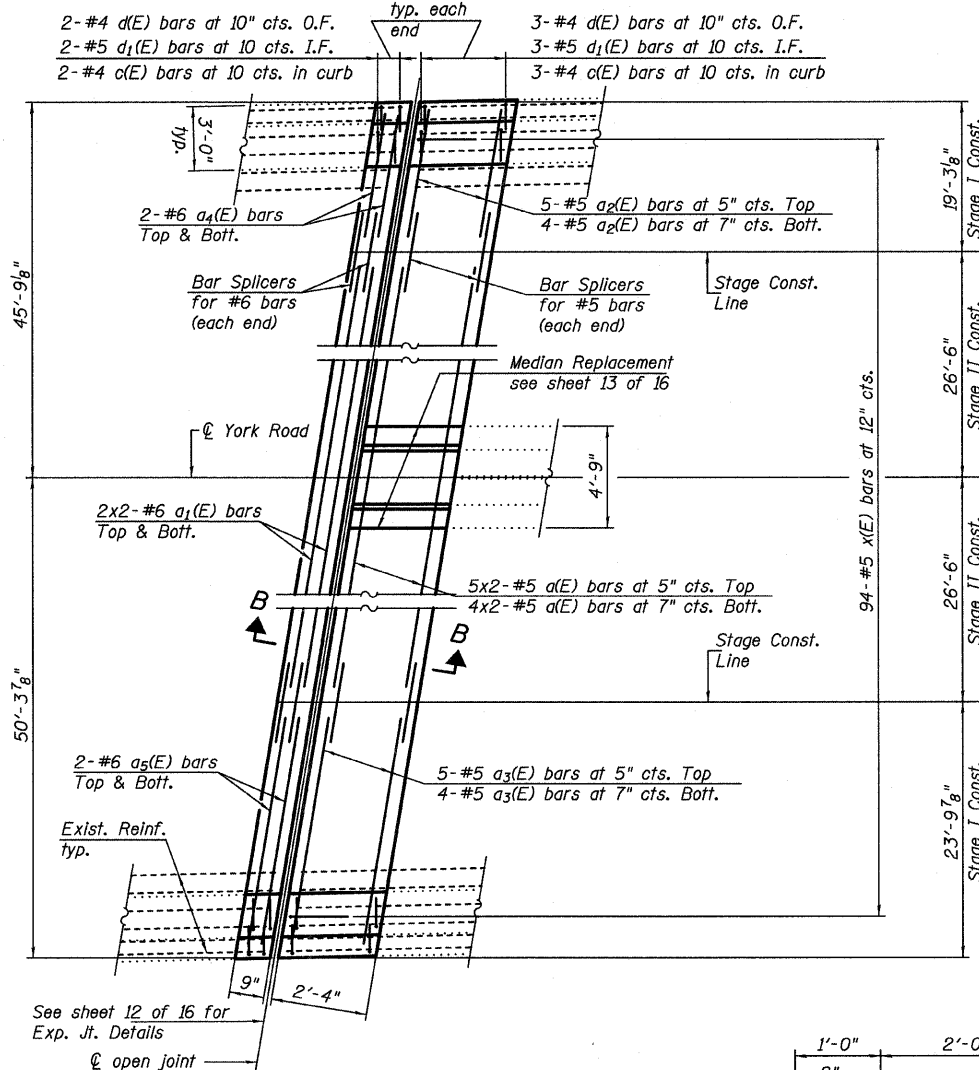


STATE OF ILLINOIS
DEPARTMENT OF TRANSPORTATION



PARTIAL PLAN SHOWING CONCRETE REMOVAL AT SOUTH ABUTMENT

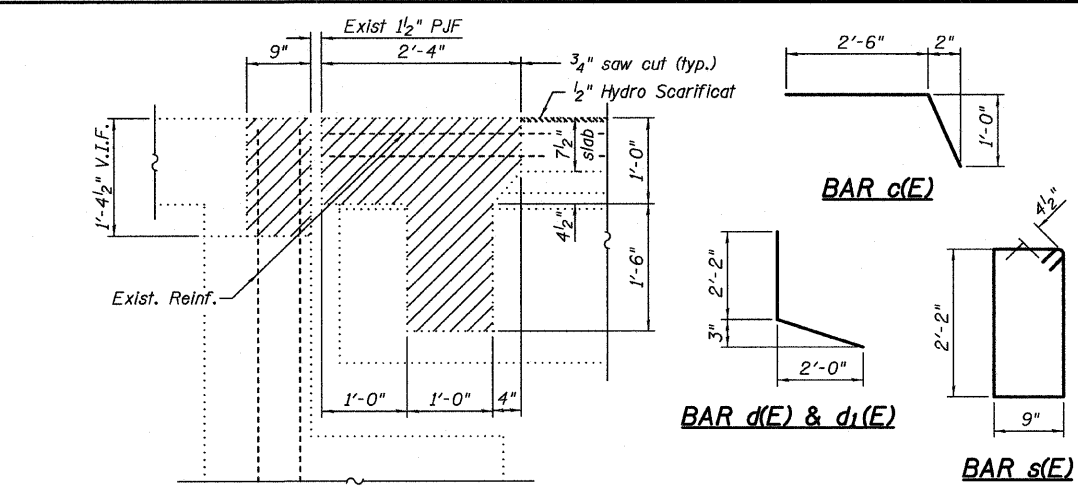


PARTIAL PLAN SHOWING CONCRETE REPLACEMENT AT SOUTH ABUTMENT

Notes:
Hatched areas indicate concrete sections to be removed and replaced. Perimeters at concrete removal areas shall be saw cut 3/4\"/>

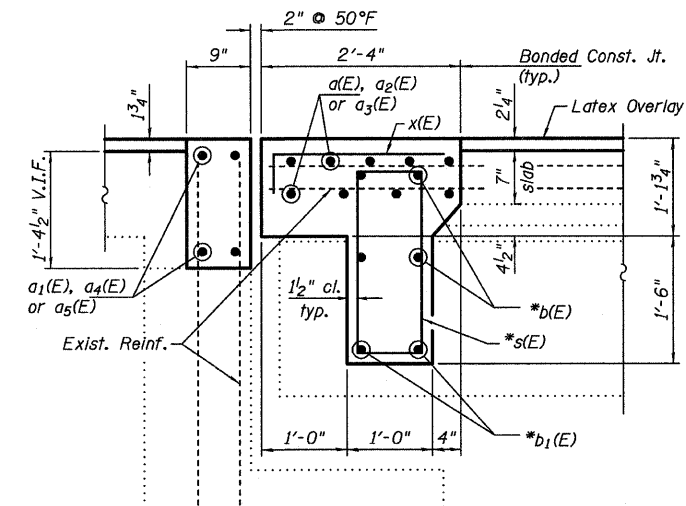
DESIGNED - CMV
CHECKED - SDS
DRAWN - DLH
CHECKED - CMV

WHKS & CO.
ENGINEERING
7018 KINGSMILL CT.,
SPRINGFIELD, IL
(217) 483-9457
DESIGN FIRM #184001036



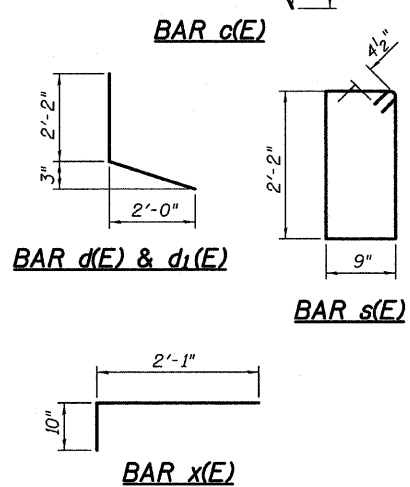
SECTION A-A

Note: Contractor must exercise extreme care while doing concrete removal in this area as to not damage the PPC I-Beams. Any damage is to be repaired at the Contractor's expense.



SECTION B-B

* (See sheet 11 of 16 for diaphragm details)



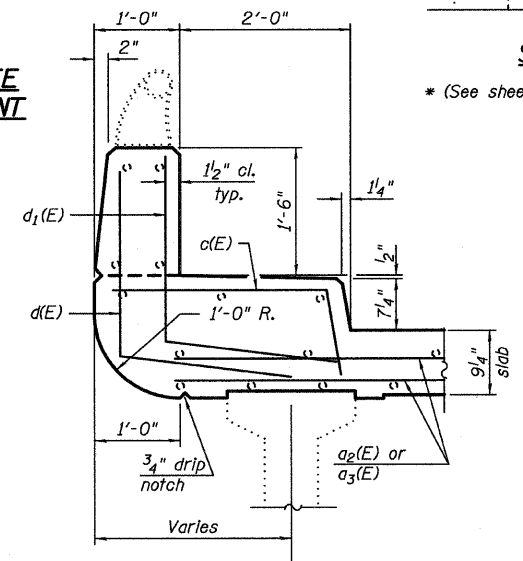
BILL OF MATERIAL

Bar	No.	Size	Length	Shape
a(E)	18	#5	29'-9"	—
a1(E)	8	#6	30'-3"	—
a2(E)	9	#5	18'-4"	—
a3(E)	9	#5	23'-0"	—
a4(E)	4	#6	19'-3"	—
a5(E)	4	#6	23'-10"	—
b(E)	60	#4	4'-6"	—
b1(E)	30	#6	4'-6"	—
c(E)	10	#4	3'-6"	┌
d(E)	10	#4	4'-2"	┌
d1(E)	10	#5	4'-2"	┌
s(E)	75	#4	6'-7"	□
x(E)	94	#5	2'-11"	┌
Concrete Removal		Cu. Yd.	17.9	
Concrete Superstructure		Cu. Yd.	19.5	
Bar Splicers		Each	26	
Reinforcement Bars, Epoxy Coated		Pound	2,670	

Bars labeled thus 4x2-#5 etc. indicate 4 lines of bars with 2 lengths per line.

(Sheet 1 of 5)

SOUTH ABUTMENT JOINT REPLACEMENT
F.A.U. RTE. 2678 (YORK ROAD) OVER
F.A.P. RTE. 347 (IL RTE. 38 - ROOSEVELT ROAD)
SECTION 163 HB-I-1
DUPAGE COUNTY
STATION 621+01.69
STRUCTURE NO. 022-0067



PARAPET SECTION

SHEET NO. 6 16 SHEETS	F.A.U. RTE. 2678	SECTION 163 HB-I-1	COUNTY DUPAGE	TOTAL SHEETS 31	SHEET NO. 16
	C-91-275-10		CONTRACT NO. 60J85		

ILLINOIS FED. AID PROJECT