

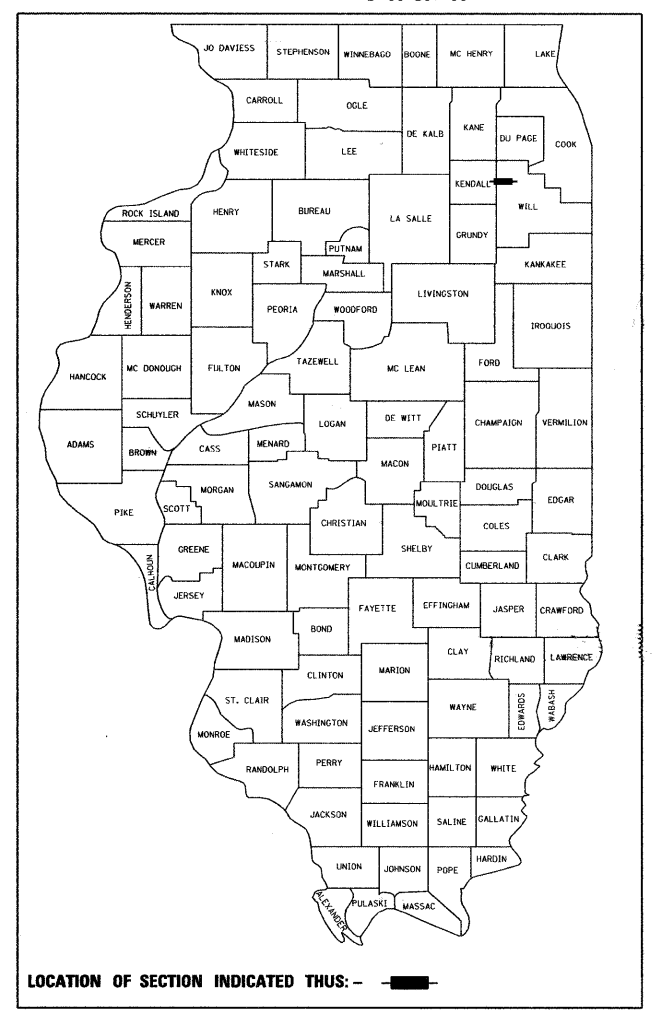
F.A.U. RTE.	SECTION	COUNTY	TOTAL SHEETS	SHEET NO.
0379	119 RS-14	WILL	20	1
FED. ROAD DIST. NO. 1	ILLINOIS	CONTRACT NO. 60J95		

D-91-317-10

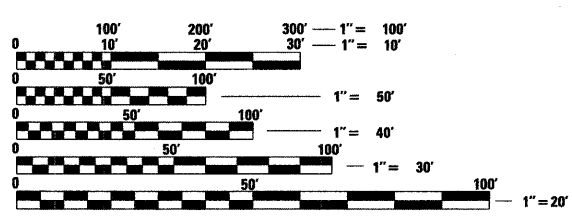
**STATE OF ILLINOIS**  
**DEPARTMENT OF TRANSPORTATION**  
**DIVISION OF HIGHWAYS**  
**PROPOSED**  
**HIGHWAY PLANS**  
**F.A.U. 0379: ILLINOIS ROUTE 126**  
**COUNTY LINE ROAD TO WALLIN DRIVE**  
**SECTION: 119 RS-14**  
**PROJECT: - -**  
**RESURFACING (3P)**  
**WILL COUNTY**  
**C-91-317-10**

FOR INDEX OF SHEETS, SEE SHEET NO. 2

IMPROVEMENT LOCATED WITHIN THE VILLAGE OF PLAINFIELD

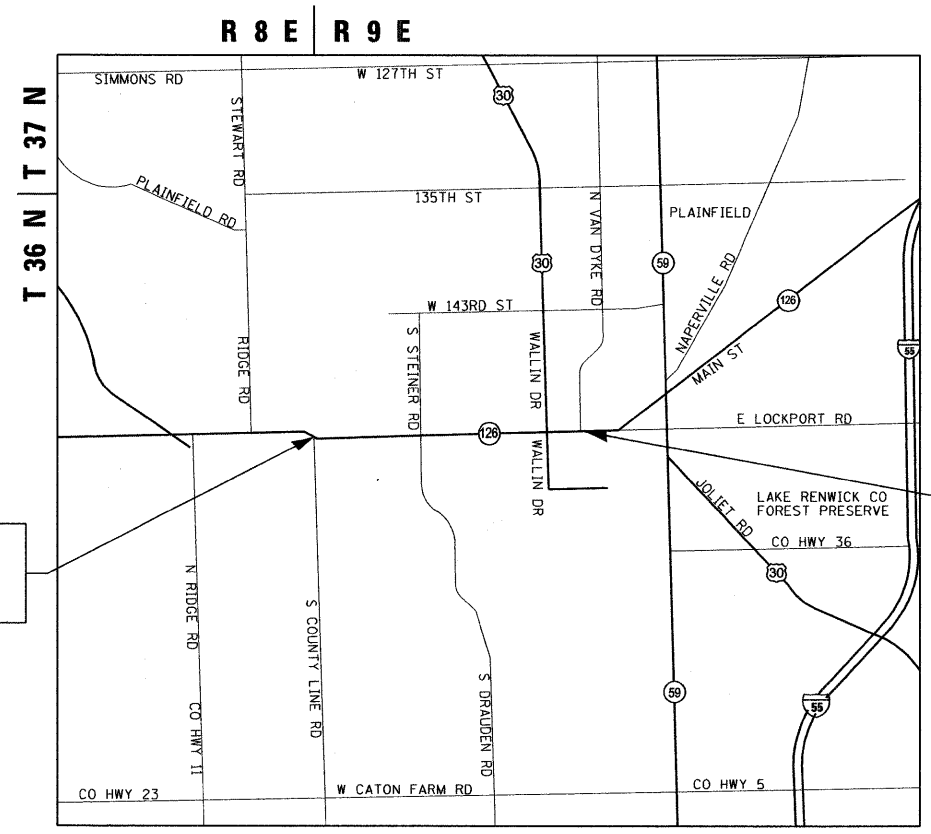


**TRAFFIC DATA**  
**ILLINOIS ROUTE 126**  
**2007 ADT = 17,100**  
**SPEED LIMIT = 40-55 MPH**



FULL SIZE PLANS HAVE BEEN PREPARED USING STANDARD ENGINEERING SCALES. REDUCED SIZED PLANS WILL NOT CONFORM TO STANDARD SCALES. IN MAKING MEASUREMENTS ON REDUCED PLANS, THE ABOVE SCALES MAY BE USED.

J.U.L.I.E.  
 JOINT UTILITY LOCATION INFORMATION FOR EXCAVATION  
 1-800-892-0123  
 OR 811



IMPROVEMENT BEGINS  
 STA. 558 + 64.41

IMPROVEMENT ENDS  
 STA. 661 + 87.37

SCALE: NTS

PLAINFIELD TOWNSHIP

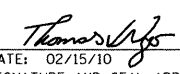
GROSS LENGTH OF PROJECT = 10,322.96 FT = 1.96 MILES  
 NET LENGTH OF PROJECT = 10,322.96 FT = 1.96 MILES

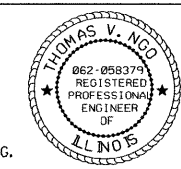
CONTRACT NO. 60J95

DISTRICT ONE - PLAN PREP ENGINEER: KEN ENG (847) 705-4247

STATE OF ILLINOIS  
 DEPARTMENT OF TRANSPORTATION  
 DIVISION OF HIGHWAYS  
 SUBMITTED FEBRUARY 16, 2010  
Diane M. O'Keefe  
 DEPUTY DIRECTOR OF HIGHWAYS, REGION ENGINEER  
March 19, 2010  
Scott E. Stitt, P.E./e  
 ACTING ENGINEER OF DESIGN AND ENVIRONMENT  
March 19, 2010  
Christine M. Reed/e  
 DIRECTOR OF HIGHWAYS, CHIEF ENGINEER


 200 22ND Street, Suite 216, Lombard, IL 60148  
 630.705.0110 voice, 630.839.2566 fax  
 www.mps-il.com  
**MILLENNIA PROFESSIONAL SERVICES**

MILLENNIA PROFESSIONAL SERVICES  
 THOMAS V. NGO, P.E.  
 \* 062-058379  
  
 DATE: 02/15/10  
 SIGNATURE AND SEAL APPLIES TO DRWG.



**PRINTED BY THE AUTHORITY**  
**OF THE STATE OF ILLINOIS**