

STATE OF ILLINOIS
DEPARTMENT OF TRANSPORTATION
DIVISION OF HIGHWAYS

**PROPOSED
HIGHWAY PLANS**

F.A.U. ROUTE 1238: IL 176
IL 60 /83 TO MIDLOTHIAN RD
SECTION 144 X-RS-6
RESURFACING
PROJECT: - -
LAKE COUNTY
C-91-319-10

FOR INDEX OF SHEETS, SEE SHEET NO. 2

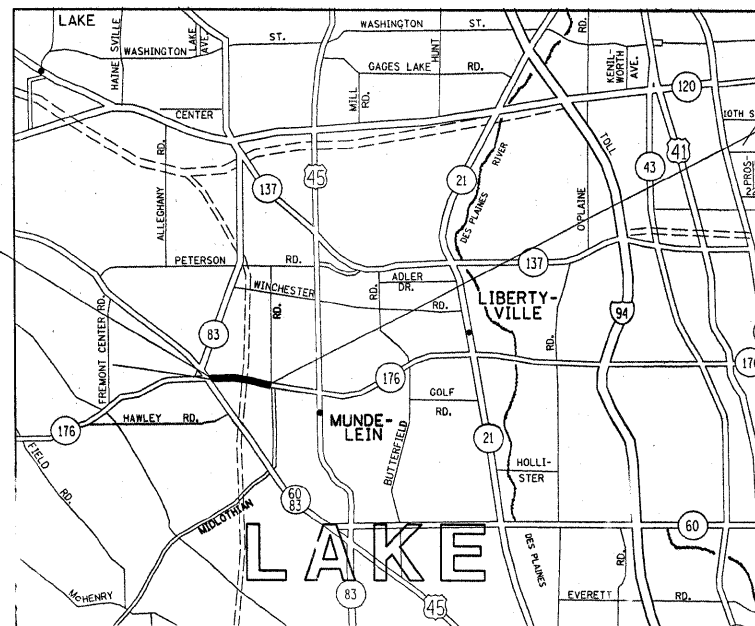
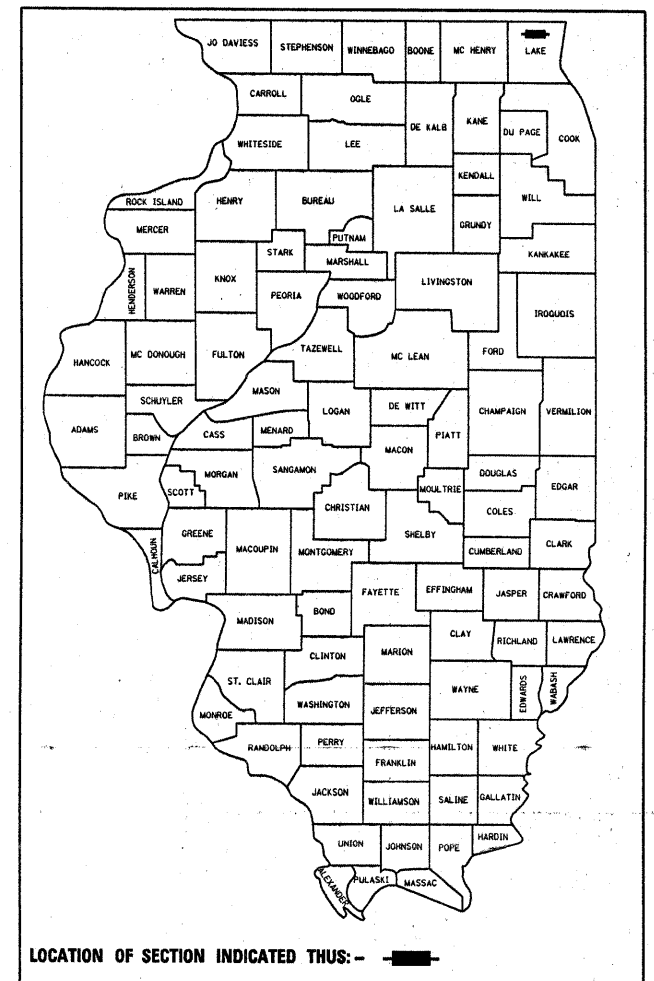
F.A.U. RTE.	SECTION	COUNTY	TOTAL SHEETS	SHEET NO.
1238	144X-RS-6	LAKE	20	1
		ILLINOIS	CONTRACT NO. 60J97	

D-91-319-10

PROJECT LOCATED IN THE VILLAGE OF MUNDELEIN

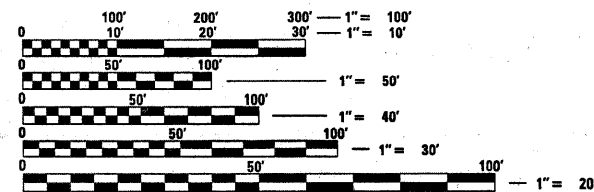
TRAFFIC DATA

2007 ADT = 14000
SPEED LIMIT = 35-45 MPH



PROJECT ENDS
STA. 136+42

PROJECT BEGINS
STA 71+44



FULL SIZE PLANS HAVE BEEN PREPARED USING STANDARD ENGINEERING SCALES. REDUCED SIZED PLANS WILL NOT CONFORM TO STANDARD SCALES. IN MAKING MEASUREMENTS ON REDUCED PLANS, THE ABOVE SCALES MAY BE USED.

J.U.L.I.E.
JOINT UTILITY LOCATION INFORMATION FOR EXCAVATION
1-800-892-0123
OR 811

PROJECT ENGINEER ROBERT BORO 847-705-4178
PROJECT MANAGER KEN ENG

CONTRACT NO. 60J97

LOCATION MAP

GROSS AND NET LENGTH OF PROJECT=6498 FT=1.23 MILE

STATE OF ILLINOIS
DEPARTMENT OF TRANSPORTATION
DIVISION OF HIGHWAYS

SUBMITTED FEBRUARY 3, 2010

Diane M. O'Keefe
DEPUTY DIRECTOR OF HIGHWAYS, REGION ENGINEER

March 19, 2010
Scott E. Stitt, P.E.
acting ENGINEER OF DESIGN AND ENVIRONMENT

March 19, 2010
Christine M. Reed
DIRECTOR OF HIGHWAYS, CHIEF ENGINEER

**PRINTED BY THE AUTHORITY
OF THE STATE OF ILLINOIS**

DISTRICT 1 DESIGN PLAN PREPARATION ENGINEER: KEN ENG / DANIEL WILGREEN (847) 705-4250