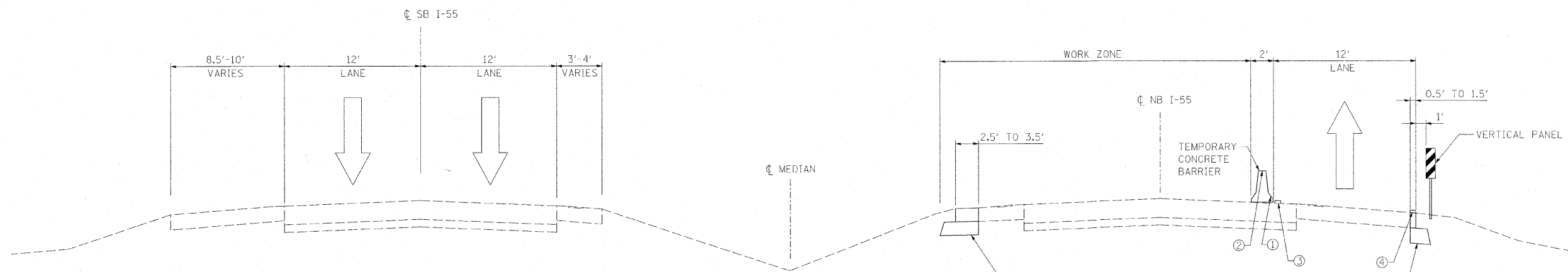
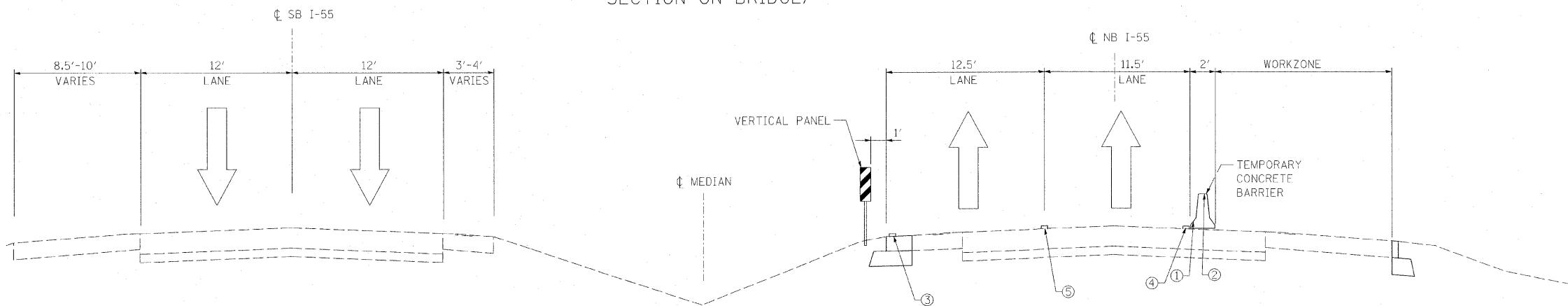


I-55 EXISTING TYPICAL SECTION
STA. 807+35 TO STA. 861+34



STAGE 1 TYPICAL SECTION
STA. 807+35 TO STA. 861+34
(SEE SHEET 2 FOR MOT SECTION ON BRIDGE)



STAGE 2 TYPICAL SECTION
STA. 821+35 TO STA 832+12
STA. 843+25 TO STA. 855+34
(SEE SHEET 2 FOR MOT SECTION ON BRIDGE)

LEGEND

- ① TEMPORARY PAVEMENT MARKING - LINE, 6" (TO BE PLACED ON LOWER FACE OF WALL WHERE WALL IS ≤ 1' FROM EDGE OF PAVEMENT.)
- ② BARRIER WALL MARKERS, TYPE C
- ③ WET REFLECTIVE TEMPORARY TAPE, TYPE III, 4" (YELLOW)
- ④ WET REFLECTIVE TEMPORARY TAPE, TYPE III, 4" (WHITE)
- ⑤ WET REFLECTIVE TEMPORARY TAPE, TYPE III, 5" (SKIP DASH)

FILE NAME = G:\ENCL\06-5329-02 01 Various Structures\CAD\MOT-PLANS\Sta\Aht-Maintenance\MOT-Sections.dgn



USER NAME = #USER#	DESIGNED - KAC	REVISED -
DRAWN - JNH	CHECKED - KAC	REVISED -
PLOT SCALE = #SCALE#	DATE - 02/24/2010	REVISED -
PLOT DATE = 3/11/2010		

**STATE OF ILLINOIS
DEPARTMENT OF TRANSPORTATION**

**INTERSTATE 55 BRIDGE REPAIR MOT STAGING SECTIONS
STRUCTURE NO. 099-0289 & 099-0313**

SCALE: SHEET NO. ___ OF ___ SHEETS STA. TO STA.

F.A.I. RTE. 55	SECTION 99 (1 & 2) RS12	COUNTY WILL	TOTAL SHEETS 110	SHEET NO. 10
CONTRACT NO. 60K04			ILLINOIS FED. AID PROJECT	