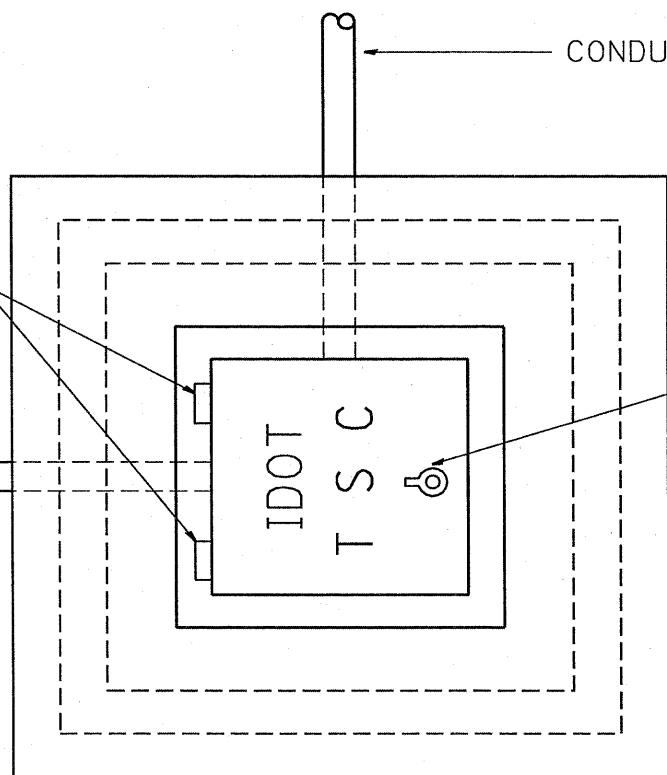


TYPE "T" HINGES REQUIRED ONLY ON  
ON HEAVY DUTY SPECIAL.

CONDUIT TYP.

CONDUIT TYP.

TYPE "G" HANDLE FOR BOTH HDHH AND HDHH SPECIAL



PLAN

HEAVY DUTY HANDHOLE MINIMUM DIMENSIONS (UNHINGED)

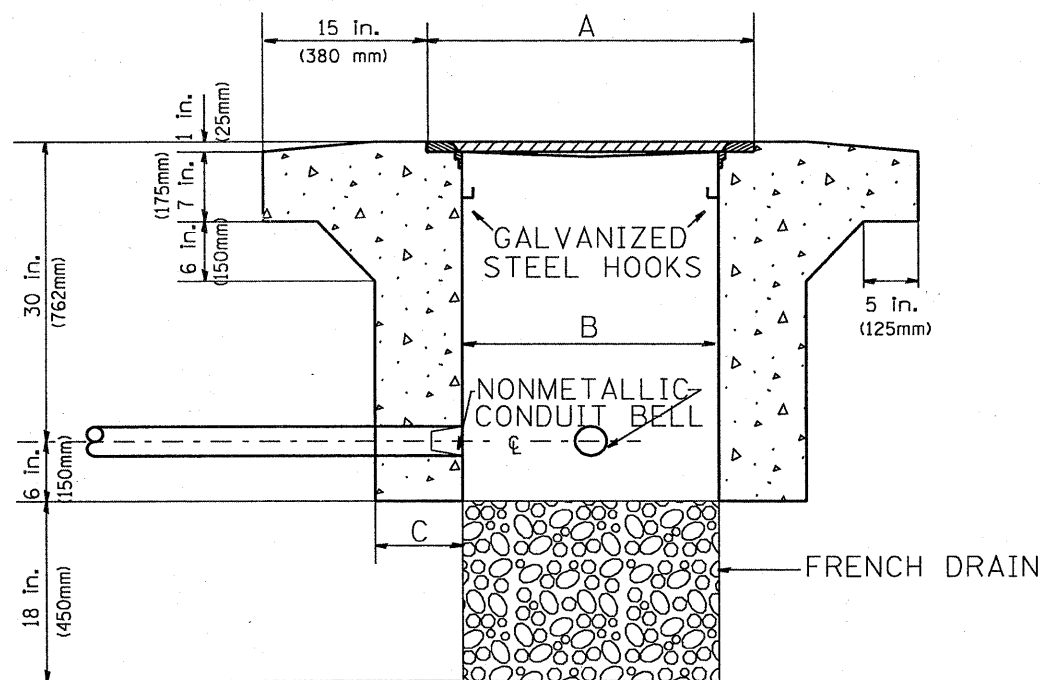
A	28" (711 mm)
B	22" (559 mm)
C	8" (200 mm)

(FRAME AND COVER 260 LBS. (118 Kg.) MIN.)

HEAVY DUTY HANDHOLE SPECIAL MINIMUM DIMENSIONS

A	31.5" (800 mm)
B	30" (762 mm)
C	10" (250 mm)

(FRAME AND COVER 405 LBS. (184 Kg. (405))



ELEVATION

PC CONCRETE - HEAVY DUTY HAND HOLE

FILE NAME = C:\d106010\155TSC TYP.dgn	USER NAME = mezag	DESIGNED - RL.	REVISED - 04/97	<b>STATE OF ILLINOIS DEPARTMENT OF TRANSPORTATION TRAFFIC SYSTEMS CENTER</b>	<b>PC CONCRETE - HEAVY DUTY HAND HOLE</b>		F.A.I. RTE.	SECTION	COUNTY	TOTAL SHEETS	SHEET NO.	
	PLOT SCALE = 100.0000' / IN.	DRAWN - G.M.	REVISED -		SCALE: NONE	SHEET NO. OF SHEETS	STA. TO STA.	55	99 (1+2) RS-12	Will	110	55
	PLOT DATE = 2/8/2010	CHECKED - RL.	REVISED -					CONTRACT NO. 60K04				
		DATE - 09/11/96	REVISED -					ILLINOIS FED. AID PROJECT				

TRAFFIC SYSTEMS CENTER (TY-1TSC-400#15)