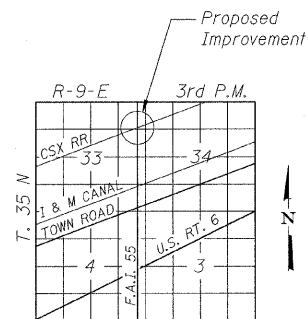


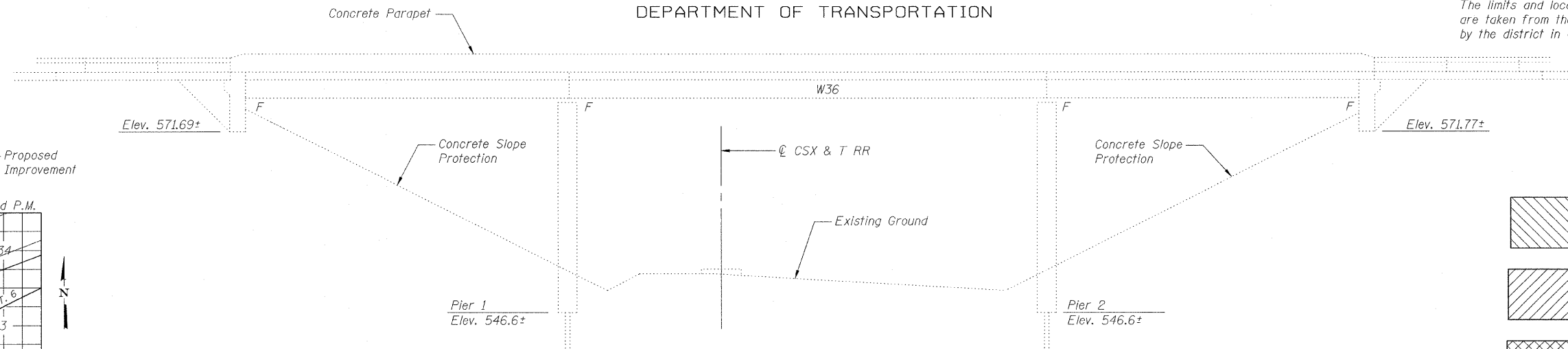
STATE OF ILLINOIS
DEPARTMENT OF TRANSPORTATION

NOTE

The limits and locations of the repairs shown are taken from the most recent survey performed by the district in October 27, 2009.

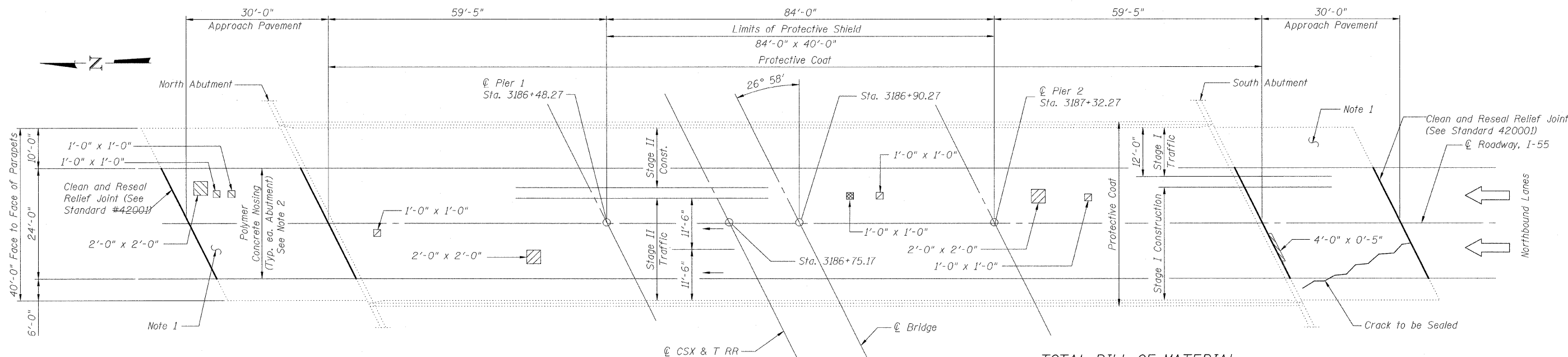
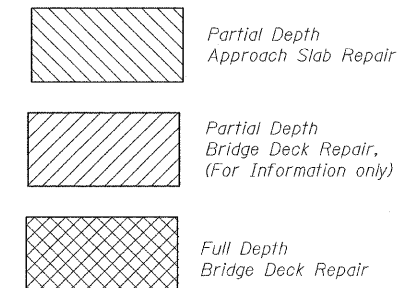


LOCATION SKETCH



ELEVATION

LEGEND



PLAN

GENERAL NOTES

Plan dimensions and details relative to existing plans are subject to nominal construction variations. The Contractor shall field verify existing dimensions and details affecting new construction and make necessary approved adjustments prior to construction or ordering of materials. Such variations shall not be cause for additional compensation for a change in scope of the work, however, the Contractor will be paid for the quantity actually furnished at the unit price bid for the work.

NOTES

1. Overlay North & South Approaches with SMA Taper from Proposed Elevation of Bridge Deck Overlay to Existing Pavement. See Detail, Sheet No. 3.
2. Install Polymer Concrete Nosing between lane lines at North and South Abutments as shown. See Detail, Sheet No. 3.

| | |
|----------|--------|
| DESIGNED | TPP |
| CHECKED | RJL |
| DRAWN | JS/SCS |
| CHECKED | TPP |

TOTAL BILL OF MATERIAL

| Item | Unit | Total |
|---|---------|-------|
| Polymerized Bituminous Materials (Prime Coat) | Gal. | 31 |
| PCC Surf. Removal - Butt Joint | Sq. Yd. | 267 |
| Protective Coat | Sq. Yd. | 1059 |
| Protective Shield | Sq. Yd. | 373 |
| Bridge Deck Grooving | Sq. Yd. | 831 |
| Epoxy Crack Injection | Foot | 28 |
| Polymer Concrete | Cu. Ft. | 2.2 |
| Bridge Deck Latex Concrete Overlay 2'4" | Sq. Yd. | 901 |
| Clean and Reseal Relief Joint | Foot | 54 |
| Polymerized HMA Surface Course, SMA, N80 | Ton | 31 |
| Approach Slab Repair (Partial Depth) | Sq. Yd. | 0.9 |
| Bridge Deck Hydro-Scarification 1/2" | Sq. Yd. | 901 |
| Deck Slab Repair (Full Depth, Type 1) | Sq. Yd. | 1 |

INDEX OF SHEETS

1. General Plan & Elevation
2. Construction Staging
3. Joint Details

GENERAL PLAN & ELEVATION
I-55 NORTHBOUND OVER
C.S.X. & T. RR
SEC. 86(VB-I-R, B-R-I, B-I-BR)
WILL COUNTY
STATION 3186+90.27
STRUCTURE NO. 099-0313



3/18/2010



ABNA
9901 S. Western Ave.
Chicago, IL 60643
Ph. 773-881-4788
F: 773.239.3728
DESIGN FIRM REG. 184.002117

| | | | | | |
|---|-------------|-----------------|--------|--------------|-----------|
| SHEET NO. 1 3 SHEETS | F.A.I. RTE. | SECTION | COUNTY | TOTAL SHEETS | SHEET NO. |
| | 55 | 99 (I-55) RS-12 | WILL | 110 | 66 |
| CONTRACT NO. 60K04 | | | | | |
| FED. ROAD DIST. NO. - ILLINOIS FED. AID PROJECT | | | | | |