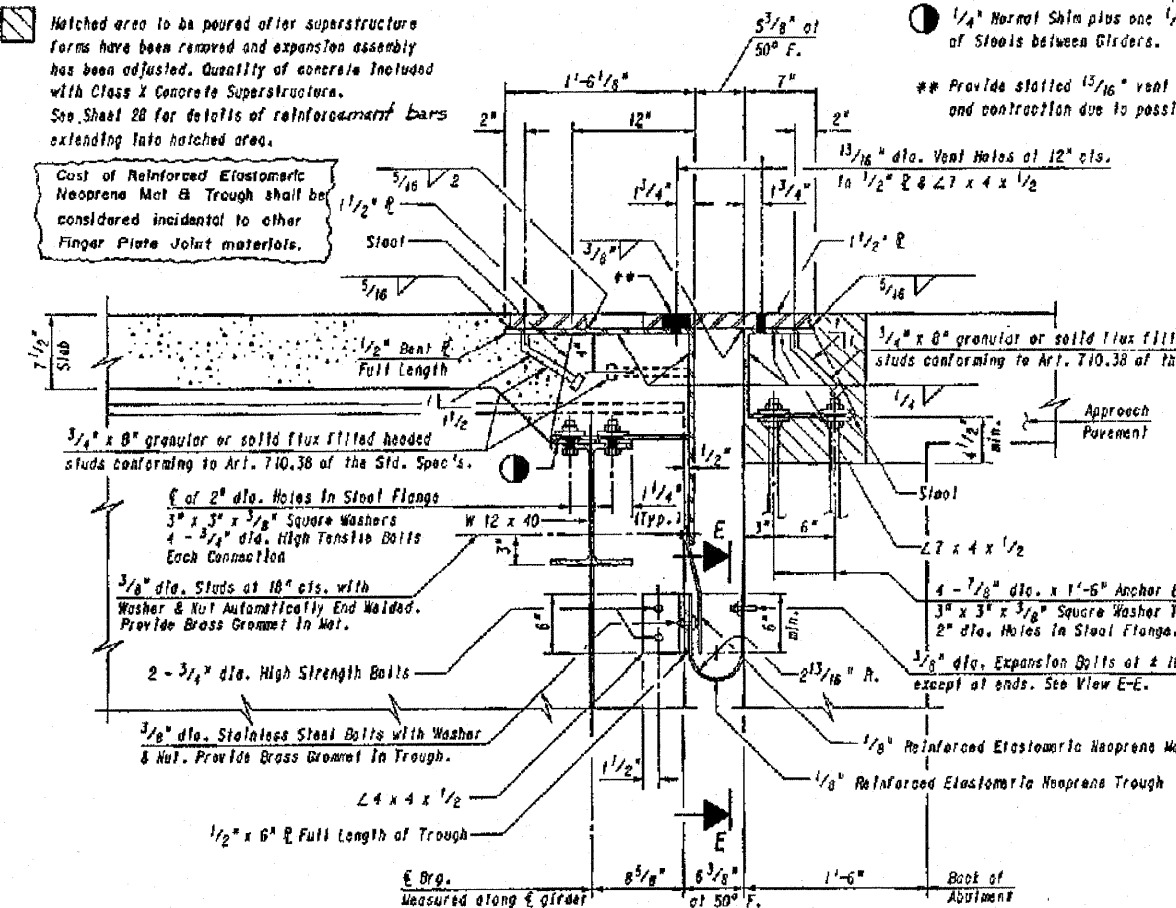


STATE OF ILLINOIS  
DEPARTMENT OF TRANSPORTATION

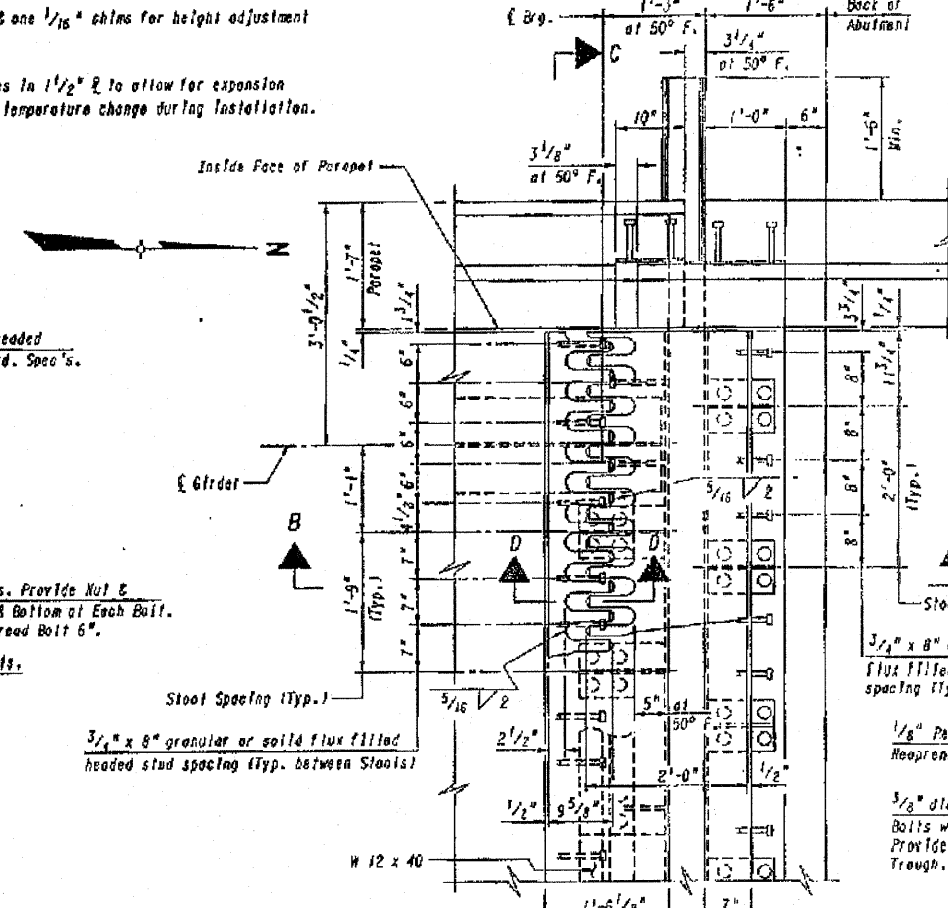
▨ Hatched area to be poured after superstructure forms have been removed and expansion assembly has been adjusted. Quantity of concrete included with Class X Concrete Superstructure. See Sheet 28 for details of reinforcement bars extending into hatched area.

Cost of Reinforced Elastomeric Neoprene Mat & Trough shall be considered incidental to other Finger Plate Joint materials.

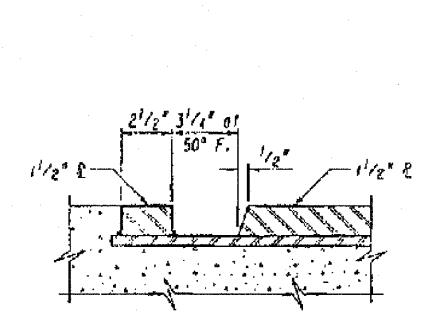
● 1/4" Normal Shim plus one 1/8" & one 1/16" shims for height adjustment of Stools between Girders.  
\*\* Provide slotted 13/16" vent holes in 1/2" R to allow for expansion and contraction due to possible temperature change during installation.



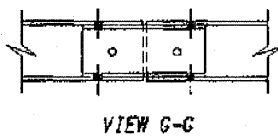
SECTION B-B



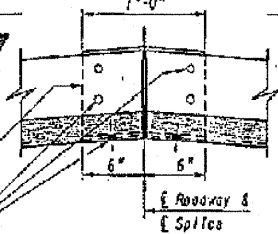
PLAN AT NORTH ABUTMENT



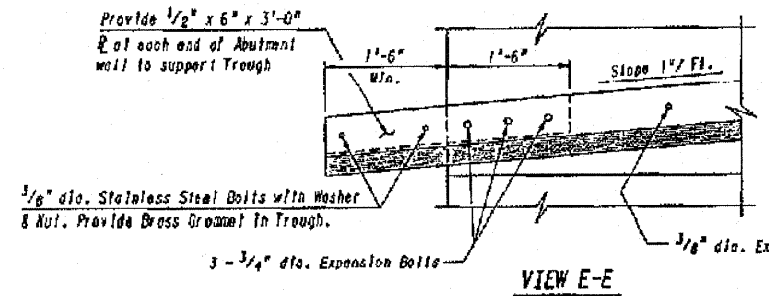
SECTION D-D



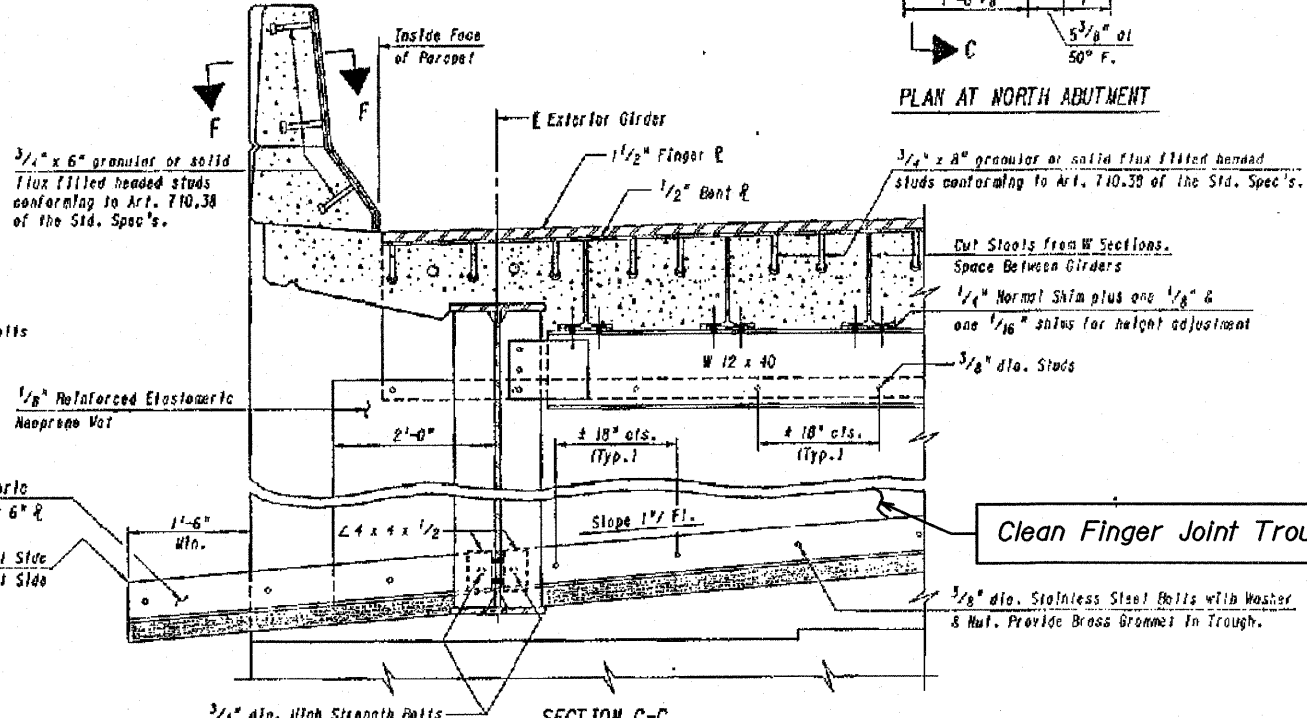
VIEW G-G



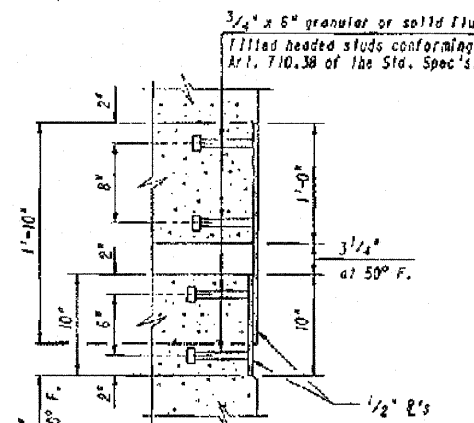
TROUGH SPLICE DETAIL



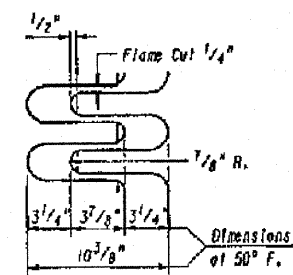
VIEW E-E



SECTION C-C



SECTION F-F



FINGER PLATE DETAIL

FOR INFORMATION ONLY  
CLEAN FINGER JOINT TROUGH ONLY

Clean Finger Joint Trough

FINGER JOINT TROUGH DETAILS  
STRUCTURE NO. 099-0286

DESIGNED	BRT
CHECKED	BJM
DRAWN	KMS
CHECKED	BJM



Wight & Company  
2500 North Frontage Road, Darien, IL 60561  
630.969.7000 630.969.7979 fax  
Design Firm Registration 184-000451

SHEET NO. 6 6 SHEETS	F.A.I. RTE.	SECTION	COUNTY	TOTAL SHEETS	SHEET NO.
	55	99 (1+2) 2S-12	WILL	110	94
	CONTRACT NO. 60604				
FED. ROAD DIST. NO. ILLINOIS FED. AID PROJECT					

1/27/2010 9:28:20 AM Default G:\ENR\06-5329-02-D1-Variation Structure\CAD\0990286\SH1\0990286\_006-Finger Joint Trough Details.dwg