

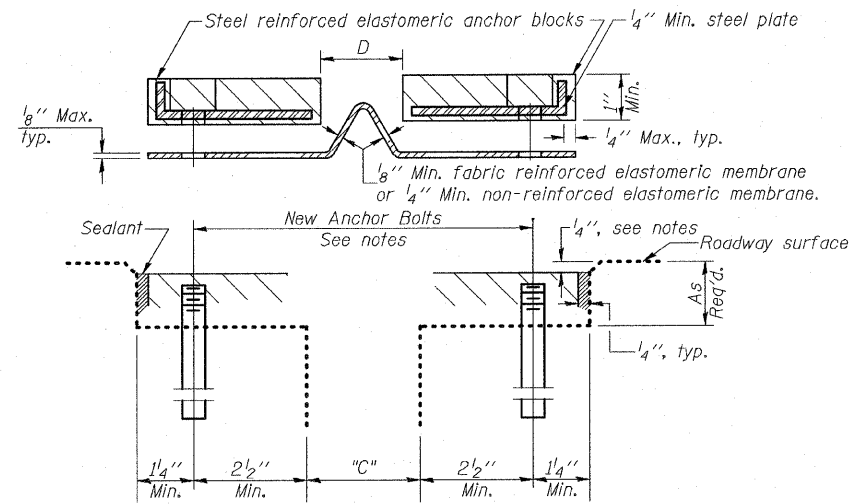
STATE OF ILLINOIS
DEPARTMENT OF TRANSPORTATION

Joint Size	"C" at 50°F	"D" at 50°F
2"	2"	1 1/2" Min.
2 1/2"	2 1/2"	1 3/4" Min.
4"	3"	2 1/2" Min.

INSTALLATION NOTES

- ① Install sponge mandrels into positions shown to form flap convolution.
- ② Install parapet or sidewalk piece (trim roadway flap to fit before applying epoxy).
- ③ Install continuous seal in roadway.
- ④ Install anchor blocks as indicated.

Note A:
Maximum spacing of anchor bolts shall be 12" centers.



CROSS SECTION

GENERAL NOTES

Neoprene Expansion Joint Repair shall consist of removal of existing neoprene blocks and membrane and replacement with new neoprene blocks and continuous membrane. Concrete removal may be required to form block-out for new joint material.

New threaded 5/8" x 6" anchor bolts to be epoxy grouted per Art. 584 of the Standard Specifications, space between existing anchors. Existing anchors to be cut flush with top of concrete. Existing anchor bolts in the parapet may be reused if the anchorage is acceptable, and can develop the torque requirements of Art. 520.07 if the Standard Specifications.

Contractor shall maintain the 1/4" recess and repair any unsound concrete for the joint block-out through use of a rapid setting material per Section 1018 of the Standard Specifications. This work will be paid for at the contract unit price per foot for Neoprene Expansion Joint (Dam). The unit price for Neoprene Expansion Joint (Dam) shall include removal of the existing joint material and flush cutting existing anchor bolts.

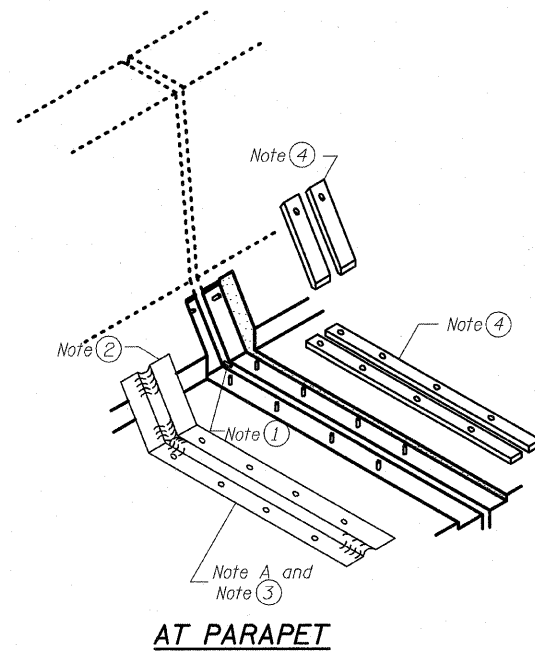
Continuous Seal Neoprene Expansion Joint shall consist of molded anchor blocks of elastomer and steel, field assembled over continuous lengths of elastomeric membrane.

The elastomeric membrane shall be pre-molded with a single or a double upward convolution that will have a "memory" to return to its molded position upon joint closure.

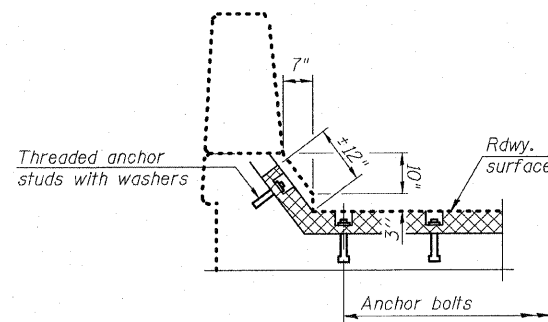
The convolution length shall be such that the extended length will not be greater than the manufactured length when the joint is fully expanded in its design range and will not protrude above the anchor blocks when the joint is fully compressed.

The parapet and roadway membrane shall be made continuous by an approved vulcanizing process. Lapping will not be permitted.

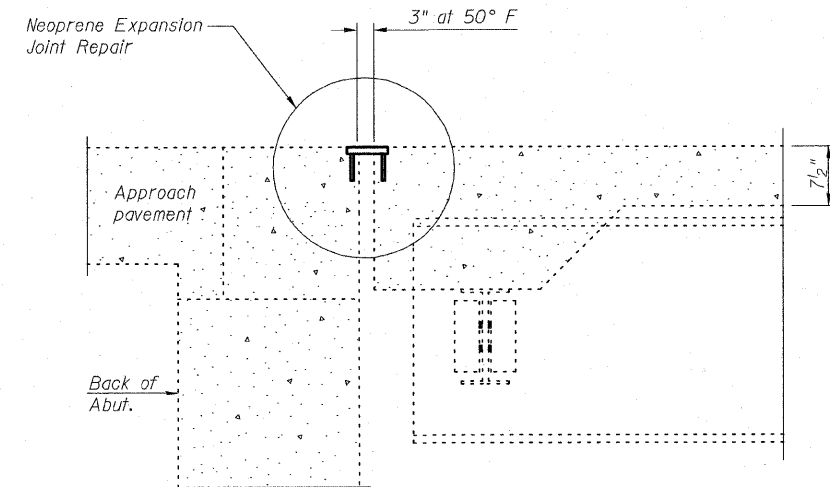
Contractor shall field verify dimensions of existing neoprene joint prior to adhering new joint material.



AT PARAPET



AT PARAPET



SECTION A-A

**NEOPRENE EXPANSION JOINT REPAIR
STRUCTURE NO. 099-0304**

DESIGNED	BRT
CHECKED	BJM
DRAWN	KMS
CHECKED	BJM



Wight & Company
2500 North Frontage Road . Darien . IL 60561
630.969.7000 630.969.7979 fax
Design Firm Registration 184-000451

SHEET NO. 5	F.A.I. RTE.	SECTION	COUNTY	TOTAL SHEETS	SHEET NO.
	55	99 (1+2)	25-12	WILL	110
5 SHEETS			CONTRACT NO. 60E04		
FED. ROAD DIST. NO. _ ILLINOIS FED. AID PROJECT					