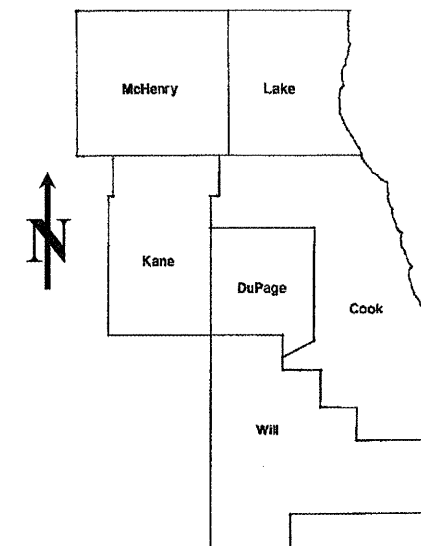


ROUTE	SECTION	COUNTY	TOTAL SHEETS	SHEET NUMBER
VARIOUS	2010-014 RS	COOK	34	1

STATE OF ILLINOIS
DEPARTMENT OF TRANSPORTATION
DIVISION OF HIGHWAYS
DISTRICT ONE
PROPOSED HIGHWAY PLANS

CONTRACT NO. 60K33

D-91-472-10



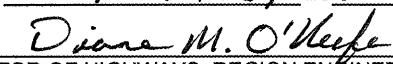
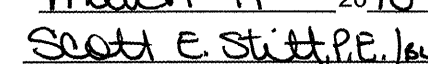
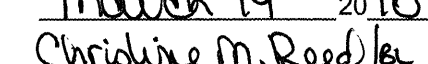
LOCATION OF IMPROVEMENT INDICATED THUS: 

FOR INDEX OF SHEETS SEE SHEET 2

VARIOUS ROUTES
 SECTION: 2010-014 RS
 VARIOUS LOCATIONS IN CENTRAL COOK COUNTY
 INTERMITTENT PAVEMENT RESURFACING
 COOK COUNTY
 C-91-472-10

DISTRICT ONE - DESIGN - PLAN PREPARATION ENGINEER:
 KEN ENG / (847) 705-4247

CONTRACT NO. 60K33

STATE OF ILLINOIS DEPARTMENT OF TRANSPORTATION DIVISION OF HIGHWAYS
SUBMITTED: <u>FEBRUARY 16, 2010</u>  DEPUTY DIRECTOR OF HIGHWAYS, REGION ENGINEER
<u>MARCH 19 2010</u>  ACTING ENGINEER OF DESIGN AND ENVIRONMENT
<u>MARCH 19 2010</u>  DIRECTOR, DIVISION OF HIGHWAYS

PRINTED BY THE AUTHORITY
OF THE STATE OF ILLINOIS

J.U.L.I.E.: JOINT UTILITY LOCATION
INFORMATION FOR EXCAVATION
(312) 744-7000

INDEX OF SHEETS

STATE STANDARDS

GENERAL NOTES

<u>SHEET NO.</u>	<u>DESCRIPTION</u>	<u>STANDARD NO.</u>	<u>DESCRIPTION</u>
1	TITLE SHEET	000001-05	TYPICAL SYMBOLS, ABBREVIATIONS AND PATTERNS
2	INDEX OF SHEETS, STATE STANDARDS AND GENERAL NOTES	701101-02	OFF-RD. OPERATIONS, MULTILANE
3	SUMMARY OF QUANTITIES	701201-03	LANE CLOSURE, 2L, 2W, DAY ONLY
4	GENERAL LOCATION MAP	701301-03	LANE CLOSURE, 2L, 2W, SHORT TIME OPERATIONS
5	SUMMARY OF PATCHING SCHEDULE	701306-02	LANE CLOSURE, 2L, 2W, SLOW MOVING OPERATIONS - DAY ONLY
6-22	PATCHING SCHEDULE	701336-05	LANE CLOSURE, 2L, 2W, WORK AREAS IN SERIES
23	BUTT JOINT AND HMA TAPER DETAILS	701400-04	APPROACH TO LANE CLOSURE, FREEWAY/EXPRESSWAY
24	FREEWAY ENTRANCE AND EXIT RAMP CLOSURE DETAILS	701401-05	LANE CLOSURE, FREEWAY/EXPRESSWAY
25	TRAFFIC CONTROL DETAILS FOR FREEWAY SINGLE AND MULTI-LANE WEAVE	701411-06	LANE CLOSURE, MULTILANE, AT ENTRANCE OR EXIT RAMP
26	TRAFFIC CONTROL AND PROTECTION FOR SIDE ROADS, INTERSECTIONS AND DRIVEWAYS	701426-03	LANE CLOSURE, MULTILANE, INTERMITTENT OR MOVING OPERATIONS
27	TYPICAL APPLICATIONS: RAISED REFLECTIVE PAVEMENT MARKERS (SNOW-PLOW RESISTANT)	701446-01	TWO LANE CLOSURE, FREEWAY/EXPRESSWAY
28	DISTRICT ONE TYPICAL PAVEMENT MARKINGS	701501-05	URBAN LANE CLOSURE, 2L, 2W, UNDIVIDED
29-30	MULTI-LANE FREEWAY PAVEMENT MARKING DETAILS	701601-06	URBAN LANE CLOSURE, MULTILANE, 1W OR 2W WITH NONTRAVERSABLE MEDIAN
31	TRAFFIC CONTROL AND PROTECTION OF TURN BAYS (TO REMAIN OPEN TO TRAFFIC)	701606-06	URBAN LANE CLOSURE, MULTILANE, 2W WITH MOUNTABLE MEDIAN
32	TRAFFIC CONTROL DETAILS FOR FREEWAY SHOULDER CLOSURES AND PARTIAL RAMP CLOSURES	701701-06	URBAN LANE CLOSURE, MULTILANE INTERSECTION
33	ARTERIAL ROAD INFORMATION SIGN	701901-01	TRAFFIC CONTROL DEVICES
34	DETECTOR LOOP INSTALLATION DETAIL FOR ROADWAY RESURFACING		

BEFORE STARTING ANY EXCAVATION, THE CONTRACTOR SHALL CALL "JULIE" AT (800) 892-0123 OR 811 FOR FIELD LOCATIONS OF BURIED ELECTRIC, TELEPHONE AND GAS FACILITIES. (48 HOUR NOTIFICATION REQUIRED)

THE CONTRACTOR WILL NOT BE ALLOWED TO SET UP A YARD OR FIELD OFFICE ON STATE (OR TOLLWAY) PROPERTY WITHOUT WRITTEN PERMISSION FROM THE DEPARTMENT (OR ISTHA)

WHEN ARTIFICIAL LIGHTING IS UTILIZED IN NIGHT OPERATIONS, THE CONTRACTOR SHALL EXERCISE THE UTMOST PRECAUTIONS IN PREVENTING ADVERSE VISIBILITY TO THE MOTORING PUBLIC AND ADJOINING RESIDENTIAL AREAS.

ANY PAVEMENT MARKINGS AND RAISED REFLECTIVE PAVEMENT MARKERS OBLITERATED BY MILLING AND RESURFACING OPERATIONS ON SIDE STREETS AND ENTRANCES SHALL BE REPLACED AND PAID FOR IN KIND.

BEFORE BEGINNING ANY WORK, THE CONTRACTOR SHALL RETAIN AND RECORD FOR FUTURE REFERENCE, ALL EXISTING PAVEMENT MARKING LINES (AND RAISED REFLECTIVE PAVEMENT MARKERS) IN ORDER THAT THESE LOCATIONS CAN BE RE-ESTABLISHED FOR STRIPING. EXACT LOCATIONS OF ALL PAVEMENT MARKINGS SHALL BE AS DIRECTED BY THE ENGINEER.

ALL PAVEMENT PATCHING LOCATIONS WILL BE DETERMINED IN THE FIELD BY THE ENGINEER.

THE CONTRACTOR SHALL CONTACT THE DISTRICT ONE TRAFFIC CONTROL SUPERVISOR AT (847) 705-4470 A MINIMUM OF 72 HOURS IN ADVANCE OF BEGINNING WORK.

THE ENGINEER SHALL CONTACT MR. WALLY CZARNY, AREA TRAFFIC FIELD ENGINEER AT (773) 685-8386 MINIMUM OF TWO (2) WEEKS PRIOR TO PLACEMENT OF PERMANENT PAVEMENT MARKINGS.

DOUBLE LANE MARKERS ARE TO BE USED AS SHOWN ON THE DISTRICT ONE DETAIL "TYPICAL APPLICATIONS - RAISED REFLECTIVE PAVEMENT MARKERS (SNOW-PLOW RESISTANT)" SHOWN IN THE PLANS.

THE EXISTING ROADWAY TYPICAL SECTION IS ASSUMED TO HAVE A 3 INCH HOT-MIX ASPHALT OVERLAY ON TOP OF A TEN INCH CONCRETE BASE.

ALL PAVEMENT PATCHES SHOWN IN THE PLANS ARE TWO (2) INCH MILL AND RESURFACE ONLY. THE MINIMUM WIDTH FOR MILLING AND PATCHING SHALL BE TWO (2) FEET.

NO PATCHING OR RESURFACING IS TO BE DONE WITHIN FIFTY (50) FEET OF ANY RAILROAD CROSSING WITHOUT OBTAINING THE PROPER RAILROAD PROTECTIVE LIABILITY INSURANCE.

THE COST OF TRAFFIC CONTROL AND PROTECTION FOR THE PROJECT (EXCLUDING I-55 (STEVENSON EXPY) FROM KEDZIE AVE. TO THE COOK COUNTY LINE) SHALL BE INCLUDED IN THE COST OF THE ASSOCIATED ROAD WORK. TRAFFIC CONTROL AND PROTECTION FOR I-55 (STEVENSON EXPY) SHALL BE PAID FOR AS TRAFFIC CONTROL AND PROTECTION (EXPRESSWAYS).

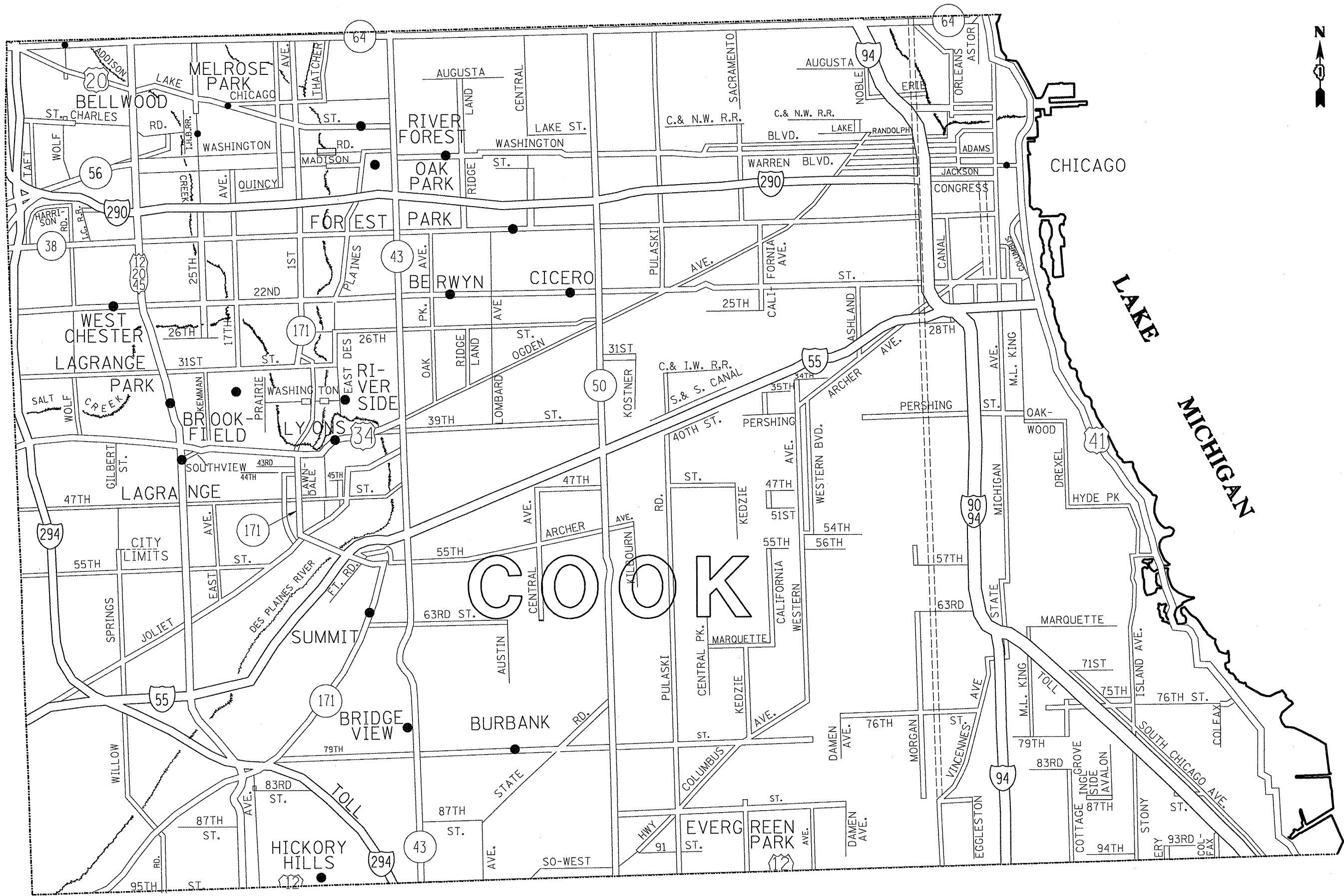
THE COST OF ANY PARTIAL OR FULL DEPTH PATCHING REQUIRED AFTER THE REMOVAL OF THE EXISTING 2 INCH HOT-MIX ASPHALT SURFACE SHALL BE PAID FOR IN ACCORDANCE WITH ARTICLE 109.04 OF THE STANDARD SPECIFICATIONS.

HOT-MIX ASPHALT MIXTURE REQUIREMENTS

	<u>MIXTURE TYPE</u>	<u>AC TYPE</u>	<u>AIR VOIDS (%)</u>
ARTERIAL ROUTES	HOT-MIX ASPHALT SURFACE COURSE, MIX "D", N70 (IL 9.5MM), 2"	PG 64-22	4% @ 70 GYR
STEVENSON EXPY.	HOT-MIX ASPHALT SURFACE COURSE, MIX "D", N90 (IL 9.5MM), 2"	PG 64-22	4% @ 90 GYR

THE UNIT WEIGHT USED TO CALCULATE ALL HOT-MIX ASPHALT SURFACE MIXTURE QUANTITIES IS 112 LBS/SY/IN.

FILE NAME =	USER NAME = wilgreendp	DESIGNED -	REVISED -	STATE OF ILLINOIS DEPARTMENT OF TRANSPORTATION	INDEX OF SHEETS, STATE STANDARDS AND GENERAL NOTES	F.A. RTE.	SECTION	COUNTY	TOTAL SHEETS	SHEET NO.
at:\pwork\pwork\WIDOT\WILGREENDP\0183621\0183621.dgn	DRAWN -	REVISED -	VAR.			2010-014 RS	COOK	34	2	
PLOT SCALE = 100.0000' / IN.	CHECKED -	REVISED -	CONTRACT NO. 60K33							
PLOT DATE = 2/20/2010	DATE -	REVISED -	FED. ROAD DIST. NO. 1 ILLINOIS FED. AID PROJECT							
SCALE:						SHEET NO.	OF	SHEETS	STA.	TO STA.



FILE NAME =	USER NAME = wilgreendp	DESIGNED -	REVISED -	STATE OF ILLINOIS DEPARTMENT OF TRANSPORTATION	GENERAL LOCATION MAP - CENTRAL COOK COUNTY			F.A. RTE.	SECTION	COUNTY	TOTAL SHEETS	SHEET NO.
ct:\pw_work\NPWIDOT\WILGREENDP\0183621\Design.dgn	DRAWN -	REVISED -	VAR.					2010-014 RS	COOK	34	4	
PLOT SCALE = 100.0000' / IN.	CHECKED -	REVISED -	CONTRACT NO. 60K33									
PLOT DATE = 2/10/2010	DATE -	REVISED -	FED. ROAD DIST. NO. 1 (ILLINOIS) FED. AID PROJECT									
				SCALE:	SHEET NO.	OF	SHEETS	STA.	TO	STA.		

SUMMARY - CENTRAL COOK COUNTY ROUTES	HMA 2" MILL & RESURFACE (SY)
1ST AVE. CUTOFF (22ND ST. TO 1ST AVE.)	298
55TH ST. (LAGRANGE RD. TO MADISON AVE.)	532
47TH ST. (LARAMIE AVE. TO CICERO AVE.)	1715
79TH ST. (CICERO AVE. TO I-294)	4630
ARCHER AVE. (ROBERTS RD. TO 88TH AVE.)	242
ARCHER AVE. (55TH ST. TO 65TH ST.)	283
CERMAK RD. AT 25TH AVE. FRONTAGE RD. (BARNSDALE RD. TO 21ST ST.)	589
CICERO AVE. (71ST ST. TO 87TH ST.)	2530
EAST AVE. (55TH ST. TO JOLIET RD.)	661
OAK PARK AVE. NB (31ST ST. TO 50' SOUTH OF TRAFFIC SIGNAL)	82
HARLEM AVE. (OGDEN AVE. TO 79TH ST.)	1439
HARLEM AVE. (NORTH AVE. TO LAEK ST.)	181
LONG ARM RAMP (SB LAGRANGE RD. TO EB ARCHER AVE. - 88TH AVE.)	274
LONG ARM RAMP (SB LAGRANGE RD. TO EB 79TH ST. - 88TH AVE.)	105
ROOSEVELT RD. (WESTCHESTER BLVD. TO 1ST AVE.)	878
WILLOW SPRINGS RD. (ARCHER AVE. TO CORCORAN RD.)	321
STATE RD. (79TH ST. TO CICERO AVE.)	1204
NORTHBOUND I-55 (STEVENSON EXPY.) (KEDZIE AVE. TO COOK/DUPAGE COUNTY LINE	2995
SOUTHBOUND I-55 (STEVENSON EXPY.) (KEDZIE AVE. TO COOK/DUPAGE COUNTY LINE	3643
CENTRAL COOK COUNTY TOTALS =	22602
	SY

NOTE:

- * LOCATIONS ON I-55 (STEVENSON EXPY.) ARE TO USE HOT-MIX ASPHALT SURFACE COURSE, MIX "D", N90

FILE NAME = c:\p\work\p\midot\wilgreendp\0183621\0183621.dgn	USER NAME = wilgreendp	DESIGNED -	REVISED -	STATE OF ILLINOIS DEPARTMENT OF TRANSPORTATION	SUMMARY OF PATCHING SCHEDULE CENTRAL COOK COUNTY			F.A. RTE.	SECTION	COUNTY	TOTAL SHEETS	SHEET NO.			
	PLOT SCALE = 100.0000' / IN.	DRAWN -	REVISED -		SCALE:	SHEET NO.	OF	SHEETS	STA.	TO STA.	VAR.	2010-014 RS	COOK	34	5
	PLOT DATE = 2/20/2010	CHECKED -	REVISED -												
		DATE -	REVISED -												
													FED. ROAD DIST. NO. 1 (ILLINOIS) FED. AID PROJECT CONTRACT NO. 60K33		

ROUTE: 1st Ave. Cut Off (22nd St. to 1st Ave.)							
CROSS STREETS		DIRECTION (EB/WB) (NB/SB)	LANE NO. (1, 2, 3)	PAVEMENT		REPAIR	
FROM	TO			PATCH WIDTH	PATCH LENGTH	AREA (SQ FT)	REPAIR AREA (SQ YD)
22nd St.	1st Ave.	SB	1	6	14	84	9
			1	6	14	84	9
			1	6	14	84	9
		SB	1	6	14	84	9
		SB	1	6	14	84	9
			1	14	30	420	47
		SB	1	6	14	84	9
		SB	1	6	14	84	9
		SB	1	8	15	120	13
		SB	1	6	14	84	9
		SB	1	6	14	84	9
			1	6	14	84	9
			1	6	14	84	9
		NB	1	6	15	90	10
		NB	1	6	15	90	10
		NB	1	6	15	90	10
		NB	1	6	15	90	10
		NB	1	6	14	84	9
		NB	1	6	14	84	9
		NB	1	6	14	84	9
		NB	1	6	14	84	9
		NB	1	10	14	140	16
		NB	1	10	30	300	33
		NB	1	6	14	84	9
TOTALS:					373		298
					FT		SY

ROUTE: 55th St. (LaGrange Rd. to Madison Ave)							
CROSS STREETS		DIRECTION (EB/WB) (NB/SB)	LANE NO. (1, 2, 3)	PAVEMENT		REPAIR	
FROM	TO			PATCH WIDTH	PATCH LENGTH	AREA (SQ FT)	REPAIR AREA (SQ YD)
LaGrange Rd.	Madison Ave.	EB	1	12	100	1200	133
		EB	2	12	100	1200	133
		WB	1	12	100	1200	133
		WB	2	12	100	1200	133
TOTALS:					400		532
					FT		SY

ROUTE: 47th St. (Laramie Ave. to Cicero Ave.)									
CROSS STREETS		DIRECTION (EB/WB) (NB/SB)	LANE NO. (1, 2, 3)	PAVEMENT PATCH WIDTH	PAVEMENT PATCH LENGTH	REPAIR AREA (SQ FT)	REPAIR AREA (SQ YD)		
FROM	TO								
Cicero	Lacrosse	WB	1	6	10	60	7		
			2	6	10	60	7		
			1	6	10	60	7		
			2	6	10	60	7		
			2	20	10	200	22		
			2	10	10	100	11		
			EB	TURN	6	10	60	7	
		Lacrosse	Lamon	WB	1	10	125	1250	139
					2	10	125	1250	139
					1	5	10	50	6
					2	5	10	50	6
					1	40	10	400	44
					1	6	10	60	7
					2	6	10	60	7
Lamon	Laporte	EB	1	5	10	50	6		
			2	5	10	50	6		
			1	3	10	30	3		
			2	3	10	30	3		
			2	3	10	30	3		
			2 (Gut)	2	80	160	18		
			1	5	10	50	6		
		Lamon	Laporte	WB	1&2	4	70	280	31
					1	5	10	50	6
					2	5	10	50	6
					1	5	10	50	6
					2	5	10	50	6
					1	40	10	400	44
					EB	1	5	10	50
Laporte	Lavergne	WB	2	5	10	50	6		
			1	7	10	70	8		
			2	7	10	70	8		
			1	30	10	300	33		
			2	3	10	30	3		
			1	3	10	30	3		
			2	3	10	30	3		
		Laporte	Lavergne	EB	1	3	10	30	3
					2	3	10	30	3
					1	3	10	30	3
					2	5	10	50	6
					CL	4	50	200	22
					1	7	10	70	8
					2	7	10	70	8
Lavergne	Lawler	WB	1	3	10	30	3		
			2	3	10	30	3		
			1	3	10	30	3		
			2	3	10	30	3		
			2	10	10	100	11		
			2 (Gut)	2	50	100	11		
			1	5	10	50	6		
		Lavergne	Lawler	EB	2	10	10	100	11
					2	10	10	100	11
					1	5	10	50	6
					2	5	10	50	6
					2	10	150	1500	167
					2	10	90	900	100
					1	10	30	300	33
Lavergne	Lawler	WB	1	6	10	60	7		
			2	6	10	60	7		

ROUTE: 47th St. (Laramie Ave. to Cicero Ave.)											
CROSS STREETS		DIRECTION (EB/WB) (NB/SB)	LANE NO. (1, 2, 3)	PAVEMENT PATCH WIDTH	PAVEMENT PATCH LENGTH	REPAIR AREA (SQ FT)	REPAIR AREA (SQ YD)				
FROM	TO										
Lavergne	Lawler	WB	CL	4	100	400	44				
			1	6	10	60	7				
			2	6	10	60	7				
			1	8	10	80	9				
			2	8	10	80	9				
			1	3	10	30	3				
			2	3	10	30	3				
			1	3	10	30	3				
			2	20	10	200	22				
			Lavergne	Lawler	EB	1	6	10	60	7	
						2	6	10	60	7	
						1	5	6	30	3	
		2				5	10	50	6		
		1				25	10	250	28		
		2				25	10	250	28		
		1				3	10	30	3		
		2				25	10	250	28		
		1				3	10	30	3		
		2				3	10	30	3		
		1				3	10	30	3		
		Lawler				Leclaire	WB	1	3	10	30
			2	3	10			30	3		
			2	5	10			50	6		
			1	3	10			30	3		
1	3		10	30	3						
2 (Gut)	2		50	100	11						
Lawler	Leclaire		EB	2	3		10	30	3		
				1	3		70	210	23		
				2	3		10	30	3		
				CL	4		20	80	9		
				1	3		10	30	3		
				2	3		10	30	3		
Leclaire	Lemington	WB	2	3	10	30	3				
			1	3	10	30	3				
			2	3	10	30	3				
			1	5	10	50	6				
			1	3	10	30	3				
			2	3	10	30	3				
		Leclaire	Lemington	EB	1	3	10	30	3		
					2	3	10	30	3		
					1	3	10	30	3		
					2	3	10	30	3		
					1	20	10	200	22		
					1	3	10	30	3		
Lemington	Laramie	WB	2	3	10	30	3				
			1	5	10	50	6				
			1	3	10	30	3				
			2	3	10	30	3				
			1	6	10	60	7				
			2	5	10	50	6				
		Lemington	Laramie	EB	1	4	20	80	9		
					2	5	10	50	6		
					1	5	10	50	6		
					1	3	10	30	3		
					2	3	10	30	3		
					1	6	10	60	7		
Lemington	Laramie	WB	2	6	10	60	7				
			1	5	10	50	6				
			1	3	10	30	3				
			2	3	10	30	3				
			1	6	10	60	7				
			2	5	10	50	6				
		Lemington	Laramie	EB	1	6	10	60	7		
					2	6	10	60	7		
					1&2	4	100	400	44		
					2	30	10	300	33		
					TOTALS:					2332	1715
										FT	SY

ROUTE: 79th St. (Cicero Ave. to I-294)

CROSS STREETS		DIRECTION (EB/WB) (NB/SB)	LANE NO. (1, 2, 3)	PAVEMENT PATCH WIDTH	PAVEMENT PATCH LENGTH	REPAIR AREA (SQ FT)	REPAIR AREA (SQ YD)
FROM	TO						
Cicero	Lamon	WB	1	10	12	120	13
			2	10	12	120	13
			2	10	12	120	13
			3	6	12	72	8
			3	10	12	120	13
		EB	1	8	12	96	11
			1	10	12	120	13
			2	8	12	96	11
			3	10	12	120	13
Lamon	Laporte	WB	1	10	12	120	13
			2	10	12	120	13
Laporte	Lawler	WB	1	6	12	72	8
			2	10	12	120	13
Lawler	Lemington	WB	Median	10	12	120	13
			1	6	12	72	8
			1	6	12	72	8
			1	15	12	180	20
			2	5	12	60	7
		EB	2	6	12	72	8
			2	10	12	120	13
			Median	6	12	72	8
			Median	10	12	120	13
			Median	10	12	120	13
Lemington	Lockwood	WB	1	10	12	120	13
			1	6	12	72	8
			2	6	12	72	8
			2	6	12	72	8
			2	10	12	120	13
		EB	Median	6	12	72	8
			Median	10	12	120	13
			Median	10	12	120	13
			1	10	12	120	13
			1	15	12	180	20
Lockwood	State	WB	2	15	12	180	20
			2	10	12	120	13
			1	10	12	120	13
			2	6	12	72	8
			2	10	12	120	13
		EB	Median	6	12	72	8
			Median	10	12	120	13
			Median	10	12	120	13
			1	12	12	144	16
			2	12	12	144	16
State	Linder	WB	1	6	12	72	8
			2	20	12	240	27
			Median	10	12	120	13
			1	10	12	120	13
			1	10	12	120	13
		EB	2	10	12	120	13
			2	10	12	120	13
			2	10	12	120	13
			1	6	12	72	8
			2	6	12	72	8
Linder	Central	WB	1	10	12	120	13
			1	10	12	120	13
			1	12	12	144	16
			2	10	12	120	13
			2	10	12	120	13
		EB	2	10	12	120	13
			1	20	12	240	27
			1	10	12	120	13
			2	20	12	240	27
			2	10	12	120	13
Central	Massasoit	WB	1	10	12	120	13
			1	10	12	120	13
			1	10	12	120	13

ROUTE: 79th St. (Cicero Ave. to I-294)

CROSS STREETS		DIRECTION (EB/WB) (NB/SB)	LANE NO. (1, 2, 3)	PAVEMENT PATCH WIDTH	PAVEMENT PATCH LENGTH	REPAIR AREA (SQ FT)	REPAIR AREA (SQ YD)
FROM	TO						
Massasoit	Mansfield	WB	1	10	12	120	13
			2	10	12	120	13
			2	10	12	120	13
			2	10	12	120	13
			2	10	12	120	13
		EB	1	10	12	120	13
			1	10	12	120	13
			2	10	12	120	13
			2	10	12	120	13
			2	10	12	120	13
Mansfield	Austin	WB	1	6	30	180	20
			1	10	30	300	33
			1	10	12	120	13
			2	6	12	72	8
			2	10	12	120	13
		EB	2	10	12	120	13
			2	5	12	60	7
			1	6	12	72	8
			1	20	20	400	44
			2	20	12	240	27
Austin	Meade	WB	2	10	12	120	13
			1	10	12	120	13
			1	10	12	120	13
			2	10	12	120	13
			2	10	12	120	13
		EB	2	10	12	120	13
			2	10	12	120	13
			2	10	12	120	13
			1	10	12	120	13
			2	10	12	120	13
Meade	Merrimac	WB	1	10	12	120	13
			1	10	12	120	13
			1	6	12	72	8
			2	10	12	120	13
			2	10	12	120	13
		EB	2	10	12	120	13
			2	10	12	120	13
			2	6	12	72	8
			Median	10	12	120	13
			1	10	12	120	13
Merrimac	Narragansett	WB	1	10	12	120	13
			1	10	12	120	13
			1	10	12	120	13
			2	10	12	120	13
			2	10	12	120	13
		EB	2	10	12	120	13
			1	10	12	120	13
			1	10	12	120	13
			2	12	12	144	16
			2	10	12	120	13

CONTINUED ON NEXT SHEET

FILE NAME =	USER NAME = wlgreendp	DESIGNED -	REVISED -	STATE OF ILLINOIS DEPARTMENT OF TRANSPORTATION	PATCHING SCHEDULE 79TH ST.	F.A. RTE.	SECTION	COUNTY	TOTAL SHEETS	SHEET NO.	
ca:\pw\work\PWIDOT\WILGREENDP\d0183621\	esign.dgn	DRAWN -	REVISED -			VAR.	2010-014 RS	COOK	34	8	
PLOT SCALE = 100.0000' / IN.	CHECKED -	REVISED -	SCALE:			SHEET NO.	OF	SHEETS	STA.	TO STA.	FED. ROAD DIST. NO. 1 ILLINOIS FED. AID PROJECT
PLOT DATE = 2/20/2010	DATE -	REVISED -									CONTRACT NO. 60K33

ROUTE: 79th St. (Cicero Ave. to I-294)

CROSS STREETS		DIRECTION (EB/WB) (NB/SB)	LANE NO. (1, 2, 3)	PAVEMENT PATCH WIDTH	PAVEMENT PATCH LENGTH	REPAIR AREA (SQ FT)	REPAIR AREA (SQ YD)
FROM	TO						
			2	10	12	120	13
			Median	10	12	120	13
		EB	1	12	12	144	16
			1	10	12	120	13
			1	10	12	120	13
			1	10	12	120	13
			2	10	12	120	13
			2	8	12	96	11
			2	10	12	120	13
			2	8	12	96	11
Narragansett	Neenah	WB	1	10	12	120	13
			1	10	12	120	13
			1	8	12	96	11
			2	10	12	120	13
			2	10	12	120	13
			2	10	12	120	13
			Median	10	12	120	13
		EB	1	10	12	120	13
			1	10	12	120	13
			1	10	12	120	13
			2	10	12	120	13
			2	6	12	72	8
			2	10	12	120	13
Neenah	Normandy	WB	1	10	12	120	13
			1	10	12	120	13
			1	10	12	120	13
			1	10	12	120	13
			2	6	12	72	8
			2	10	12	120	13
			2	6	12	72	8
			2	10	12	120	13
			2	10	12	120	13
		EB	1	10	12	120	13
			1	8	12	96	11
			1	8	12	96	11
			1	10	12	120	13
			1	12	12	144	16
			2	10	12	120	13
			2	8	12	96	11
			2	8	12	96	11
			2	10	12	120	13
			2	12	12	144	16
Normandy	New England	WB	1	6	12	72	8
			1	10	12	120	13
			1	12	12	144	16
			2	6	12	72	8
			2	10	12	120	13
			2	12	12	144	16
		EB	1	6	12	72	8
			1	10	12	120	13
			1	10	12	120	13
			1	10	12	120	13
			2	6	12	72	8
			2	10	12	120	13
			2	10	12	120	13
			2	10	12	120	13
			2	10	12	120	13
New England	Harlem	WB	1	10	12	120	13
			1	10	12	120	13
			2	10	12	120	13
			2	10	12	120	13

ROUTE: 79th St. (Cicero Ave. to I-294)

CROSS STREETS		DIRECTION (EB/WB) (NB/SB)	LANE NO. (1, 2, 3)	PAVEMENT PATCH WIDTH	PAVEMENT PATCH LENGTH	REPAIR AREA (SQ FT)	REPAIR AREA (SQ YD)
FROM	TO						
		EB	1	10	12	120	13
			2	10	12	120	13
Harlem	Oketo	WB	1	10	12	120	13
			1	10	12	120	13
			2	10	12	120	13
			2	12	12	144	16
		EB	1	10	12	120	13
			1	10	12	120	13
			1	10	12	120	13
			2	10	12	120	13
			2	10	12	120	13
Oketo	Bridge	WB	1	20	12	240	27
			1	10	12	120	13
			1	10	12	120	13
			1	8	12	96	11
			1	20	12	240	27
			1	10	12	120	13
			1	30	12	360	40
			1	10	12	120	13
			1	10	12	120	13
			1	25	12	300	33
			2	10	12	120	13
			2	10	12	120	13
			2	20	12	240	27
			2	10	12	120	13
			2	10	12	120	13
			2	10	12	120	13
			2	10	12	120	13
			2	30	12	360	40
			2	10	12	120	13
			2	10	12	120	13
			2	10	12	120	13
			2	30	12	360	40
			2	10	12	120	13
			2	10	12	120	13
			2	6	12	72	8
			2	10	12	120	13
			2	10	12	120	13
		EB	1	20	12	240	27
			1	10	12	120	13
			1	10	12	120	13
			1	10	12	120	13
			1	8	12	96	11
			1	20	12	240	27
			1	10	12	120	13
			1	30	12	360	40
			1	10	12	120	13
			1	10	12	120	13
			1	25	12	300	33
		WB	2	10	12	120	13
			2	10	12	120	13
			2	20	12	240	27
			2	10	12	120	13
			2	10	12	120	13
			2	10	12	120	13
			2	10	12	120	13
			2	30	12	360	40
			2	10	12	120	13
			2	10	12	120	13
			2	30	12	360	40
			2	10	12	120	13
Bridge	78th St.	WB	1	10	12	120	13
			1	30	12	360	40
			1	10	12	120	13

CONTINUED ON NEXT SHEET

FILE NAME =	USER NAME = wilgreendp	DESIGNED -	REVISED -	STATE OF ILLINOIS DEPARTMENT OF TRANSPORTATION	PATCHING SCHEDULE 79TH ST.	F.A. RTE.	SECTION	COUNTY	TOTAL SHEETS	SHEET NO.
ct:\pwork\PM\DOT\WILGREENDP\0183621\design.dgn	DRAWN -	REVISED -	VAR.			2010-014 RS	COOK	34	9	
PLOT SCALE = 100.0000' / IN.	CHECKED -	REVISED -	CONTRACT NO. 60K33							
PLOT DATE = 2/20/2010	DATE -	REVISED -	SCALE:			SHEET NO. OF SHEETS	STA. TO STA.	FED. ROAD DIST. NO. 1 ILLINOIS FED. AID PROJECT		

ROUTE: 79th St. (Cicero Ave. to I-294)									
CROSS STREETS		DIRECTION (EB/WB) (NB/SB)	LANE NO. (1, 2, 3)	PAVEMENT PATCH WIDTH	PAVEMENT PATCH LENGTH	REPAIR AREA (SQ FT)	REPAIR AREA (SQ YD)		
FROM	TO								
Bridge	78th St.	WB	1	10	12	120	13		
			1	25	12	300	33		
			1	10	12	120	13		
			1	10	12	120	13		
			2	10	12	120	13		
			2	10	12	120	13		
			2	10	12	120	13		
			2	20	12	240	27		
			2	10	12	120	13		
			2	10	12	120	13		
		EB		EB	1	10	12	120	13
					1	30	12	360	40
					1	10	12	120	13
					1	15	12	180	20
					1	15	12	180	20
					1	10	12	120	13
					1	10	12	120	13
					1	15	12	180	20
					2	10	12	120	13
					2	10	12	120	13
78th St.	Roberts	WB	1	10	12	120	13		
			1	10	12	120	13		
			1	12	12	144	16		
			1	6	12	72	8		
			2	6	12	72	8		
		EB		EB	2	12	12	144	16
					2	10	12	120	13
					2	10	12	120	13
					1	10	12	120	13
					1	6	12	72	8
Roberts	84th Ave.	WB	1	10	12	120	13		
			1	6	12	72	8		
			1	8	12	96	11		
			1	10	12	120	13		
			2	10	12	120	13		
		EB		EB	2	8	12	96	11
					2	6	12	72	8
					2	10	12	120	13
					2	10	12	120	13
					2	8	12	96	11
Roberts	84th Ave.	EB	1	10	12	120	13		
			1	10	12	120	13		
			1	6	12	72	8		
			1	10	12	120	13		
			2	10	12	120	13		
		WB		WB	2	8	12	96	11
					2	6	12	72	8
					2	10	12	120	13
					2	10	12	120	13
					2	10	12	120	13

ROUTE: 79th St. (Cicero Ave. to I-294)									
CROSS STREETS		DIRECTION (EB/WB) (NB/SB)	LANE NO. (1, 2, 3)	PAVEMENT PATCH WIDTH	PAVEMENT PATCH LENGTH	REPAIR AREA (SQ FT)	REPAIR AREA (SQ YD)		
FROM	TO								
84th Ave.	88th Ave.	WB	1	10	12	120	13		
			2	6	12	72	8		
			1	10	12	120	13		
			2	6	12	72	8		
			2	10	12	120	13		
		EB		EB	1	10	12	120	13
					1	6	12	72	8
					1	6	12	72	8
					2	10	12	120	13
					2	10	12	120	13
88th Ave	I-294	WB	1	10	12	120	13		
			1	10	12	120	13		
			1	6	12	72	8		
			1	6	12	72	8		
			2	6	12	72	8		
		EB		EB	2	10	12	120	13
					2	10	12	120	13
					2	12	12	144	16
					1	12	12	144	16
					1	6	12	72	8
			1	10	12	120	13		
			1	10	12	120	13		
			2	12	12	144	16		
			2	6	12	72	8		
			2	10	12	120	13		
			2	10	12	120	13		
			2	10	12	120	13		
			2	10	12	120	13		
			2	10	12	120	13		
			2	10	12	120	13		
TOTALS:						3908	4630		
						FT	SY		

Design.dgn 2/20/2010 8:19:03 AM User=wilgreendp

ROUTE: Archer Ave. / IL 171 (Roberts Rd. to 88th Ave.)

Cross Streets		Direction (EB/WB) (NB/SB)	Lane No. (1,2,3)	Pavement Patch Width (ft)	Pavement Path Length (ft)	Repair Area (SQ FT)	Repair Area (SQ YD)
From	To						
Roberts Rd	88th Ave	EB	L1	12	6	72	8
Roberts Rd	88th Ave	EB	L2	12	6	72	8
Roberts Rd	88th Ave	EB	L2	12	6	72	8
Roberts Rd	88th Ave	EB	L2	12	6	72	8
Roberts Rd	88th Ave	EB	L2	22	6	132	15
Roberts Rd	88th Ave	EB	L2	12	6	72	8
Roberts Rd	88th Ave	EB	L2	12	8	96	11
Roberts Rd	88th Ave	EB	L2	12	10	120	13
Roberts Rd	88th Ave	EB	L2	12	7	84	9
Roberts Rd	88th Ave	EB	L2	12	6	72	8
Roberts Rd	88th Ave	EB	L2	12	6	72	8
Roberts Rd	88th Ave	EB	L2	12	6	72	8
Roberts Rd	88th Ave	EB	L2	2	75	150	17
Roberts Rd	88th Ave	WB	L1	12	6	72	8
Roberts Rd	88th Ave	WB	L2	12	6	72	8
Roberts Rd	88th Ave	WB	L2	2	20	40	4
Roberts Rd	88th Ave	WB	L2	12	6	72	8
Roberts Rd	88th Ave	WB	L2	12	6	72	8
Roberts Rd	88th Ave	WB	L2	12	6	72	8
Roberts Rd	88th Ave	WB	L2	12	6	72	8
Roberts Rd	88th Ave	WB	L2	12	10	120	13
Roberts Rd	88th Ave	WB	L2	12	6	72	8
Roberts Rd	88th Ave	WB	L2	12	10	120	13
Roberts Rd	88th Ave	WB	L2	12	6	72	8
Roberts Rd	88th Ave	WB	L1	12	10	120	13
TOTALS:				256		242	
				FT		SY	

ROUTE: Archer Ave. / IL 171 (55th St. to 65th St.)

Cross Streets		Direction (EB/WB) (NB/SB)	Lane No. (1,2,3)	Pavement Patch Width (ft)	Pavement Path Length (ft)	Repair Area (SQ FT)	Repair Area (SQ YD)
From	To						
55th	59th	SB	L1/L2	2	150	300	33
55th	59th	SB	L2	12	6	72	8
55th	59th	SB	L2	12	6	72	8
55th	59th	SB	L2	12	59	708	79
55th	59th	SB	L1	2	40	80	9
55th	59th	NB	L1	12	8	96	11
55th	59th	NB	L1/L2	2	50	100	11
55th	59th	NB	L2	12	6	72	8
55th	59th	NB	L1	12	6	72	8
55th	59th	NB	L2	12	6	72	8
55th	59th	NB	L1/L2	2	150	300	33
55th	59th	NB	L2	12	50	600	67
TOTALS:					537		283
					FT		SY

FILE NAME =
c:\pwork\pwork\WILGREENDOT\0183621\design.dgn

USER NAME = wilgreendp
DESIGNED -
DRAWN -
PLOT SCALE = 100.0000' / IN.
PLOT DATE = 2/20/2010

DESIGNED -
DRAWN -
CHECKED -
DATE -

REVISED -
REVISED -
REVISED -
REVISED -

**STATE OF ILLINOIS
DEPARTMENT OF TRANSPORTATION**

**PATCHING SCHEDULE
ARCHER AVE.**

SCALE: SHEET NO. OF SHEETS STA. TO STA.

F.A. RTE.	SECTION	COUNTY	TOTAL SHEETS	SHEET NO.
VAR.	2010-014 RS	COOK	34	11
FED. ROAD DIST. NO. 1 ILLINOIS FED. AID PROJECT			CONTRACT NO. 60K33	

ROUTE: Cicero Ave. (71st St. to 87th St.)

CROSS STREETS		DIRECTION (EB/WB) (NB/SB)	LANE NO. (1, 2, 3)	PAVEMENT PATCH WIDTH	PAVEMENT PATCH LENGTH	REPAIR AREA (SQ FT)	REPAIR AREA (SQ YD)				
FROM	TO										
71st ST	State Rd.	SB	2	5	12	60	7				
			1	3	12	36	4				
			2	3	12	36	4				
			1	3	12	36	4				
			2	3	12	36	4				
			2	3	12	36	4				
			1	5	12	60	7				
			Turn	10	12	120	13				
			2&Turn	4	8	32	4				
			CL	4	12	48	5				
		NB	2	20	12	240	27				
			3	20	12	240	27				
			Turn	10	12	120	13				
			1	10	12	120	13				
			2	10	12	120	13				
			2&3	4	20	80	9				
			1	15	12	180	20				
			2	20	12	240	27				
			3	20	12	240	27				
			State Rd.	74th Pl	SB	1	5	12	60	7	
CL	4	20				80	9				
3	20	12				240	27				
2	5	12				60	7				
3	5	12				60	7				
2	3	12				36	4				
NB	1&2	4				20	80	9			
	2	10				12	120	13			
	2	10				12	120	13			
	2	5				12	60	7			
	3	5			12	60	7				
	1	20			12	240	27				
	1	20			12	240	27				
	CL	4			100	400	44				
	1	10			12	400	44				
	2	5			12	60	7				
74th Pl	76th St.	SB			1	10	12	120	13		
					2	5	12	60	7		
					NB	1	20	12	240	27	
						1	5	12	60	7	
			2	5		12	60	7			
			2	20		12	240	27			
			2	30		12	360	40			
			Turn	10		12	120	13			
			76th St.	Burbank		SB	CL	2	30	60	7
							2	5	12	60	7
		2					3	12	36	4	
		3					5	20	100	11	
		1			5		12	60	7		
		NB			3	5	12	60	7		
					1	20	12	240	27		
					2	20	12	240	27		
					3	3	12	36	4		
					1	50	12	600	67		
		Turn	5	10	50	6					

ROUTE: Cicero Ave. (71st St. to 87th St.)

CROSS STREETS		DIRECTION (EB/WB) (NB/SB)	LANE NO. (1, 2, 3)	PAVEMENT PATCH WIDTH	PAVEMENT PATCH LENGTH	REPAIR AREA (SQ FT)	REPAIR AREA (SQ YD)			
FROM	TO									
Burbank	78th St.	SB	2	20	12	240	27			
			3	20	12	240	27			
			2	5	12	60	7			
			2	5	12	60	7			
			2	20	12	240	27			
			2	3	12	36	4			
			3	3	12	36	4			
			78th St.	79th St.	SB	1	3	12	36	4
						2	10	12	120	13
						2&3	4	12	48	5
		Turn				3	12	36	4	
		3				5	12	60	7	
		NB			Turn	10	20	200	22	
					2	3	12	36	4	
					2	3	12	36	4	
					1	15	12	180	20	
					2	15	12	180	20	
		79th St.	83rd St.	SB	3	5	12	60	7	
					3	5	12	60	7	
					3	5	12	60	7	
1	5				12	60	7			
3	5				12	60	7			
3	20				12	240	27			
3	20				12	240	27			
2	10				12	120	13			
NB	3				20	12	240	27		
	3				30	12	360	40		
	2			50	12	600	67			
	1			10	12	120	13			
	2			10	12	120	13			
	3			5	12	60	7			
	3			10	12	120	13			
	3			15	12	180	20			
	2			5	12	60	7			
	2			15	12	180	20			
83rd St	85th St.			SB	2	5	12	60	7	
					3	5	12	60	7	
		2	5		12	60	7			
		2	5		12	60	7			
		1	3		12	36	4			
		2	3		12	36	4			
		1	10		12	120	13			
		2	10		12	120	13			
		3	10		12	120	13			
		3	5		30	150	17			
		NB	3	5	30	150	17			
			1	5	12	60	7			
			2	20	12	240	27			
			3	20	12	240	27			
			1	5	12	60	7			
			2	5	12	60	7			
			3	5	12	60	7			
			2	5	12	60	7			
			3	5	12	60	7			
			3	5	12	60	7			

CONTINUED ON NEXT SHEET

FILE NAME =	USER NAME = wilgreendp	DESIGNED -	REVISED -	STATE OF ILLINOIS DEPARTMENT OF TRANSPORTATION	PATCHING SCHEDULE CICERO AVE.	F.A. RTE.	SECTION	COUNTY	TOTAL SHEETS	SHEET NO.
ct:\p\work\PWIDOT\WILGREENDP\01836210\dsgn.dgn	DRAWN -	REVISED -	VAR.			2010-014 RS	COOK	34	13	
PLOT SCALE = 100.0000' / IN.	CHECKED -	REVISED -	CONTRACT NO. 60K33							
PLOT DATE = 2/20/2010	DATE -	REVISED -	SCALE:			SHEET NO.	OF	SHEETS	STA.	TO

ROUTE: Cicero Ave. (71st St. to 87th St.)

CROSS STREETS		DIRECTION (EB/WB) (NB/SB)	LANE NO. (1, 2, 3)	PAVEMENT PATCH WIDTH	PAVEMENT PATCH LENGTH	REPAIR AREA (SQ FT)	REPAIR AREA (SQ YD)
FROM	TO						
			CL	4	20	80	9
			2	20	12	240	27
			2	20	12	240	27
			3	3	12	36	4
			2	3	12	36	4
			3	3	12	36	4
			2	5	12	60	7
83rd St	85th St.	SB	3	5	12	60	7
			CL	4	50	200	22
			3	10	12	120	13
			1	5	12	60	7
		NB	1&2	4	40	160	18
			1	3	12	36	4
			2	5	12	60	7
			3	10	12	120	13
85th St.	86th St.	SB	1	5	12	60	7
			2	5	12	60	7
			3	5	12	60	7
			2	3	12	36	4
			3	3	12	36	4
			1	3	12	36	4
			2	20	12	240	27
			1&2	4	50	200	22
			2	3	12	36	4
			1&2	4	100	400	44
			2	30	12	360	40
			3	5	12	60	7
			2	3	12	36	4
			3	5	12	60	7
		*Rutt	2	10	12	120	13
		NB	1	3	10	30	3
			2	3	10	30	3
86th St.	87th St.	SB	2	120	12	1440	160
			1&2	4	180	720	80
			3	50	12	600	67
			TURN	5	9	45	5
			TURN	5	9	45	5
			1	5	12	60	7
			2	5	12	60	7
			3	5	12	60	7
			TURN	5	9	45	5
			TURN	5	9	45	5
			TURN	10	9	90	10
		NB	2	5	12	60	7
			2	8	12	96	11
			2	5	12	60	7
			3	3	12	36	4
			2	50	12	600	67
			1	3	12	36	4
			2	3	12	36	4
			3	3	12	36	4

TOTALS: 2573 FT 2530 SY

FILE NAME =	USER NAME = wilgreendp	DESIGNED -	REVISED -
c:\pwork\p\WIDOT\WILGREENDP\0183621\0183621.dgn	design.dgn	DRAWN -	REVISED -
PLOT SCALE = 100.0000' / IN.		CHECKED -	REVISED -
PLOT DATE = 2/20/2010		DATE -	REVISED -

STATE OF ILLINOIS
DEPARTMENT OF TRANSPORTATION

PATCHING SCHEDULE
CICERO AVE.

SCALE: SHEET NO. OF SHEETS STA. TO STA.

F.A. RTE.	SECTION	COUNTY	TOTAL SHEETS	SHEET NO.
VAR.	2010-014 RS	COOK	34	14
FED. ROAD DIST. NO. 1 ILLINOIS FED. AID PROJECT			CONTRACT NO. 60K33	

ROUTE: East Ave. (55th St. to Joliet Rd.)

CROSS STREETS		DIRECTION (EB/WB) (NB/SB)	LANE NO. (1, 2, 3)	PAVEMENT PATCH WIDTH	PAVEMENT PATCH LENGTH	REPAIR AREA (SQ FT)	REPAIR AREA (SQ YD)
FROM	TO						
North Bound	55th to Joliet	NB	2	12	20	240	27
		NB	2	12	15	180	20
		NB	1	12	30	360	40
		NB	2	12	15	180	20
		NB	2	12	75	900	100
South Bound	55th to Joliet	NB	1	12	30	360	40
		SB	1	12	60	720	80
		SB	2	12	15	180	20
		SB	2	12	15	180	20
		SB	1	12	70	840	93
		SB	1	12	40	480	53
		SB	1	12	30	360	40
		SB	1	12	20	240	27
		SB	2	12	20	240	27
		SB	1	12	20	240	27
TOTALS:					495	661	
					FT	SY	

ROUTE: Oak Park Ave. NB (31st St. to 50' South of Traffic Signal)

CROSS STREETS		DIRECTION (EB/WB) (NB/SB)	LANE NO. (1, 2, 3)	PAVEMENT PATCH WIDTH	PAVEMENT PATCH LENGTH	REPAIR AREA (SQ FT)	REPAIR AREA (SQ YD)
FROM	TO						
31st Street	50 feet South of Signal	NB	1	19	39	741	82
TOTALS:					39	82	
					FT	SY	

ROUTE: Harlem Ave. (Ogden Ave. to 79th St.)

CROSS STREETS		DIRECTION (EB/WB) (NB/SB)	LANE NO. (1, 2, 3)	PAVEMENT PATCH WIDTH	PAVEMENT PATCH LENGTH	REPAIR AREA (SQ FT)	REPAIR AREA (SQ YD)
FROM	TO						
Ogden		SB	1	12	15	180	20
		SB	1	12	20	240	27
		SB	1	12	15	180	20
		SB	2	12	20	240	27
		SB	2	12	15	180	20
Joliet Rd		SB	1	12	15	180	20
47th		SB	1	12	20	240	27
		SB	2	12	20	240	27
		SB	1	12	20	240	27
		SB	2	12	20	240	27
		SB	1	12	15	180	20
		SB	2	12	15	180	20
		SB		2	200	400	45
Ship canal bridge							
I-55 bridge end			1	12	15	180	20
		SB	2	12	15	180	20
		SB	1	12	15	180	20
		SB	2	12	15	180	20
		SB	1	12	15	180	20
		SB	2	12	15	180	20
		SB	1	12	20	240	27
		SB	2	12	20	240	27
		SB	1	12	25	300	33
		SB	2	12	25	300	33
55th		SB	1	12	30	360	40
		SB	2	12	30	360	40
		SB	1	12	20	240	27
		SB	2	12	20	240	27
		SB	1	12	30	360	40
		SB	2	12	30	360	40
60th		SB	1	12	15	180	20
		SB	2	12	15	180	20
		SB	1	12	20	240	27
		SB	2	12	20	240	27
		SB	1	12	10	120	13
		SB	1	12	15	180	20
		SB	1	12	20	240	27
		SB	1	12	12	144	16
		SB	1	12	15	180	20
71th		SB	1	12	15	180	20
		SB	2	12	15	180	20
		SB	1	12	25	300	33
		SB	2	12	25	300	33
		SB	1	12	20	240	27
		SB	2	12	12	144	16
		SB	2	12	30	360	40
		SB	2	12	10	120	13
		SB	1	12	100	1200	133
		SB	2	12	100	1200	133
79th							
TOTALS:						1244	1439
						FT	SY

ROUTE: Harlem Ave. (North Ave. to Lake St.)

CROSS STREETS		DIRECTION (EB/WB) (NB/SB)	LANE NO. (1, 2, 3)	PAVEMENT PATCH WIDTH	PAVEMENT PATCH LENGTH	REPAIR AREA (SQ FT)	REPAIR AREA (SQ YD)
FROM	TO						
Lake	Prairie	NB	2	6	6	36	4
Chicago	Erie	NB	2	4	6	24	3
Augusta	Thomas	NB	2	15	15	225	25
Augusta	Thomas	NB	2	20	25	500	56
Berkshire	Greenfield	NB	2	5	5	25	3
Greenfield	LeMoyne	NB	2	10	12	120	13
Greenfield	LeMoyne	SB	2	6	15	90	10
Augusta	Iowa	SB	2	10	15	150	17
Ontario	Erie	SB	2	10	10	100	11
Chicago	Iowa	SB	1	12	30	360	40
TOTALS:						139	181
						FT	SY

ROUTE: Long Arm Ramp (S/B LaGrange Rd. to E/B 79th St. - 88th Ave)

CROSS STREETS		DIRECTION (EB/WB) (NB/SB)	LANE NO. (1, 2, 3)	PAVEMENT PATCH WIDTH	PAVEMENT PATCH LENGTH	REPAIR AREA (SQ FT)	REPAIR AREA (SQ YD)
FROM	TO						
S/B LaGrange to E/B 79th - 88th Ave		EB	2	13	6	78	9
		EB	2	13	10	130	14
		EB	1	13	10	130	14
		EB	1	13	10	130	14
		EB	1	13	6	78	9
		EB	1	13	6	78	9
		EB	1	13	10	130	14
		EB	2	13	10	130	14
		EB	2	13	6	78	9
		EB	1	13	6	78	9
		EB	1	13	10	130	14
		EB	1	13	15	195	22
		EB	2	13	10	130	14
		EB	1	13	50	650	72
		EB	2	13	25	325	36
TOTALS:					190	274	
					FT	SY	

ROUTE: Long Arm Ramp (S/B LaGrange Rd. to E/B Archer Ave. - 88th Ave)

CROSS STREETS		DIRECTION (EB/WB) (NB/SB)	LANE NO. (1, 2, 3)	PAVEMENT PATCH WIDTH	PAVEMENT PATCH LENGTH	REPAIR AREA (SQ FT)	REPAIR AREA (SQ YD)
FROM	TO						
S/B LaGrange to E/B Archer - 88th Ave		EB	1	13	10	130	14
		EB	2	13	10	130	14
		EB	2	13	10	130	14
		EB	2	13	6	78	9
		EB	2	13	6	78	9
		EB	1	13	10	130	14
		EB	2	13	15	195	22
		EB	1	13	6	78	9
TOTALS:					73	105	
					FT	SY	

ROUTE: Roosevelt Rd. (Westchester Blvd. to 1st Ave.)

CROSS STREETS		DIRECTION (EB/MB) (NB/SB)	LANE NO. (1, 2, 3)	PAVEMENT PATCH WIDTH	PAVEMENT PATCH LENGTH	REPAIR AREA (SQ FT)	REPAIR AREA (SQ YD)
FROM	TO						
1st Ave.	22nd	EB	2	6	10	84	9
South of Bridge		EB	2,1	24	12	288	32
23 rd av.		EB	2	11	200	2200	244
18th		EB	2	8	10	84	9
16th		EB	2	8	15	120	13
16th		EB	1,2	16	12	192	21
14th		EB	2	5	5	25	3
5th		WB	2	25	15	375	42
7th		WB	1	8	100	800	89
10th		WB	2	6	6	36	4
intersection @1st westchester		EB	1,2	24	8	192	21
		EB	2	10	150	1500	167
20th		EB	1,2	25	25	625	69
22nd		EB	1,2	25	13	325	36
22nd		EB	1,2	24	10	240	27
22nd		EB	2	5	10	50	6
18th		EB	2	7	10	70	8
22nd		EB	2	10	13	130	14
22nd		EB	2	6	12	72	8
22nd		EB	2	8	14	112	12
22nd		EB	2	11	10	110	12
22nd		EB	2	6	7	42	5
22nd		EB	2	9	6	54	6
18th		EB	2	7	11	77	9
18th		EB	2	8	12	96	11
TOTALS:					696	878	
					FT	SY	

ROUTE: Willow Springs Rd. (Archer Ave. to Corcoran Rd.) - HMA Section

CROSS STREETS		DIRECTION (EB/MB) (NB/SB)	LANE NO. (1, 2, 3)	PAVEMENT PATCH WIDTH	PAVEMENT PATCH LENGTH	REPAIR AREA (SQ FT)	REPAIR AREA (SQ YD)
FROM	TO						
Asphalt S. of Bridge		NB	1	12	80	960	107
		NB	2	12	80	960	107
		SB	2	12	80	960	107
TOTALS:					240	321	
					FT	SY	

ROUTE: State Rd. (79th St. to Cicero Ave.)

CROSS STREETS		DIRECTION (EB/MB) (NB/SB)	LANE NO. (1, 2, 3)	PAVEMENT PATCH WIDTH	PAVEMENT PATCH LENGTH	REPAIR AREA (SQ FT)	REPAIR AREA (SQ YD)		
FROM	TO								
79th St.	Lorel	NE	1	10	11	110	12		
			1	10	11	110	12		
			1	10	11	110	12		
			1	10	11	110	12		
			2	10	11	110	12		
			2	10	11	110	12		
			2	10	11	110	12		
		SW			1	10	11	110	12
					1	10	11	110	12
					1	10	11	110	12
					2	10	11	110	12
					2	10	11	110	12
					2	10	11	110	12
					2	10	11	110	12
Lorel	Laramie	NE	1	10	11	110	12		
			1	10	11	110	12		
			1	10	11	110	12		
			1	10	11	110	12		
			2	10	11	110	12		
			2	10	11	110	12		
			2	10	11	110	12		
		SW			1	10	10	100	11
					1	10	10	100	11
					2	10	10	100	11
					2	10	10	100	11
					2	10	10	100	11
					2	10	10	100	11
					2	10	10	100	11
Laramie	76th St.	NE	1	2	60	120	13		
			1	12	11	132	15		
			1	12	11	132	15		
			1	12	11	132	15		
			1	12	11	132	15		
			1	2	350	700	78		
			1	2	11	22	2		
			1	12	11	132	15		
			1	2	1200	2400	267		
			1	12	11	132	15		
			1	12	11	132	15		
			2	12	11	132	15		
			2	20	11	220	24		
			2	10	11	110	12		
		2	10	11	110	12			
		2	10	11	110	12			
		2	10	11	110	12			
		SW			1	11	10	110	12
					1	11	40	440	49
					1	11	12	132	15
					1	11	12	132	15
					1	11	12	132	15
					1	11	6	66	7
					1	11	6	66	7
					1	11	12	132	15
					1	11	12	132	15
					2	11	12	132	15
					2	11	12	132	15
2	11				12	132	15		
2	2				300	600	67		
2	11				12	132	15		
2	11	6	66	7					
2	11	12	132	15					
2	11	12	132	15					
2	11	12	132	15					

TOTALS: 2568 FT 1204 SY

FILE NAME =	USER NAME = wilgreendp	DESIGNED -	REVISED -
c:\pw\work\PWIDOT\WILGREENDP\d0183621\0	esign.dgn	DRAWN -	REVISED -
PLOT SCALE = 100.0000 / IN.	CHECKED -	REVISED -	REVISED -
PLOT DATE = 2/20/2010	DATE -	REVISED -	REVISED -

STATE OF ILLINOIS
DEPARTMENT OF TRANSPORTATION

PATCHING SCHEDULE
STATE RD.

SCALE: SHEET NO. OF SHEETS STA. TO STA.

F.A. RTE.	SECTION	COUNTY	TOTAL SHEETS	SHEET NO.
VAR.	2010-014 RS	COOK	34	19
FED. ROAD DIST. NO. 1 ILLINOIS FED. AID PROJECT			CONTRACT NO. 60K33	

ROUTE: NB I-55 (Stevenson Expy.) (Kedzie Ave. to Cook/DuPage County Line)

CROSS STREETS		DIRECTION (EB/WB) (NB/SB)	LANE NO. (1, 2, 3)	PAVEMENT PATCH WIDTH	PAVEMENT PATCH LENGTH	REPAIR AREA (SQ FT)	REPAIR AREA (SQ YD)
FROM	TO						
County Line Rd	1st Ave	NB	3	12	6	72	8
County Line Rd	1st Ave	NB	2	12	12	144	16
County Line Rd	1st Ave	NB	3	12	12	144	16
County Line Rd	1st Ave	NB	1 & 2	2	100	200	22
County Line Rd	1st Ave	NB	2	12	10	120	13
County Line Rd	1st Ave	NB	1 & 2	2	30	60	7
County Line Rd	1st Ave	NB	1 & 2	2	440	880	98
County Line Rd	1st Ave	NB	2 & 3	13	80	1040	116
County Line Rd	1st Ave	NB	2	12	15	180	20
County Line Rd	1st Ave	NB	3	12	15	180	20
County Line Rd	1st Ave	NB	1	12	6	72	8
County Line Rd	1st Ave	NB	2	12	20	240	27
County Line Rd	1st Ave	NB	3	12	6	72	8
County Line Rd	1st Ave	NB	2	12	50	600	67
County Line Rd	1st Ave	NB	2	12	12	144	16
County Line Rd	1st Ave	NB	3	12	6	72	8
County Line Rd	1st Ave	NB	1	12	15	180	20
County Line Rd	1st Ave	NB	3	12	8	96	11
County Line Rd	1st Ave	NB	3	12	10	120	13
County Line Rd	1st Ave	NB	2	12	25	300	33
County Line Rd	1st Ave	NB	2	12	25	300	33
County Line Rd	1st Ave	NB	3	12	8	96	11
County Line Rd	1st Ave	NB	2	12	8	96	11
County Line Rd	1st Ave	NB	2	12	8	96	11
County Line Rd	1st Ave	NB	2	12	10	120	13
County Line Rd	1st Ave	NB	3	12	20	240	27
County Line Rd	1st Ave	NB	2	12	12	144	16
County Line Rd	1st Ave	NB	3	12	10	120	13
County Line Rd	1st Ave	NB	2	12	6	72	8
County Line Rd	1st Ave	NB	2 & 3	2	80	160	18
County Line Rd	1st Ave	NB	2 & 3	2	80	160	18
County Line Rd	1st Ave	NB	2 & 3	2	80	160	18
County Line Rd	1st Ave	NB	1	12	6	72	8
County Line Rd	1st Ave	NB	2	12	6	72	8
County Line Rd	1st Ave	NB	1	12	6	72	8
County Line Rd	1st Ave	NB	2	12	20	240	27
County Line Rd	1st Ave	NB	3	12	20	240	27
County Line Rd	1st Ave	NB	3	12	8	96	11
County Line Rd	1st Ave	NB	2	12	20	240	27
County Line Rd	1st Ave	NB	2	12	20	240	27
County Line Rd	1st Ave	NB	2	12	200	2400	267
County Line Rd	1st Ave	NB	1 & 2	2	40	80	9
County Line Rd	1st Ave	NB	1 & 2	2	80	160	18
County Line Rd	1st Ave	NB	2	12	8	96	11
County Line Rd	1st Ave	NB	1 & 2	2	200	400	44
1st Ave	Harlem	NB	2 & 3	2	400	800	89
1st Ave	Harlem	NB	1 & 2	2	80	160	18
1st Ave	Harlem	NB	2 & 3	2	200	400	44
1st Ave	Harlem	NB	1 & 2	2	160	320	36
1st Ave	Harlem	NB	1 & 2	2	40	80	9
Harlem	Central	NB	3	12	8	96	11
Harlem	Central	NB	2 & 3	2	160	320	36
Harlem	Central	NB	2 & 3	2	160	320	36
Harlem	Central	NB	2 & 3	2	40	80	9
Harlem	Central	NB	3	12	10	120	13
Harlem	Central	NB	3	12	20	240	27
Harlem	Central	NB	3	12	10	120	13
Harlem	Central	NB	3	12	10	120	13
Harlem	Central	NB	3	12	30	360	40
Harlem	Central	NB	3	12	10	120	13
Harlem	Central	NB	2	12	10	120	13
Harlem	Central	NB	3 & Exit	2	240	480	53
Central	Cicero	NB	2 & 3	2	40	80	9
Central	Cicero	NB	2	12	10	120	13

ROUTE: NB I-55 (Stevenson Expy.) (Kedzie Ave. to Cook/DuPage County Line)

CROSS STREETS		DIRECTION (EB/WB) (NB/SB)	LANE NO. (1, 2, 3)	PAVEMENT PATCH WIDTH	PAVEMENT PATCH LENGTH	REPAIR AREA (SQ FT)	REPAIR AREA (SQ YD)
FROM	TO						
Central	Cicero	NB	1 & 2	2	240	480	53
Central	Cicero	NB	3 & Exit	2	560	1120	124
Central	Cicero	NB	1 & 2	2	120	240	27
Central	Cicero	NB	3	12	6	72	8
Central	Cicero	NB	1 & 2	2	40	80	9
Central	Cicero	NB	2	12	8	96	11
Central	Cicero	NB	1	12	10	120	13
Central	Cicero	NB	2	12	10	120	13
Central	Cicero	NB	3	12	10	120	13
Central	Cicero	NB	2	12	10	120	13
Central	Cicero	NB	2	12	10	120	13
Cicero	Pulaski	NB	3	12	6	72	8
Cicero	Pulaski	NB	3	12	15	180	20
Cicero	Pulaski	NB	3	12	10	120	13
Cicero	Pulaski	NB	1 & 2	2	20	40	4
Cicero	Pulaski	NB	3	12	8	96	11
Cicero	Pulaski	NB	2	12	10	120	13
Cicero	Pulaski	NB	3	12	10	120	13
Cicero	Pulaski	NB	3	12	40	480	53
Cicero	Pulaski	NB	3	12	15	180	20
Cicero	Pulaski	NB	3	12	30	360	40
Cicero	Pulaski	NB	3	12	8	96	11
Cicero	Pulaski	NB	3	12	12	144	16
Cicero	Pulaski	NB	3	12	15	180	20
Cicero	Pulaski	NB	3	12	15	180	20
Cicero	Pulaski	NB	3 & Exit	2	180	360	40
Cicero	Pulaski	NB	3	12	6	72	8
Cicero	Pulaski	NB	3	12	6	72	8
Cicero	Pulaski	NB	3	12	6	72	8
Cicero	Pulaski	NB	3	12	6	72	8
Cicero	Pulaski	NB	1 & 2	2	100	200	22
Cicero	Pulaski	NB	2 & 3	2	80	160	18
Cicero	Pulaski	NB	1	12	15	180	20
Cicero	Pulaski	NB	1	12	20	240	27
Pulaski	Kedzie	NB	2 & 3	2	120	240	27
Pulaski	Kedzie	NB	2	12	6	72	8
Pulaski	Kedzie	NB	2	12	10	120	13
Pulaski	Kedzie	NB	3	12	10	120	13
Pulaski	Kedzie	NB	3	12	10	120	13
Pulaski	Kedzie	NB	1 & 2	2	40	80	9
Pulaski	Kedzie	NB	3	12	25	300	33
Pulaski	Kedzie	NB	3	12	6	72	8
Pulaski	Kedzie	NB	3	12	8	96	11
Pulaski	Kedzie	NB	3 & Entr	2	560	1120	124
Pulaski	Kedzie	NB	2	12	15	180	20
Pulaski	Kedzie	NB	3	12	6	72	8
Pulaski	Kedzie	NB	3	12	10	120	13
Pulaski	Kedzie	NB	2	12	10	120	13
Pulaski	Kedzie	NB	2 & 3	2	40	80	9
Pulaski	Kedzie	NB	2 & 3	2	120	240	27
Pulaski	Kedzie	NB	3	12	8	96	11
Pulaski	Kedzie	NB	3	12	12	144	16
Pulaski	Kedzie	NB	2	12	6	72	8
Pulaski	Kedzie	NB	2 & 3	2	240	480	53
Pulaski	Kedzie	NB	2	12	10	120	13
Pulaski	Kedzie	NB	3	12	15	180	20
Pulaski	Kedzie	NB	1	12	25	300	33
Pulaski	Kedzie	NB	2	12	12	144	16
Pulaski	Kedzie	NB	3	12	20	240	27
Pulaski	Kedzie	NB	1 & 2	2	120	240	27

TOTALS: 6598 FT 2995 SY

FILE NAME =	USER NAME = wjgreendp	DESIGNED -	REVISED -	STATE OF ILLINOIS DEPARTMENT OF TRANSPORTATION	PATCHING SCHEDULE NB I-55 (STEVENSON EXPY)	F.A. RTE.	SECTION	COUNTY	TOTAL SHEETS	SHEET NO.	
ct\pwork\PWIDOT\WILGREENDP\0183621.D	esign.dgn	DRAWN -	REVISED -			VAR.	2010-014 RS	COOK	34	20	
PLOT SCALE = 100.0000 "/ IN.	CHECKED -	REVISED -	REVISED -			CONTRACT NO. 60K33					
PLOT DATE = 2/20/2010	DATE -	REVISED -	REVISED -			SCALE:	SHEET NO. OF SHEETS	STA.	TO STA.	FED. ROAD DIST. NO. 1	ILLINOIS FED. AID PROJECT

ROUTE: SB I-55 (Stevenson Expressway) (Kedzie Ave. to County Line)

CROSS STREETS		DIRECTION	LANE	PAVEMENT	PAVEMENT	REPAIR	REPAIR
FROM	TO	(EB/WB) (NB/SB)	NO. (1, 2, 3)	PATCH WIDTH	PATCH LENGTH	AREA (SQ FT)	AREA (SQ YD)
Kedzie	Pulaski	SB	3	12	20	240	27
Kedzie	Pulaski	SB	2	12	8	96	11
Kedzie	Pulaski	SB	3	12	20	240	27
Kedzie	Pulaski	SB	2	12	8	96	11
Kedzie	Pulaski	SB	2	12	6	72	8
Kedzie	Pulaski	SB	3	12	8	96	11
Kedzie	Pulaski	SB	1 & 2	2	120	240	27
Kedzie	Pulaski	SB	1 & 2	2	240	480	53
Kedzie	Pulaski	SB	2	12	10	120	13
Kedzie	Pulaski	SB	2 & 3	2	120	240	27
Kedzie	Pulaski	SB	1 & 2	2	120	240	27
Kedzie	Pulaski	SB	2	12	15	180	20
Kedzie	Pulaski	SB	3	12	40	480	53
Kedzie	Pulaski	SB	2	12	6	72	8
Kedzie	Pulaski	SB	3	12	30	360	40
Kedzie	Pulaski	SB	2	12	6	72	8
Kedzie	Pulaski	SB	3&Exit	0 to 16	160	1280	142
Kedzie	Pulaski	SB	2 & 3	2	20	40	4
Kedzie	Pulaski	SB	2	12	8	96	11
Kedzie	Pulaski	SB	2	12	60	720	80
Kedzie	Pulaski	SB	1 & 2	2	15	30	3
Kedzie	Pulaski	SB	1	12	15	180	20
Kedzie	Pulaski	SB	1	12	6	72	8
Kedzie	Pulaski	SB	1	12	6	72	8
Kedzie	Pulaski	SB	1	12	6	72	8
Pulaski	Cicero	SB	3	12	10	120	13
Pulaski	Cicero	SB	2 & 3	2	50	100	11
Pulaski	Cicero	SB	2 & 3	2	60	120	13
Pulaski	Cicero	SB	2 & 3	2	80	160	18
Pulaski	Cicero	SB	3&Entr	2	280	560	62
Pulaski	Cicero	SB	3	12	12	144	16
Pulaski	Cicero	SB	2	12	8	96	11
Pulaski	Cicero	SB	2	12	10	120	13
Pulaski	Cicero	SB	3	12	15	180	20
Pulaski	Cicero	SB	3	12	15	180	20
Pulaski	Cicero	SB	2 & 3	2	360	720	80
Pulaski	Cicero	SB	1 & 2	2	40	80	9
Pulaski	Cicero	SB	3	12	8	96	11
Pulaski	Cicero	SB	3	12	10	120	13
Pulaski	Cicero	SB	2 & 3	2	80	160	18
Pulaski	Cicero	SB	3	12	12	144	16
Pulaski	Cicero	SB	3	12	8	96	11
Pulaski	Cicero	SB	3&Exit	2	240	480	53
Pulaski	Cicero	SB	1 & 2	2	80	160	18
Pulaski	Cicero	SB	2 & 3	2	160	320	36
Pulaski	Cicero	SB	3	12	8	96	11
Pulaski	Cicero	SB	1 & 2	2	240	480	53
Pulaski	Cicero	SB	1 & 2	2	40	80	9
Pulaski	Cicero	SB	2 & 3	2	80	160	18
Pulaski	Cicero	SB	2	12	14	168	19
Pulaski	Cicero	SB	1 & 2	2	100	200	22
Pulaski	Cicero	SB	2 & 3	2	80	160	18
Pulaski	Cicero	SB	1 & 2	2	50	100	11
Pulaski	Cicero	SB	1	12	6	72	8

ROUTE: SB I-55 (Stevenson Expressway) (Kedzie Ave. to County Line)

CROSS STREETS		DIRECTION	LANE	PAVEMENT	PAVEMENT	REPAIR	REPAIR
FROM	TO	(EB/WB) (NB/SB)	NO. (1, 2, 3)	PATCH WIDTH	PATCH LENGTH	AREA (SQ FT)	AREA (SQ YD)
Cicero	Central	SB	2 & 3	2	520	1040	116
Cicero	Central	SB	1 & 2	2	80	160	18
Cicero	Central	SB	2 & 3	2	40	80	9
Cicero	Central	SB	3&Entr	2	480	960	107
Cicero	Central	SB	2 & 3	2	80	160	18
Cicero	Central	SB	2 & 3	2	40	80	9
Cicero	Central	SB	2 & 3	2	160	320	36
Cicero	Central	SB	3	12	10	120	13
Cicero	Central	SB	2 & 3	2	640	1280	142
Cicero	Central	SB	3&Exit	2	200	400	44
Cicero	Central	SB	2	12	10	120	13
Cicero	Central	SB	2 & 3	2	40	80	9
Cicero	Central	SB	2 & 3	2	40	80	9
Cicero	Central	SB	2	12	12	144	16
Cicero	Central	SB	1 & 2	2	40	80	9
Cicero	Central	SB	2	12	40	480	53
Cicero	Central	SB	2	12	8	96	11
Cicero	Central	SB	2	12	8	96	11
Central	Harlem	SB	2	12	15	180	20
Central	Harlem	SB	2 & 3	2	360	720	80
Central	Harlem	SB	1 & 2	2	40	80	9
Central	Harlem	SB	2 & 3	2	80	160	18
Central	Harlem	SB	2 & 3	2	40	80	9
Central	Harlem	SB	1 & 2	2	40	80	9
Central	Harlem	SB	2 & 3	2	480	960	107
Central	Harlem	SB	2 & 3	2	120	240	27
Central	Harlem	SB	2 & 3	2	120	240	27
Central	Harlem	SB	2	12	10	120	13
Central	Harlem	SB	1 & 2	2	40	80	9
Central	Harlem	SB	1 & 2	2	40	80	9
Central	Harlem	SB	2	12	20	240	27
Central	Harlem	SB	2 & 3	2	80	160	18
Central	Harlem	SB	2 & 3	2	280	560	62
Central	Harlem	SB	1 & 2	2	50	100	11
Central	Harlem	SB	1 & 2	2	80	160	18
Central	Harlem	SB	3	12	10	120	13
Central	Harlem	SB	3 & Exit	2	280	560	62
Central	Harlem	SB	1 & 2	2	20	40	4
Central	Harlem	SB	3	12	8	96	11
Central	Harlem	SB	1 & 2	2	20	40	4
Central	Harlem	SB	1 & 2	2	20	40	4
Central	Harlem	SB	3	12	8	96	11
Harlem	1st Ave	SB	2	12	15	180	20
Harlem	1st Ave	SB	2	12	12	144	16
Harlem	1st Ave	SB	2	12	8	96	11
Harlem	1st Ave	SB	3	12	8	96	11
Harlem	1st Ave	SB	Exit	12	8	96	11
Harlem	1st Ave	SB	1 & 2	2	360	720	80
Harlem	1st Ave	SB	1 & 2	2	120	240	27
Harlem	1st Ave	SB	1 & 2	2	120	240	27
1st Ave	LaGrange	SB	3	12	10	120	13
1st Ave	LaGrange	SB	2	12	15	180	20
1st Ave	LaGrange	SB	3	12	15	180	20
1st Ave	LaGrange	SB	2	12	15	180	20
1st Ave	LaGrange	SB	3	12	15	180	20

CONTINUED ON NEXT SHEET

FILE NAME =	USER NAME = wlgreendp	DESIGNED -	REVISED -	STATE OF ILLINOIS DEPARTMENT OF TRANSPORTATION	PATCHING SCHEDULE SB I-55 (STEVENSON EXPY.)	F.A. RTE.	SECTION	COUNTY	TOTAL SHEETS	SHEET NO.
ct:\pwork\PWIDOT\WILGREENDP\0183621\design.dgn	DRAWN -	REVISED -	VAR.			2010-014 RS	COOK	34	21	
PLOT SCALE = 1/8" = 100.0000' / IN.	CHECKED -	REVISED -	CONTRACT NO. 60K33							
PLOT DATE = 2/20/2010	DATE -	REVISED -	SCALE:			SHEET NO. OF SHEETS	STA. TO STA.	FED. ROAD DIST. NO. 1	ILLINOIS	FED. AID PROJECT

ROUTE: SB I-55 (Stevenson Expressway) (Kedzie Ave. to County Line)

CROSS STREETS		DIRECTION (EB/WB) (NB/SB)	LANE NO. (1, 2, 3)	PAVEMENT PATCH WIDTH	PAVEMENT PATCH LENGTH	REPAIR AREA (SQ FT)	REPAIR AREA (SQ YD)
FROM	TO						
1st Ave	LaGrange	SB	1	12	15	180	20
1st Ave	LaGrange	SB	2	12	15	180	20
1st Ave	LaGrange	SB	3	12	20	240	27
1st Ave	LaGrange	SB	2	12	10	120	13
1st Ave	LaGrange	SB	2 & 3	2	40	80	9
1st Ave	LaGrange	SB	2	12	10	120	13
1st Ave	LaGrange	SB	1 & 2	2	40	80	9
1st Ave	LaGrange	SB	1	12	6	72	8
1st Ave	LaGrange	SB	1 & 2	2	80	160	18
1st Ave	LaGrange	SB	1 & 2	2	560	1120	124
1st Ave	LaGrange	SB	3	12	12	144	16
1st Ave	LaGrange	SB	1 & 2	2	160	320	36
1st Ave	LaGrange	SB	2	12	20	240	27
1st Ave	LaGrange	SB	2	12	8	96	11
1st Ave	LaGrange	SB	3	12	8	96	11
1st Ave	LaGrange	SB	1 & 2	2	80	160	18
1st Ave	LaGrange	SB	1 & 2	2	240	480	53
1st Ave	LaGrange	SB	3	12	8	96	11
1st Ave	LaGrange	SB	2	12	6	72	8
1st Ave	LaGrange	SB	2	12	12	144	16
1st Ave	LaGrange	SB	2	12	10	120	13
1st Ave	LaGrange	SB	2 & 3	2	20	40	4
1st Ave	LaGrange	SB	1 & 2	2	20	40	4
1st Ave	LaGrange	SB	1 & 2	2	80	160	18
1st Ave	LaGrange	SB	1	12	15	180	20
1st Ave	LaGrange	SB	2	12	15	180	20
1st Ave	LaGrange	SB	3	12	15	180	20
1st Ave	LaGrange	SB	1	12	6	72	8
1st Ave	LaGrange	SB	2	12	6	72	8
1st Ave	LaGrange	SB	3	12	6	72	8
1st Ave	LaGrange	SB	1	12	12	144	16
LaGrange	County Line Rd	SB	2	12	6	72	8
LaGrange	County Line Rd	SB	3	12	6	72	8
LaGrange	County Line Rd	SB	2	12	12	144	16
LaGrange	County Line Rd	SB	2	12	6	72	8
LaGrange	County Line Rd	SB	2	12	12	144	16
LaGrange	County Line Rd	SB	2	12	6	72	8
LaGrange	County Line Rd	SB	2	12	6	72	8
LaGrange	County Line Rd	SB	3	12	6	72	8
LaGrange	County Line Rd	SB	2	12	6	72	8
LaGrange	County Line Rd	SB	2	12	6	72	8
LaGrange	County Line Rd	SB	2	12	20	240	27
LaGrange	County Line Rd	SB	2	12	20	240	27
LaGrange	County Line Rd	SB	3	12	6	72	8
LaGrange	County Line Rd	SB	2	12	6	72	8
LaGrange	County Line Rd	SB	3	12	6	72	8
LaGrange	County Line Rd	SB	1 & 2	2	240	480	53
LaGrange	County Line Rd	SB	3	12	6	72	8

TOTALS:

10590
FT

3643
SY

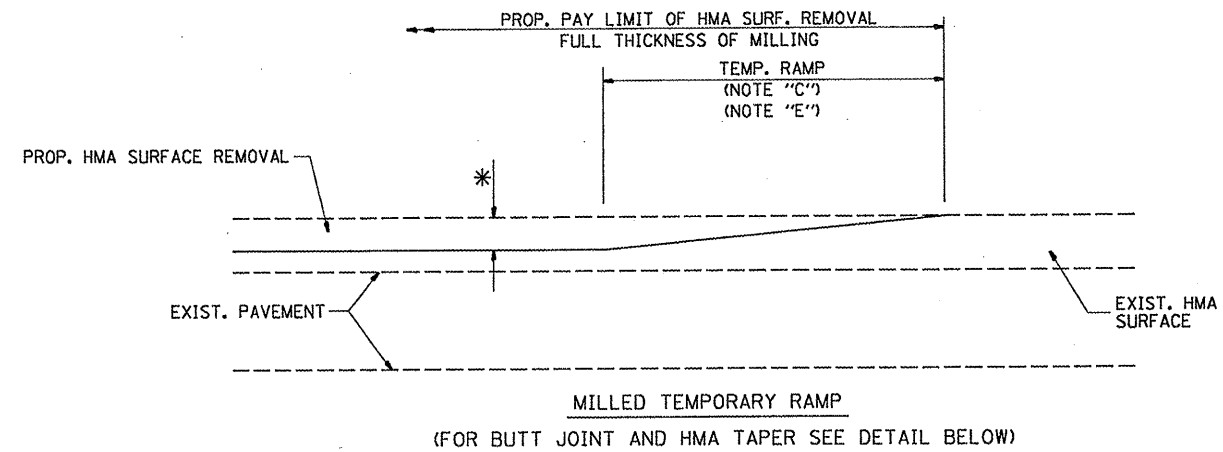
FILE NAME =	USER NAME = wilgreendp	DESIGNED -	REVISED -
c:\p\work\PW100T\WILGREENDP\0183621\0	esign.dgn	DRAWN -	REVISED -
	PLOT SCALE = 100.0000 / IN.	CHECKED -	REVISED -
	PLOT DATE = 2/20/2010	DATE -	REVISED -

**STATE OF ILLINOIS
DEPARTMENT OF TRANSPORTATION**

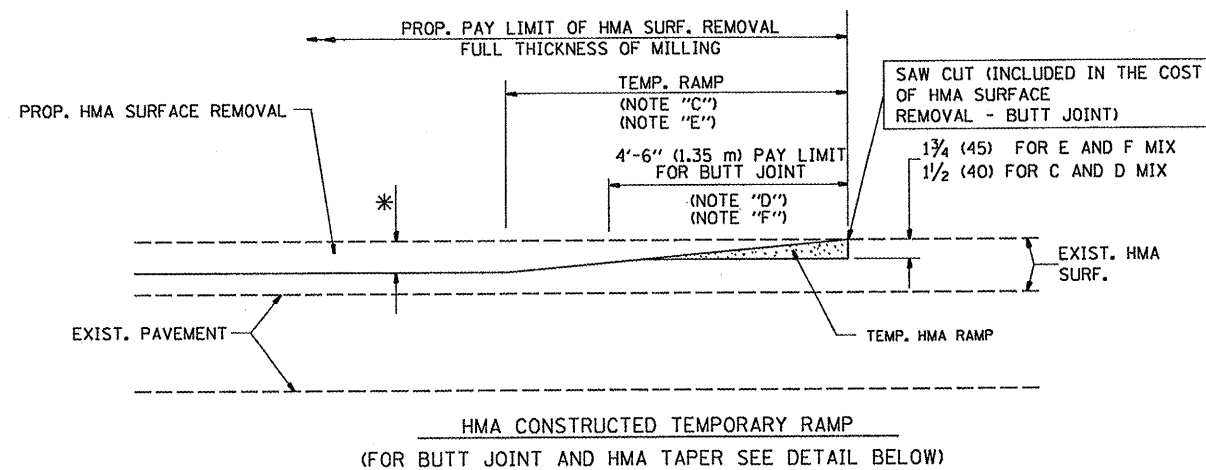
**PATCHING SCHEDULE
SB I-55 (STEVENSON EXPY.)**

SCALE: SHEET NO. OF SHEETS STA. TO STA.

F.A. RTE. VAR.	SECTION 2010-014 RS	COUNTY COOK	TOTAL SHEETS 34	SHEET NO. 22
FED. ROAD DIST. NO. 1 [ILLINOIS] FED. AID PROJECT			CONTRACT NO. 60K33	

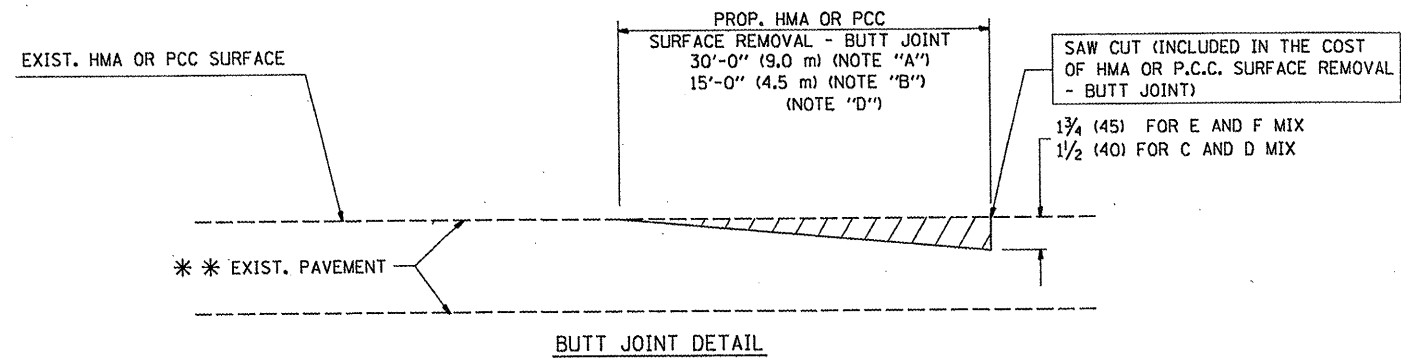


OPTION 1

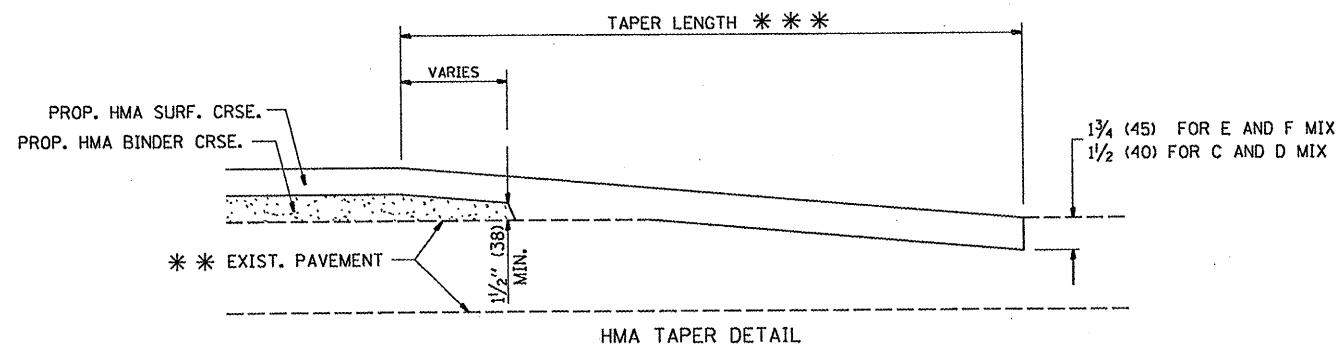


OPTION 2

TYPICAL TEMPORARY RAMP



BUTT JOINT DETAIL



HMA TAPER DETAIL

TYPICAL BUTT JOINT AND HMA TAPER FOR RESURFACING ONLY

*** PC CONCRETE, HMA OR HMA RESURFACED PAVEMENT.

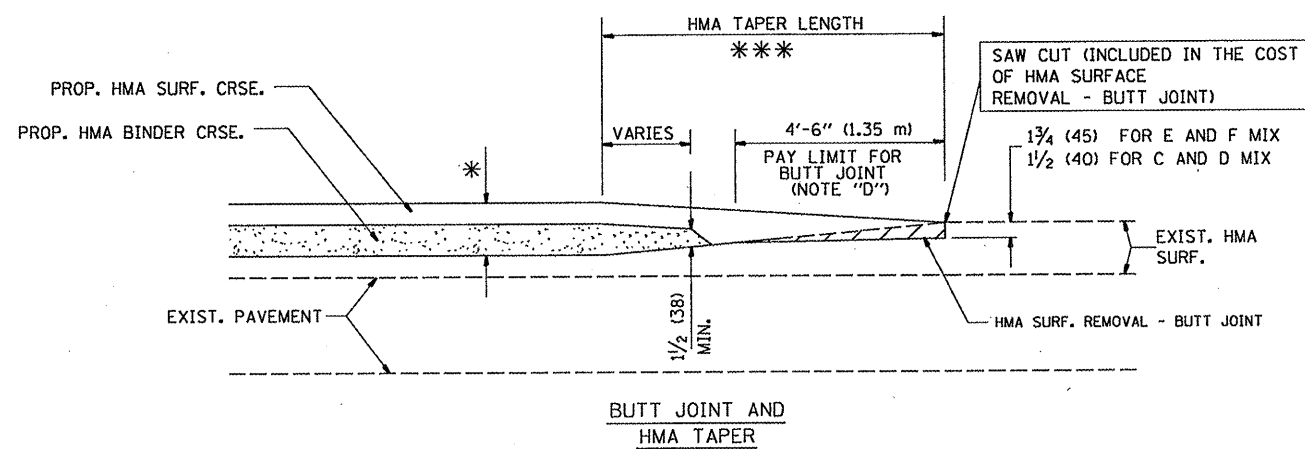
NOTES

- A: MAINLINE ROADWAYS AND MAJOR SIDE ROADS.
 - B: MINOR SIDE ROADS.
 - C: THE TEMP. RAMP SHALL BE CONSTRUCTED IMMEDIATELY UPON REMOVAL OF THE EXISTING HMA SURFACE.
 - D: THE BUTT JOINT SHALL BE CONSTRUCTED IMMEDIATELY PRIOR TO PLACING THE PROPOSED HMA COURSES.
 - E: TAPER THE TEMP. RAMP AT A RATE OF 3'-0" (900 mm) PER 1 INCH (25 mm) OF MILLING THICKNESS.
 - F: INSTALLATION AND REMOVAL OF THE 4'-6" (1.35 m) TEMP. RAMP IS INCLUDED IN COST OF HMA SURFACE REMOVAL - BUTT JOINT
 - G: SEE ARTICLE 406.08 AND 406.14 OF THE STANDARD SPECIFICATIONS FOR "HMA AND/OR PCC SURFACE REMOVAL, BUTT JOINT".
- * SEE TYPICAL SECTIONS FOR MILLING THICKNESS.
- *** 20'-0" (6.1 m) PER 1 (25) RESURFACING (NOTE "A")
 10'-0" (3.0 m) PER 1 (25) RESURFACING (NOTE "B")

BASIS OF PAYMENT:

THE BUTT JOINT WILL BE PAID FOR AT THE CONTRACT UNIT PRICE PER SQUARE YARD (SQUARE METER) FOR "HOT-MIX ASPHALT SURFACE REMOVAL - BUTT JOINT" OR FOR "PORTLAND CEMENT CONCRETE SURFACE REMOVAL - BUTT JOINT".

ALL DIMENSIONS ARE IN INCHES (MILLIMETERS) UNLESS OTHERWISE SHOWN.



TYPICAL BUTT JOINT AND HMA TAPER FOR MILLING AND RESURFACING

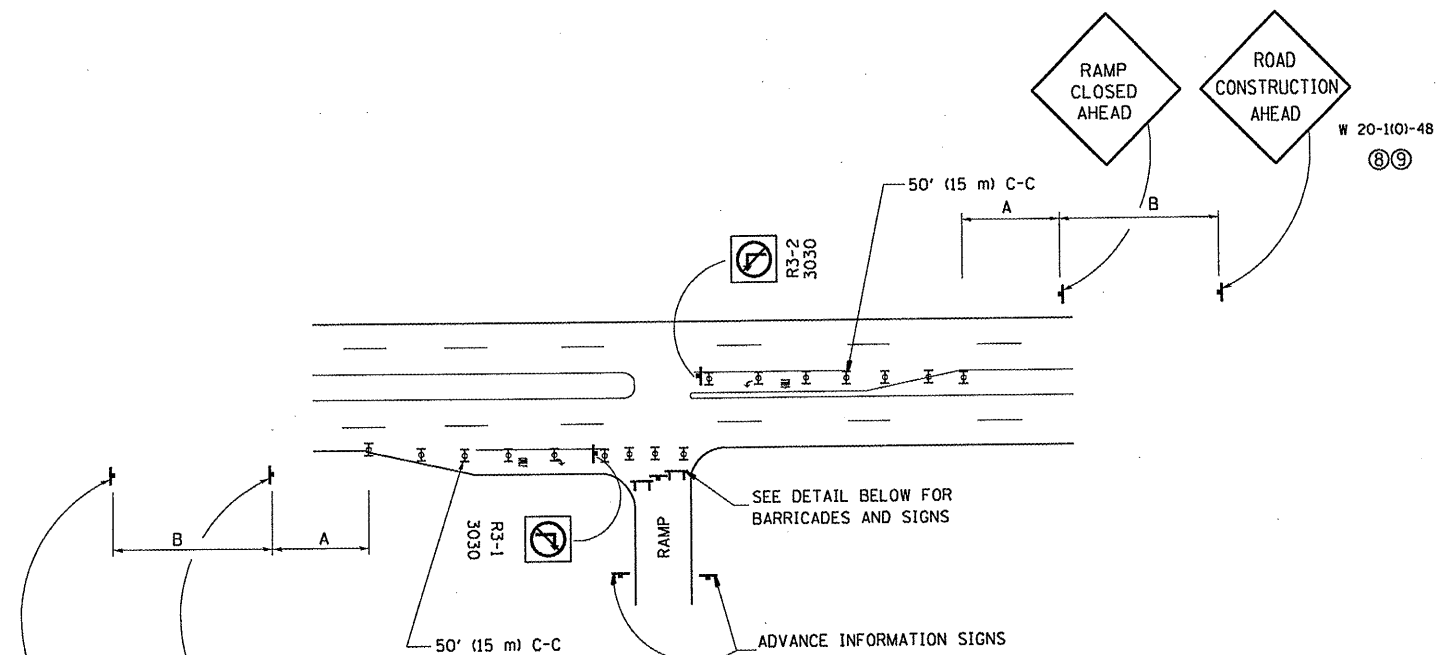
FILE NAME =	USER NAME = whitetar	DESIGNED - M. DE YONG	REVISED - R. SHAH 10-25-94
cr:\pwwork\PWIDOT\WHITETAR\0175544\Di	Std.dgn	DRAWN -	REVISED - A. ABBAS 03-21-97
	PLOT SCALE = 100.0000 "/td> <td>CHECKED -</td> <td>REVISED - M. GOMEZ 04-06-01</td>	CHECKED -	REVISED - M. GOMEZ 04-06-01
	PLOT DATE = 2/10/2010	DATE - 06-13-90	REVISED - R. BORO 01-01-07

**STATE OF ILLINOIS
DEPARTMENT OF TRANSPORTATION**

**BUTT JOINT AND
HMA TAPER DETAILS**

SCALE: NONE SHEET NO. 1 OF 1 SHEETS STA. TO STA.

F.A. RTE.	SECTION	COUNTY	TOTAL SHEETS	SHEET NO.
VAR	2010-014 RS	COOK	34	23
BD400-05 BD32			CONTRACT NO. 60K33	
FED. ROAD DIST. NO. 1 ILLINOIS FED. AID PROJECT				

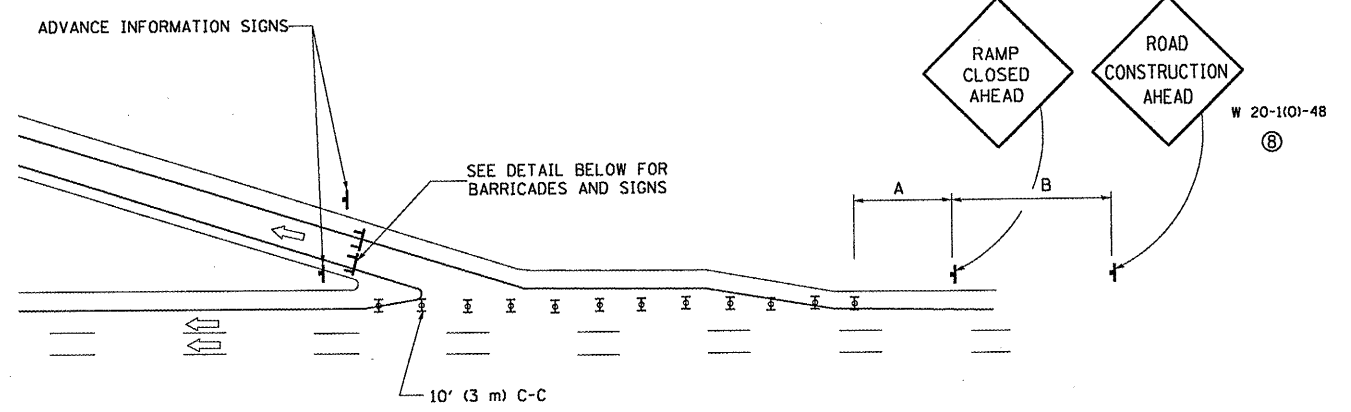
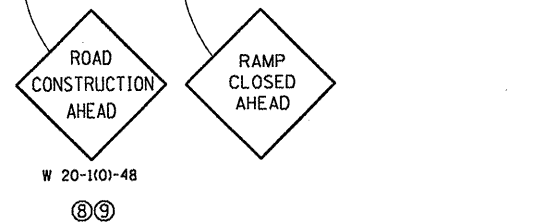


ENTRANCE RAMP CLOSURE

SIGN SPACING TABLE

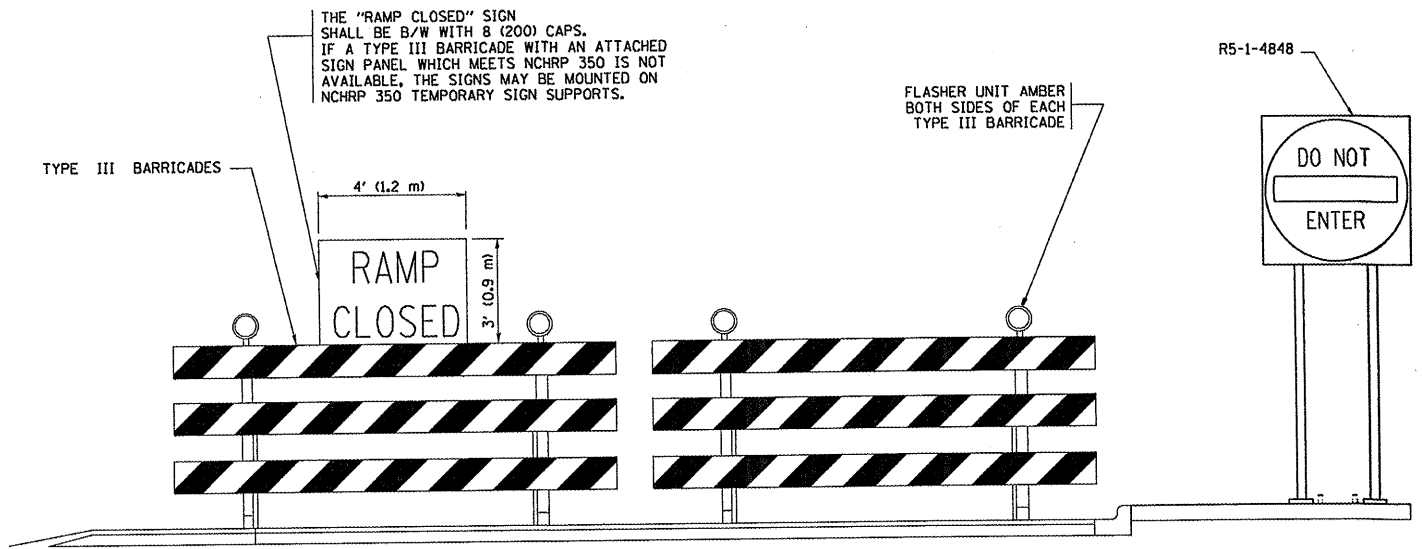
FACILITY	DISTANCE BETWEEN SIGNS	
	A	B
EXPRESSWAY >24 HOURS	1000' (300 m)	1500' (450 m)
EXPRESSWAY <24 HOURS	500' (150 m)	500' (150 m)
ARTERIAL ≥45 MPH	350' (100 m)	350' (100 m)
ARTERIAL <45 MPH	150' (45 m)	150' (45 m)

DISTANCES MAY BE SHORTENED DEPENDING UPON THE PROXIMITY OF ADJACENT RAMPS OR INTERSECTIONS.

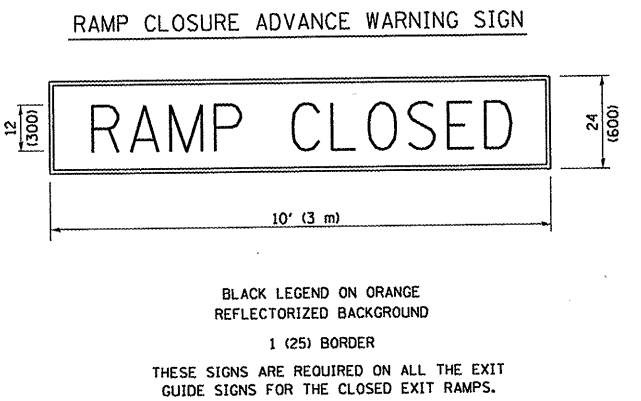


EXIT RAMP CLOSURE

- SYMBOLS**
- ⊥ TYPE II BARRICADE, DRUM OR VERTICAL BARRICADE WITH STEADY BURN MONO-DIRECTIONAL LIGHT
 - ⌈ TYPE III BARRICADE WITH FLASHING LIGHT

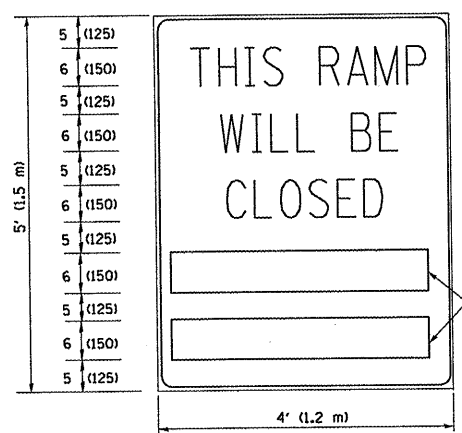


DETAIL FOR REQUIRED BARRICADES & SIGNS



BLACK LEGEND ON ORANGE REFLECTORIZED BACKGROUND
1 (25) BORDER
THESE SIGNS ARE REQUIRED ON ALL THE EXIT GUIDE SIGNS FOR THE CLOSED EXIT RAMPS.

RAMP CLOSURE ADVANCE INFORMATION SIGN



BLACK LEGEND ON WHITE REFLECTORIZED BACKGROUND
1/2 (12) BORDER
THESE BLANK AREAS SHALL BE FILLED WITH THE DATES AND THE TIME THAT THE RAMP WILL BE CLOSED.

THESE SIGNS ARE REQUIRED ON BOTH SIDES OF THE RAMP, MINIMUM OF 1 WEEK IN ADVANCE OF THE CLOSURE.

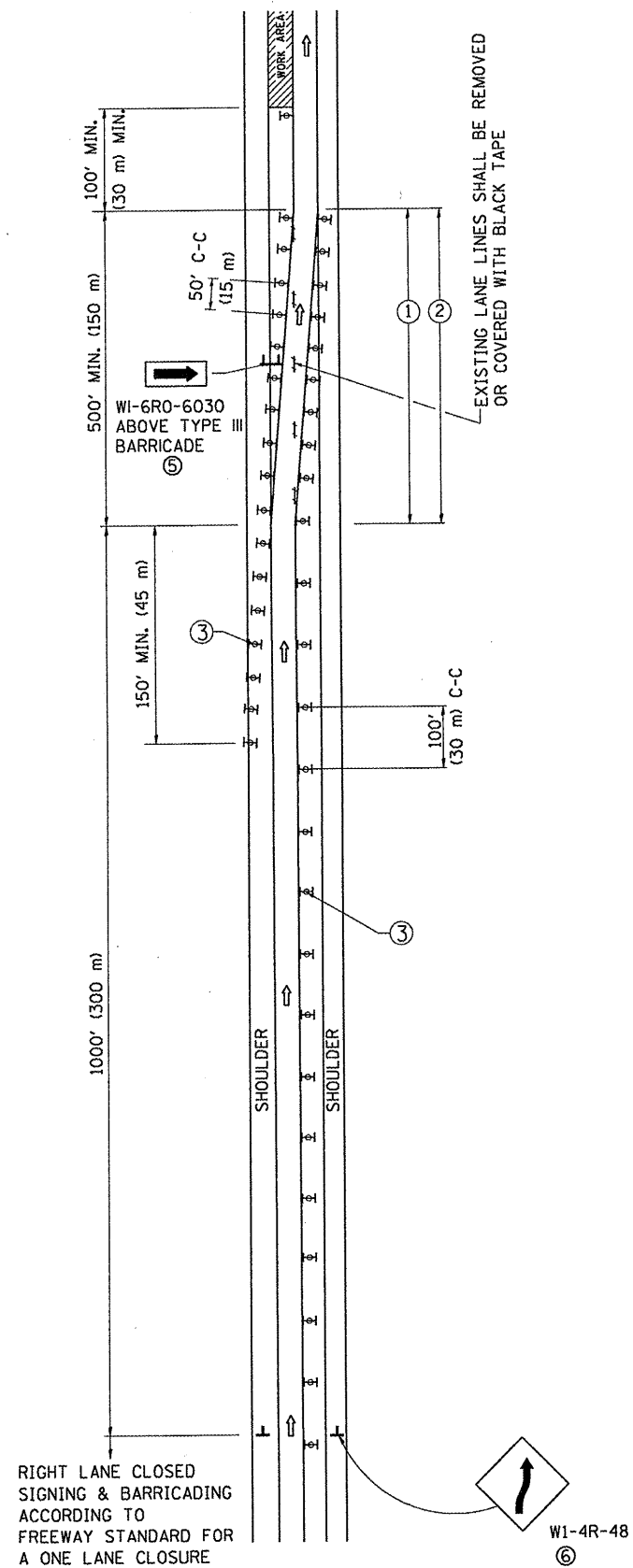
GENERAL NOTES:

- ① CONES MAY BE SUBSTITUTED FOR DRUMS OR TYPE II BARRICADES DURING DAY OPERATIONS. CONES SHALL BE A MINIMUM OF 28 (700) HIGH.
- ② STEADY BURN LIGHTS WILL NOT BE REQUIRED FOR DAY OPERATIONS.
- ③ A FLAGGER SHALL BE POSITIONED AT EACH CLOSED RAMP THAT IS OPEN TO CONSTRUCTION VEHICLES.
- ④ ALL ROUTE MARKERS AND TRAILBLAZER ASSEMBLIES WHICH DIRECT MOTORISTS TO A CLOSED ENTRANCE RAMP SHALL BE COVERED.
- ⑤ THE SIGNING AND BARRICADING WHICH IS REQUIRED BY THIS DETAIL SHALL BE INCLUDED IN THE COST OF TRAFFIC CONTROL AND PROTECTION (EXPRESSWAYS).
- ⑥ AUTHORIZATION FROM THE DISTRICT'S BUREAU OF TRAFFIC IS REQUIRED FOR ALL RAMP CLOSURES.
- ⑦ THE RAMP CLOSURE ADVANCE INFORMATION SIGNS SHALL BE ERECTED IF THE CLOSURE TIME EXCEEDS TWENTY-FOUR (24) HOURS. ADDITIONAL ADVANCE WARNING SIGNS ON EXIT GUIDE SIGNING WILL BE REQUIRED FOR EXIT RAMP CLOSURES THAT EXCEED TWENTY FOUR (24) HOURS IN LENGTH.
- ⑧ ROAD CONSTRUCTION AHEAD SIGNS MAY BE OMITTED WHEN THIS DETAIL IS USED IN CONJUNCTION WITH OTHER TRAFFIC CONTROL THAT ALREADY INCLUDES A ROAD CONSTRUCTION AHEAD SIGN.
- ⑨ ARTERIAL ROAD CONSTRUCTION AHEAD SIGNS MAY BE OMITTED ON CLOSURES LESS THAN 24 HOURS IN DURATION.

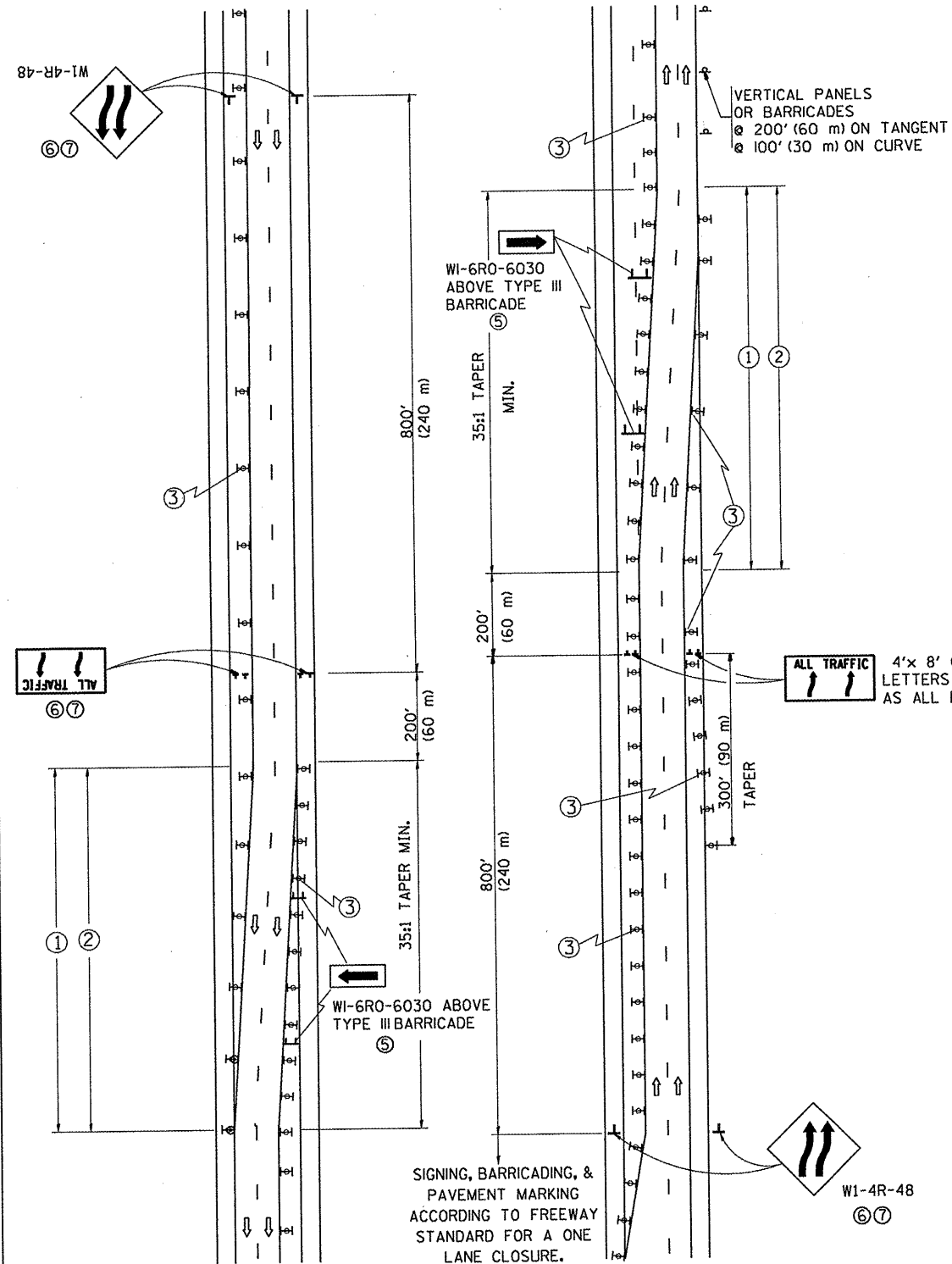
ALL DIMENSIONS ARE IN INCHES (MILLIMETERS) UNLESS OTHERWISE SHOWN.

FILE NAME =	USER NAME = wilgreendp	DESIGNED - DWS	REVISED - DWS/JAF 12-02	STATE OF ILLINOIS DEPARTMENT OF TRANSPORTATION	FREEWAY ENTRANCE AND EXIST RAMP CLOSURE DETAILS		F.A. RTE.	SECTION	COUNTY	TOTAL SHEET
es:\pw\work\PIWIDOT\WILGREENDP\d0183621\d	stStd.dgn	DRAWN -	REVISED - JAF 02-06		VAR.	2010-014 RS	COOK	3424		
PLOT SCALE = 100.0000' / IN.	CHECKED -	REVISED - SPB 01-07	REVISED - SPB 12-09		TC-08		CONTRACT NO. 60K33			
PLOT DATE = 2/20/2010	DATE - 02-83	REVISED - SPB 12-09	SCALE: NONE		SHEET NO. 1 OF 1 SHEETS	STA. TO STA.	FED. ROAD DIST. NO. 1 ILLINOIS FED. AID PROJECT			

SINGLE LANE WEAVE



MULTI-LANE WEAVE



GENERAL NOTES

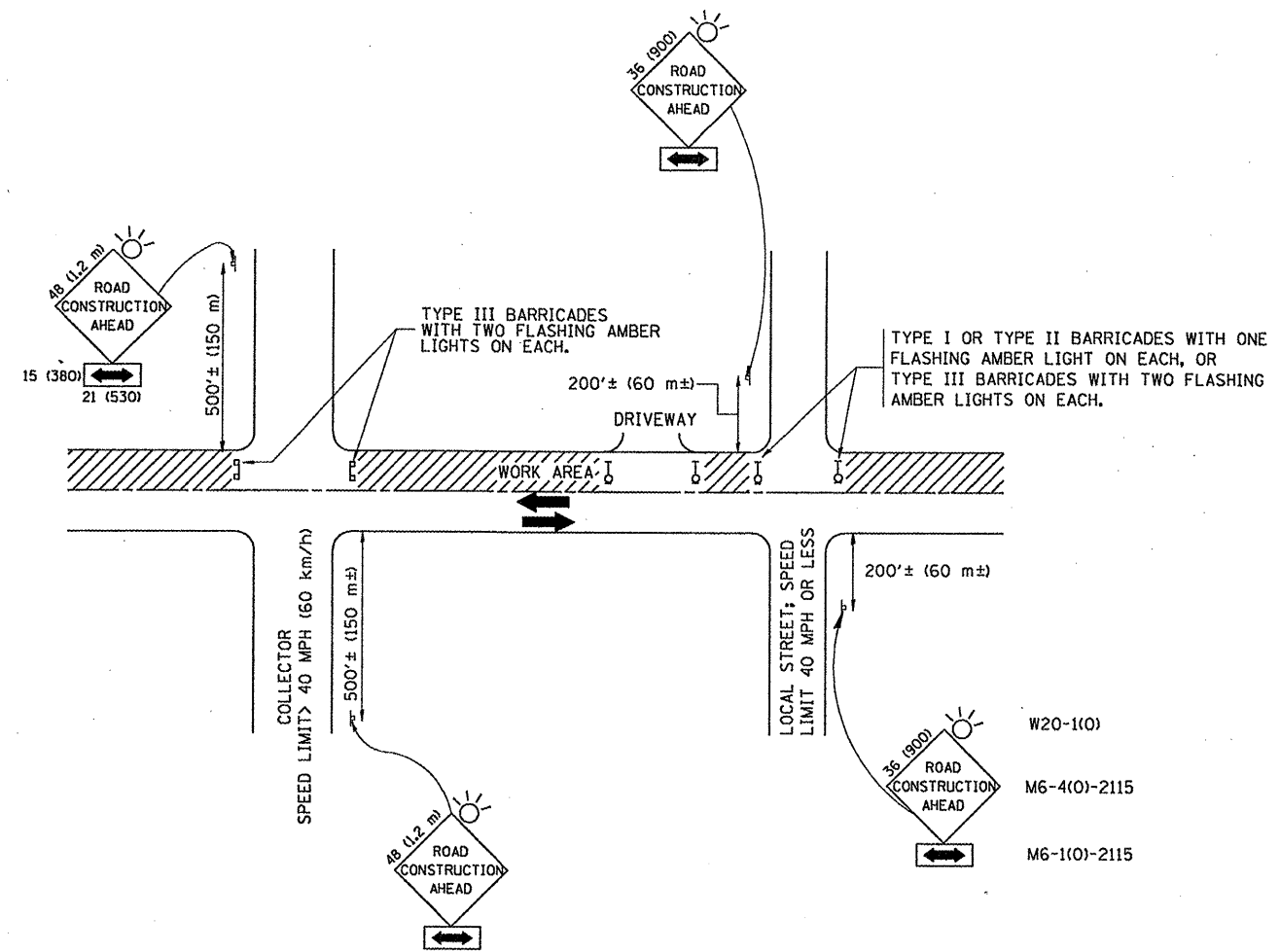
- EXISTING CONFLICTING PAVEMENT MARKING LINES SHALL BE REMOVED. PAVEMENT MARKING REMOVAL SHALL NOT BE REQUIRED FOR SINGLE LANE WEAVES UNDER 24 HOURS IN DURATION.
- CONTINUOUS REFLECTIVE TEMPORARY PAVEMENT MARKING TAPE SHALL BE PLACED THROUGHOUT THE TAPER AND FOR 300' (90 m) ALONG SIDE THE WORK AREA WHERE THE CLOSURE TIME IS GREATER THAN FOURTEEN DAYS. THE LEFT EDGE LINE SHALL BE YELLOW AND THE RIGHT EDGE LINE SHALL BE WHITE. FOR MULTI-LANE WEAVES LANE LINES SHALL BE 5 INCH, 10'-30' (3 m-9 m) SKIP DASH, WHITE.
- PLASTIC DRUMS WITH STEADY BURN LIGHTS AT 50' (15 m) C-C SPACING IN TAPERS AND 100' (30 m) C-C SPACING IN TANGENTS.
- ALL SIGNS SHALL BE POST MOUNTED IF THE CLOSURE TIME EXCEEDS FOUR DAYS.
- IF A TYPE III BARRICADE WITH AN ATTACHED SIGN PANEL WHICH MEETS NCHRP 350 IS NOT AVAILABLE, THE SIGNS MAY BE MOUNTED ON NCHRP 350 TEMPORARY SIGN SUPPORTS. TYPE III BARRICADES MAY BE OMITTED FOR SINGLE-LANE WEAVES UNDER 24-HOURS IN DURATION. W1-6 SIGNS WILL STILL BE REQUIRED. IF THE WIDTH OF OFFSET IS LESS THAN 6' THEN THE TYPE III BARRICADE WITH ATTACHED ARROW SIGN PANEL CAN BE ELIMINATED IN THE TAPER AREAS.
- WHEN THE LENGTH OF THE SHIFTED SEGMENT (DISTANCE BETWEEN WEAVE POINTS) IS LESS THAN 1500', DOUBLE REVERSE CURVE SIGNS (W24-1) SHOULD BE USED INSTEAD OF THE REVERSE CURVE (W1-4) SIGNS. ARROWS ON THE 4'X8' "ALL TRAFFIC" SIGNS SHALL BE THE SAME SHAPE.
- THE NUMBER OF ARROWS ON THESE SIGNS SHALL MATCH THE NUMBER OF LANES OPEN TO TRAFFIC.

SYMBOLS

- DIRECTION OF TRAFFIC
- WORK AREA
- SIGN ON PORTABLE OR PERMANENT SUPPORT
- TYPE II BARRICADE OR DRUM WITH MONO-DIRECTIONAL STEADY BURNING LIGHT
- W1-4R-48
- W24-1-48

ALL DIMENSIONS ARE IN INCHES (MILLIMETERS) UNLESS OTHERWISE SHOWN

FILE NAME = c:\pwwork\pwwork\WILGREENDP\d0183621\d	USER NAME = wilgreendp	DESIGNED - DWS	REVISED - JAF 01-03	STATE OF ILLINOIS DEPARTMENT OF TRANSPORTATION	TRAFFIC CONTROL DETAILS FOR FREEWAY SINGLE & MULTI-LANE WEAVE			F.A. RTE.	SECTION	COUNTY	TOTAL SHEETS	SHEET NO.
	PLOT SCALE = 1/8" = 1' IN.	CHECKED -	REVISED - JAF 02-06		REVISED - SPB 01-07	SCALE: NONE	SHEET NO. 1 OF 1 SHEETS	STA.	TO STA.	VAR.	2010-014 RS	COOK
PLOT DATE = 2/28/2010	DATE - 02-87	REVISED - SPB 12-09						TC-09		CONTRACT NO. 60K33		
								FED. ROAD DIST. NO. 1 ILLINOIS FED. AID PROJECT				



TRAFFIC CONTROL AND PROTECTION FOR SIDE ROADS, INTERSECTIONS, AND DRIVEWAYS

NOTES:

- A. FOR NO LANE RESTRICTION ON THE SIDE ROAD OR DRIVEWAYS:
 1. SIDE ROAD WITH A SPEED LIMIT OF 40 MPH (60 km/h) OR LESS AS SHOWN ON THE DRAWING AND AS DIRECTED BY THE ENGINEER:
 - a) ONE ROAD CONSTRUCTION AHEAD SIGN 36 x 36 (900x900) WITH A FLASHER AND FLAG MOUNTED ON IT APPROXIMATELY 200' (60 m) IN ADVANCE OF THE MAIN ROUTE.
 - b) THE CLOSED PORTION OF THE MAIN ROUTE SHALL BE PROTECTED BY BLOCKING WITH TYPE I, TYPE II OR TYPE III BARRICADES, 1/3 OF THE CROSS SECTION OF THE CLOSED PORTION.
 2. SIDE ROAD WITH A SPEED LIMIT GREATER THAN 40 MPH (60 km/h) AS SHOWN ON THE DRAWING AND AS DIRECTED BY THE ENGINEER:
 - a) ONE ROAD CONSTRUCTION AHEAD SIGN 48 x 48 (1.2 m x 1.2 m) WITH A FLASHER MOUNTED ON IT APPROXIMATELY 500' (150 m) IN ADVANCE OF THE MAIN ROUTE.
 - b) THE CLOSED PORTION OF THE MAIN ROUTE SHALL BE PROTECTED BY BLOCKING WITH TYPE III BARRICADES, 1/2 OF THE CROSS SECTION OF THE CLOSED PORTION.
- 3. WHEN THE SIDE ROAD LIES BETWEEN THE BEGINNING OF THE MAINLINE SIGNING AND THE WORK ZONE, A SINGLE HEADED ARROW (M6-1) SHALL BE USED IN LIEU OF THE DOUBLE HEADED ARROW (M6-4).
- B. FOR A LANE CLOSURE ON A SIDE ROAD OR DRIVEWAY:

USE APPLICABLE PORTIONS OF THE TYPICAL APPLICATION OF TRAFFIC CONTROL DEVICES (STD. 701501, STD. 701606 OR THE APPROPRIATE STANDARD). THE SPACING OF SIGNS AND BARRICADES SHALL BE ADJUSTED FOR FIELD CONDITIONS AS DIRECTED BY THE ENGINEER. THE DIRECTIONAL ARROW SHALL BE COVERED OR REMOVED WHEN NO LONGER CONSISTENT WITH THE SIDE ROAD LANE CLOSURE.
- C. ADVANCE WARNING SIGNS ARE TO BE OMITTED ON DRIVEWAY UNLESS OTHERWISE NOTED.
- D. THE TRAFFIC CONTROL AND PROTECTION FOR SIDE ROADS, INTERSECTIONS, AND DRIVEWAYS SHALL BE INCIDENTAL TO THE COST OF SPECIFIED TRAFFIC CONTROL STANDARDS OR ITEMS.

All dimensions are in millimeters (inches) unless otherwise shown.

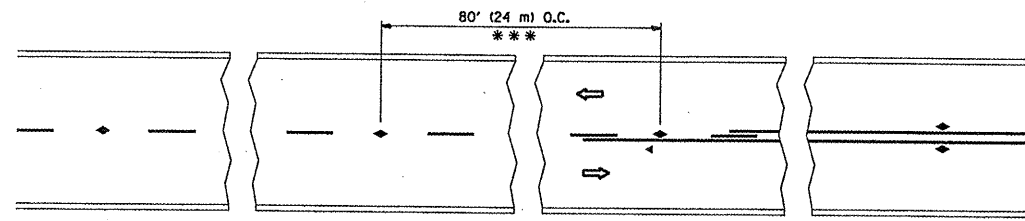
FILE NAME =	USER NAME = whitetar	DESIGNED - LHA	REVISED - J. OBERLE 10-18-95
es:\pwwork\pwwid\whitetar\d0175544\d1s	3std.dgn	DRAWN -	REVISED - A. HOUSEH 03-06-96
	PLOT SCALE = 100.0000 ' / IN.	CHECKED -	REVISED - A. HOUSEH 10-15-96
	PLOT DATE = 2/10/2010	DATE - 06-89	REVISED - T. RAMMACHER 01-06-00

**STATE OF ILLINOIS
DEPARTMENT OF TRANSPORTATION**

**TRAFFIC CONTROL AND PROTECTION FOR
SIDE ROADS, INTERSECTIONS, AND DRIVEWAYS**

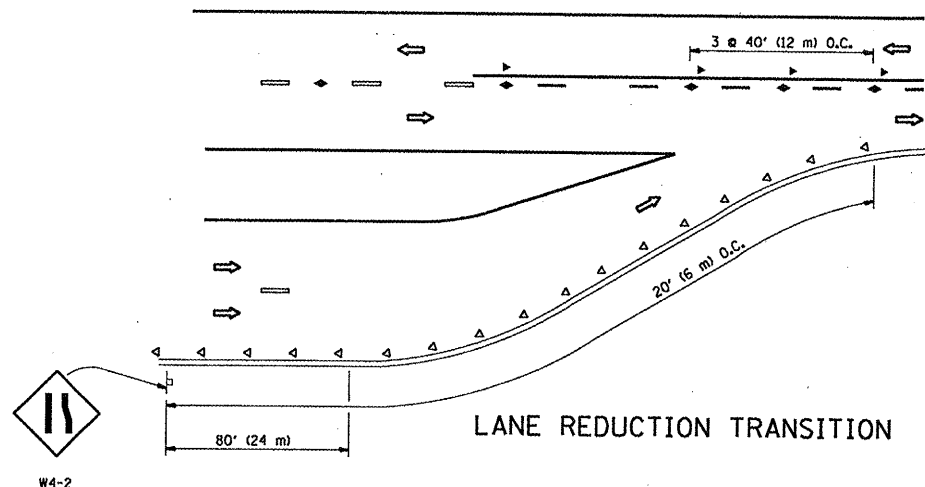
SCALE: NONE SHEET NO. 1 OF 1 SHEETS STA. TO STA.

F.A. RTE.	SECTION	COUNTY	TOTAL SHEETS	SHEET NO.
VAR.	2010-014 RS	COOK	34	26
TC-10			CONTRACT NO. 60K33	
FED. ROAD DIST. NO. 1 ILLINOIS FED. AID PROJECT				

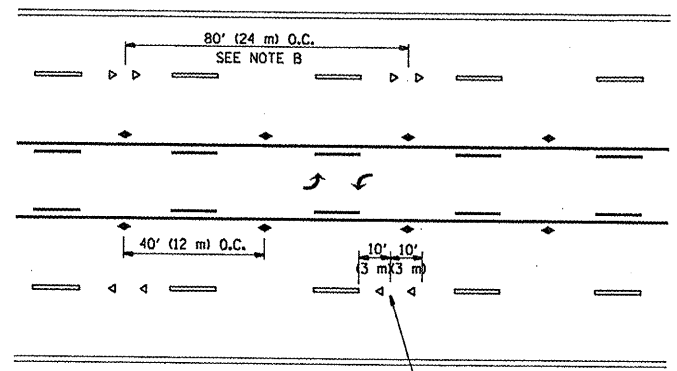


*** REDUCE TO 40' (12 m) O.C. ON CURVES WITH POSTED OR ADVISORY SPEED 45 M.P.H. (70 km/h) OR LESS.

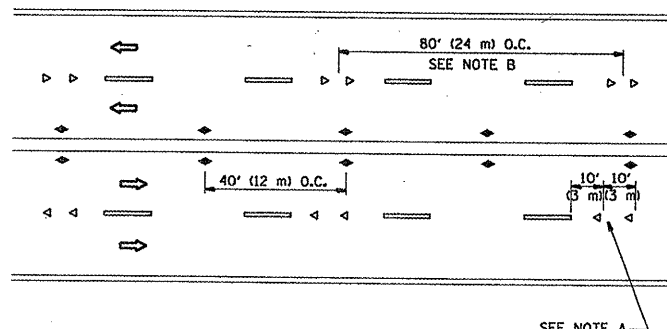
TWO-LANE/TWO-WAY



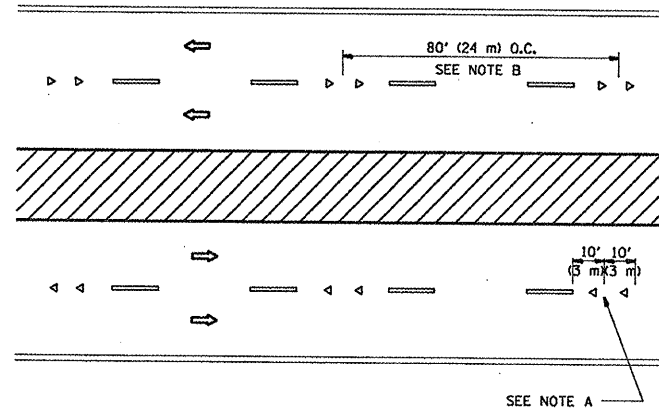
LANE REDUCTION TRANSITION



TWO-WAY LEFT TURN



MULTI-LANE/UNDIVIDED



MULTI-LANE/DIVIDED

GENERAL NOTES

1. MARKERS USED WITH DASHED LINES SHALL BE CENTERED IN THE GAP BETWEEN SEGMENTS.
2. MARKERS USED ADJACENT TO SOLID LINES SHALL BE OFFSET 2 TO 3 (50 TO 75) TOWARD TRAFFIC AS SHOWN.
3. MARKERS THROUGH TANGENTS LESS THAN 500' (150 m) IN LENGTH BETWEEN CURVES SHALL BE INSTALLED AT THE LESSER OF THE TWO CURVE SPACINGS.

SYMBOLS

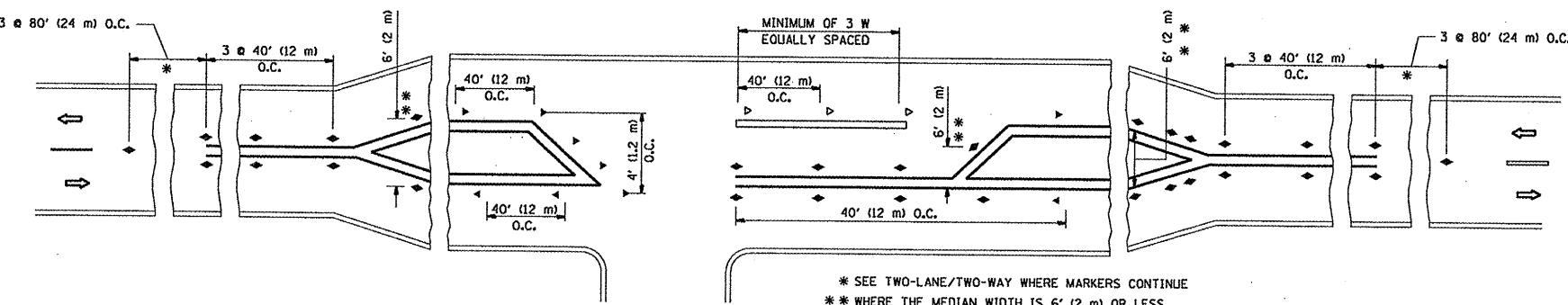
- YELLOW STRIPE
- WHITE STRIPE
- ◀ ONE-WAY AMBER MARKER
- ◁ ONE-WAY CRYSTAL MARKER (W/O)
- ◆ TWO-WAY AMBER MARKER

LANE MARKER NOTES

- A. USE DOUBLE LANE LINE MARKERS SPACED AS SHOWN.
- B. REDUCE TO 40' (12 m) O.C. ON CURVES WHERE ADVISORY SPEEDS ARE 10 M.P.H (20 km/h) LOWER THAN POSTED SPEEDS.

DESIGN NOTES

1. DOUBLE LANE LINE MARKERS SHALL BE USED UNLESS SPECIFIED OTHERWISE.
2. EXCEPT AS SHOWN ON THE LANE REDUCTION TRANSITION AND FREEWAY EXIT RAMP DETAIL, MARKERS ARE NOT TO BE SPECIFIED ON RIGHT EDGE LINES.
3. THE EXACT MARKER LIMITS, SPACING, AND COLOR SHOULD BE INCLUDED IN THE PLANS.
4. MARKERS SHOULD NOT BE USED ALONGSIDE CURBS EXCEPT FOR EXTREMELY SHORT SECTIONS OF CURBS WHERE NOT MORE THAN TWO MARKERS WOULD BE INVOLVED.



LEFT TURN

* SEE TWO-LANE/TWO-WAY WHERE MARKERS CONTINUE
 ** WHERE THE MEDIAN WIDTH IS 6' (2 m) OR LESS USE TWO-WAY MARKERS.

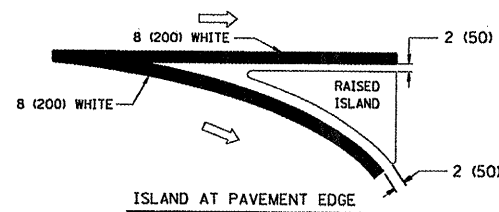
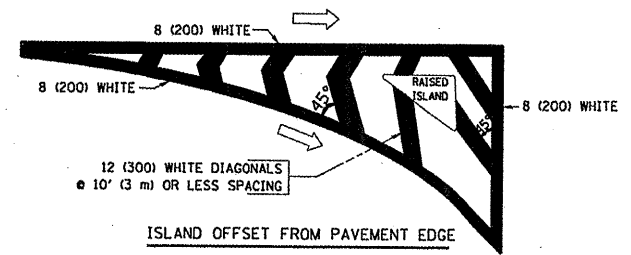
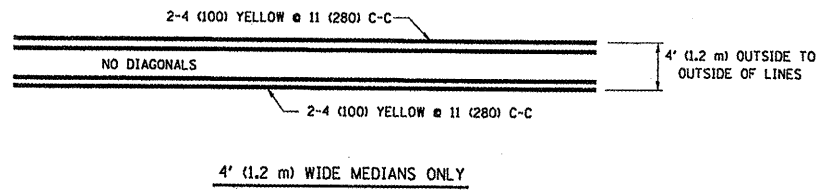
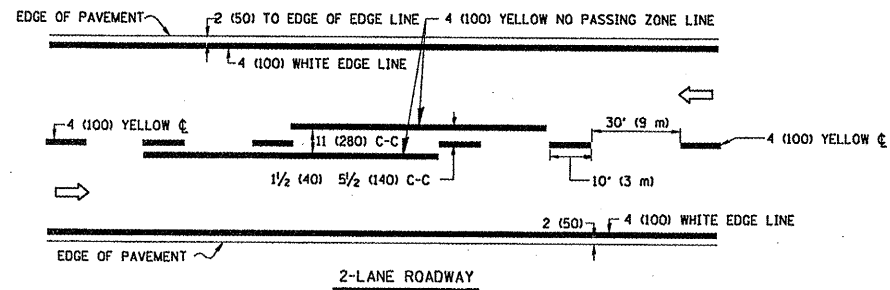
All dimensions are in inches (millimeters) unless otherwise shown.

**STATE OF ILLINOIS
 DEPARTMENT OF TRANSPORTATION**

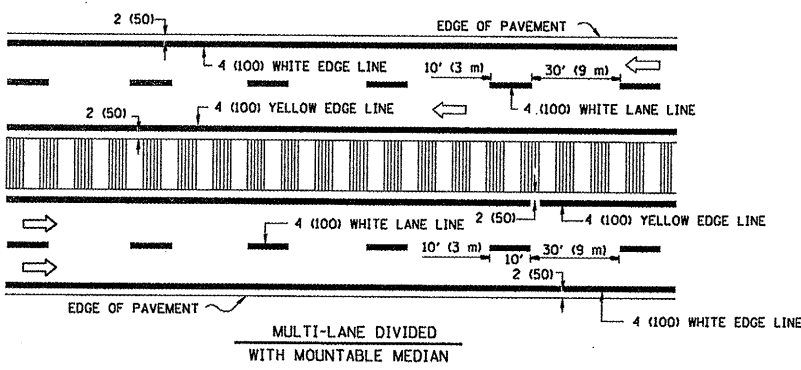
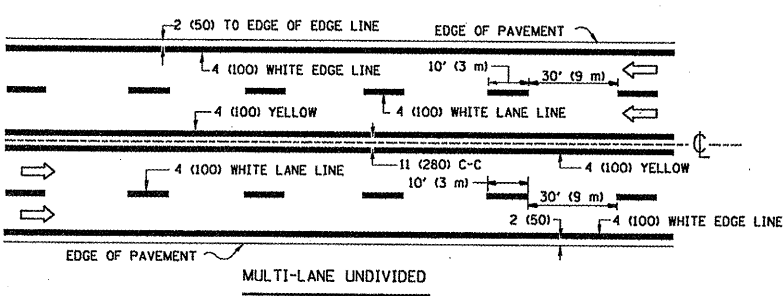
**TYPICAL APPLICATIONS
 RAISED REFLECTIVE PAVEMENT MARKERS (SNOW-PLOW RESISTANT)**

F.A. RTE.	SECTION	COUNTY	TOTAL SHEETS	SHEET NO.
VAR	2010-014 RS	COOK	34	27
TC-11			CONTRACT NO. 60K33	
FED. ROAD DIST. NO. 1 ILLINOIS FED. AID PROJECT				

FILE NAME =	USER NAME = whitetar	DESIGNED -	REVISED - T. RAMMACHER 09-19-94
ct\pwwork\PI\DDT\WHITETAR\d0175544\Dis	Std.dgn	DRAWN -	REVISED - T. RAMMACHER 03-12-99
	PLOT SCALE = 100.0000' / IN.	CHECKED -	REVISED - T. RAMMACHER 01-06-00
	PLOT DATE = 2/10/2010	DATE -	REVISED - C. JUCIUS 09-09-09

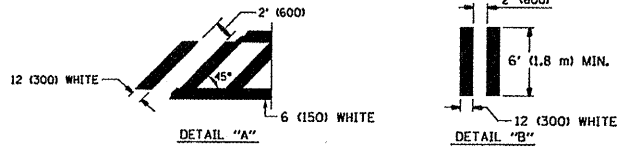
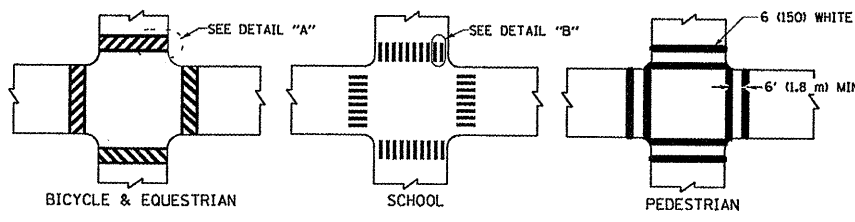


TYPICAL ISLAND MARKING

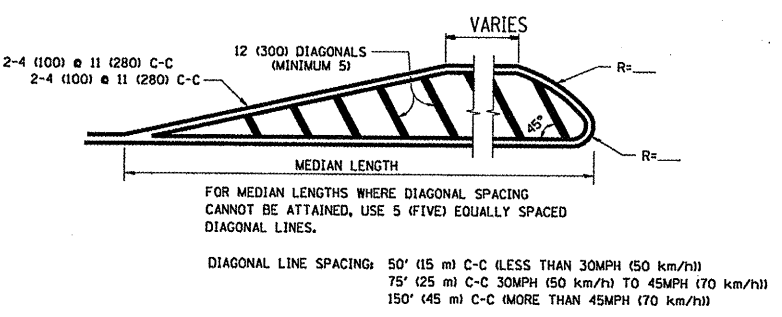


NOTE: MEDIANS WITH BARRIER CURB DO NOT REQUIRE AN EDGE LINE

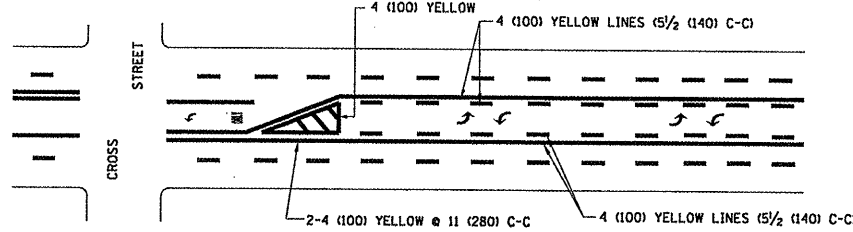
TYPICAL LANE AND EDGE LINE MARKING



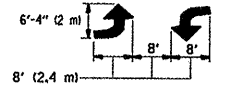
TYPICAL CROSSWALK MARKING



MEDIANS OVER 4' (1.2 m) WIDE

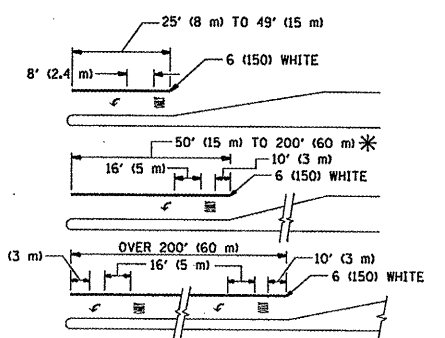


A MINIMUM OF TWO PAIRS OF TURN ARROWS SHALL BE USED, WHITE IN COLOR. ADDITIONAL PAIRS SHALL BE PLACED AT 200' (60 m) TO 300' (90 m) INTERVALS.



MEDIAN WITH TWO-WAY LEFT TURN LANE

TYPICAL PAINTED MEDIAN MARKING



FULL SIZE LETTERS 8' (2.4 m) AND ARROWS SHALL BE USED. AREA = 15.6 SQ. FT. (1.5 m²)

* TURN LANES IN EXCESS OF 400' (120 m) IN LENGTH MAY HAVE AN ADDITIONAL SET OF ARROW - "ONLY" INSTALLED MIDWAY BETWEEN THE OTHER TWO SETS OF ARROW - "ONLY".

TYPICAL LEFT (OR RIGHT) TURN LANE

TYPICAL TURN LANE MARKING

TYPE OF MARKING	WIDTH OF LINE	PATTERN	COLOR	SPACING / REMARKS
CENTERLINE ON 2 LANE PAVEMENT	4 (100)	SKIP-DASH	YELLOW	10' (3 m) LINE WITH 30' (9 m) SPACE
CENTERLINE ON MULTI-LANE UNDIVIDED PAVEMENT	2 @ 4 (100)	SOLID	YELLOW	11 (280) C-C
NO PASSING ZONE LINES: FOR ONE DIRECTION	4 (100)	SOLID	YELLOW	5/2 (140) C-C FROM SKIP-DASH CENTERLINE
NO PASSING ZONE LINES: FOR BOTH DIRECTIONS	2 @ 4 (100)	SOLID	YELLOW	11 (280) C-C OMIT SKIP-DASH CENTERLINE BETWEEN
LANE LINES	4 (100) 5 (125) ON FREEWAYS	SKIP-DASH SKIP-DASH	WHITE WHITE	10' (3 m) LINE WITH 30' (9 m) SPACE
DOTTED LINES (EXTENSIONS OF CENTER, LANE OR TURN LANE MARKINGS)	SAME AS LINE BEING EXTENDED	SKIP-DASH	SAME AS LINE BEING EXTENDED	2' (600) LINE WITH 6' (1.8 m) SPACE
EDGE LINES	4 (100)	SOLID	YELLOW-LEFT WHITE-RIGHT	OUTLINE MOUNTABLE MEDIANS IN YELLOW; EDGE LINES ARE NOT USED NEXT TO BARRIER CURB
TURN LANE MARKINGS	6 (150) LINE; FULL SIZE LETTERS & SYMBOLS (8' (2.4m))	SOLID	WHITE	SEE TYPICAL TURN LANE MARKING DETAIL
TWO WAY LEFT TURN MARKING	2 @ 4 (100) EACH DIRECTION 8' (2.4m) LEFT ARROW	SKIP-DASH AND SOLID IN PAIRS	YELLOW WHITE	10' (3 m) LINE WITH 30' (9 m) SPACE FOR SKIP-DASH; 5/2 (140) C-C BETWEEN SOLID LINE AND SKIP-DASH LINE SEE TYPICAL TWO-WAY LEFT TURN MARKING DETAIL
CROSSWALK LINES (PEDESTRIAN) A. DIAGONALS (BIKE & EQUESTRIAN) B. LONGITUDINAL BARS (SCHOOL)	2 @ 6 (150) 12 (300) @ 45° 12 (300) @ 90°	SOLID SOLID SOLID	WHITE WHITE WHITE	NOT LESS THAN 6' (1.8 m) APART 2' (600) APART 2' (600) APART SEE TYPICAL CROSSWALK MARKING DETAILS.
STOP LINES	24 (600)	SOLID	WHITE	PLACE 4' (1.2 m) IN ADVANCE OF AND PARALLEL TO CROSSWALK, IF PRESENT. OTHERWISE, PLACE AT DESIRED STOPPING POINT, PARALLEL TO CROSSROAD CENTERLINE, WHERE POSSIBLE
PAINTED MEDIANS	2 @ 4 (100) WITH 12 (300) DIAGONALS @ 45° NO DIAGONALS USED FOR 4' (1.2 m) WIDE MEDIANS	SOLID	YELLOW; TWO WAY TRAFFIC WHITE; ONE WAY TRAFFIC	11 (280) C-C FOR THE DOUBLE LINE SEE TYPICAL PAINTED MEDIAN MARKING.
GORE MARKING AND CHANNELIZING LINES	8 (200) WITH 12 (300) DIAGONALS @ 45°	SOLID	WHITE	DIAGONALS: 15' (4.5 m) C-C (LESS THAN 30MPH (50 km/h)) 20' (6 m) C-C (30MPH (50 km/h) TO 45MPH (70 km/h)) 30' (9 m) C-C (OVER 45MPH (70 km/h))
RAILROAD CROSSING	24 (600) TRANSVERSE LINES; "RR" IS 6' (1.8 m) LETTERS; 16 (400) LINE FOR "X"	SOLID	WHITE	SEE STATE STANDARD 780001 AREA OF: "R"=3.6 SQ. FT. (0.33 m ²) EACH "X"=54.0 SQ. FT. (5.0 m ²)
SHOULDER DIAGONALS	12 (300) @ 45°	SOLID	WHITE - RIGHT YELLOW - LEFT	50' (15 m) C-C (LESS THAN 30MPH (50 km/h)) 75' (25 m) C-C (30 MPH (50 km/h) TO 45MPH (70 km/h)) 150' (45 m) C-C (OVER 45MPH (70 km/h))

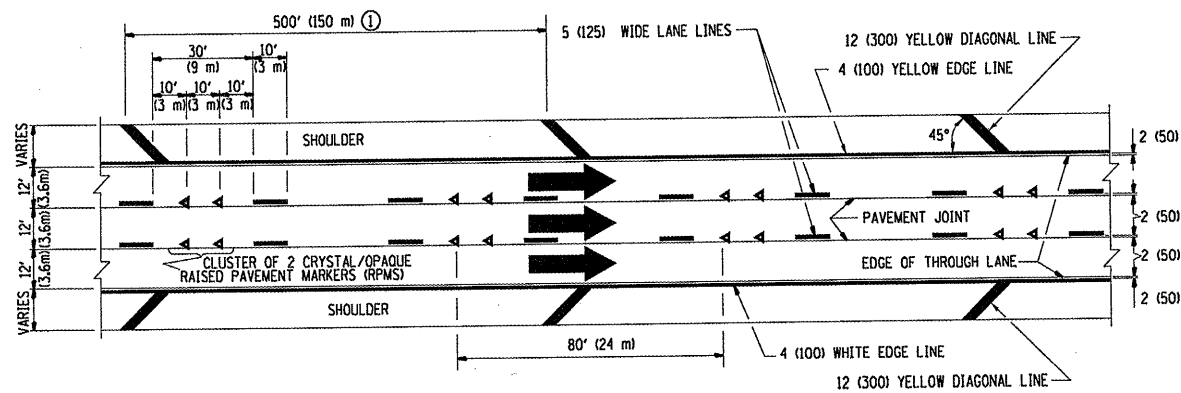
FOR FURTHER DETAILS ON PAVEMENT MARKING REFER TO STANDARD SPECIFICATIONS FOR ROAD AND BRIDGE CONSTRUCTION AND STATE STANDARD 780001.

All dimensions are in inches (millimeters) unless otherwise shown.

FILE NAME =	USER NAME = whitetar	DESIGNED - EVERS	REVISED - T. RAMMACHER 10-27-94
c:\p\work\PMIDOT\WHITETAR\d0175544\019	Std.dgn	DRAWN -	REVISED - C. JUCCIUS 09-09-09
	PLOT SCALE = 1/8" = 1' / IN.	CHECKED -	REVISED -
	PLOT DATE = 2/10/2010	DATE - 03-19-90	REVISED -

STATE OF ILLINOIS
DEPARTMENT OF TRANSPORTATION

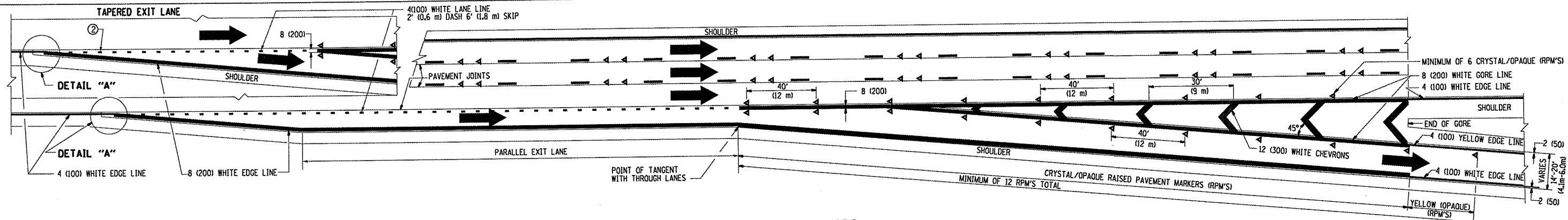
DISTRICT ONE		F.A. RTE.	SECTION	COUNTY	TOTAL SHEETS	SHEET NO.
TYPICAL PAVEMENT MARKINGS		VAR	2010-014 RS	COOK	34	28
SCALE: NONE		SHEET NO. 1 OF 1 SHEETS		STA. TO STA.		CONTRACT NO. 60K33
		FED. ROAD DIST. NO. 1		ILLINOIS FED. AID PROJECT		



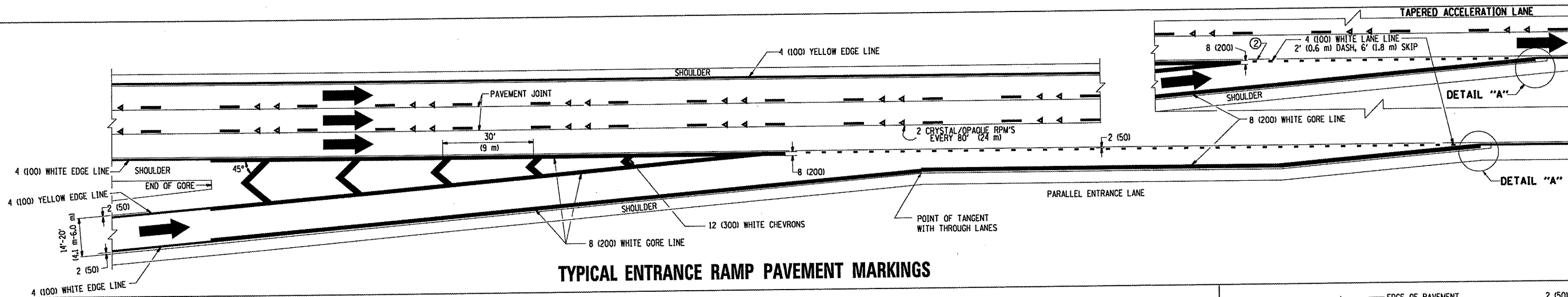
TYPICAL EDGE LINES & LANE LINES

PAVEMENT MARKING MATERIALS

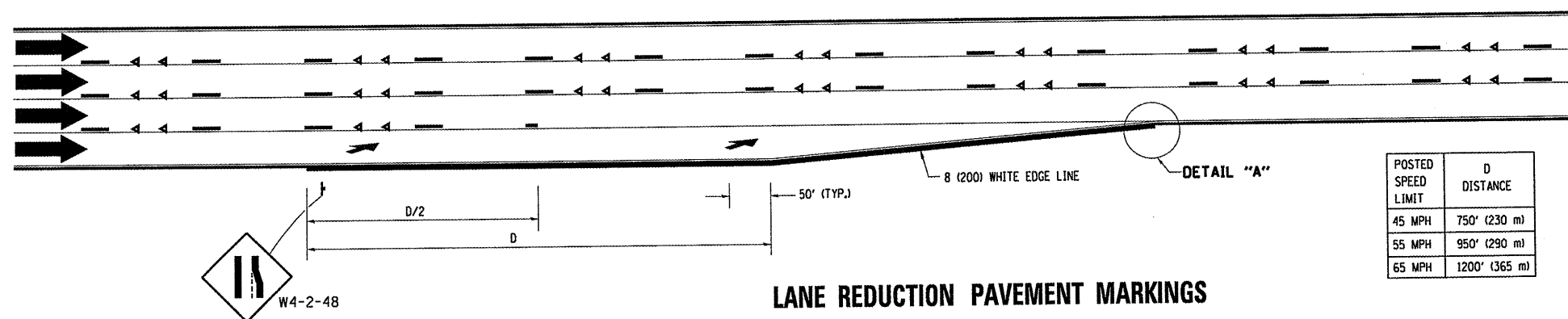
1. THERMO PLASTIC PAVEMENT MARKING LINE SHALL BE USED FOR THE EDGE LINES, GORE LINES, AND DIAGONAL LINES ON BITUMINOUS PAVEMENT ONLY.
2. PREFORMED PLASTIC TYPE B PAVEMENT MARKING LINE SHALL BE USED FOR ALL LANE LINES ON BITUMINOUS PAVEMENT.
3. POLYUREA PAVEMENT MARKING SHALL BE USED FOR ALL MARKINGS ON PCC.



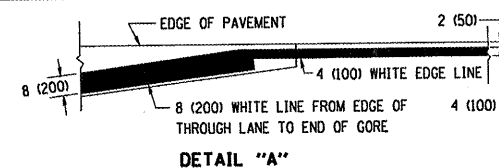
TYPICAL EXIT RAMP PAVEMENT MARKINGS



TYPICAL ENTRANCE RAMP PAVEMENT MARKINGS



POSTED SPEED LIMIT	D DISTANCE
45 MPH	750' (230 m)
55 MPH	950' (290 m)
65 MPH	1200' (365 m)



NOTES:

- ① THE DIAGONAL LINES SHALL BE SPACED AT 40' (12 m) C-C ACROSS ALL STRUCTURES WHICH ARE 500' (150 m) OR LESS IN LENGTH. THE DIAGONAL LINES ARE NOT REQUIRED ON SHOULDERS WHICH ARE 6' (1.8 m) OR LESS IN WIDTH.
- ② 4" (2' DASH, 6' SKIP) MARKING ON TAPERED ENTRANCE AND EXIT RAMP SHALL BE OMITTED ON TANGENT SECTIONS.

FILE NAME =
 USER NAME = wilgreenpd
 DESIGNED - D.W.S.
 DRAWN -
 PLOT SCALE = 1/8" = 1' / IN.
 PLOT DATE = 2/20/2010

USER NAME = wilgreenpd
 atStd.dgn
 PLOT SCALE = 1/8" = 1' / IN.
 PLOT DATE = 2/20/2010

DESIGNED - D.W.S.
 DRAWN -
 CHECKED -
 DATE - 01-90

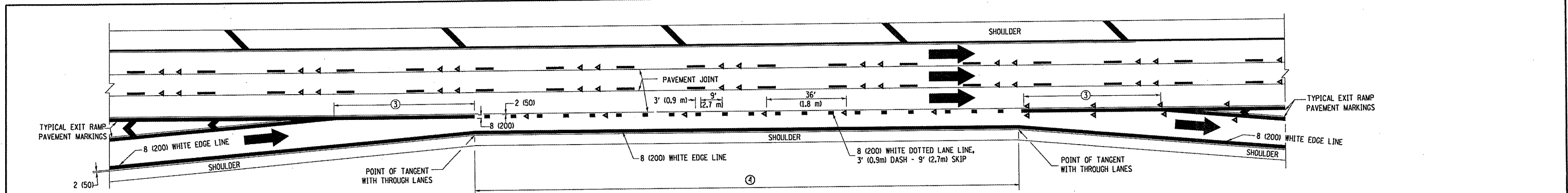
REVISED - D.W.S. 07-96
 REVISED - J.A.F. 02-06
 REVISED - S.P.B. 01-07
 REVISED - S.P.B. 01-10

**STATE OF ILLINOIS
 DEPARTMENT OF TRANSPORTATION**

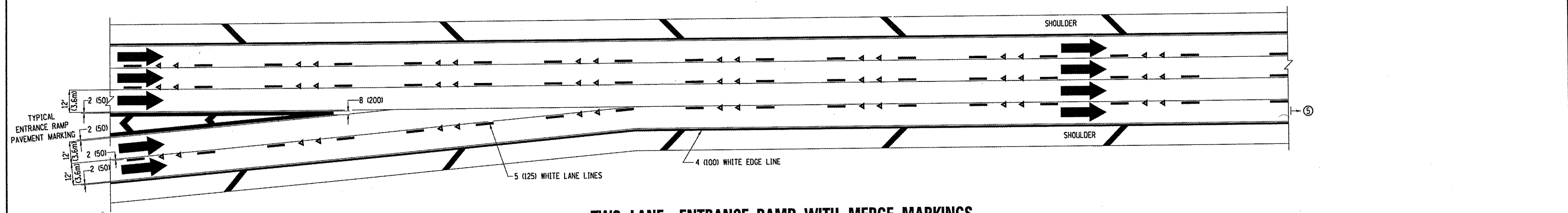
**MULTI-LANE FREEWAY
 PAVEMENT MARKING DETAILS**

SCALE: NONE SHEET NO. 1 OF 2 SHEETS STA. TO STA.

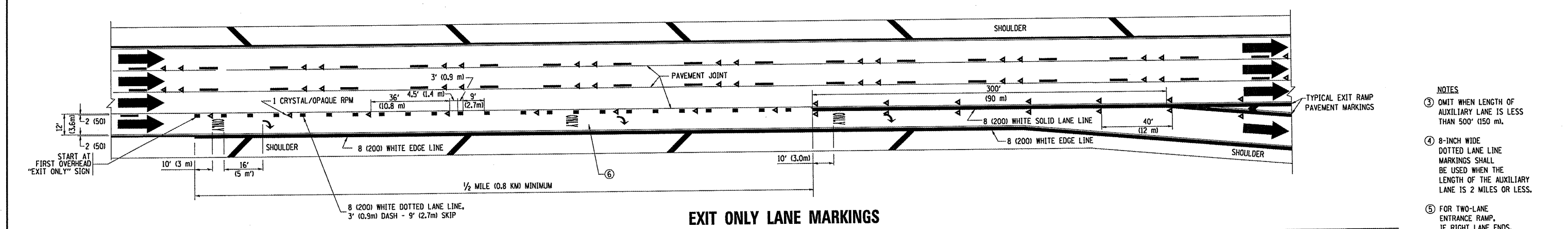
F.A. RTE.	SECTION	COUNTY	TOTAL SHEETS	SHEET NO.
VAR.	2010-014 RS	COOK	34	29
TC-12		CONTRACT NO.	60K33	
FED. ROAD DIST. NO. 1 ILLINOIS FED. AID PROJECT				



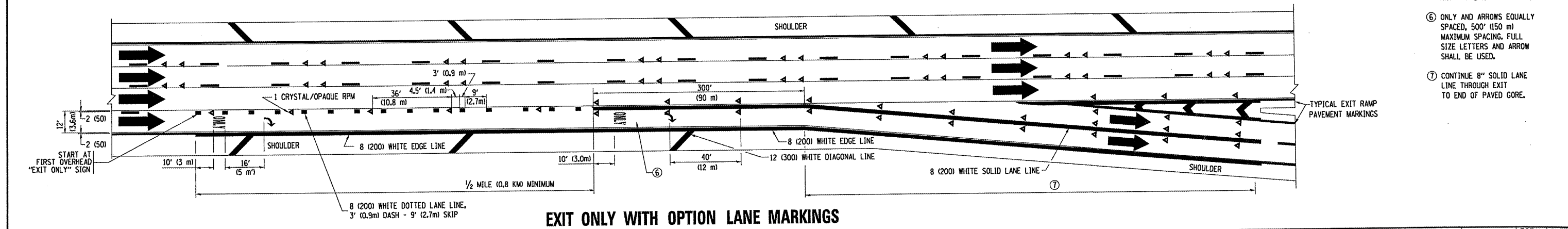
AUXILIARY LANE MARKINGS



TWO LANE ENTRANCE RAMP WITH MERGE MARKINGS



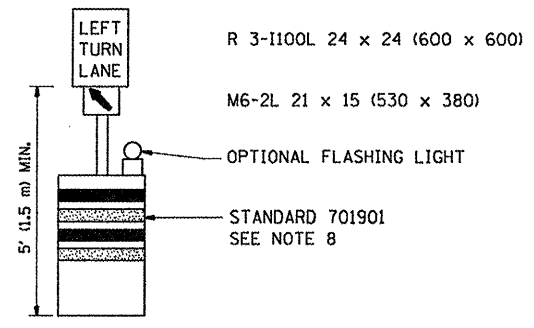
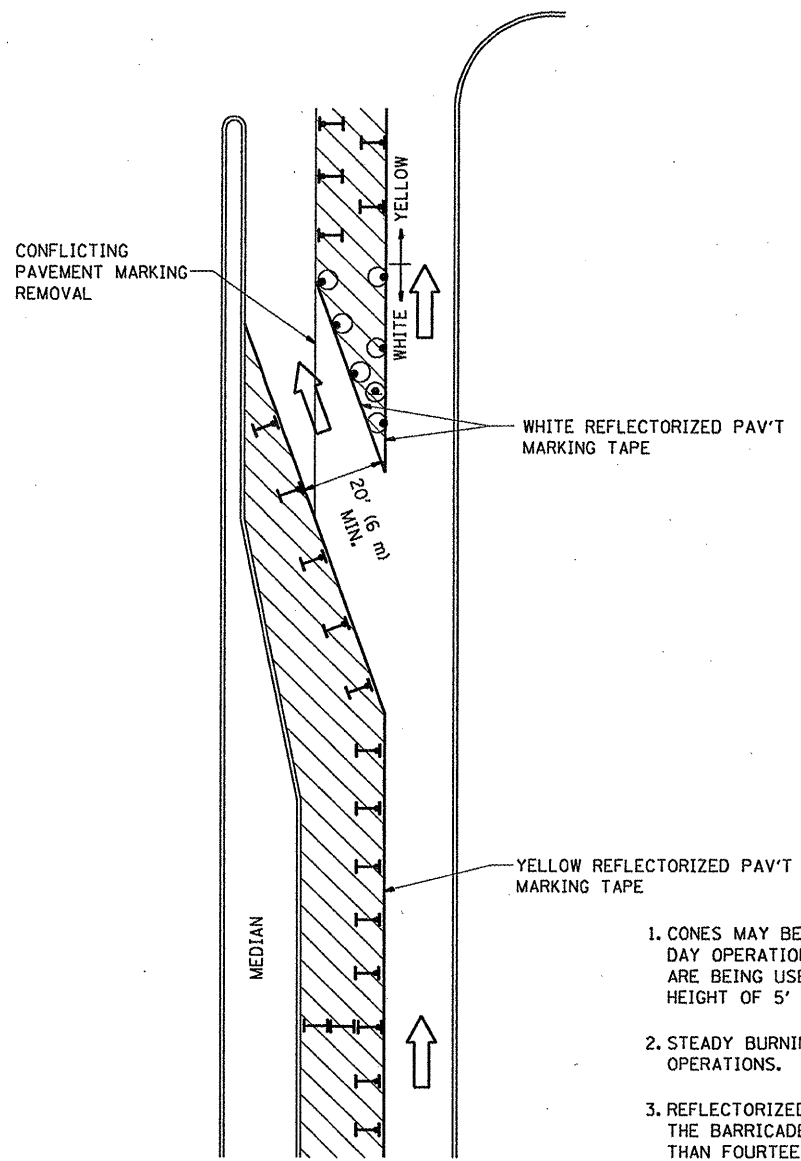
EXIT ONLY LANE MARKINGS



EXIT ONLY WITH OPTION LANE MARKINGS

- NOTES**
- ③ OMIT WHEN LENGTH OF AUXILIARY LANE IS LESS THAN 500' (150 m).
 - ④ 8-INCH WIDE DOTTED LANE LINE MARKINGS SHALL BE USED WHEN THE LENGTH OF THE AUXILIARY LANE IS 2 MILES OR LESS.
 - ⑤ FOR TWO-LANE ENTRANCE RAMP, IF RIGHT LANE ENDS, USE TYPICAL ENTRANCE RAMP PAVEMENT MARKINGS.
 - ⑥ ONLY AND ARROWS EQUALLY SPACED, 500' (150 m) MAXIMUM SPACING. FULL SIZE LETTERS AND ARROW SHALL BE USED.
 - ⑦ CONTINUE 8" SOLID LANE LINE THROUGH EXIT TO END OF PAVED GORE.

FILE NAME = c:\pwwork\VP\WIDOT\WILGREENDP\j0183621\	USER NAME = wilgreendp	DESIGNED - D.W.S.	REVISED - D.W.S. 07-96	STATE OF ILLINOIS DEPARTMENT OF TRANSPORTATION	MULTI-LANE FREEWAY PAVEMENT MARKING DETAILS		F.A. RTE.	SECTION	COUNTY	TOTAL SHEETS	SHEET NO.
	DRAWN - ststd.dgn	CHECKED -	REVISED - J.A.F. 02-06		SCALE: NONE	SHEET NO. 2 OF 2 SHEETS	STA. TO STA.	VAR.	2010-014 RS	COOK	34
	PLOT SCALE = 1/8" = 1' / IN.	DATE - 01-90	REVISED - S.P.B. 01-07				TC-12 CONTRACT NO. 60K33				
	PLOT DATE = 2/28/2010		REVISED - S.P.B. 01-10				FED. ROAD DIST. NO. 1 ILLINOIS FED. AID PROJECT				


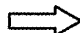



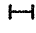


GENERAL NOTES

1. CONES MAY BE SUBSTITUTED FOR BARRICADES OR DRUMS AT HALF THE SPACING DURING DAY OPERATIONS. CONES SHALL BE A MINIMUM OF 28 (710) IN HEIGHT. WHEN CONES ARE BEING USED, THE "LEFT TURN LANE" SIGN MAY BE SKID MOUNTED AT A MINIMUM HEIGHT OF 5' (1.5 m).
2. STEADY BURNING LIGHTS WILL NOT BE REQUIRED ON BARRICADES OR DRUMS FOR DAY OPERATIONS. ALL LIGHTS SHALL BE MONODIRECTIONAL.
3. REFLECTORIZED TEMPORARY PAVEMENT MARKING TAPE SHALL BE PLACED THROUGHOUT THE BARRICADED AREA OF EACH TURN BAY WHERE THE CLOSURE TIME IS GREATER THAN FOURTEEN DAYS.
4. THIS APPLICATION ALSO APPLIES WHEN WORK IS BEING PERFORMED IN THE RIGHT LANE(S) AND THE RIGHT TURN BAY IS TO REMAIN OPEN. UNDER THIS CONDITION, "RIGHT TURN LANE" R3-100 24 x 24 (600 x 600) AND M6-2R 21 x 15 (530 x 380) SHALL BE USED.
5. THESE CONTROLS SHALL SUPPLEMENT MAINLINE TRAFFIC CONTROL FOR LANE CLOSURES.
6. LONGITUDINAL DIMENSIONS MAY BE ADJUSTED TO FIT FIELD CONDITIONS.
7. FORM OPER 725 IS REQUIRED.
8. IF A DRUM OR TYPE II BARRICADE WITH AN ATTACHED SIGN PANEL WHICH MEETS NCHRP 350 REQUIREMENTS IS NOT AVAILABLE, THE SIGNS SHALL BE MOUNTED, ABOVE THE BARRICADES, ON SEPARATE SIGNS SUPPORTS THAT MEET NCHR 350 REQUIREMENTS.
9. TRAFFIC CONTROL AND PROTECTION AT TURN BAYS (TO REMAIN OPEN TO TRAFFIC) SHALL BE INCLUDED IN THE COST SPECIFIED TRAFFIC CONTROL STANDARDS OR ITEMS.

All dimensions are in inches (millimeters) unless otherwise shown.

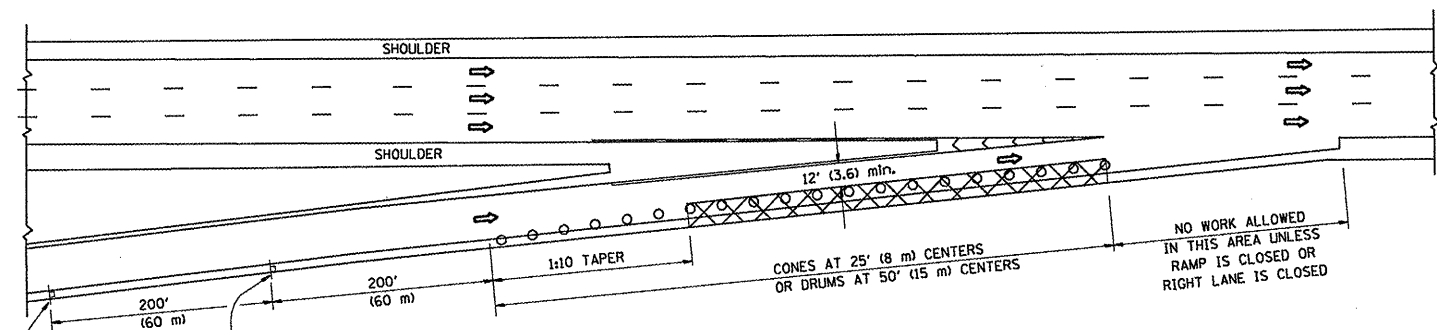
LEGEND

-  WORK AREA
-  LANE OPEN TO TRAFFIC
-  TYPE I OR II BARRICADE WITH STEADY BURN LIGHT
-  DRUM WITH STEADY BURN LIGHT
-  DRUM WITH SIGN (WITH OPTIONAL FLASHING LIGHT) SEE DETAIL
-  TYPE I OR II CHECK BARRICADE WITH FLASHING LIGHT

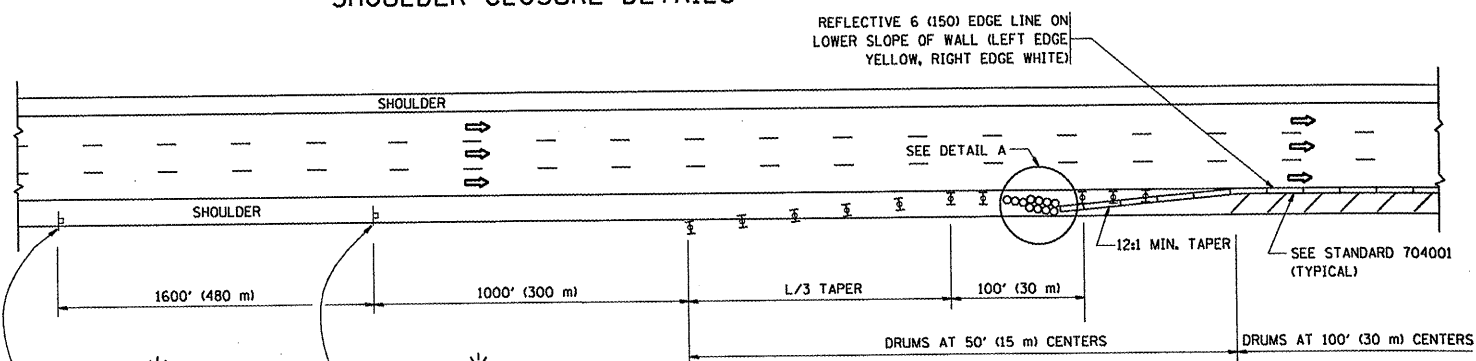
FILE NAME =	USER NAME = whiteter	REVISED - T. RAMMACHER 09-08-94	REVISED - R. BORO 09-14-09	STATE OF ILLINOIS DEPARTMENT OF TRANSPORTATION	TRAFFIC CONTROL AND PROTECTION AT TURN BAYS (TO REMAIN OPEN TO TRAFFIC)	F.A. RTE.	SECTION	COUNTY	TOTAL SHEETS	SHEET NO.
ct:\pwork\p\WIDOT\WHITETAR\0175544\Dis	Std.dgn	REVISED - A. HOUSEH 11-07-95	REVISED -			VAR	2010-014 RS	COOK	34	31
	PLOT SCALE = 100.0000' / IN.	REVISED - A. HOUSEH 10-12-96	REVISED -			TC-14		CONTRACT NO. 60K33		
	PLOT DATE = 2/10/2010	REVISED - T. RAMMACHER 01-06-00	REVISED -			FED. ROAD DIST. NO. 1 ILLINOIS FED. AID PROJECT				
				SCALE: NONE	SHEET NO. 1 OF 1 SHEETS	STA.	TO STA.			

PARTIAL RAMP CLOSURE DETAILS

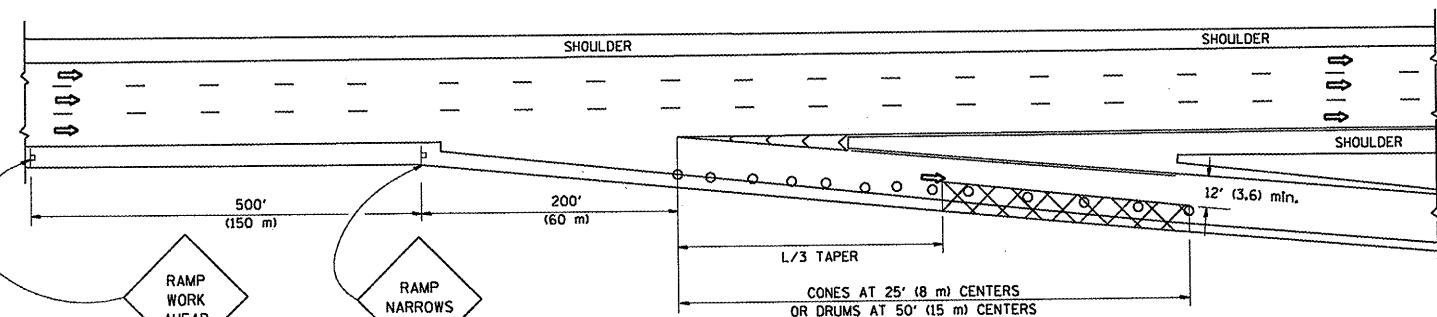
SHOULDER CLOSURE DETAILS



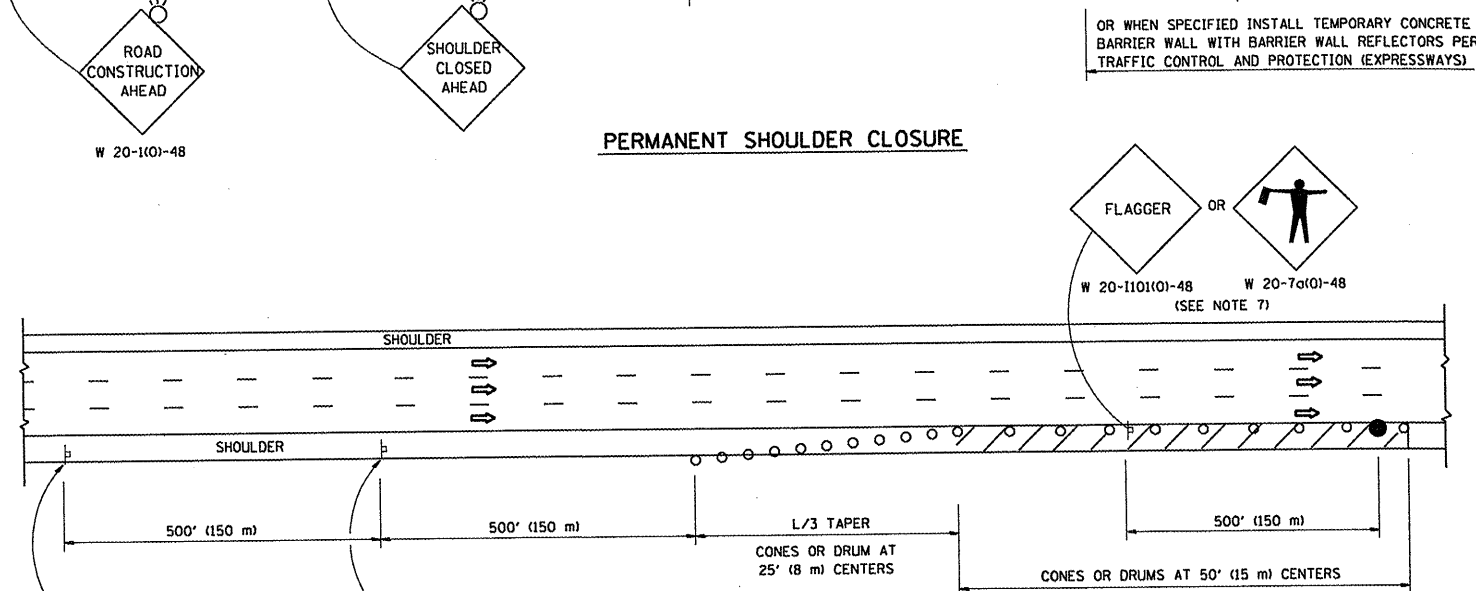
TYPICAL ENTRANCE RAMP



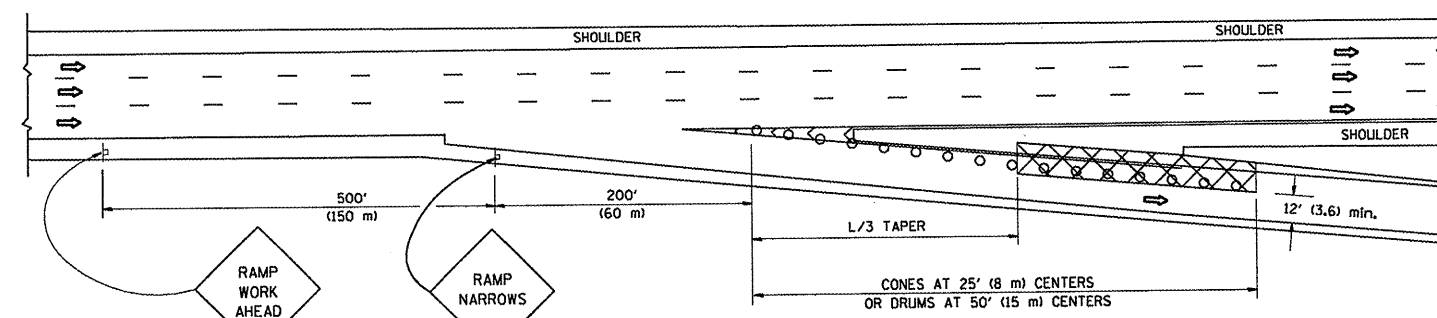
PERMANENT SHOULDER CLOSURE



TYPICAL EXIT RAMP



DAYTIME SHOULDER CLOSURE



TYPICAL EXIT RAMP

SYMBOLS

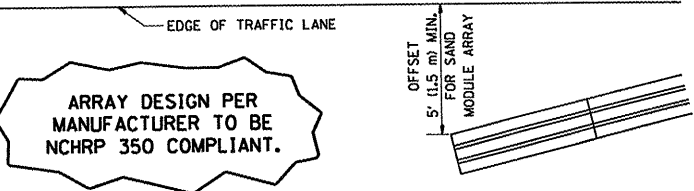
- ACTIVE WORK AREA
- SIGN ON PORTABLE OR PERMANENT SUPPORT
- FLAGGER WITH CONTROL SIGN
- TYPE II BARRICADE, DRUM OR VERTICAL BARRICADE WITH STEADY BURN MONO-DIRECTIONAL LIGHT
- CONE, DRUM OR BARRICADE

GENERAL NOTES

1. THE "L" DISTANCE EQUALS:

SPEED LIMIT	FORMULAS
45 mph (80 km/h) OR GREATER:	METRIC ENGLISH $L=0.65(WXS)$ $L=(WXS)$
W = WIDTH OF OFFSET IN FEET (METERS)	
S = NORMAL POSTED SPEED MPH (KM/H)	
2. PLASTIC DRUMS WITH HIGH PERFORMANCE REFLECTIVE SHEETING AND STEADY BURNING LIGHTS ARE REQUIRED FOR ALL NIGHTTIME CLOSURES.
3. ALL SIGNS SHALL BE POST MOUNTED IF THE CLOSURE TIME EXCEEDS FOUR DAYS.
4. FLASHING LIGHTS SHALL BE USED DURING THE HOURS OF DARKNESS AND SHALL BE INSTALLED ABOVE THE FIRST TWO SETS OF SIGNS.

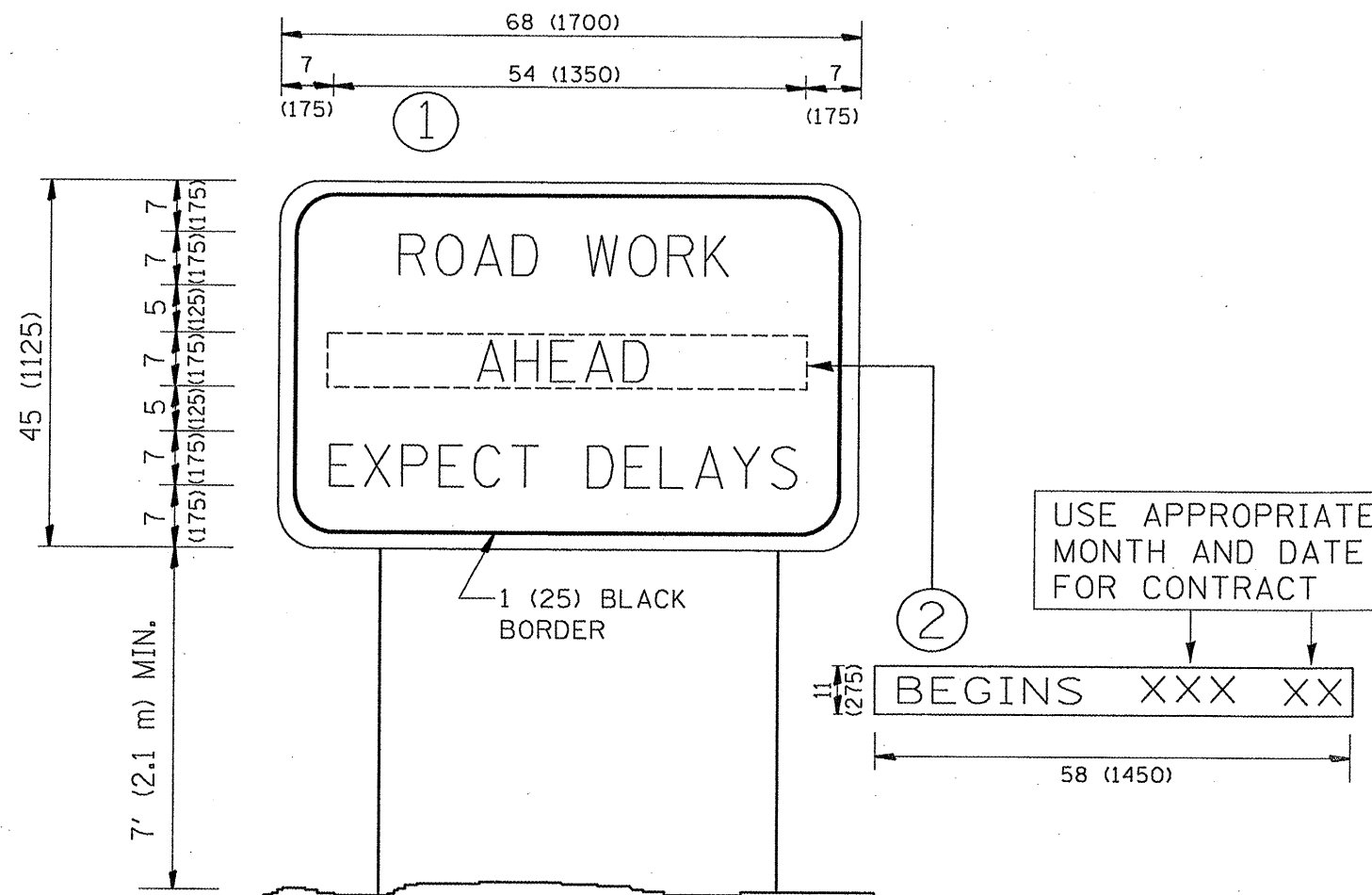
5. THE IMPACT ATTENUATOR, TEMPORARY IS NOT REQUIRED WHEN THE TEMPORARY CONCRETE BARRIER WALL IS PROTECTED BY OR IS TIED INTO THE EXISTING GUARDRAIL. IF OFFSET IS LESS THAN 5 FEET USE NARROW USE TYPE DEVICE TO MEET NCHRP350.
6. AUTHORIZATION FROM THE DISTRICT'S BUREAU OF TRAFFIC IS REQUIRED FOR ALL FREEWAY CLOSURES.
7. THE FLAGGER AND FLAGGER SIGN ARE REQUIRED AT THE ABOVE WORK SITES WHEN:
 - a. FOUR OR MORE WORK VEHICLES ENTER THE TRAFFIC LANES IN A ONE HOUR PERIOD.
 - b. THE WORK AVTIVITY REQUIRES FREQUENT ENCR OACHMENT INTO THE LANE OPEN TO TRAFFIC.
 THE FLAGGER SHALL BE STATIONED APPROXIMATELY 100' (30 m) TO 200' (60 m) IN ADVANCE OF THE WORKERS.



DETAIL "A" IMPACT ATTENUATOR, TEMPORARY (SEE NOTE 5)

ALL DIMENSIONS ARE IN INCHES (MILLIMETERS) UNLESS OTHERWISE SHOWN.

FILE NAME =	USER NAME = wilgreendp	DESIGNED -	REVISED - 04-03	STATE OF ILLINOIS DEPARTMENT OF TRANSPORTATION	TRAFFIC CONTROL DETAILS FOR FREEWAY SHOULDER CLOSURES AND PARTIAL RAMP CLOSURES			F.A. RTE.	SECTION	COUNTY	TOTAL SHEETS	SHEET NO.	
ca\pwwork\pwwid\DOT\WILGREENDP\d0183621\d	stStd.dgn	DRAWN - D.W.S.	REVISED - J.A.F. 12-06		SCALE: NONE	SHEET NO. 1	OF 1 SHEETS	STA.	TO STA.	2010-014 RS	COOK	34	32
	PLOT SCALE = 100.0000' / IN.	CHECKED -	REVISED - S.P.B. 01-07							TC-17		CONTRACT NO. 60K33	
	PLOT DATE = 2/20/2010	DATE - 11-96	REVISED - S.P.B. 12-09							FED. ROAD DIST. NO. 1 ILLINOIS FED. AID PROJECT			



NOTES:

1. USE BLACK LETTERING ON ORANGE BACKGROUND.
2. ERECT SIGNS IN ADVANCE OF THE LOCATION FOR THE "ROAD CONSTRUCTION AHEAD" SIGN AT LOCATIONS AS DIRECTED BY THE ENGINEER.
3. ERECT SIGN ① WITH INSTALLED PANEL ② ONE WEEK PRIOR TO THE START OF CONSTRUCTION.
4. REMOVE PANEL ② SOON AFTER THE START OF CONSTRUCTION.
5. SEE SPECIAL PROVISION FOR "TEMPORARY INFORMATION SIGNING" FOR ADDITIONAL INFORMATION.
6. ONE SIGN ASSEMBLY EQUALS 25.70 SQ. FT. (2.3 SQ. M.)
7. SHALL BE PAID FOR AS TEMPORARY INFORMATION SIGNING.

ALL DIMENSIONS ARE IN INCHES (MILLIMETERS) UNLESS OTHERWISE SHOWN.

FILE NAME =	USER NAME = whitetar	DESIGNED -	REVISED - R. MIRS 09-15-97
ca\pwwork\VPWIDOT\WHITETAR\d0175544\Dist	Std.dgn	DRAWN -	REVISED - R. MIRS 12-11-97
	PLOT SCALE = 100.0000' / IN.	CHECKED -	REVISED - T. RAMMACHER 02-02-99
	PLOT DATE = 2/10/2010	DATE -	REVISED - C. JUCIUS 01-31-07

STATE OF ILLINOIS
DEPARTMENT OF TRANSPORTATION

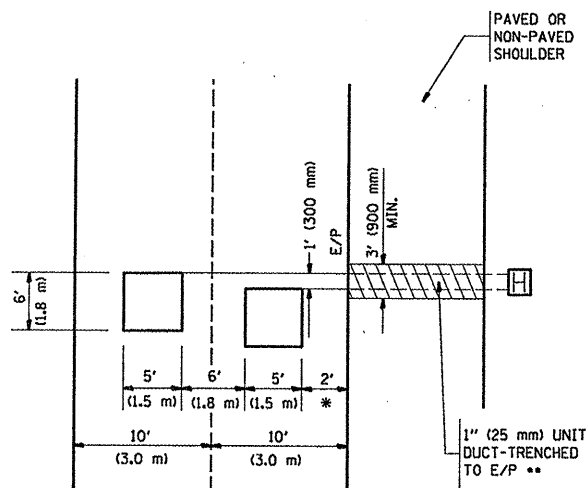
ARTERIAL ROAD
INFORMATION SIGN

F.A. RTE.	SECTION	COUNTY	TOTAL SHEETS	SHEET NO.
VAR	2010-014 RS	COOK	34	33
TC-22			CONTRACT NO. 60K33	
FED. ROAD DIST. NO. 1 [ILLINOIS] FED. AID PROJECT				

SCALE: NONE SHEET NO. 1 OF 1 SHEETS STA. TO STA.

LOOPS NEXT TO SHOULDERS

PROVIDE A PAVEMENT REPLACEMENT
NOTE WHICH SHOULD EQUAL
3' (900 mm) X WIDTH OF
PAVED SHOULDER.

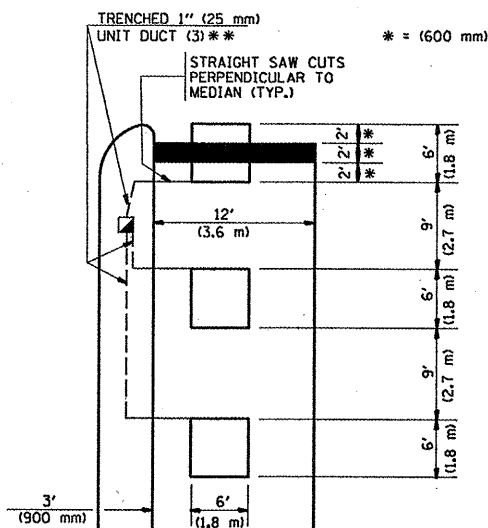


* = (600 mm)

** UNIT DUCT IS TO BE SHOWN ON PLAN SHEETS
BUT SHALL NOT BE INCLUDED IN THE PAY ITEMS.

**LEFT TURN LANES WITH MEDIANS
VOLUME DENSITY ("FAR OUT" DETECTION)
ON SAME APPROACH
(PROTECTED / PERMITTED LEFT TURN PHASING)**

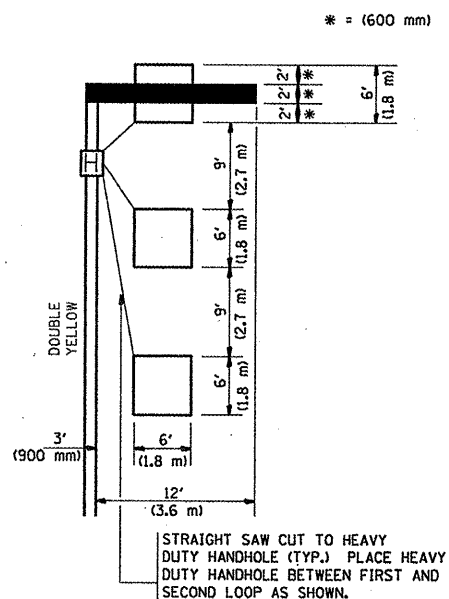
HANDHOLE LOCATION MAY
VARY DEPENDING ON GEOMETRICS
AND DESIGN OF TRAFFIC SIGNALS.
HEAVY-DUTY HANDHOLES TO BE
USED WHEN THE MEDIAN IS
MOUNTABLE. REFER TO STANDARD
814001 TO ENSURE THAT HANDHOLE
FITS IN MEDIAN.



** UNIT DUCT IS TO BE SHOWN ON PLAN SHEETS
BUT SHALL NOT BE INCLUDED IN THE PAY ITEMS.

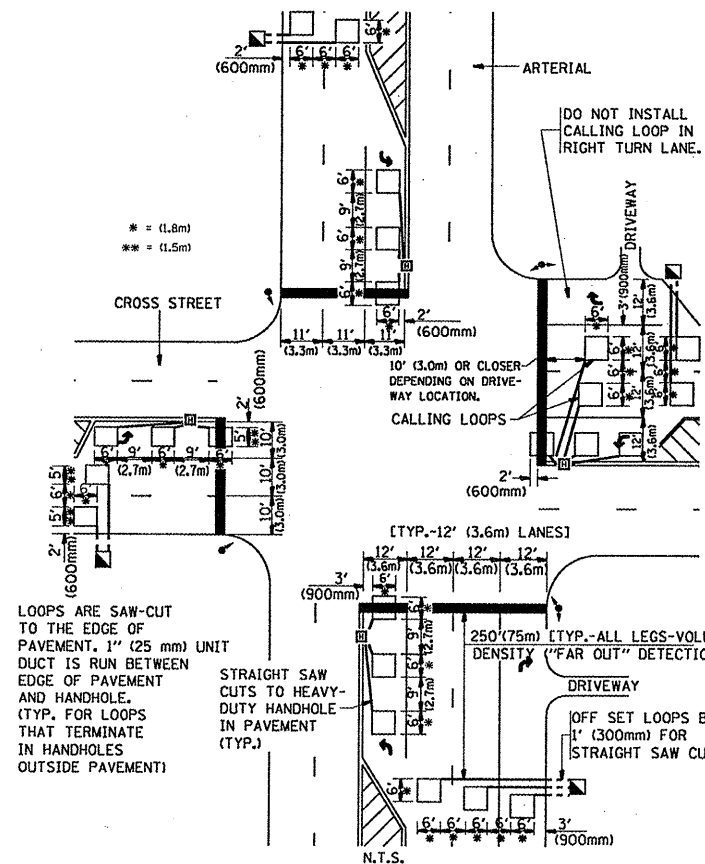
NOTE: DUAL LEFT TURNS NOT SHOWN REFER TO
PLAN SHEET FOR DETECTOR LOOP REPLACEMENT

**LEFT TURN LANES WITHOUT MEDIANS
VOLUME DENSITY ("FAR OUT" DETECTION)
ON SAME APPROACH
(PROTECTED / PERMITTED LEFT TURN PHASING)**



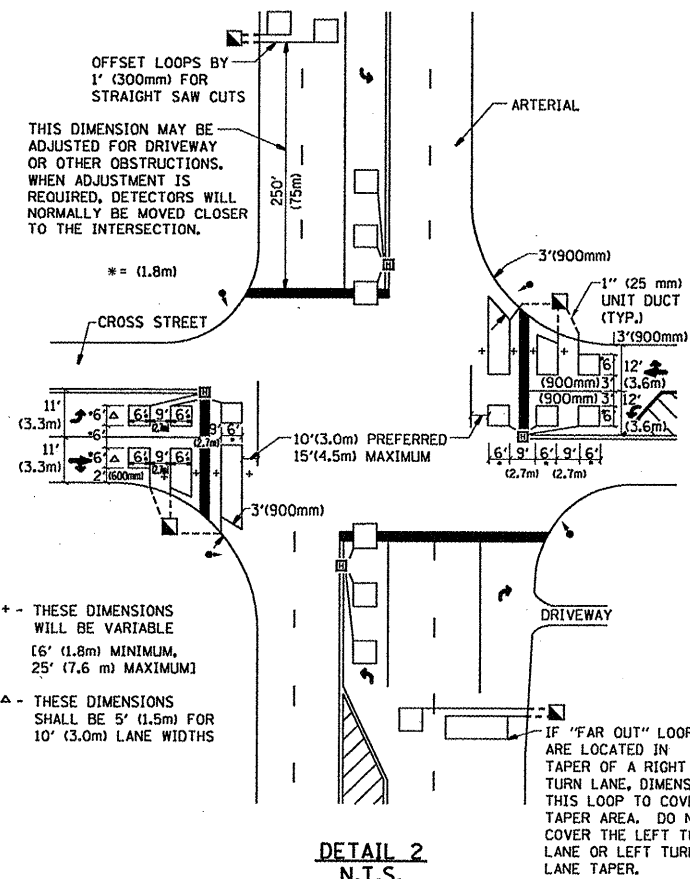
NOTE: DUAL LEFT TURNS NOT SHOWN REFER TO
PLAN SHEET FOR DETECTOR LOOP REPLACEMENT

**ARTERIAL-VOLUME DENSITY ("FAR OUT" DETECTION)
CROSS STREET-VOLUME DENSITY ("FAR OUT" DETECTION)**



**DETAIL 1
N.T.S.**

**ARTERIAL-VOLUME DENSITY ("FAR OUT" DETECTION)
CROSS STREET-NON VOLUME DENSITY ("UPTIGHT" PRESENCE DETECTION)**



**DETAIL 2
N.T.S.**

NOTES:

VEHICLES LOOP DETECTORS

- * ALL LEAD IN CABLE SHALL BE TWO CONDUCTOR NO. 14 TWISTED, SHIELDED.
- * EACH DETECTOR LOOP SHALL HAVE ITS OWN SAW CUT FROM THE LOOP TO THE EDGE OF PAVEMENT OR TO A HANDHOLE IN THE PAVEMENT.
- * EACH DETECTOR LOOP SHALL HAVE ITS OWN ONE INCH (25 mm) UNIT DUCT BETWEEN THE EDGE OF PAVEMENT AND THE FIRST HANDHOLE OR JUNCTION BOX. EACH UNIT DUCT RUN SHALL BE SHOWN ON THE PLANS BY THE DESIGNER, BUT SHALL NOT BE PAID FOR SEPARATELY. THIS ITEM IS INCIDENTAL TO THE PAY ITEM FOR DETECTOR LOOPS.
- * ONE DIMENSION OF ALL DETECTOR LOOPS SHALL BE SIX FEET (1.8 m)
- * EACH LANE OF NON-LOCKING, PRESENCE DETECTION AND EACH LANE OF A DOUBLE LEFT TURN LANE REQUIRES A SEPARATE INDUCTIVE LOOP DETECTOR AND LEAD IN CABLE.
- * WHEN NON-LOCKING, PRESENCE DETECTION IS USED, MORE THAN ONE LOOP PER LANE IS REQUIRED BEHIND THE STOP BAR (i.e. 1-1/2, 1-3/4, 2).
- * WHEN SYSTEM LOOPS ARE REQUIRED ON AN APPROACH OF AN INTERSECTION, THE LOOPS USED FOR VOLUME DENSITY AND INTERSECTION TIMING SHALL ALSO BE USED AS SYSTEM DETECTORS. EACH ONE OF THESE TYPE OF SHIELDS REQUIRES A SEPARATE TWO CONDUCTOR NO. 14 TWISTED SHIELDED CABLE AND A SEPARATE INDUCTIVE LOOP DETECTOR WHEN NEW CONTROLLERS ARE UTILIZED. THE DESIGNER SHALL LABEL THESE TYPES OF LOOPS AS "INTERSECTION AND SAMPLING (SYSTEM) DETECTORS" ON THE SIGNAL LAYOUT, THE INTERCONNECT PLAN AND THE SYSTEM CABLE PLAN. WHEN AN EXISTING CONTROLLER IS UTILIZED FOR THIS TYPE OF DETECTION, THE PAY ITEM "INDUCTIVE LOOP DETECTOR WITH SYSTEM OUTPUT" SHOULD BE USED.

PLACEMENT OF DETECTORS

THE FOLLOWING FIGURES REPRESENT THE MOST COMMON DETECTOR LOOP LOCATIONS AND SIZES. ADJUSTMENTS WILL BE NECESSARY FOR SPECIFIC GEOMETRIC CONSIDERATIONS.

LOCATIONS AND DEMENSIONS OF DETECTOR LOOPS ARE REQUIRED ON ALL SIGNAL LAYOUT PLAN SHEETS.

"FAR OUT" DETECTION REFERS TO LOCKING, PRESENCE TYPE DETECTION LOCATED IN THRU LANES, RIGHT TURN LANES, AND RIGHT TURN LANE TAPER AREAS (IF APPLICABLE), USUALLY 250' (75 m) IN ADVANCE OF STOP BARS. "UPTIGHT" DETECTION REFERS TO NON-LOCKING PRESENCE TYPE DETECTION LOCATED IN ALL LANES AND 10'-15' (3.0 m-4.5 m) BEHIND THE CROSSING STREET'S EDGE OF PAVEMENT EXTENDED.

NOTE:

ALL DETAILS AND NOTES SHOWN ARE FROM THE I.D.O.T. DISTRICT 1 TRAFFIC SIGNAL DESIGN GUIDELINES DATED JANUARY 1995

THIS DRAWING HAS BEEN PREPARED TO ASSIST THE RESIDENT ENGINEER FOR ALL ROADWAY RESURFACING OR S.M.A.R.T. PROJECTS WHERE THE DIMENSIONS ARE NOT SHOWN ON THE PLANS AND THE FINAL LOCATIONS FOR CROSSWALKS OR STOP BARS ARE NOT DETERMINED.

FILE NAME =	USER NAME = whitelar	DESIGNED -	REVISED -
cr:\p\work\p\WIDOT\WHITELAR\d8175544\1.dwg	Std.dgn	DRAWN -	REVISED -
	PLOT SCALE = 100.0000 "/td> <td>CHECKED - R.K.F.</td> <td>REVISED -</td>	CHECKED - R.K.F.	REVISED -
	PLOT DATE = 2/10/2010	DATE -	REVISED -

**STATE OF ILLINOIS
DEPARTMENT OF TRANSPORTATION**

**DISTRICT 1 - DETECTOR LOOP INSTALLATION
DETAILS FOR ROADWAY RESURFACING**

SCALE: NONE SHEET NO. 1 OF 1 SHEETS STA. TO STA.

F.A. RTE.	SECTION	COUNTY	TOTAL SHEETS	SHEET NO.
VAR	2010-014 RS	COOK	34	34
TS-07			CONTRACT NO. 60K33	
FED. ROAD DIST. NO. 1 ILLINOIS FED. AID PROJECT				