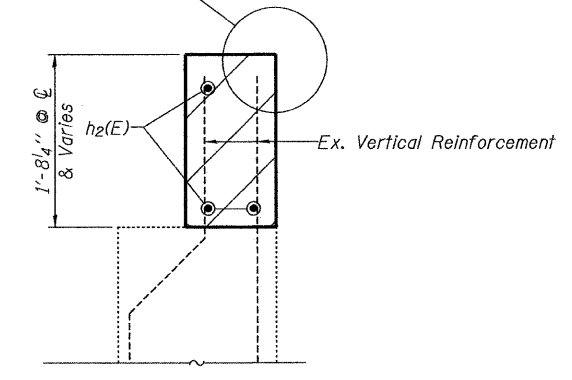
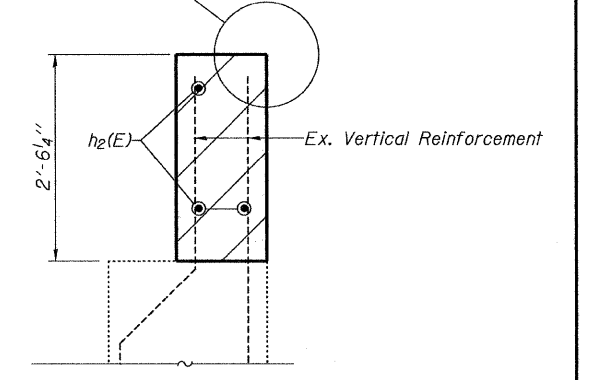


See Sheet 6 of 19 for Exp JT Details

See Sheet 6 of 19 for Exp JT Details



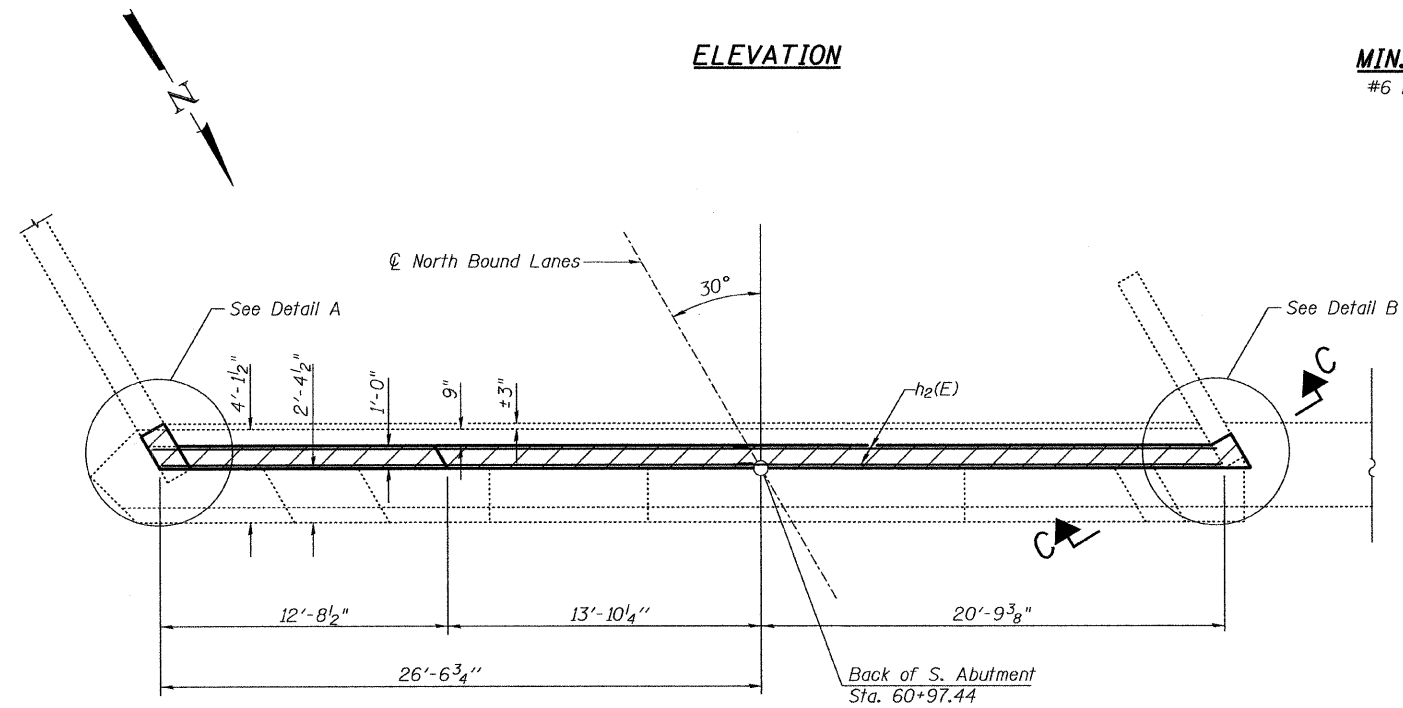
SECTION A-A



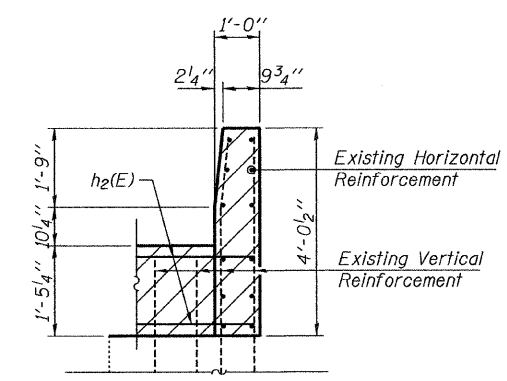
SECTION B-B

ELEVATION

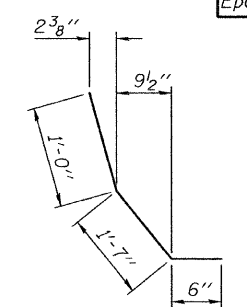
MIN. BAR LAP
#6 bar = 2'-7"



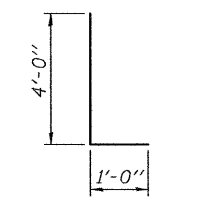
PLAN



SECTION C-C



BAR d3(E)



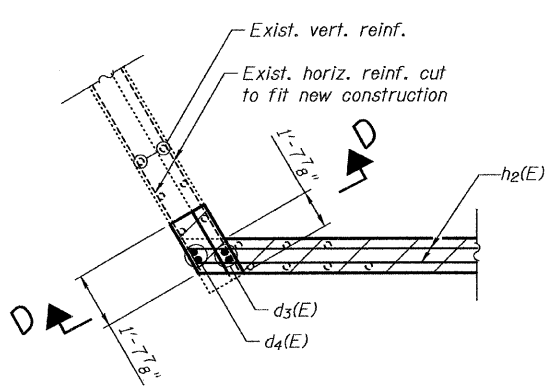
BAR d4(E)

BILL OF MATERIAL

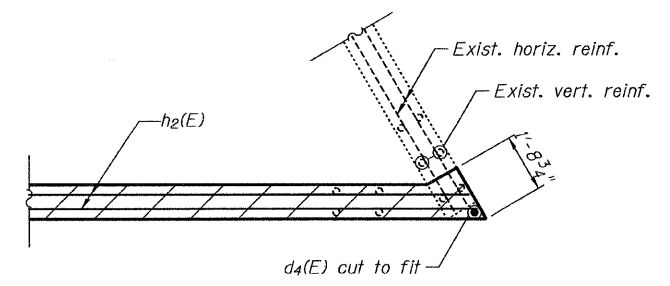
Bar	No.	Size	Length	Shape
h2(E)	6	#6	25'-5"	
d3(E)	2	#5	3'-1"	
d4(E)	3	#4	5'-0"	
Reinforcement Bars, Epoxy Coated			Pound	240

NOTES:

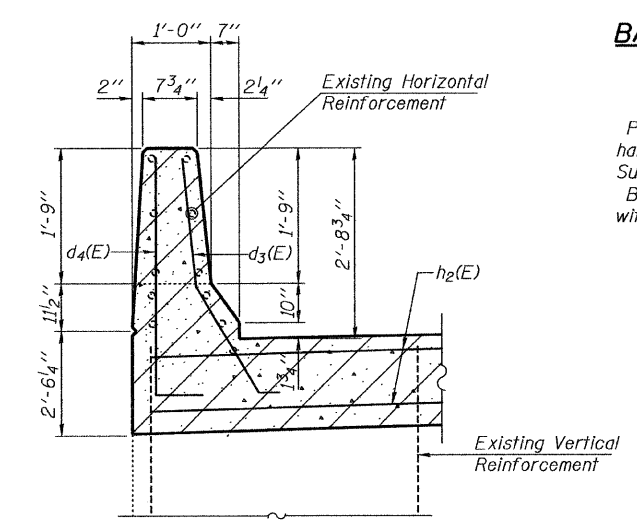
Pour hatched area after proposed deck is in place. Match top of hatched area to top of deck. Quantity included with Concrete Superstructure Sheet 4 of 19.
Bars indicated thus 3x2-#6 h2(E) indicates 3 lines of bars with 2 lengths per line.



DETAIL A



DETAIL B



SECTION D-D

ILLINOIS DEPARTMENT OF TRANSPORTATION	
SHEET TITLE	
SOUTH ABUTMENT DETAILS	
PROJECT	PROJECT NO.
I-55 NB OVER KANKAKEE RIVER	03095-16
FAI ROUTE 55, SECTION BB(B&B-1)BR	DATE
WILL COUNTY	9/23/09
SN 099-0001	DRAWN BY
	TFC
	CHECKED BY
	MCB
DRAWING NO.	
COOMBE-BLOXDORF P.C.	13
Engineers / Land Surveyors	
Springfield, Illinois	
Design Firm License No. 184-002703	OF 19 SHTS

PLOT DATE = 11/23/2009
 FILE NAME = ...88-099-000-ent-13-south-abut-deta.dgn
 PLOT SCALE = 400000 1" / 100'
 USER NAME = DFC