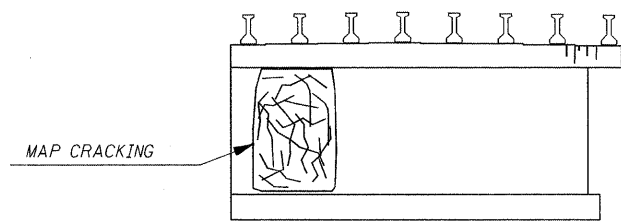
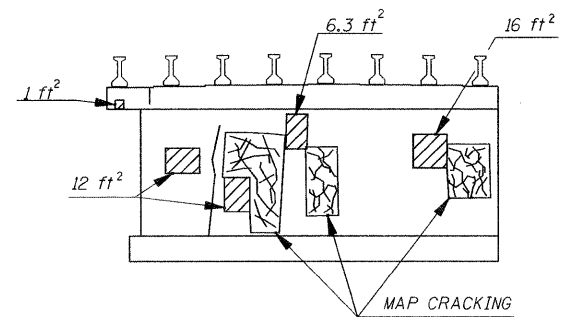


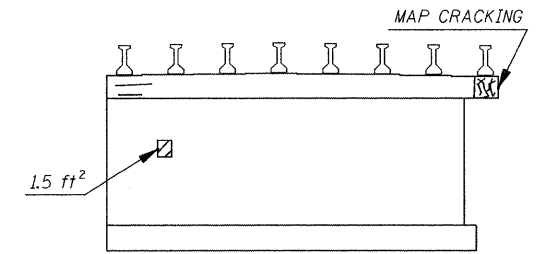
PIER 7
ELEVATION, SOUTH FACE
(LOOKING NORTH)



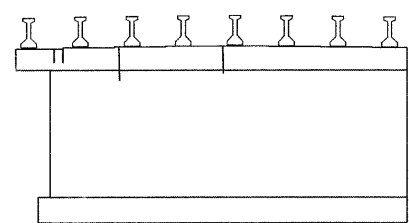
PIER 7
ELEVATION, NORTH FACE
(LOOKING SOUTH)



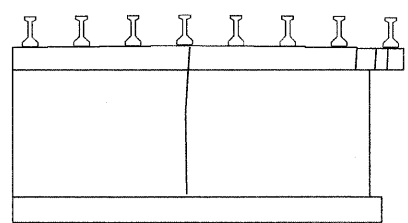
PIER 8
ELEVATION, SOUTH FACE
(LOOKING NORTH)



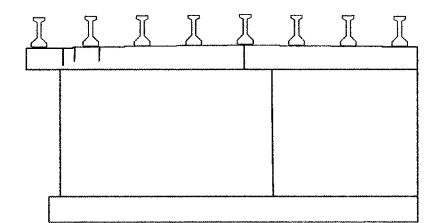
PIER 8
ELEVATION, NORTH FACE
(LOOKING SOUTH)



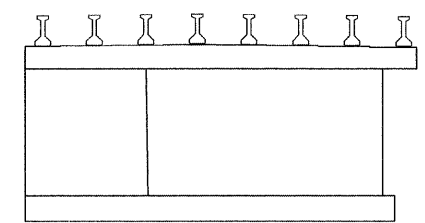
PIER 9
ELEVATION, SOUTH FACE
(LOOKING NORTH)



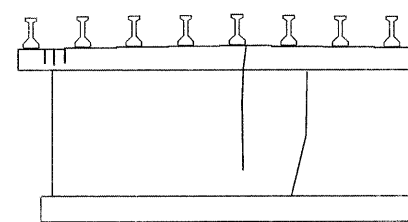
PIER 9
ELEVATION, NORTH FACE
(LOOKING SOUTH)



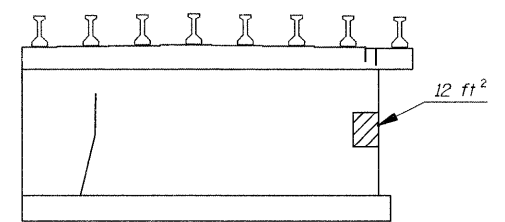
PIER 10
ELEVATION, SOUTH FACE
(LOOKING NORTH)



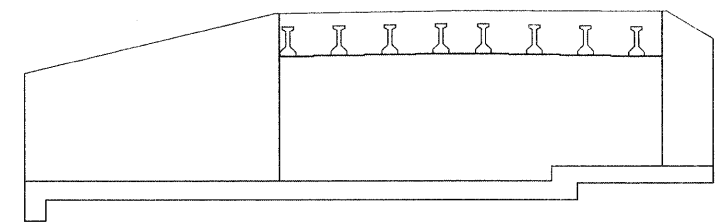
PIER 10
ELEVATION, NORTH FACE
(LOOKING SOUTH)



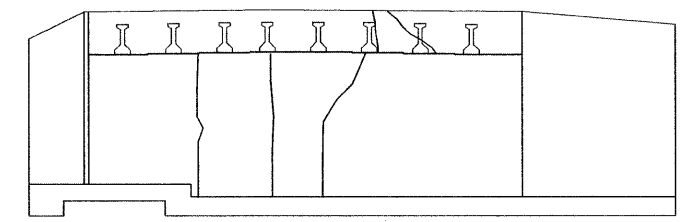
PIER 11
ELEVATION, SOUTH FACE
(LOOKING NORTH)



PIER 11
ELEVATION, NORTH FACE
(LOOKING SOUTH)



NORTH ABUTMENT
(LOOKING NORTH)



SOUTH ABUTMENT
(LOOKING SOUTH)

LEGEND

- Epoxy Crack Injection
- Structural Repair of Concrete (Depth Equal to or Less Than 5")

BILL OF MATERIAL

Item	Unit	Total
Epoxy Crack Injection	Foot	275
Structural Repair of Concrete (Depth Equal to or Less Than 5")	Sq Ft	90

ILLINOIS DEPARTMENT OF TRANSPORTATION	
SHEET TITLE	
ABUTMENT AND PIER REPAIRS	
PROJECT	PROJECT NO.
I-55 SB OVER KANKAKEE RIVER	03095-16
FAI ROUTE 55, SECTION 88(B&B-1)BR	SCALE
WILL COUNTY	06/25/09
SN 099-0002	DATE
	DRAWN BY
	CFC
	CHECKED BY
	MCB/KPS
	DRAWING NO.
COOMBE-BLOXDORF P.C.	
Engineers / Land Surveyors	
Springfield, Illinois	
Design Firm License No. 184-002703	
	9
	OF 9 SHTS

PLOT DATE : 6/25/09
 PLOT SCALE : 1/8" = 1'-0"
 USER NAME : JML