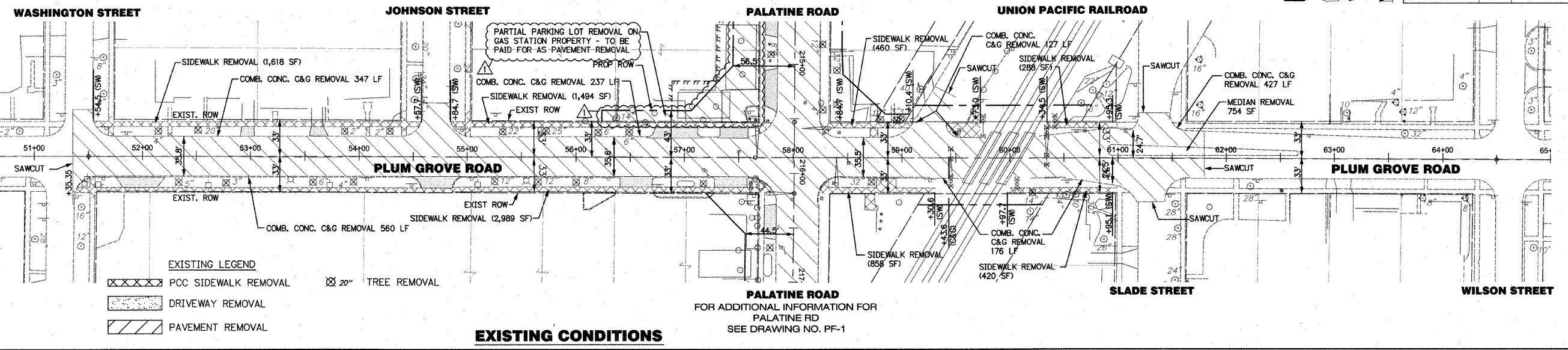


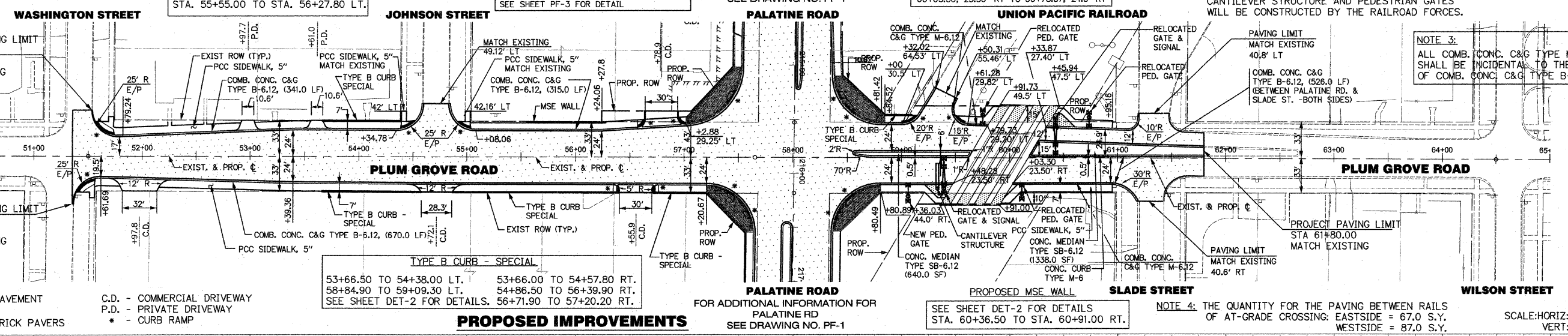
Revised 4/3-10

FOR ADDITIONAL INFORMATION FOR PALATINE RD SEE DRAWING NO. PF-1



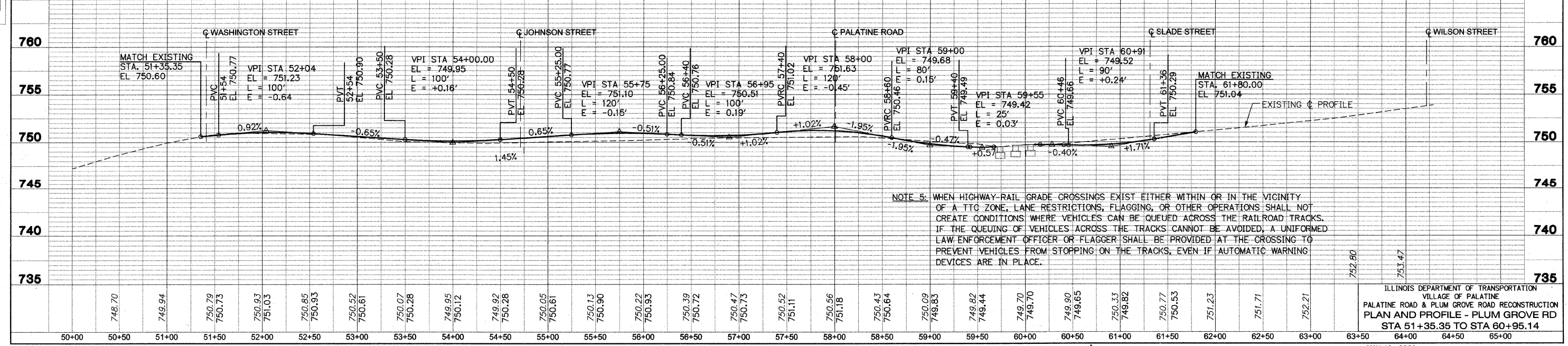
**EXISTING CONDITIONS**

NOTE 1: ALL THE EXISTING DRIVEWAYS WITHIN THE EXISTING R.O.W. ARE P.C.C. PAVEMENT.  
 PROPOSED MSE WALL SEE SHEET DET-2 FOR DETAILS STA. 55+55.00 TO STA. 56+27.80 LT.  
 CONC. CURB TYPE M-6 60+27.34, 15.91' LT TO 60+94.48, 2.50' LT SEE SHEET PF-3 FOR DETAIL  
 FOR ADDITIONAL INFORMATION FOR PALATINE RD SEE DRAWING NO. PF-1  
 COMB. CONC. C&G TYPE M-6.12 59+50.31, 55.46' LT TO 59+79.73, 29.20' LT 60+03.30, 23.50' RT TO 60+78.37, 24.5' RT  
 NOTE 2: ALL THE RAILROAD CROSSING NEW GATES, SIGNAL, CANTILEVER STRUCTURE AND PEDESTRIAN GATES WILL BE CONSTRUCTED BY THE RAILROAD FORCES.



**PROPOSED IMPROVEMENTS**

NOTE 3: ALL COMB. CONC. C&G TYPE M-6.12 SHALL BE INCIDENTAL TO THE COST OF COMB. CONC. C&G TYPE B-6.12.  
 NOTE 4: THE QUANTITY FOR THE PAVING BETWEEN RAILS OF AT-GRADE CROSSING: EASTSIDE = 67.0 S.Y. WESTSIDE = 87.0 S.Y.  
 SCALE: HORIZ: 1"=50' VERT: 1"=5'



NOTE 5: WHEN HIGHWAY-RAIL GRADE CROSSINGS EXIST EITHER WITHIN OR IN THE VICINITY OF A TTC ZONE, LANE RESTRICTIONS, FLAGGING, OR OTHER OPERATIONS SHALL NOT CREATE CONDITIONS WHERE VEHICLES CAN BE QUEUED ACROSS THE RAILROAD TRACKS. IF THE QUEUING OF VEHICLES ACROSS THE TRACKS CANNOT BE AVOIDED, A UNIFORMED LAW ENFORCEMENT OFFICER OR FLAGGER SHALL BE PROVIDED AT THE CROSSING TO PREVENT VEHICLES FROM STOPPING ON THE TRACKS, EVEN IF AUTOMATIC WARNING DEVICES ARE IN PLACE.

ILLINOIS DEPARTMENT OF TRANSPORTATION  
 VILLAGE OF PALATINE  
 PALATINE ROAD & PLUM GROVE ROAD RECONSTRUCTION  
 PLAN AND PROFILE - PLUM GROVE RD  
 STA 51+35.35 TO STA 60+95.14