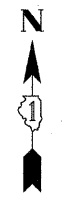
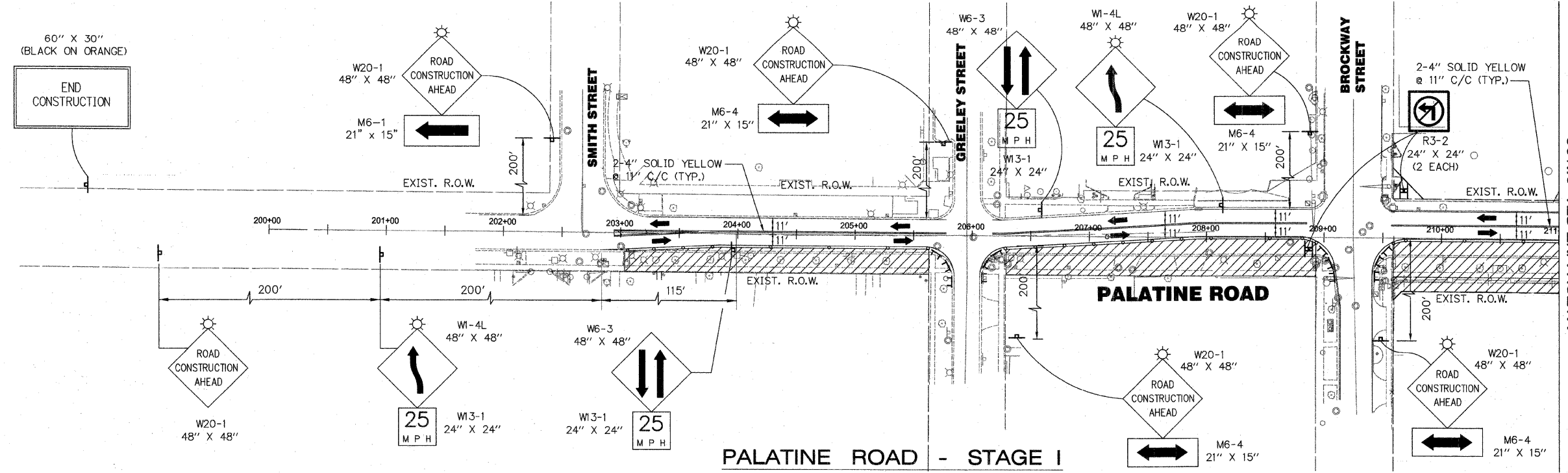


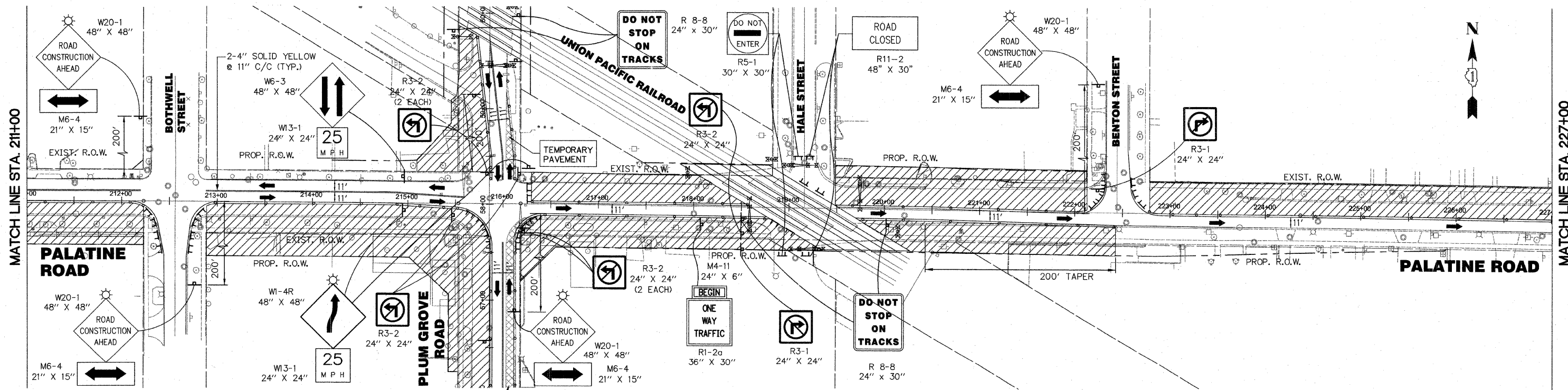
- THE COST OF TEMPORARY PAVEMENT MARKING FOR STAGE I CONSTRUCTION IS INCLUDED IN THE COST OF "TRAFFIC CONTROL & PROTECTION (SPECIAL)".
- PLACE ONE-WAY SIGN (R6-2) EASTBOUND AT ALL DRIVEWAYS AND CROSS ROADS EAST OF PLUM GROVE ROAD TO KERWOOD AVENUE.



60" X 30"
(BLACK ON ORANGE)
END CONSTRUCTION



**PALATINE ROAD - STAGE I
BEGINNING TO STA. 211+00**



- PRESTAGE**
- RELOCATE ALL UTILITY POLES TO THE BACK OF R.O.W.
 - RELOCATE/REMOVE LIGHT POLES, RETAINING WALLS AND SIGNS.
 - REMOVE EXISTING CURB AND CURB AND GUTTER.
 - CONSTRUCT 10' WIDE TEMPORARY PAVEMENT FROM STA. 51+40 TO STA. 57+80

**PALATINE ROAD - STAGE I
STA. 211+00 TO STA. 227+00**

- LEGEND**
- TEMPORARY TRAFFIC ADVISORY SIGN
 - WORK AREA
 - TYPE II BARRICADE WITH MONO-DIRECTIONAL STEADY BURN LIGHTS AT 50' CENTERS, 25' IN TAPERS AND 10' IN RADII (TYP.) SEE NOTE 1.
 - TYPE III BARRICADE WITH LIGHT
 - TRAFFIC LANE
 - TEMPORARY PAVEMENT

REVISIONS	
NAME	DATE

ILLINOIS DEPARTMENT OF TRANSPORTATION
VILLAGE OF PALATINE
PALATINE ROAD & PLUM GROVE ROAD RECONSTRUCTION
SMITH STREET TO US 14 (NORTHWEST HIGHWAY)
**PALATINE ROAD
MAINTENANCE OF TRAFFIC
STAGE I**
SCALE: VERT. N.T.S. DRAWN BY JW
 HORIZ. 1" = 50' CHECKED BY BA
DATE: OCTOBER 19, 2009