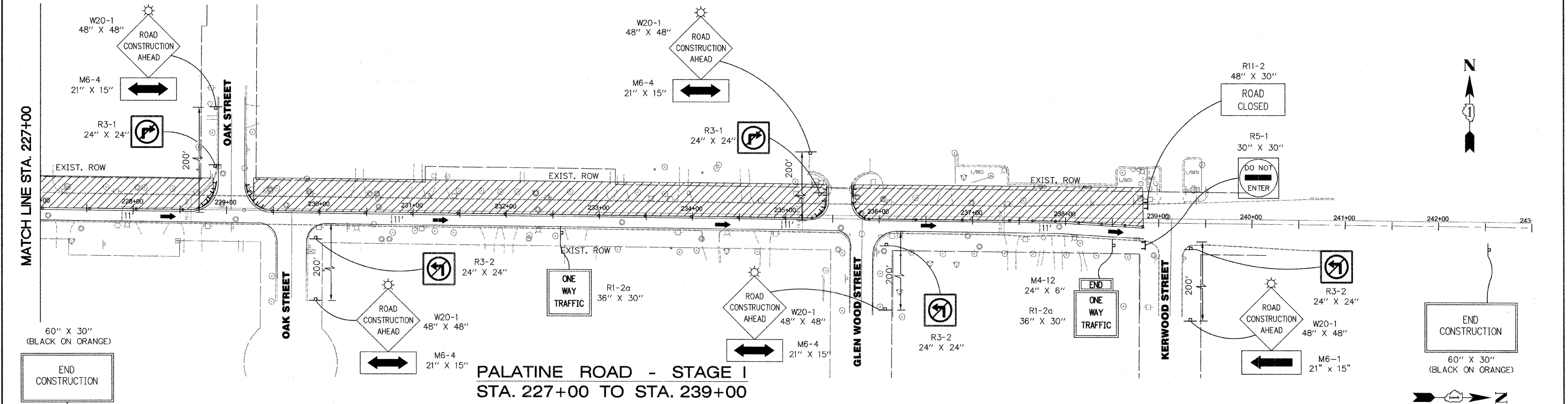
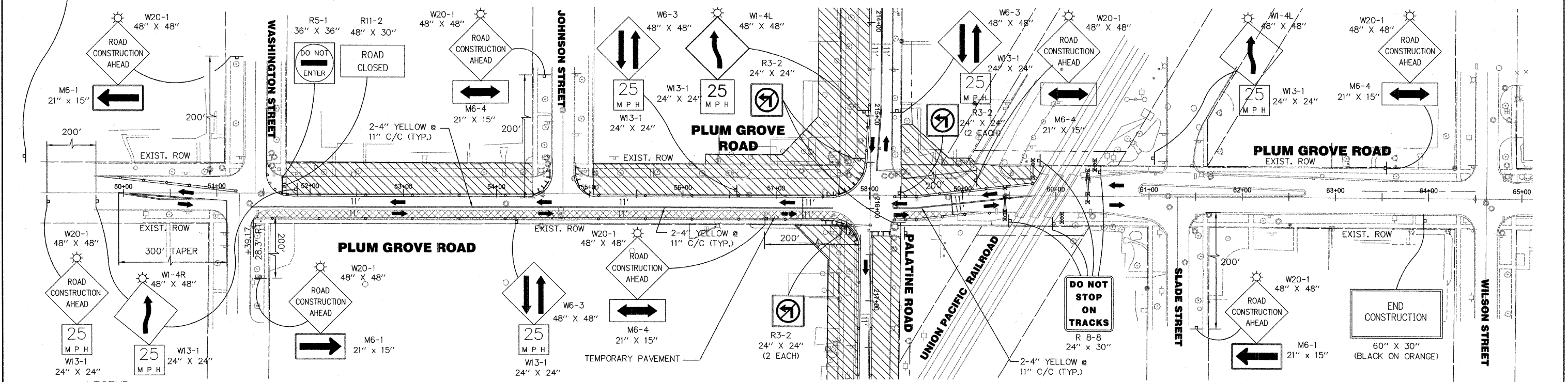


1. THE COST OF TEMPORARY PAVEMENT MARKING FOR STAGE I CONSTRUCTION IS INCLUDED IN THE COST OF "TRAFFIC CONTROL & PROTECTION (SPECIAL)".
2. PLACE ONE-WAY SIGN (R6-2) EASTBOUND AT ALL DRIVEWAYS AND CROSS ROADS EAST OF PLUM GROVE ROAD TO KERWOOD AVENUE.

F.A.P. RTE.	SECTION	COUNTY	TOTAL SHEETS	SHEET NO.
1285	02-00075-00-PV	COOK	161	33
STA.	TO STA.			
FED. ROAD DIST. NO.	ILLINOIS	FED. AID PROJECT		
CONTRACT NO. 63083				



PALATINE ROAD - STAGE I
STA. 227+00 TO STA. 239+00



PLUM GROVE ROAD - STAGE I
STA. 51+50 TO STA. 61+25

- LEGEND**
- TEMPORARY TRAFFIC ADVISORY SIGN
 - WORK AREA
 - TYPE II BARRICADE WITH MONO-DIRECTIONAL STEADY BURN LIGHTS AT 50' CENTERS, 25' IN TAPERS AND 10' IN RADII (TYP.)
 - TYPE III BARRICADE WITH LIGHT
 - TRAFFIC LANE
 - TEMPORARY PAVEMENT

REVISIONS	
NAME	DATE

ILLINOIS DEPARTMENT OF TRANSPORTATION
VILLAGE OF PALATINE
PALATINE ROAD & PLUM GROVE ROAD RECONSTRUCTION
SMITH STREET TO US 14 (NORTHWEST HIGHWAY)
PALATINE ROAD & PLUM GROVE ROAD
MAINTENANCE OF TRAFFIC
STAGE I

SCALE: VERT. N.T.S.
HORIZ. 1" = 50'
DATE: OCTOBER 19, 2009

DRAWN BY: ---
CHECKED BY: BA